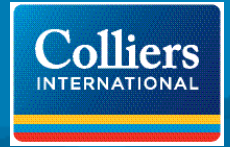


FOR LEASE > OFFICE SPACE > CBD



Meridian

1320 MAIN ST. COLUMBIA SC 29201



Meridian > Office Space

- > ± 335,000 RSF Building
- > 17 stories
- > Class A Columbia office building
- > Efficient 22,000+ RSF floor plates

Building Amenities

- > High profile, Main Street address
- > Parking in attached 8 level parking garage
- > State-of-the-art internet-based property management and building systems
- > 50' high grand entry and lobby
- > Full service fitness center onsite for exclusive use by building tenants
- > Bank and restaurant onsite
- > Premier appointments:
 - > Makore wood paneling
 - > Mosaic stone floors
 - > Lighted roof trellis
- > Available space as follows:

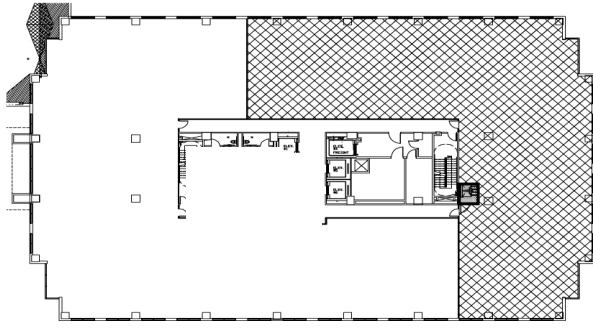
> 3rd Floor	9,435 RSF
> 4th Floor	8,847 RSF
> 5th Floor	4,961 RSF
> 7th Floor	5,143 RSF

Colliers International South Carolina, Inc., and certain of its subsidiaries, is an independently owned and operated business and a member firm of Colliers International Property Consultants, an affiliation of independent companies with over 512 offices throughout more than 61 countries worldwide. Information contained herein has been obtained from the owner of the property or other sources that we deem reliable. We have no reason to doubt its accuracy, but we do not guarantee it.

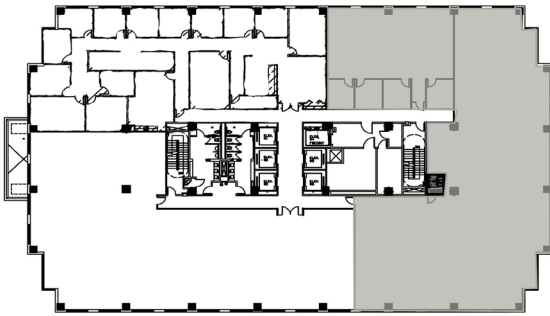
TOMMY JOHNSON
803 401 4228
tommy.johnson@colliers.com

COLLIERS INTERNATIONAL
1301 Gervais Street Suite 600
P.O. Box 11610 (29211-1610)
Columbia, SC 29201-3326
www.colliers.com

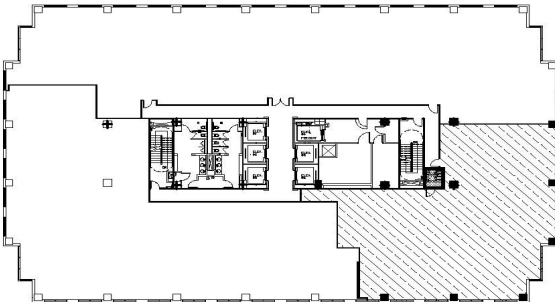
Meridian > Floor Plans



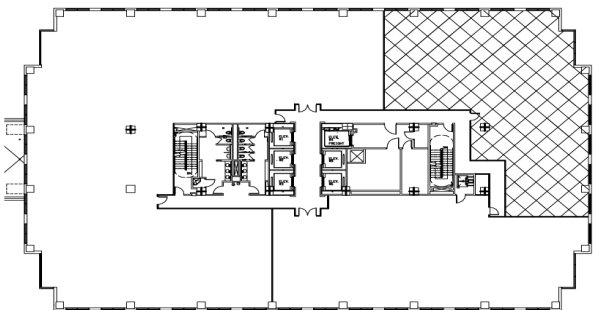
3RD FLOOR
9,435 RSF



4TH FLOOR
8,847 RSF



5TH FLOOR
4,961 RSF



7TH FLOOR
5,143 RSF



Contact Information

TOMMY JOHNSON
803 401 4228 DIRECT
tommy.johnson@colliers.com

COLLIERS INTERNATIONAL
1301 Gervais Street Suite 600
P.O. Box 11610 (29211-1610)
Columbia, SC 29201-3326
www.colliers.com