

13825-13837 W 135TH ST

OLATHE, KS 66062



HIGHLIGHTS

- » Target Retail & Office Uses: Urgent Care, Fitness, Medical, Restaurant & Insurance
- » Owner will Build-to-Suit Lease
- » Parking Ratio 6:1
- » 1,000 SF- 4,834 SF Available
- » Great Location on 135th St, Next to Menards
- » Available Early 2020

FOR LEASE

\$29.00/SF NNN

DEMOGRAPHICS

	1 Mile	3 Mile	5 Mile
2018 POPULATION	10,848	98,861	223,269
2018 MED HOUSEHOLD INCOME	\$116,481	\$88,404	\$86,089

Jim Thome

Office: 913.548.8700

Fax: 913.981.9082

Email: jimthome@reececommercial.com

The information above has been obtained from sources believed reliable. While we do not doubt its accuracy we have not verified it and make no guarantee, warranty or representation about it. It is your responsibility to independently confirm its accuracy and completeness. Any projections, opinions, assumptions, or estimates used are for example only and do not represent the current or future performance of the property. You and your advisors should conduct a careful, independent investigation of the property to determine to your satisfaction the suitability of the property for your needs. © 2019

SITE PLAN

13825, 13829, 13833, 13837 W 135TH ST, OLATHE, KS 66062

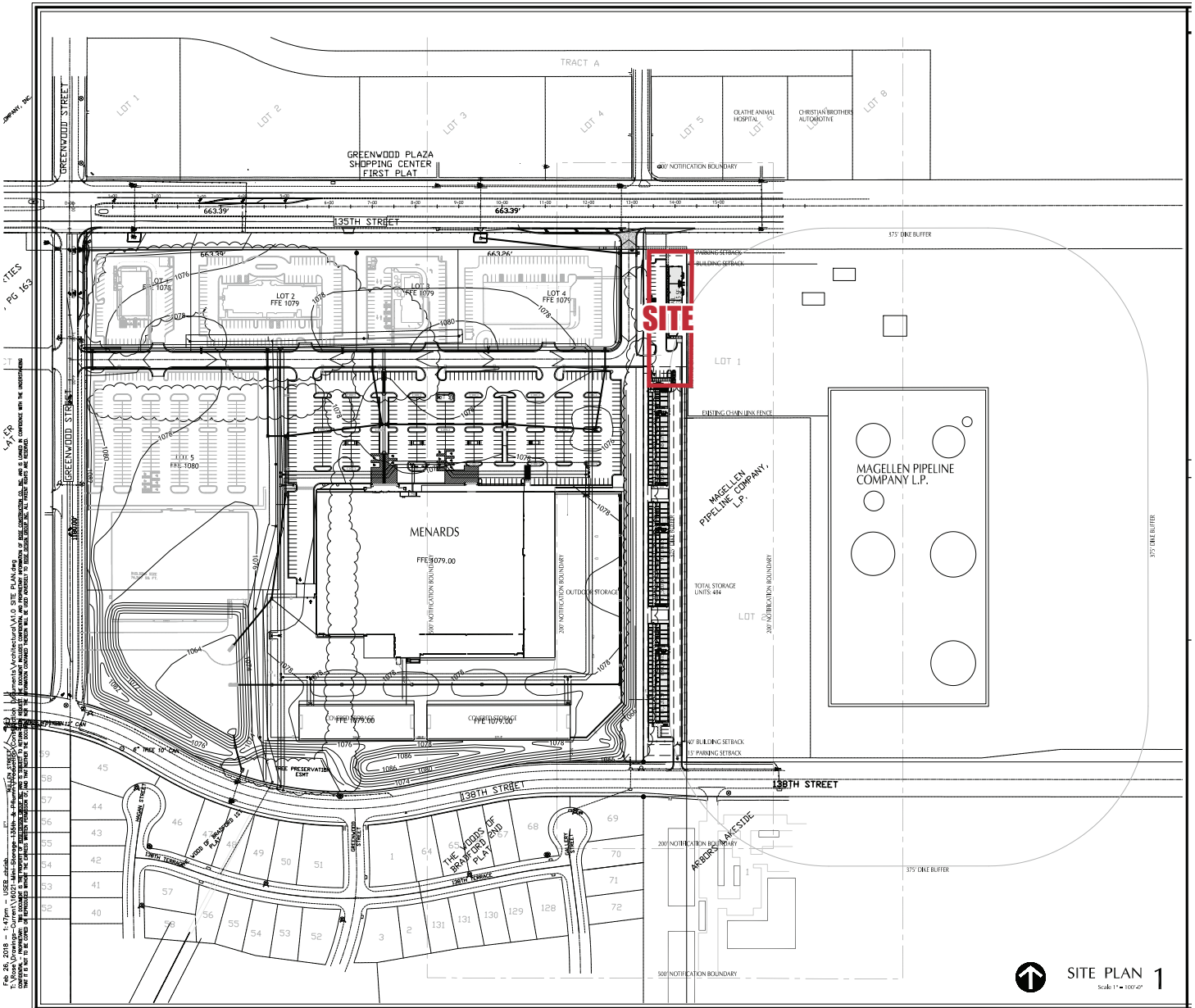


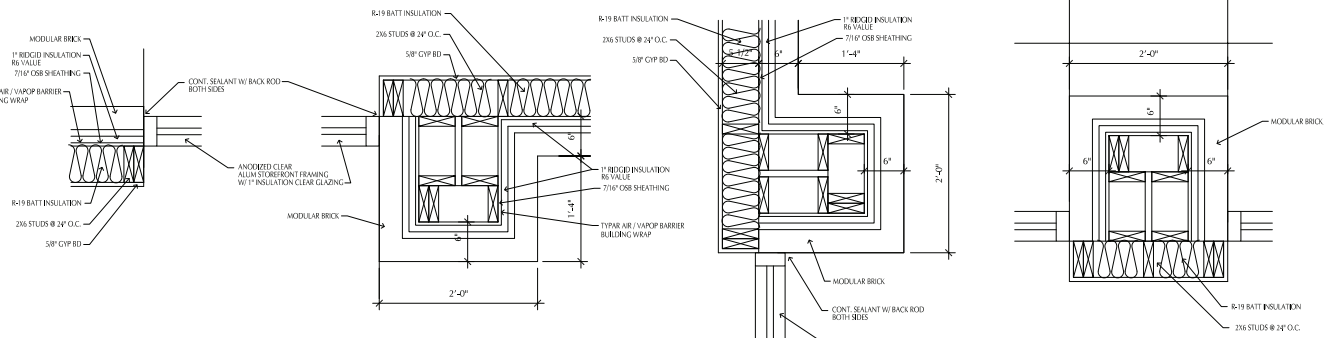
FIG. NO. 0018 - 135TH ST. 10/28/16 - 10/28/16 - 10/28/16
T. J. Moore, Designer - Current V.002, 13825, 13829, 13833, 13837 W 135TH ST, OLATHE, KS 66062
DATE: 10/28/16
SCALE: 1" = 100'
PROJECT: 13825, 13829, 13833, 13837 W 135TH ST, OLATHE, KS 66062
SHEET NO. 0018 OF 0018
DRAWN BY: T. J. MOORE
CHECKED BY: T. J. MOORE
APPROVED BY: T. J. MOORE
DATE: 10/28/16
SCALE: 1" = 100'

Jim Thome
Office: 913.548.8700
Fax: 913.981.9082
Email: jimthome@reececommercial.com

The information above has been obtained from sources believed reliable. While we do not doubt its accuracy we have not verified it and make no guarantee, warranty or representation about it. It is your responsibility to independently confirm its accuracy and completeness. Any projections, opinions, assumptions, or estimates used are for example only and do not represent the current or future performance of the property. You and your advisors should conduct a careful, independent investigation of the property to determine to your satisfaction the suitability of the property for your needs. © 2019

FLOOR PLANS

13825, 13829, 13833, 13837 W 135TH ST, OLATHE, KS 66062

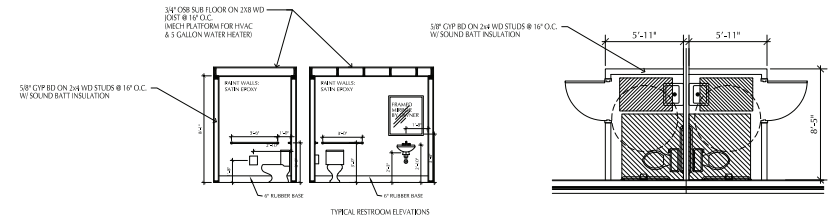


FLOOR PLAN DETAIL 6
Scale: 1/12" = 1'-0"

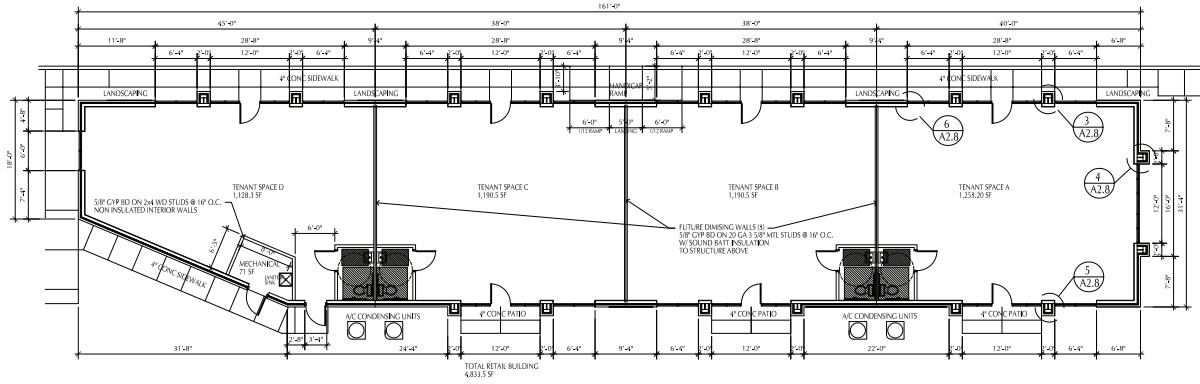
FLOOR PLAN DETAIL 5
Scale: 1/12" = 1'-0"

FLOOR PLAN DETAIL 4
Scale: 1/12" = 1'-0"

FLOOR PLAN DETAIL 3
Scale: 1/12" = 1'-0"



ENLARGED FLOOR PLAN 2
Scale: 1/8" = 1'-0"



FLOOR PLAN 1
Scale: 1/8" = 1'-0"

Apr 20, 2018 - 8:32am - USER: chke
 T:\Users\jthome\OneDrive\Projects\13837 W 135th St\13837 W 135th St - Retail - Floor Plan.dwg
 User: jthome, Date: 4/20/2018, Time: 8:32:00 AM, Plot: 13837 W 135th St - Retail - Floor Plan.dwg, Plot Date: 4/20/2018, Time: 8:32:00 AM, Plot Scale: 1/8" = 1'-0", Plot Orientation: Landscape, Plot Color: Black, Plot Lineweight: 0.20, Plot Linetype: Solid, Plot Plotname: 13837 W 135th St - Retail - Floor Plan.dwg, Plot Plotpath: T:\Users\jthome\OneDrive\Projects\13837 W 135th St\13837 W 135th St - Retail - Floor Plan.dwg, Plot Plottype: Plot, Plot User: jthome, Plot Version: 13.0

Jim Thome

Office: 913.548.8700

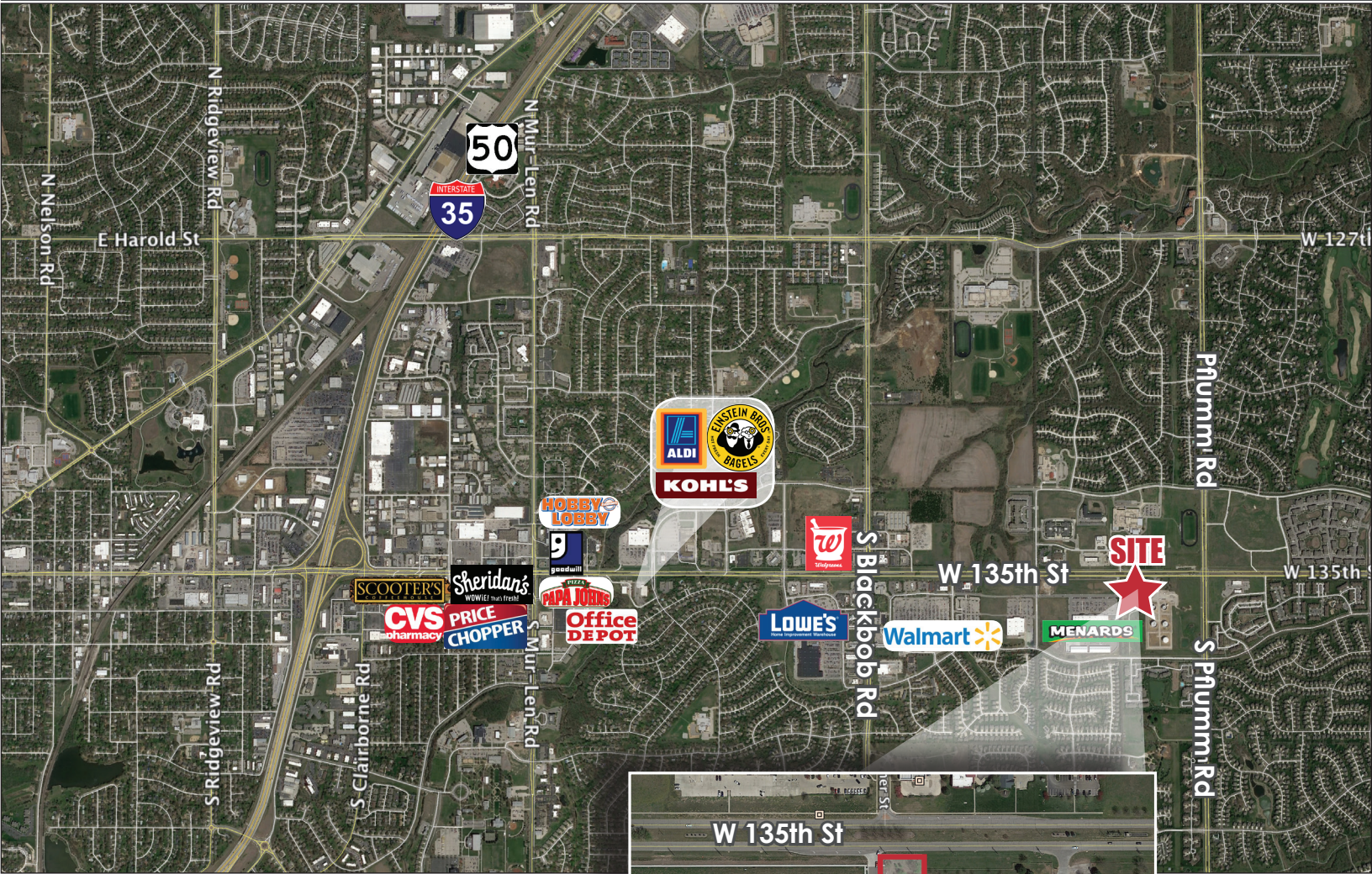
Fax: 913.981.9082

Email: jimthome@reececommercial.com

The information above has been obtained from sources believed reliable. While we do not doubt its accuracy we have not verified it and make no guarantee, warranty or representation about it. It is your responsibility to independently confirm its accuracy and completeness. Any projections, opinions, assumptions, or estimates used are for example only and do not represent the current or future performance of the property. You and your advisors should conduct a careful, independent investigation of the property to determine to your satisfaction the suitability of the property for your needs. © 2019

AERIALS

13825, 13829, 13833, 13837 W 135TH ST, OLATHE, KS 66062



Jim Thome

Office: 913.548.8700

Fax: 913.981.9082

Email: jimthome@reececommercial.com

The information above has been obtained from sources believed reliable. While we do not doubt its accuracy we have not verified it and make no guarantee, warranty or representation about it. It is your responsibility to independently confirm its accuracy and completeness. Any projections, opinions, assumptions, or estimates used are for example only and do not represent the current or future performance of the property. You and your advisors should conduct a careful, independent investigation of the property to determine to your satisfaction the suitability of the property for your needs. © 2019