



OFFICE BUILDING

FOR LEASE

# 2 EDISON PLACE

2 Edison Place, Springfield, NJ 07081

*For More Information, Contact*

**PETER J. MURANO, JR., SIOR**

*Senior Executive Director*  
pjmurano@blauberg.com  
973.379.6644 x114

**JASON M. CRIMMINS, CCIM, SIOR**

*President*  
jmcrimmins@blauberg.com  
973.379.6644 x122

**ALESSANDRO (ALEX) CONTE, CCIM, SIOR**

*Executive Vice President*  
aconte@blauberg.com  
973.379.6644 x131



830 Morris Turnpike, Suite 201, Short Hills, NJ 07078

[www.blauberg.com](http://www.blauberg.com)

# 2 EDISON PLACE

2 Edison Place, Springfield, NJ 07081



## PROPERTY DESCRIPTION

±2,000 - 12,000 SF Office Space Available

## OFFERING SUMMARY

Lease Rate:	\$18 PSF Gross Plus TE
Available SF:	±2,000 - 12,000 SF
Lot Size:	1.4 Acres
Building Size:	19,500 SF

## PROPERTY HIGHLIGHTS

- Building Size: ±19,500 SF
- Available Spaces: ±2,000 - 12,000 SF (Ground Floor; Divisible)
- Stories: 2
- Parking: 87 Spaces
- Amenities: Recently Renovated Bathrooms
- Comments: Close Proximity to Walgreens, CVS Pharmacy, NY Sports Club and Various Restaurants
- Access: Great Access to I-78 and Morris Ave.

### For More Information, Contact

**PETER J. MURANO, JR., SIOR**

Senior Executive Director  
pjmurano@blauberg.com  
973.379.6644 x114

**JASON M. CRIMMINS, CCIM, SIOR**

President  
jmcrimmins@blauberg.com  
973.379.6644 x122

**ALESSANDRO (ALEX) CONTE, CCIM, SIOR**

Executive Vice President  
aconte@blauberg.com  
973.379.6644 x131

830 Morris Turnpike  
Suite 201  
Short Hills, NJ 07078

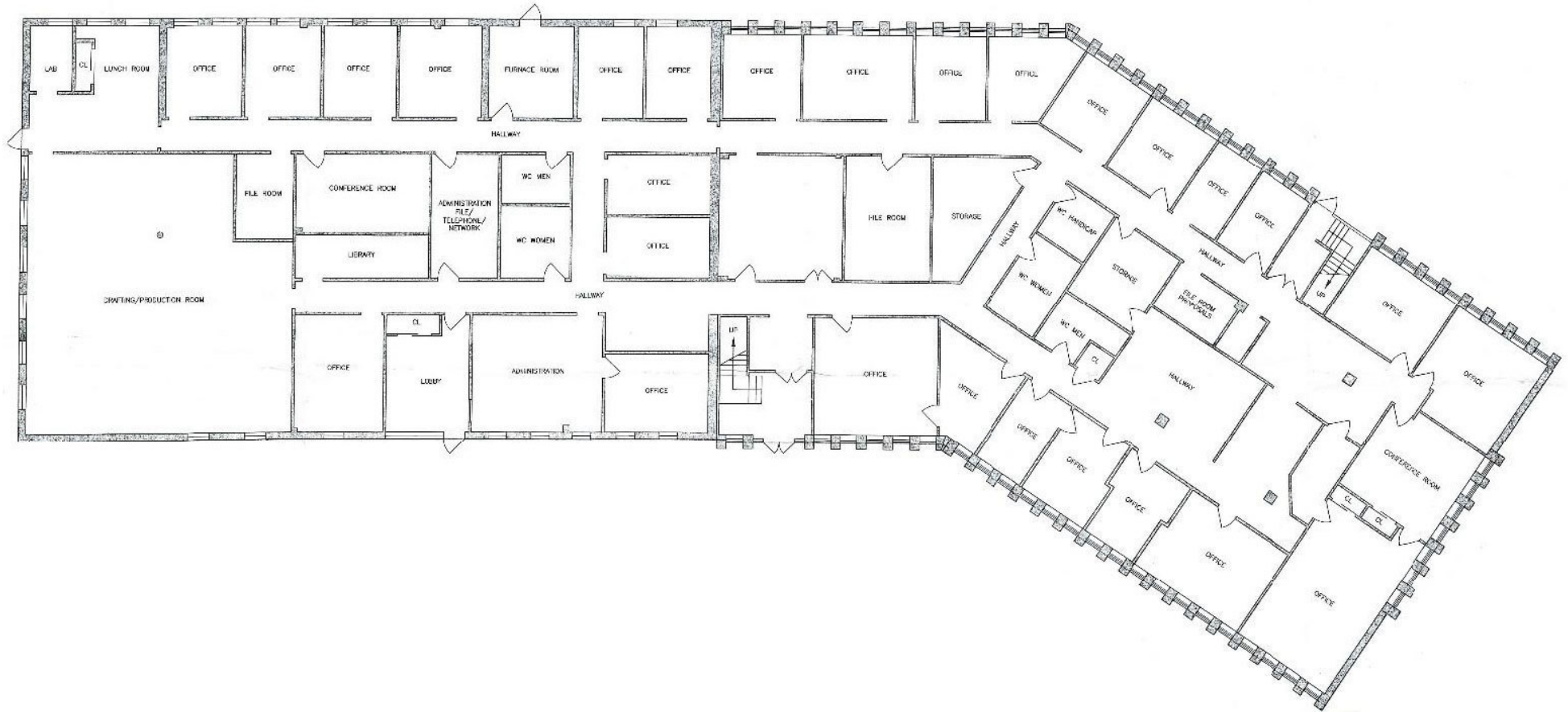
[www.blauberg.com](http://www.blauberg.com)



The information contained herein has been obtained from sources considered to be reliable, but no guarantee of its accuracy is made by this company. In addition, no representation is made respecting zoning, condition of title, dimensions, or any matters of a legal or environmental nature. Such matters should be referred to legal counsel for determination. Terms and conditions are subject to change without prior notice. Subject to errors and omissions.

# 2 EDISON PLACE

2 Edison Place, Springfield, NJ 07081



## For More Information, Contact

**PETER J. MURANO, JR., SIOR**

Senior Executive Director  
pjmurano@blauberg.com  
973.379.6644 x114

**JASON M. CRIMMINS, CCIM, SIOR**

President  
jmcrimmins@blauberg.com  
973.379.6644 x122

**ALESSANDRO (ALEX) CONTE, CCIM, SIOR**

Executive Vice President  
aconte@blauberg.com  
973.379.6644 x131

830 Morris Turnpike  
Suite 201  
Short Hills, NJ 07078

[www.blauberg.com](http://www.blauberg.com)



The information contained herein has been obtained from sources considered to be reliable, but no guarantee of its accuracy is made by this company. In addition, no representation is made respecting zoning, condition of title, dimensions, or any matters of a legal or environmental nature. Such matters should be referred to legal counsel for determination. Terms and conditions are subject to change without prior notice. Subject to errors and omissions.



# 2 EDISON PLACE

2 Edison Place, Springfield, NJ 07081



*For More Information, Contact*

**PETER J. MURANO, JR., SIOR**

Senior Executive Director  
pjmurano@blauberg.com  
973.379.6644 x114

**JASON M. CRIMMINS, CCIM, SIOR**

President  
jmcrimmins@blauberg.com  
973.379.6644 x122

**ALESSANDRO (ALEX) CONTE, CCIM, SIOR**

Executive Vice President  
aconte@blauberg.com  
973.379.6644 x131

830 Morris Turnpike  
Suite 201  
Short Hills, NJ 07078

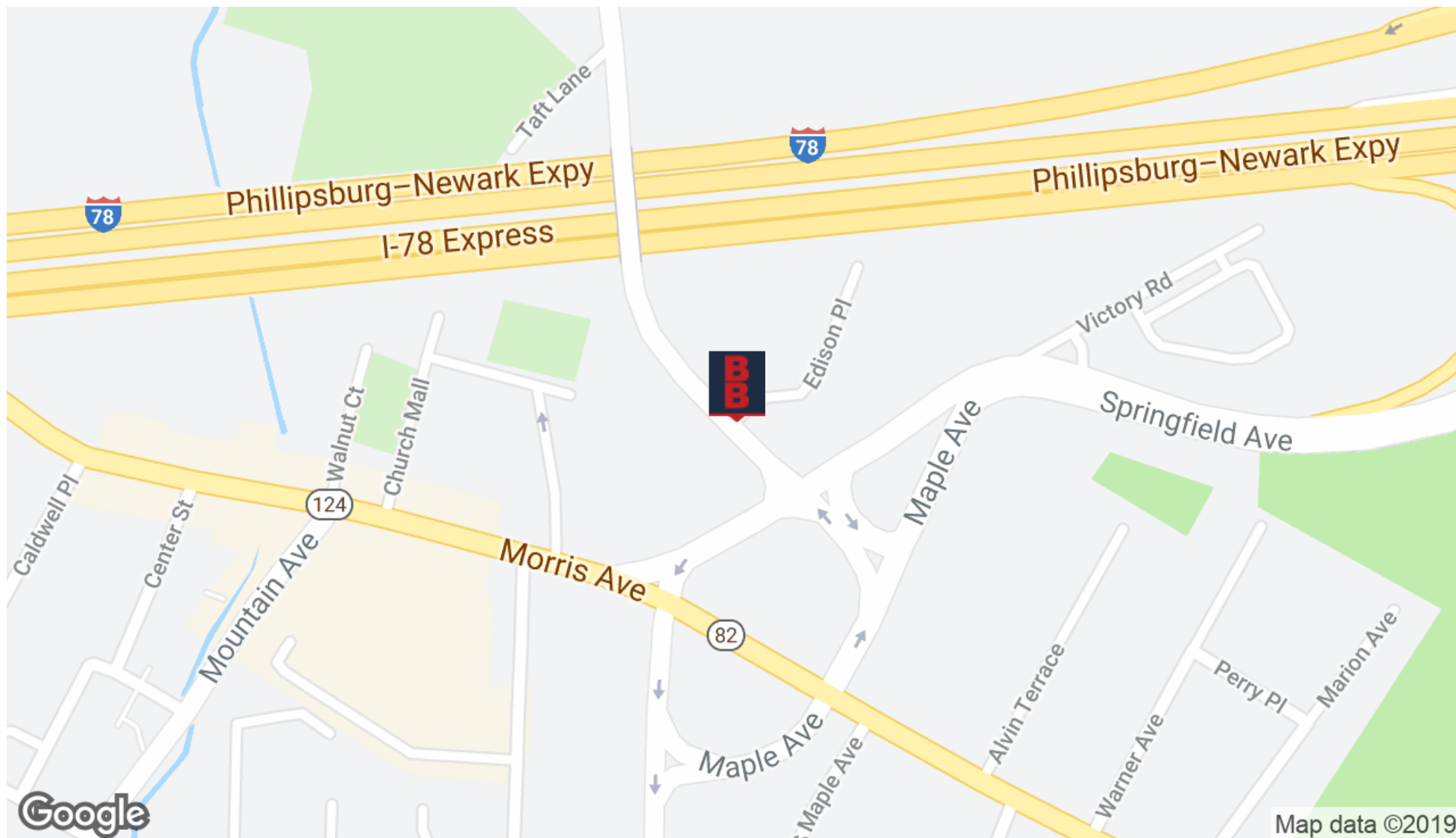
[www.blauberg.com](http://www.blauberg.com)



The information contained herein has been obtained from sources considered to be reliable, but no guarantee of its accuracy is made by this company. In addition, no representation is made respecting zoning, condition of title, dimensions, or any matters of a legal or environmental nature. Such matters should be referred to legal counsel for determination. Terms and conditions are subject to change without prior notice. Subject to errors and omissions.

# 2 EDISON PLACE

2 Edison Place, Springfield, NJ 07081



## For More Information, Contact

**PETER J. MURANO, JR., SIOR**

Senior Executive Director  
pjmurano@blauberg.com  
973.379.6644 x114

**JASON M. CRIMMINS, CCIM, SIOR**

President  
jmcrimmins@blauberg.com  
973.379.6644 x122

**ALESSANDRO (ALEX) CONTE, CCIM, SIOR**

Executive Vice President  
aconte@blauberg.com  
973.379.6644 x131

830 Morris Turnpike  
Suite 201  
Short Hills, NJ 07078

[www.blauberg.com](http://www.blauberg.com)

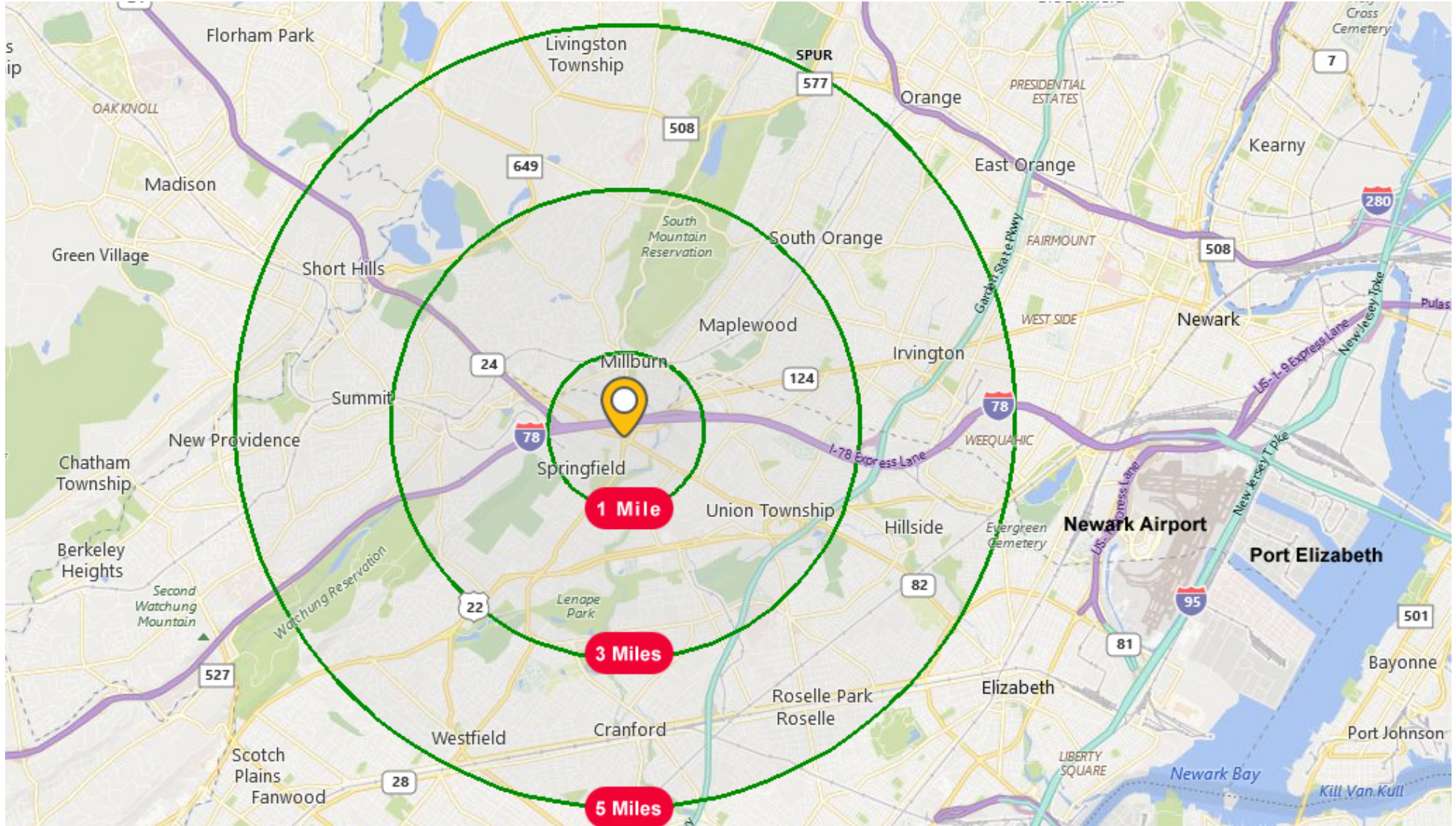


The information contained herein has been obtained from sources considered to be reliable, but no guarantee of its accuracy is made by this company. In addition, no representation is made respecting zoning, condition of title, dimensions, or any matters of a legal or environmental nature. Such matters should be referred to legal counsel for determination. Terms and conditions are subject to change without prior notice. Subject to errors and omissions.



# 2 EDISON PLACE

2 Edison Place, Springfield, NJ 07081



### For More Information, Contact

**PETER J. MURANO, JR., SIOR**

Senior Executive Director  
pjmurano@blauberg.com  
973.379.6644 x114

**JASON M. CRIMMINS, CCIM, SIOR**

President  
jmcrimmins@blauberg.com  
973.379.6644 x122

**ALESSANDRO (ALEX) CONTE, CCIM, SIOR**

Executive Vice President  
aconte@blauberg.com  
973.379.6644 x131

830 Morris Turnpike  
Suite 201  
Short Hills, NJ 07078

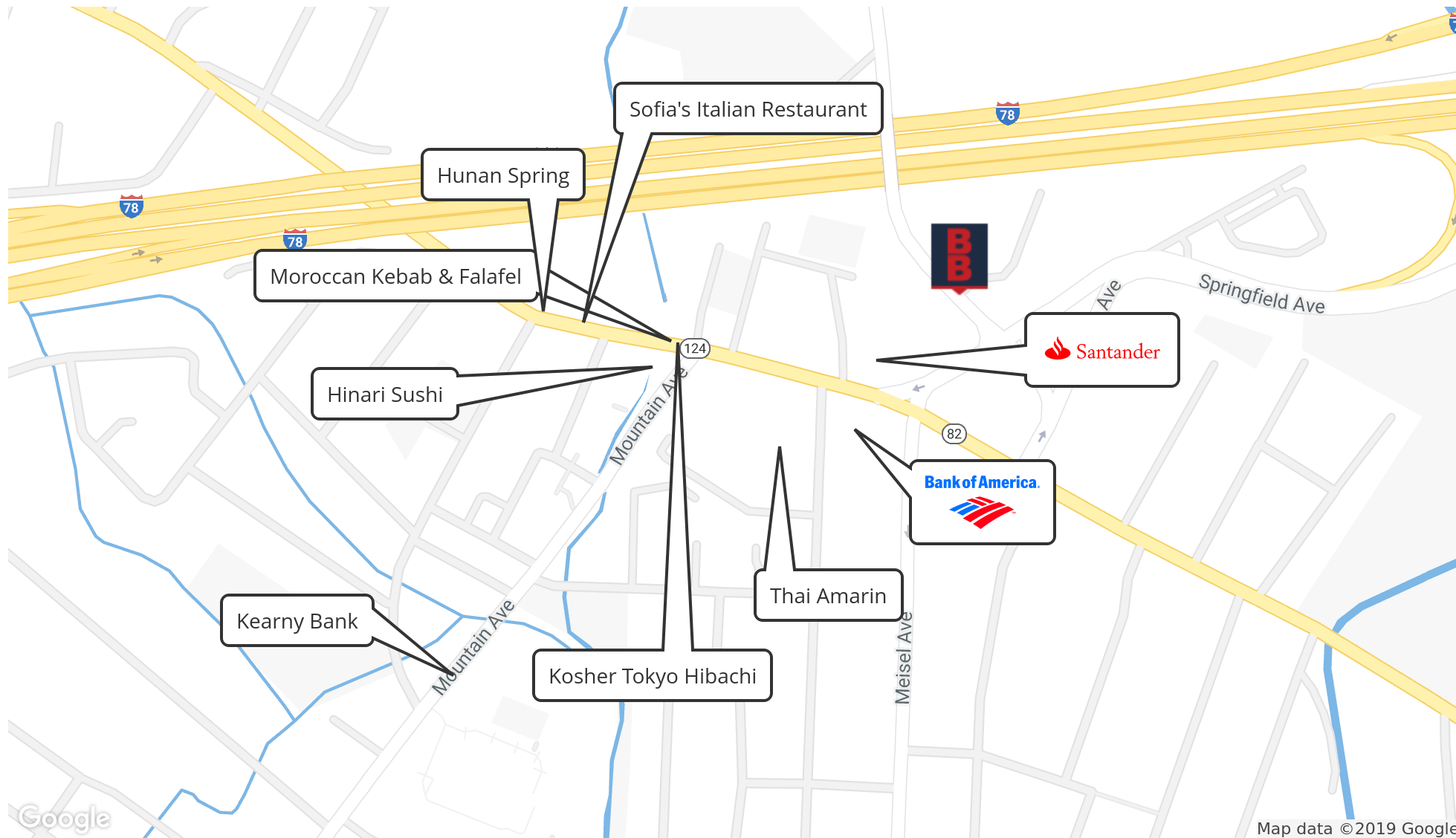
[www.blauberg.com](http://www.blauberg.com)



The information contained herein has been obtained from sources considered to be reliable, but no guarantee of its accuracy is made by this company. In addition, no representation is made respecting zoning, condition of title, dimensions, or any matters of a legal or environmental nature. Such matters should be referred to legal counsel for determination. Terms and conditions are subject to change without prior notice. Subject to errors and omissions.

# 2 EDISON PLACE

2 Edison Place, Springfield, NJ 07081



### For More Information, Contact

**PETER J. MURANO, JR., SIOR**

Senior Executive Director  
pjmurano@blauberg.com  
973.379.6644 x114

**JASON M. CRIMMINS, CCIM, SIOR**

President  
jmcrimmins@blauberg.com  
973.379.6644 x122

**ALESSANDRO (ALEX) CONTE, CCIM, SIOR**

Executive Vice President  
aconte@blauberg.com  
973.379.6644 x131

830 Morris Turnpike  
Suite 201  
Short Hills, NJ 07078

[www.blauberg.com](http://www.blauberg.com)



The information contained herein has been obtained from sources considered to be reliable, but no guarantee of its accuracy is made by this company. In addition, no representation is made respecting zoning, condition of title, dimensions, or any matters of a legal or environmental nature. Such matters should be referred to legal counsel for determination. Terms and conditions are subject to change without prior notice. Subject to errors and omissions.



# 2 EDISON PLACE

2 Edison Place, Springfield, NJ 07081



## POPULATION

	1 MILE	3 MILES	5 MILES
Total population	15,771	107,297	351,125
Median age	41.4	41.2	39.2
Median age (Male)	40.0	39.2	37.7
Median age (Female)	42.2	42.2	40.7

## HOUSEHOLDS & INCOME

	1 MILE	3 MILES	5 MILES
Total households	6,110	38,438	123,338
# of persons per HH	2.6	2.8	2.8
Average HH income	\$108,455	\$129,178	\$123,660
Average house value	\$515,744	\$538,980	\$538,071

\* Demographic data derived from 2010 US Census

### For More Information, Contact

**PETER J. MURANO, JR., SIOR**

Senior Executive Director  
pjmurano@blauberg.com  
973.379.6644 x114

**JASON M. CRIMMINS, CCIM, SIOR**

President  
jmcrimmins@blauberg.com  
973.379.6644 x122

**ALESSANDRO (ALEX) CONTE, CCIM, SIOR**

Executive Vice President  
aconte@blauberg.com  
973.379.6644 x131

830 Morris Turnpike  
Suite 201  
Short Hills, NJ 07078

[www.blauberg.com](http://www.blauberg.com)



The information contained herein has been obtained from sources considered to be reliable, but no guarantee of its accuracy is made by this company. In addition, no representation is made respecting zoning, condition of title, dimensions, or any matters of a legal or environmental nature. Such matters should be referred to legal counsel for determination. Terms and conditions are subject to change without prior notice. Subject to errors and omissions.



# 2 EDISON PLACE

2 Edison Place, Springfield, NJ 07081



Senior Executive Director

**PETER J. MURANO, JR., SIOR**

pjmurano@blauberg.com

973.214.9375



President

**JASON M. CRIMMINGS, CCIM, SIOR**

jmcimmings@blauberg.com

973.568.6611



Executive Vice President

**ALESSANDRO (ALEX) CONTE, CCIM, SIOR**

aconte@blauberg.com

973.432.1648



*For More Information, Contact*

**PETER J. MURANO, JR., SIOR**

Senior Executive Director  
pjmurano@blauberg.com  
973.379.6644 x114

**JASON M. CRIMMINGS, CCIM, SIOR**

President  
jmcimmings@blauberg.com  
973.379.6644 x122

**ALESSANDRO (ALEX) CONTE, CCIM, SIOR**

Executive Vice President  
aconte@blauberg.com  
973.379.6644 x131

830 Morris Turnpike  
Suite 201  
Short Hills, NJ 07078

[www.blauberg.com](http://www.blauberg.com)



The information contained herein has been obtained from sources considered to be reliable, but no guarantee of its accuracy is made by this company. In addition, no representation is made respecting zoning, condition of title, dimensions, or any matters of a legal or environmental nature. Such matters should be referred to legal counsel for determination. Terms and conditions are subject to change without prior notice. Subject to errors and omissions.