



10700

SANTA MONICA BLVD

2,100 SF

\$3.95-\$4.25/SF FSG

MEDICAL/OFFICE SPACE FOR LEASE



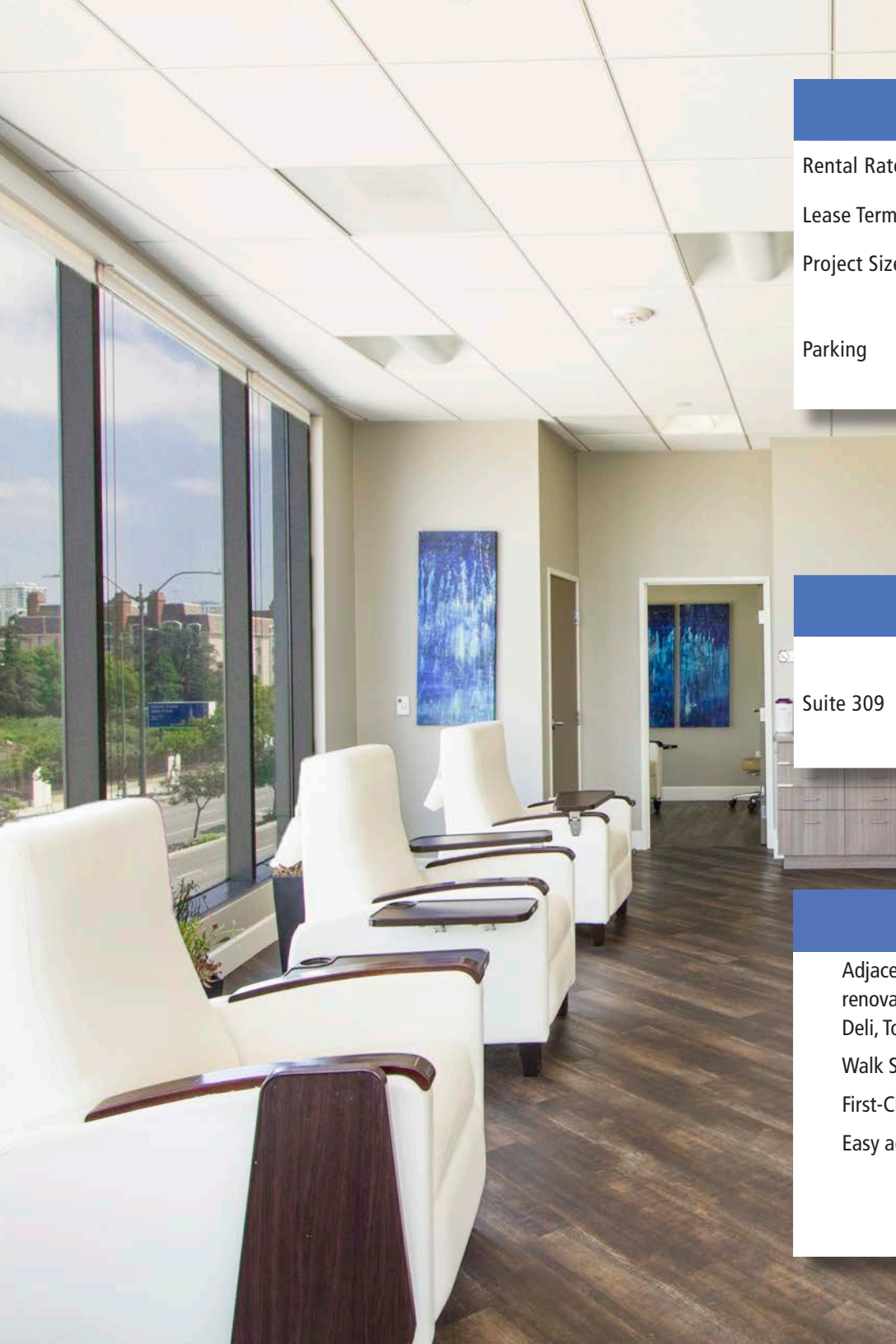
JOE KING

310.442.3375

jking@madisonpartners.net

License ID No.: 01195833





PROJECT OVERVIEW

Rental Rate	Office \$3.95 FSG Medical \$4.25/SF FSG
Lease Term	5-10 Years
Project Size	47,758 SF
Parking	3.8/1,000 SF \$200 Per Reserved Space \$125 Per Unreserved Space

CURRENT AVAILABILITY

Suite 309	2,100 SF	One window office, open plan with 2 restrooms and kitchen.
-----------	----------	--

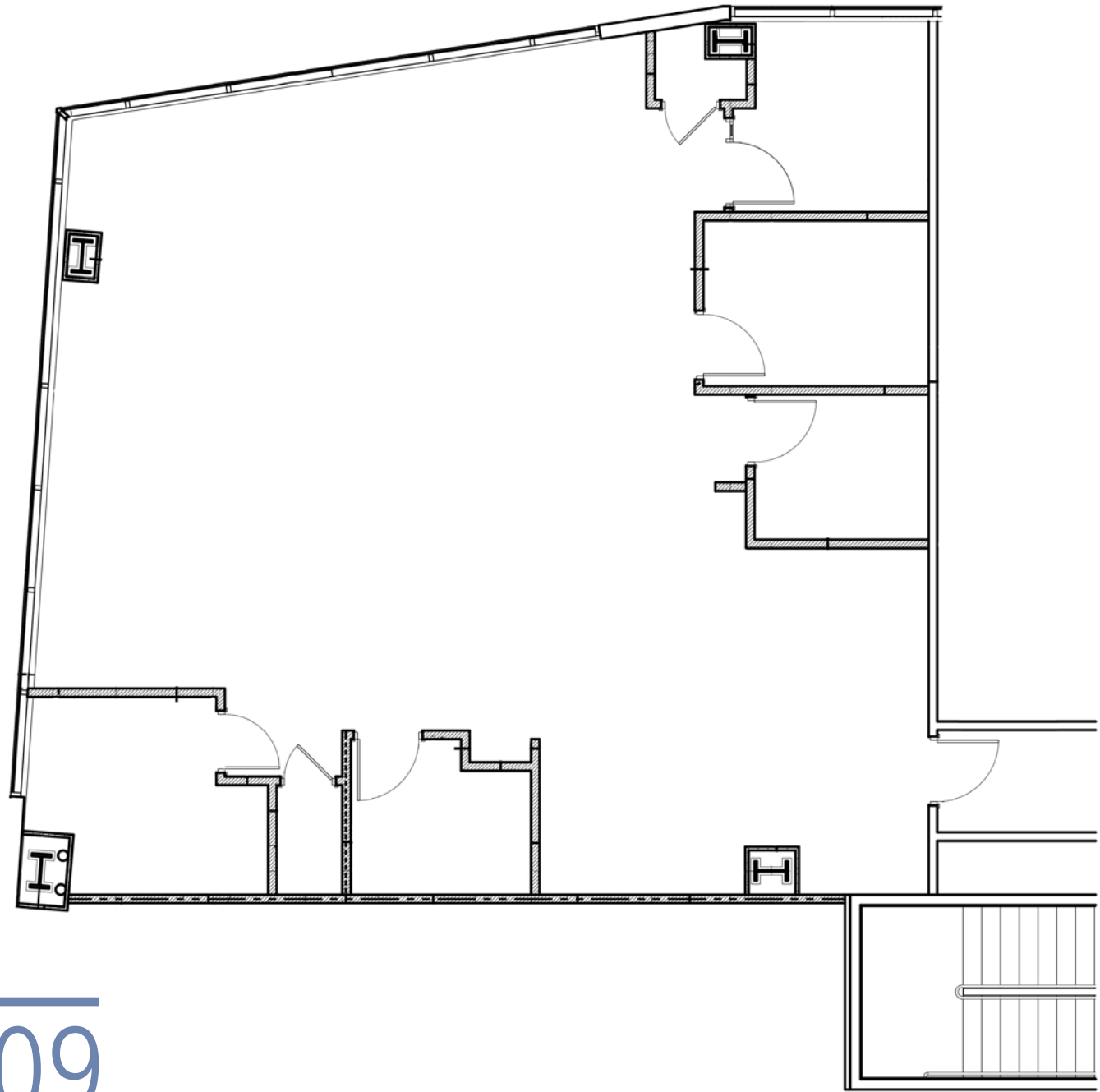
PROJECT FEATURES

Adjacent to the Westfield Century City shopping center which recently completed a \$1.2 billion renovation. The shopping center includes Eatataly, Mezza Garden, Rock Sugar, Shake Shack, Wexler's Deli, Toscanova, Petros, AMC 15 Theaters, and over 100 retail stores.

Walk Score: (83) Very Walkable

First-Class finishes and over-standard parking

Easy access to the 10 and 405 Freeways



SUITE 309

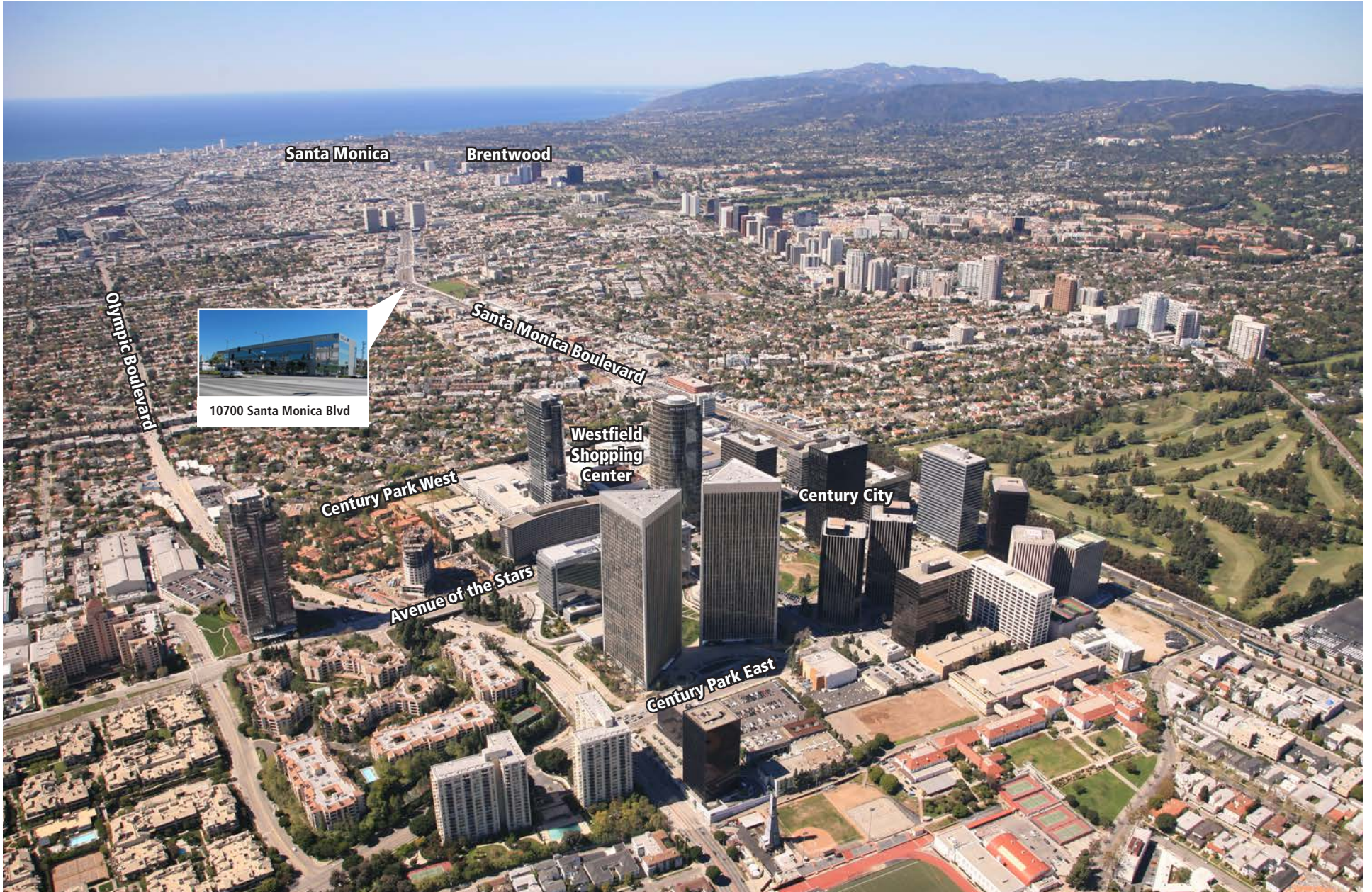


Westfield

- | | | | |
|----------------|----------------|----------------|---------------------|
| 2XU | Everything But | Macy's | Shake Shack |
| Ajisen Ramen | Water | Madewell | Sugarfina |
| Allen Edmonds | Free People | Maje | Suitsupply |
| All Saints | Fresh | Massis Kabob | Swarovski |
| Aloha Poke | Gearys Rolex | Nordstrom | Ted Baker |
| AMC Theaters | Botique | Oak+Fort | Tesla Motors |
| Apple Store | Gelson's | Obica | The Body Shop |
| Aritzia | H&M | Origins | The Coffee Bean |
| Aveda | Javier's | Petros | The Container Store |
| Bacio di Latte | J Crew | Randy's Donuts | Tiffany & Co. |
| Bloomingdale's | Kafe Bougasta | RockSugar | Toscanova |
| Cole Haan | Kendra Scott | Rodd & Gunn | Travis Mathew |
| Cotton On | La Colombe | Saje | Tumi |
| Eataly | L'Occitane en | Sandro | Typo |
| Equinox | Provence | Sephora | |

and much more...





JOE KING

310.442.3375

jking@madisonpartners.net

License ID No.: 01195833

12121 WILSHIRE BOULEVARD | LOS ANGELES | 310.820.3410 | WWW.MADISONPARTNERS.NET



Copyright 2018 Madison Partners DRE License No. 00978067. The information above has been obtained from sources believed reliable. While we do not doubt its accuracy, we have not verified it and make no guarantee, warranty or representation about it. It is your responsibility to independently confirm its accuracy and completeness. Any projections, opinions, assumptions or estimates used are for example only and do not represent the current or future performance of the property. The value of this transaction to you depends on tax and other factors which should be evaluated by your tax, financial and legal advisors. You and your advisors should conduct a careful, independent investigation of the property to determine to your satisfaction the suitability of the property for your needs. Updated 04.29.19