

Lab Space possible

HOLLIS BUSINESS CENTER

1480 64TH STREET, EMERYVILLE, CA

3RD FLOOR
VITRUAL TOUR



For leasing information, please contact:

TONY BEATTY, SIOR
+1 925 944 2172
tony.beatty@am.jll.com
Lic.#: 00945197

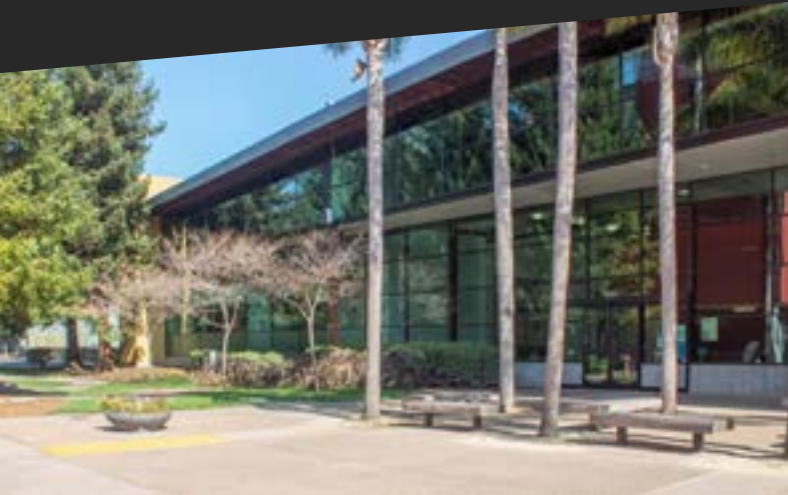
GRANT YEATMAN
+1 510 465 9406
grant.yeatman@am.jll.com
Lic.#: 01972905



JONES LANG LASALLE BROKERAGE, INC.
Lic.#: 01856260

DISCLAIMER

Copyright © 2020 Jones Lang LaSalle IP, Inc. All rights reserved. All information contained herein is from sources deemed reliable; however, no representation or warranty is made to the accuracy thereof.



Property Highlights:

- Class A office building
- Vibrant tenant mix
- Showers available in 1st floor restroom
- Workout facility on-site
- Central Emeryville location within walking distance of numerous amenities
- Emery-Go-Round stops within steps of building to and from the MacArthur BART station
- Accessible to Interstate 80 at Ashby or Powell
- Parking: 2.75/1,000
- **Up to 1,000 amps to floor**

Availability:

Suite No.	R.S.F.	Availability Date
160	3,129	Now
250	3,519	Now
3rd Floor	30,470	Now



HOLLIS BUSINESS CENTER

1480 64TH STREET, EMERYVILLE, CA



For leasing information, please contact:

TONY BEATTY, SIOR
+1 925 944 2172
tony.beatty@am.jll.com
Lic.#: 00945197

GRANT YEATMAN
+1 510 465 9406
grant.yeatman@am.jll.com
Lic.#: 01972905



JONES LANG LASALLE BROKERAGE, INC.
Lic.#: 01856260

DISCLAIMER
Copyright © 2020 Jones Lang LaSalle IP, Inc. All rights reserved. All information contained herein is from sources deemed reliable; however, no representation or warranty is made to the accuracy thereof.

HOLLIS BUSINESS CENTER

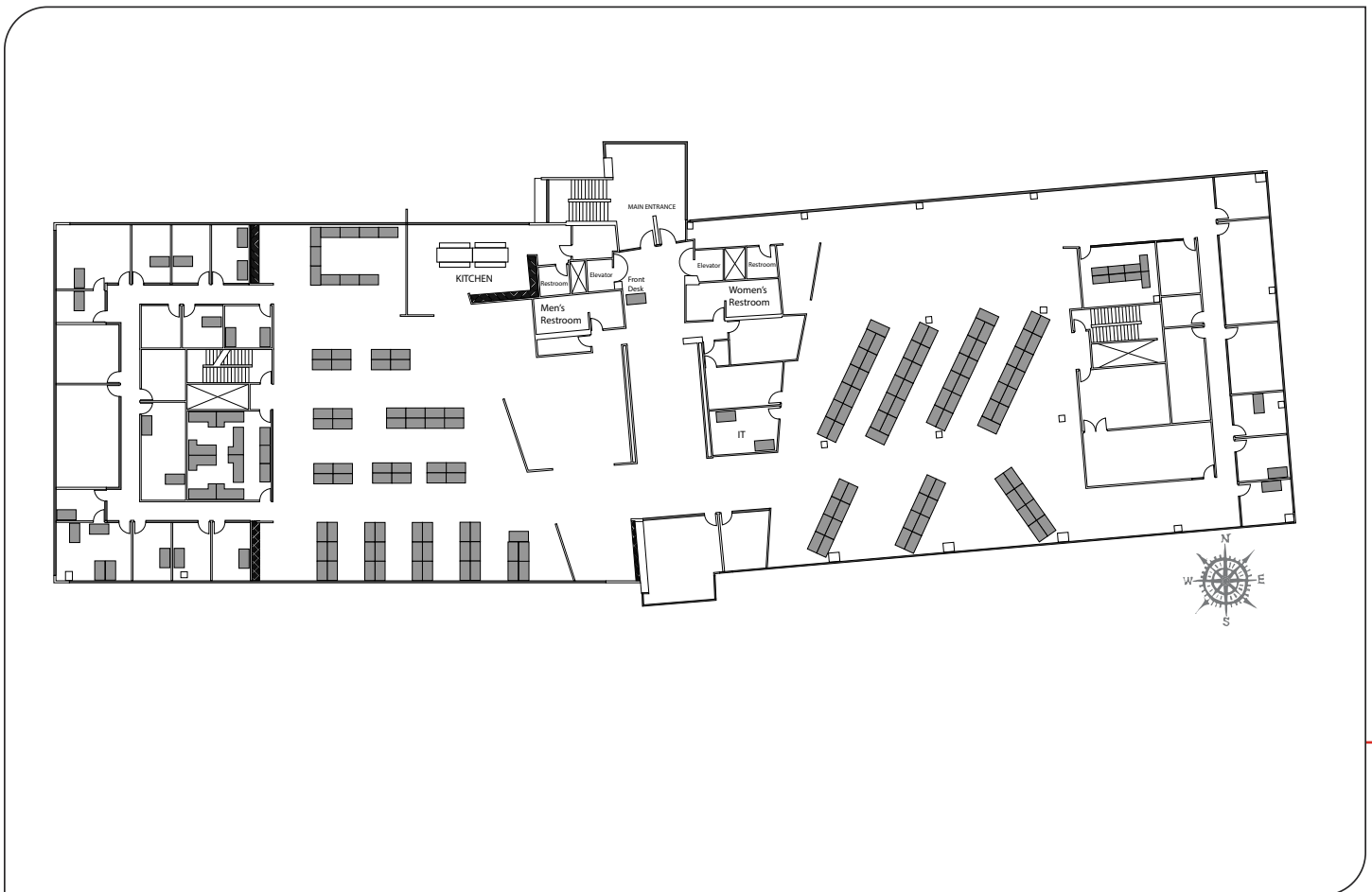
1480 64TH STREET

EMERYVILLE, CA

FLOOR PLANS

Suite 300 (Full Floor)

30,470 RSF



For leasing information, please contact:

TONY BEATTY, SIOR

+1 925 944 2172

tony.beatty@am.jll.com

Lic.#: 00945197

GRANT YEATMAN

+1 510 465 9406

grant.yeatman@am.jll.com

Lic.#: 01972905



JONES LANG LASALLE BROKERAGE, INC.
Lic.#: 01856260

DISCLAIMER

Copyright © 2020 Jones Lang LaSalle IP, Inc. All rights reserved. All information contained herein is from sources deemed reliable; however, no representation or warranty is made to the accuracy thereof.

HOLLIS BUSINESS CENTER

1480 64TH STREET

EMERYVILLE, CA

FLOOR PLANS ○

1st Floor

3,129 RSF

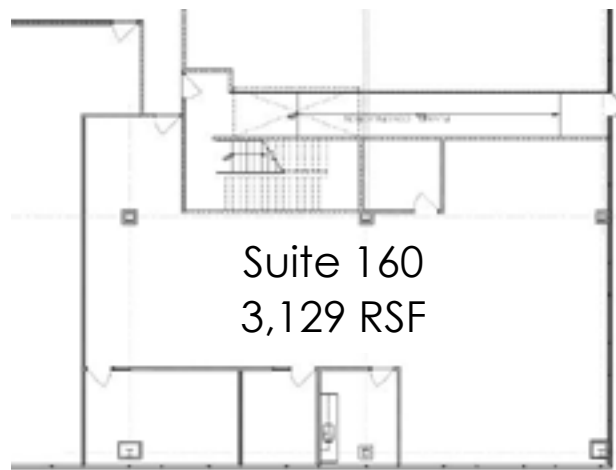


EXHIBIT A

Potential Floor Plan Layout (Not to Scale)



For leasing information, please contact:

TONY BEATTY, SIOR
+1 925 944 2172
tony.beatty@am.jll.com
Lic.#: 00945197

GRANT YEATMAN
+1 510 465 9406
grant.yeatman@am.jll.com
Lic.#: 01972905



JONES LANG LASALLE BROKERAGE, INC.
Lic.#: 01856260

DISCLAIMER

Copyright © 2020 Jones Lang LaSalle IP, Inc. All rights reserved. All information contained herein is from sources deemed reliable; however, no representation or warranty is made to the accuracy thereof.

HOLLIS BUSINESS CENTER

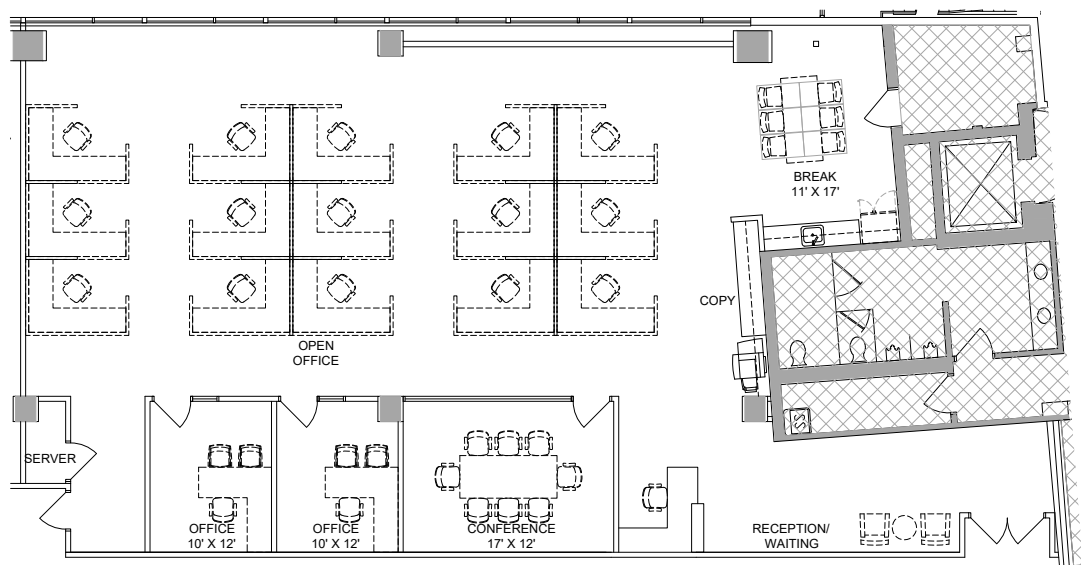
1480 64TH STREET

EMERYVILLE, CA

FLOOR PLANS ○

Suite 250

3,519 RSF



Potential Floor Plan Layout (Not to Scale)



For leasing information, please contact:

TONY BEATTY, SIOR
+1 925 944 2172
tony.beatty@am.jll.com
Lic.#: 00945197

GRANT YEATMAN
+1 510 465 9406
grant.yeatman@am.jll.com
Lic.#: 01972905



JONES LANG LASALLE BROKERAGE, INC.
Lic.#: 01856260