

FOR SALE

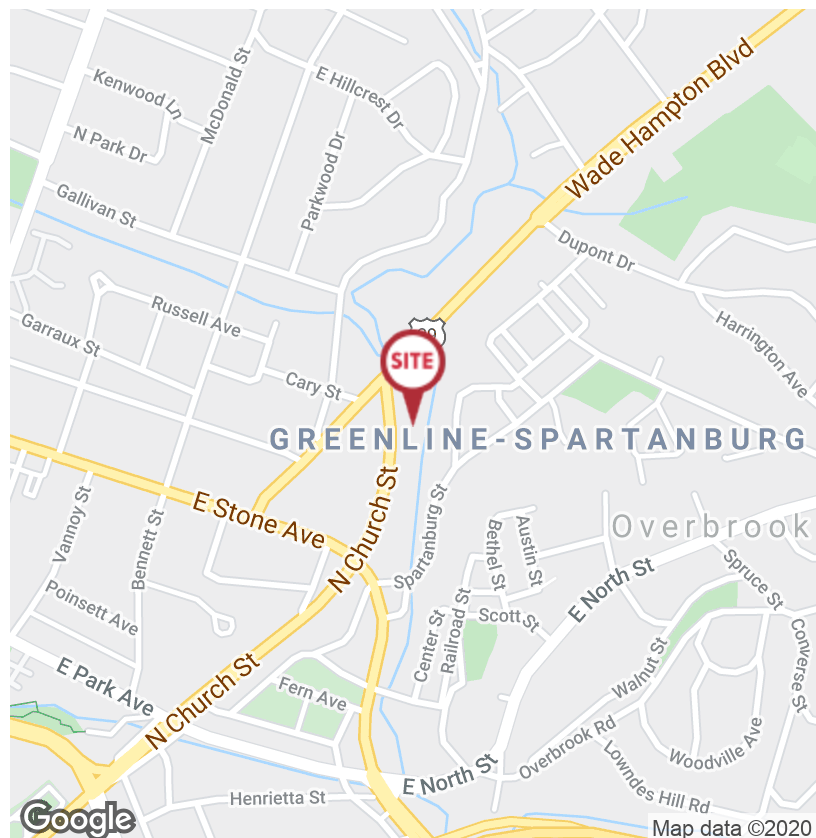
1068 N Church St, Greenville, SC 29601

NAI Earle Furman



±7,488 SF Office/Retail Building

- Former use: Bank
- Construction: Brick over frame
- ±45 parking spaces
- Monument signage
- Carpeted offices, reception area, and conference room
- Spacious employee lounge
- Elevator
- Safe room
- Lot size: ±0.907 acre
- Zoning: C-2, City of Greenville
- Located just south of Wade Hampton Blvd and across from the new NorthPointe walking neighborhood community
- Sale Price: \$1,300,500



✉ **Joseph "Earle" Furman, Jr., SIOR**
O: +1 864 232 9040
C: +1 864 230 9102
efurman@naiearlefurman.com

No Warranty Or Representation, Express Or Implied, Is Made As To The Accuracy Of The Information Contained Herein, And The Same Is Submitted Subject To Errors, Omissions, Change Of Price, Rental Or Other Conditions, Prior Sale, Lease Or Financing, Or Withdrawal Without Notice, And Of Any Special Listing Conditions Imposed By Our Principals. No Warranties Or Representations Are Made As To The Condition Of The Property Or Any Hazards Contained Therein Are Any To Be Implied.

📍 **101 E Washington St**
Greenville, SC 29601
naief.com

Exterior Images

1068 N Church Street, Greenville, SC



Side View of Property



Rear View of Property



Monument Signage

✉ **Joseph "Earle" Furman, Jr., SIOR**
O: +1 864 232 9040
C: +1 864 230 9102
efurman@naiearlefurman.com

No Warranty Or Representation, Express Or Implied, Is Made As To The Accuracy Of The Information Contained Herein, And The Same Is Submitted Subject To Errors, Omissions, Change Of Price, Rental Or Other Conditions, Prior Sale, Lease Or Financing, Or Withdrawal Without Notice, And Of Any Special Listing Conditions Imposed By Our Principals. No Warranties Or Representations Are Made As To The Condition Of The Property Or Any Hazards Contained Therein Are To Be Implied.

NAI Earle Furman

Interior Images

1068 N Church Street, Greenville, SC



Conference Room



Reception and Office Area



Office Area



Elevator & 2nd Floor Entrance



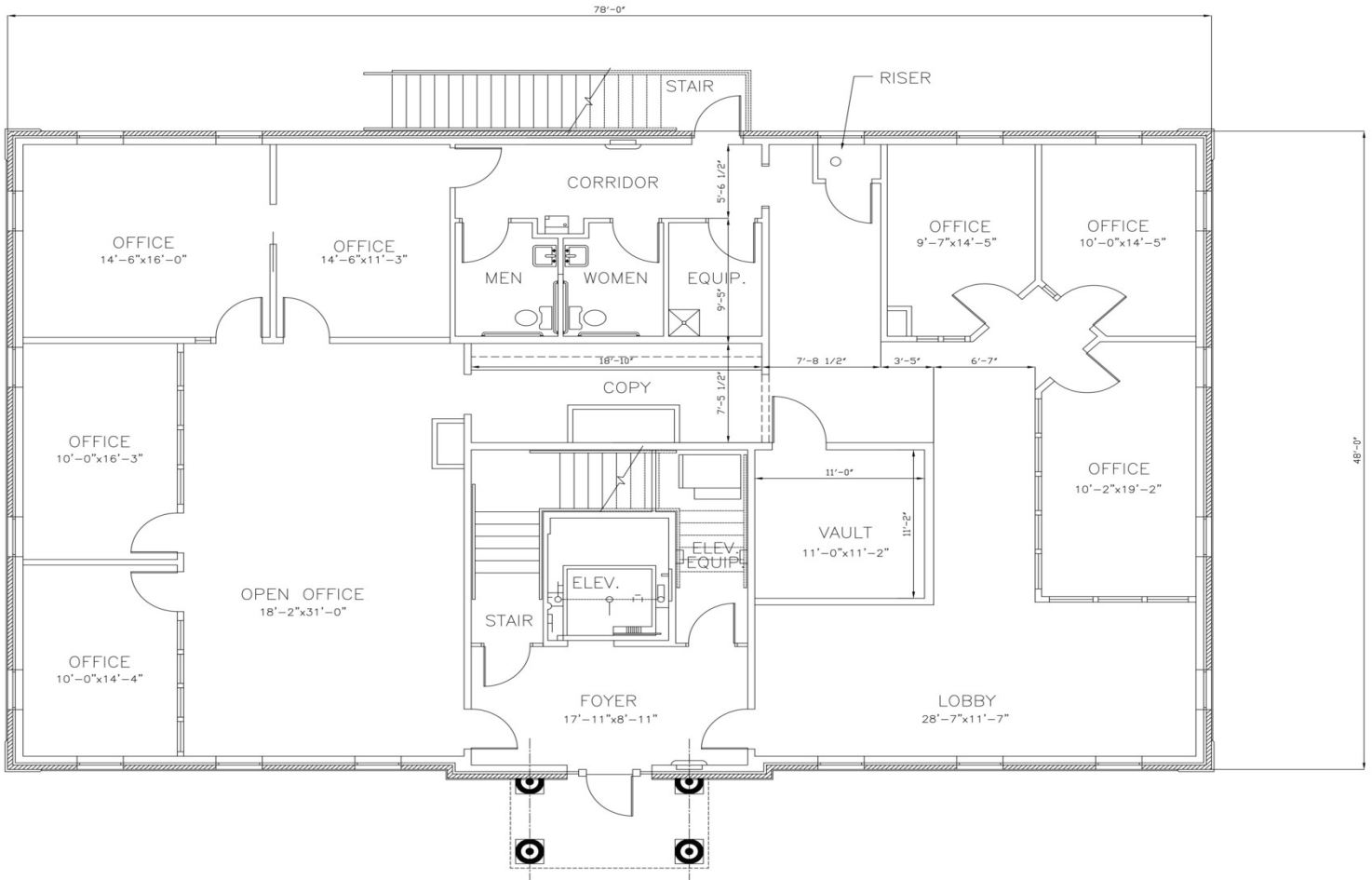
Employee Lounge



Storage and Work Area

FLOOR PLANS

1068 N Church Street, Greenville, SC

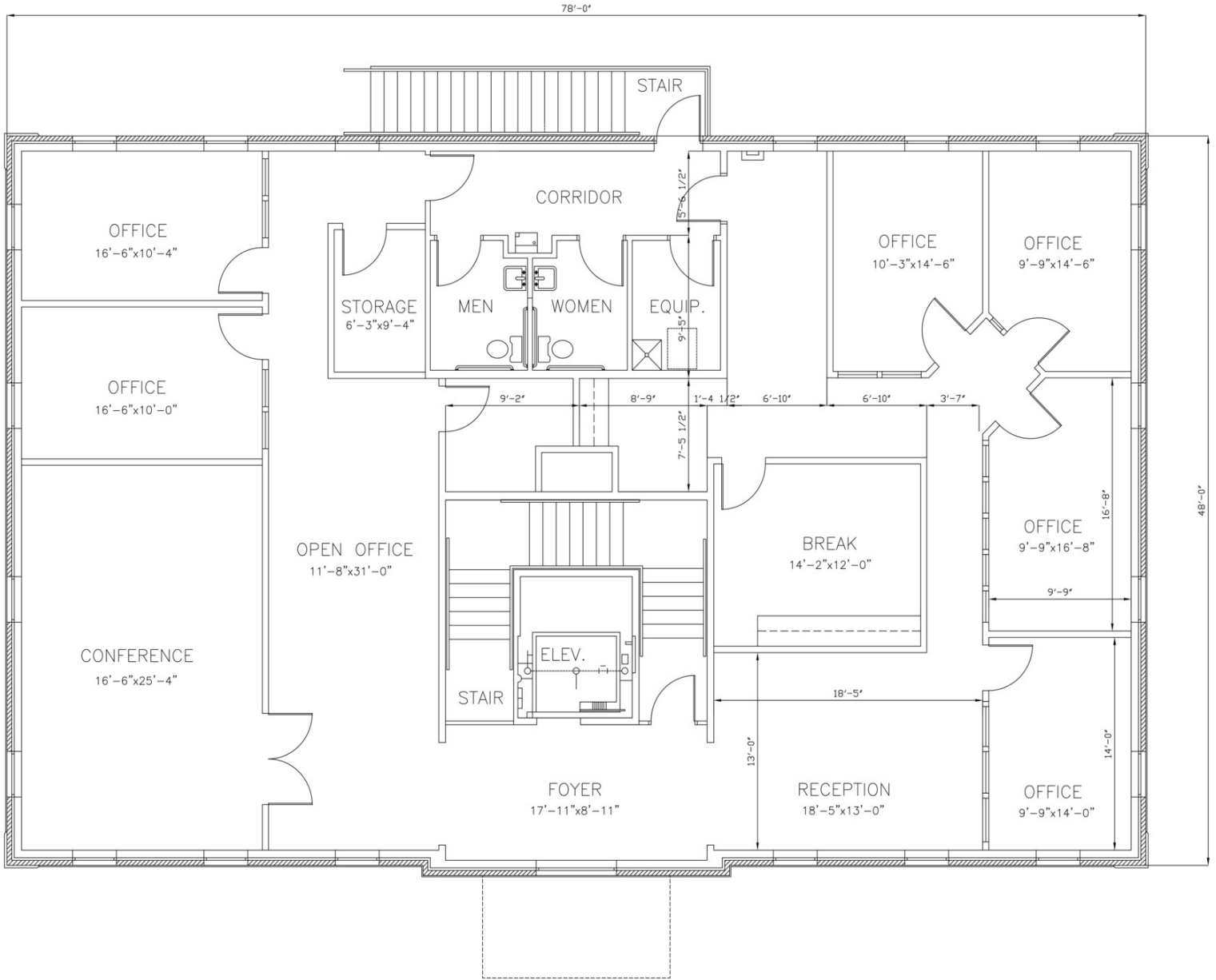


FIRST FLOOR PLAN

SCALE: 1/4" = 1'-0"

FLOOR PLANS

1068 N Church Street, Greenville, SC

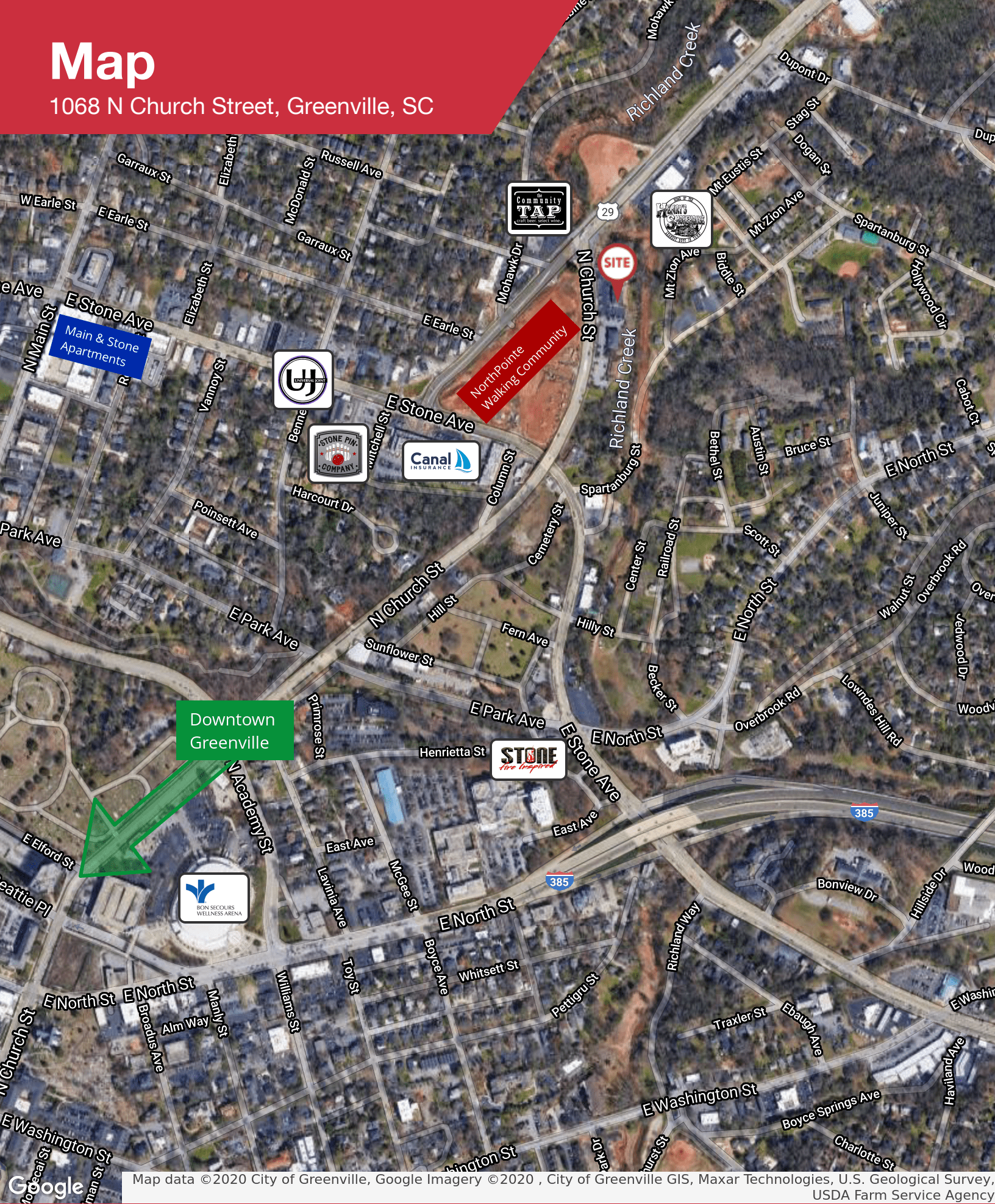


SECOND FLOOR PLAN

SCALE: 1/4" = 1'-0"

Map

1068 N Church Street, Greenville, SC



Downtown
Greenville

NorthPointe
Walking Community

Main & Stone
Apartments



Map data ©2020 City of Greenville, Google Imagery ©2020 , City of Greenville GIS, Maxar Technologies, U.S. Geological Survey, USDA Farm Service Agency

✉ Joseph "Earle" Furman, Jr., SIOR
O: +1 864 232 9040
C: +1 864 230 9102
efurman@naearlefurman.com

No Warranty Or Representation, Express Or Implied, Is Made As To The Accuracy Of The Information Contained Herein, And The Same Is Submitted Subject To Errors, Omissions, Change Of Price, Rental Or Other Conditions, Prior Sale, Lease Or Financing, Or Withdrawal Without Notice, And Of Any Special Listing Conditions Imposed By Our Principals No Warranties Or Representations Are Made As To The Condition Of The Property Or Any Hazards Contained Therein Are Any To Be Implied.

