



FEATURES:

- Desirable Sports Arena Industrial Submarket
- Professionally maintained and managed
- Immediate freeway access
- Grade level loading door 10' x 12'
- ± 12'-14' clear height
- Gas service available to building
- High speed internet available
- Suite identity and monument signage
- Electrical: 3 phase, 100 amps, 120/208 V

AVAILABILITY:

2775 SUITE 10: ± 2,000 SF Available

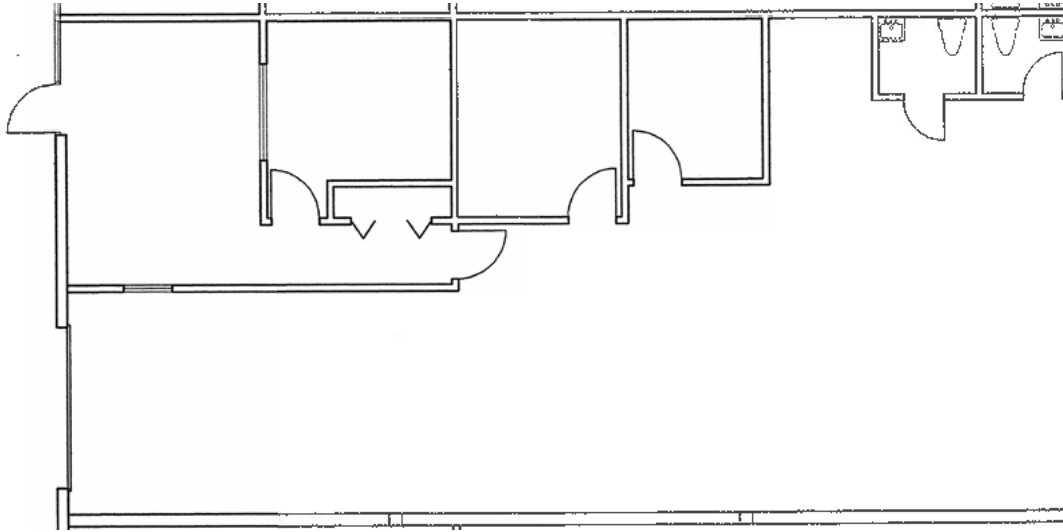
LEASE RATE: \$1.54 MG + \$0.16 CAM Charge



TIM GOSSELIN
Vice President
(760) 822-3730
CalBRE Lic#: 01495432

All information furnished regarding property for sale, rental or financing is from sources deemed reliable, but no warranty or representation is made to the accuracy thereof and same is submitted to errors, omissions, change of price, rental or other conditions prior to sale, lease or financing or withdrawal without notice. No liability of any kind is to be imposed on the broker herein.

INDUSTRIAL | FOR LEASE | SPORTS ARENA
2775-2785 KURTZ STREET, SAN DIEGO 92110



Electrical panel: 3 phase, 100 amps, 120/208 V



TIM GOSSELIN

Vice President

(760) 822-3730

CalBRE Lic#: 01495432

All information furnished regarding property for sale, rental or financing is from sources deemed reliable, but no warranty or representation is made to the accuracy thereof and same is submitted to errors, omissions, change of price, rental or other conditions prior to sale, lease or financing or withdrawal without notice. No liability of any kind is to be imposed on the broker herein.