

CUSHMAN &  
WAKEFIELD



FOR SALE

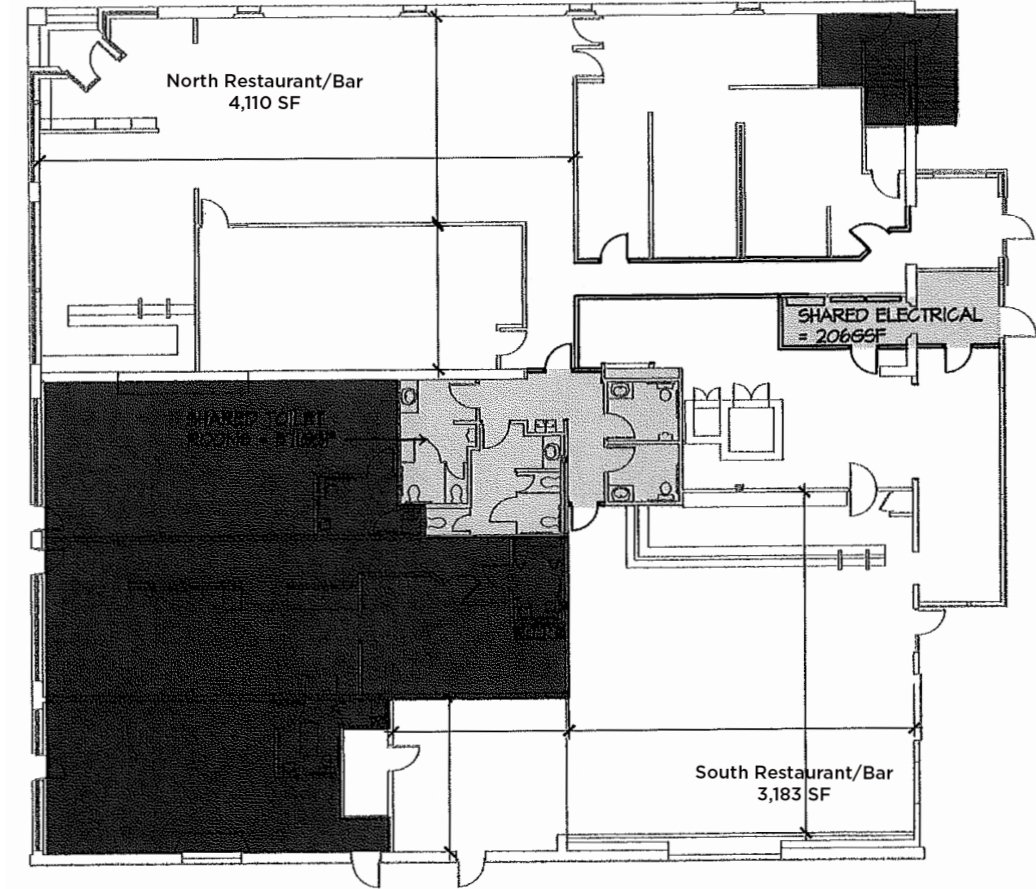
301

SE Douglas Street  
Lee's Summit, MO

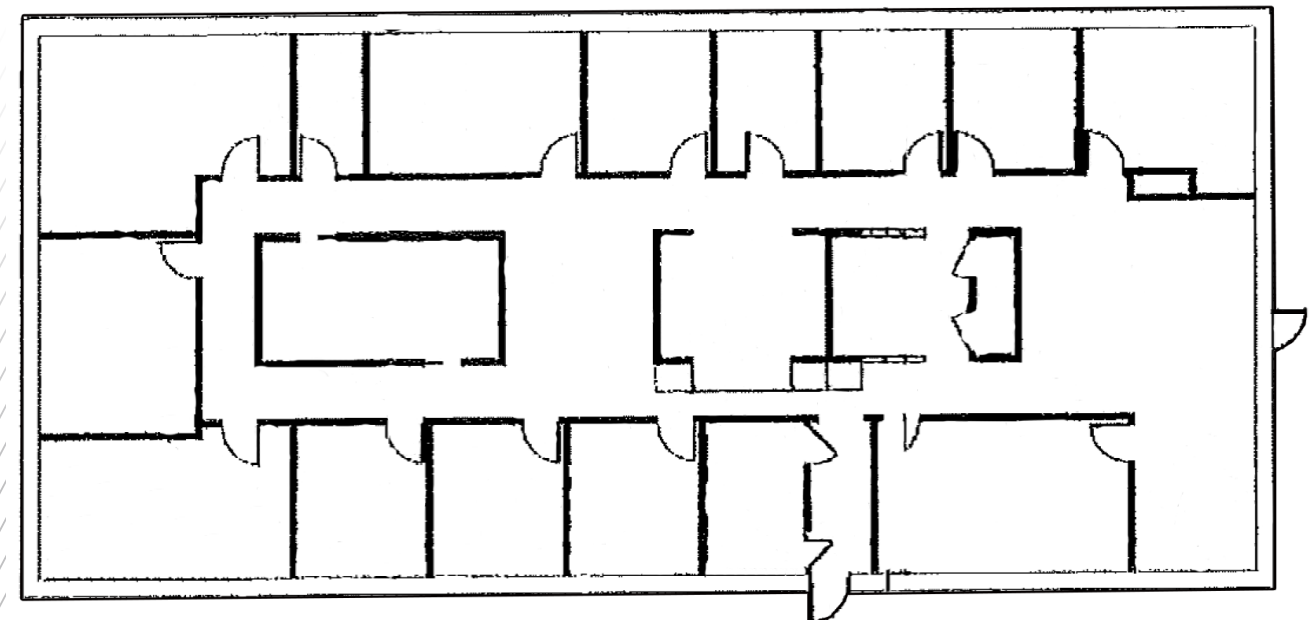
# PROPERTY HIGHLIGHTS

- Historic mixed-use property in the heart of Downtown Lee's Summit
- Building is currently leased to four tenants with one vacant retail suite (809 SF)
- 15,353 SF building
- Llywelyn's Pub serves as the anchor tenant
- Mixed-use building with an office tenant on the second floor
- Located at Main and Main in Downtown Lee's Summit
- Priced at \$2,700,000 (\$175 PSF)

## FIRST FLOOR PLAN



## SECOND FLOOR PLAN



# LOCATION AERIAL



## CONTACT

GIB KERR, CCIM  
Director  
+1 816 412 0212  
gib.kerr@cushwake.com

JEFFREY BENTZ  
Senior Associate  
+1 816 412 0281  
jeffrey.bentz@cushwake.com

