

FOR SALE

±8,512 SF Industrial Building

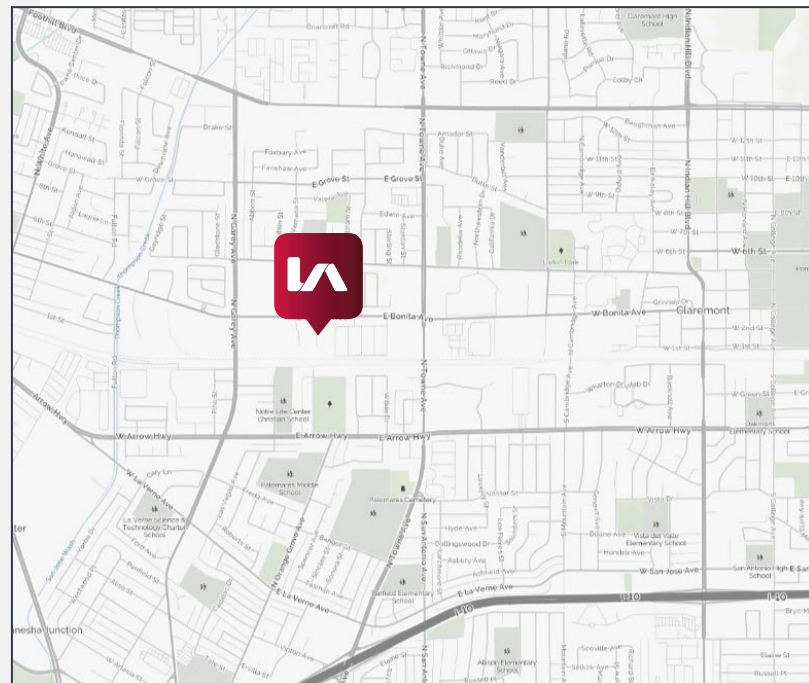
2720

KIMBALL AVENUE
POMONA, CALIFORNIA 91767



PROPERTY FEATURES

- ±8,512 SF Freestanding Industrial/Warehouse Building
- ±1,400 SF of Office Space
- Located on a Quiet Cul-De-Sac in Business Park Setting
- 1987 CTU Construction on ±0.57 Acre Parcel
- 24' Minimum Clearance Height
- Two (2) Ground Level Doors 14'x12'
- 400 Amps of 3-Phase-240 Volt Power
- ±7,500 SF Yard Area



FOR MORE INFORMATION PLEASE CONTACT:

Brian Melkesian, Senior Vice President/Principal

D 909.373.2943

bmelkesian@lee-assoc.com

DRE #01839590

Lee & Associates® - Ontario

3535 Inland Empire Blvd, Ontario, CA 91764 | 909.989.7771 | lee-assoc.com
Corp ID 00976995

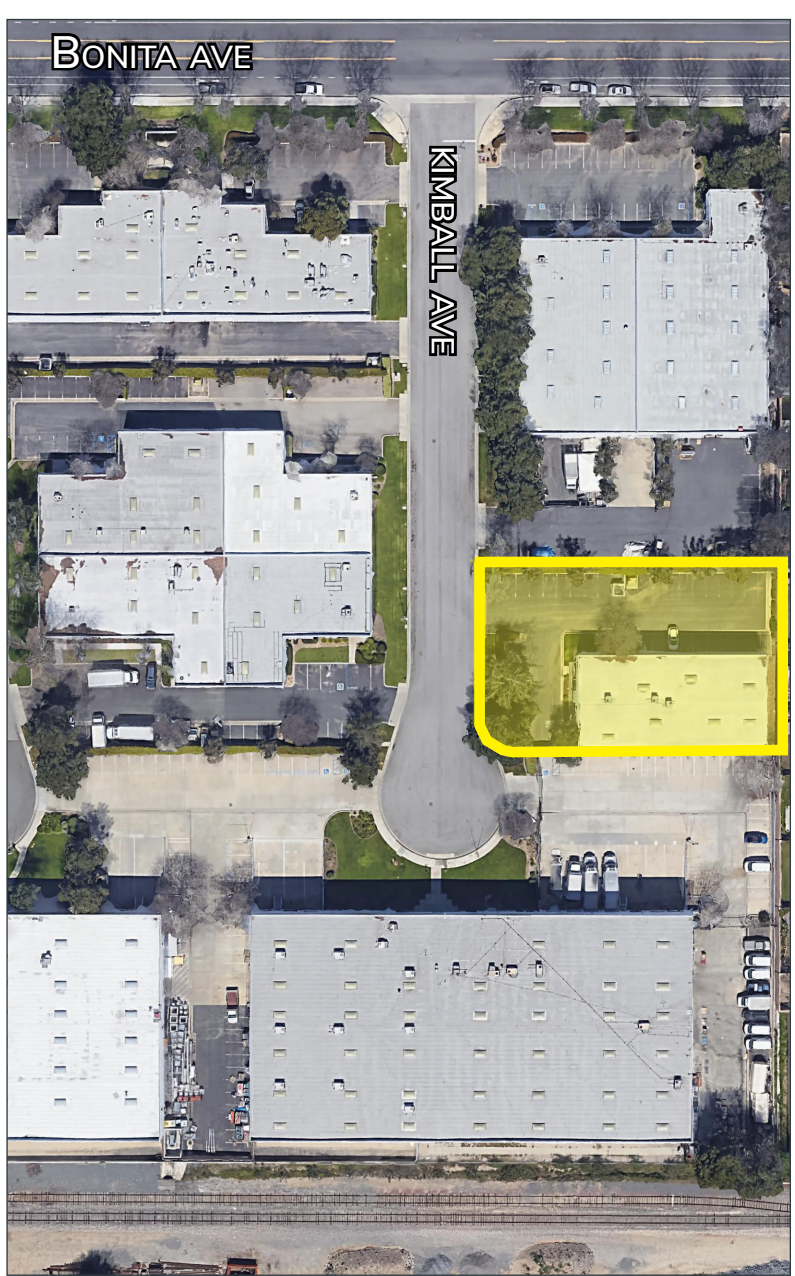
All information furnished regarding property for sale, rental or financing is from sources deemed reliable, but no warranty or representation is made to the accuracy thereof and same is submitted to errors, omissions, change of price, rental or other conditions prior to sale, lease or financing or withdrawal without notice. No liability of any kind is to be imposed on the broker herein.

FOR SALE

±8,512 SF Industrial Building

2720

KIMBALL AVENUE
POMONA, CALIFORNIA 91767



FOR MORE INFORMATION PLEASE CONTACT:

Brian Melkesian, Senior Vice President/Principal

D 909.373.2943

bmelkesian@lee-assoc.com

DRE #01839590

Lee & Associates® - Ontario

3535 Inland Empire Blvd, Ontario, CA 91764 | 909.989.7771 | lee-assoc.com
Corp ID 00976995

All information furnished regarding property for sale, rental or financing is from sources deemed reliable, but no warranty or representation is made to the accuracy thereof and same is submitted to errors, omissions, change of price, rental or other conditions prior to sale, lease or financing or withdrawal without notice. No liability of any kind is to be imposed on the broker herein.