

McDowell Mountain Business Park | Industrial Space

# FOR LEASE

±3,607 SQ. FT.

Office/Warehouse

16413 N 91st Street | Suite C145 | Scottsdale, Arizona 85260

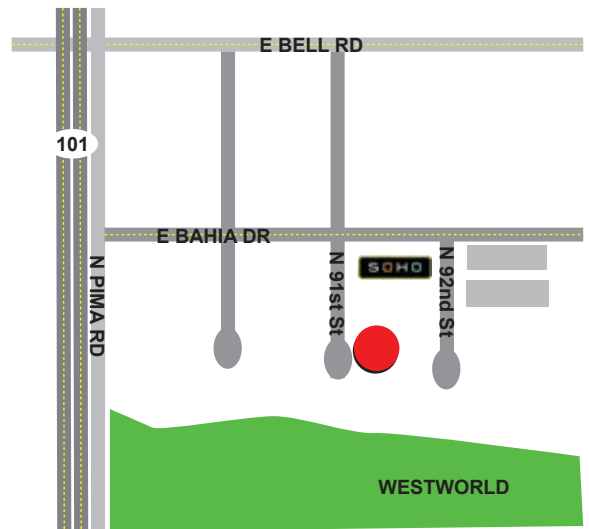


## FIRST FLOOR ±2,513 sf

- Reception
- Five (5) offices + Workspace
- Restroom
- Warehouse with roll-up door

## SECOND FLOOR MEZZANINE ±1,094 sf

- Three (3) offices
- Work area
- Copy/file room
- Restroom



For further property information or to schedule a tour please contact:



### Randy Shell

Designated Broker

C 480.694.4100

O 480.443.3992

randy@shellcommercial.com



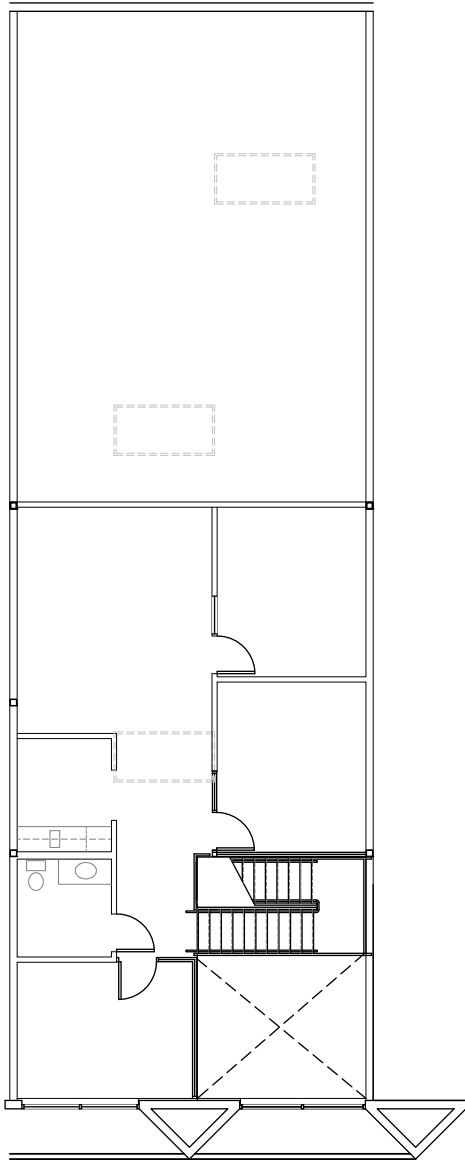
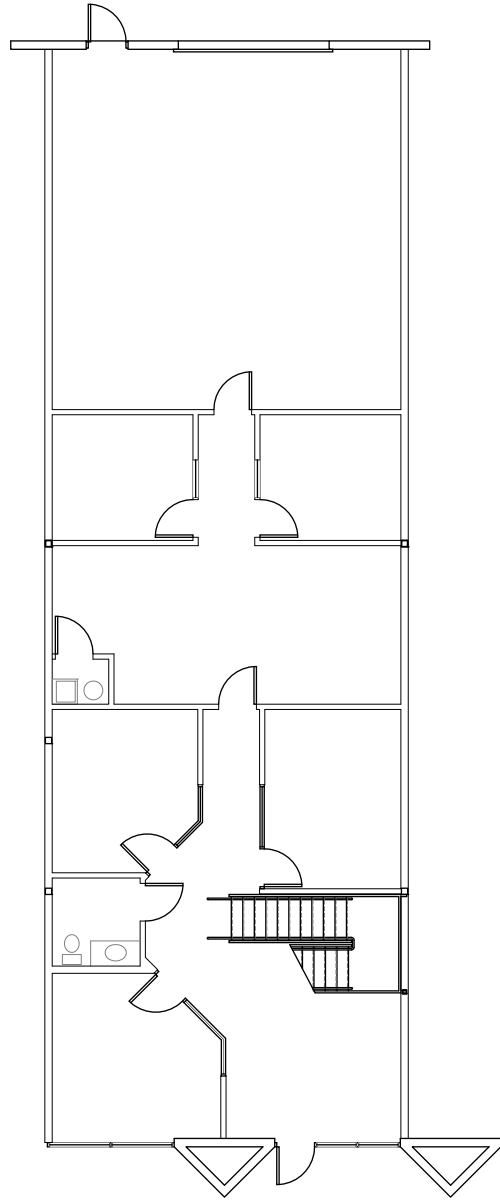
Serving Scottsdale Airpark & Greater Phoenix

480.443.3992 shellcommercial.com



16410 N 91st Street | Suite 112 | Scottsdale, Arizona 85260

The above is subject to prior sales and leasing. This information has been secured from sources we believe to be reliable, but we make no representation or warranties, expressed or implied as to the accuracy of this information.


**SECOND FLOOR PLAN**

**FIRST FLOOR PLAN**

# SUITE C145 FLOOR PLAN

**NOT TO SCALE**

FIRST FLOOR	2513 sf
SECOND FLOOR	1094 sf
<b>TOTAL</b>	<b>3607 sf</b>

All information furnished regarding property for sale, rental or financing is from sources deemed reliable, but no warranty or representation is made to the accuracy thereof and same is submitted to errors, omissions, change of price, rental or other conditions, prior to sale, lease or financing or withdrawal without notice. No liability of any kind is to be imposed on the broker herein. This information has been secured from sources deemed reliable, however, we make no warranties as to its accuracy.

