

# 109 WEST BROADWAY



# SPACE DETAILS

## LOCATION

Northeast corner of West Broadway and Reade Street

## APPROXIMATE SIZE

Ground Floor 1,400 SF

## CEILING HEIGHT

Ground Floor 16 FT

## FRONTAGE

90 FT of wraparound

## TERM

10 years

## POSSESSION

Arranged

## SITE STATUS

Currently A Summer Day Café

## NEIGHBORS

Sushi of Gari, Serafina, Starbucks, Balloon Saloon, Jacadi, Zucker's Bagels & Smoked Fish, Nish Nush, Sweetgreen and The Odeon

## COMMENTS

Rare corner opportunity

Fully vented with all restaurant infrastructure in place

400-SF enclosed patio with seating

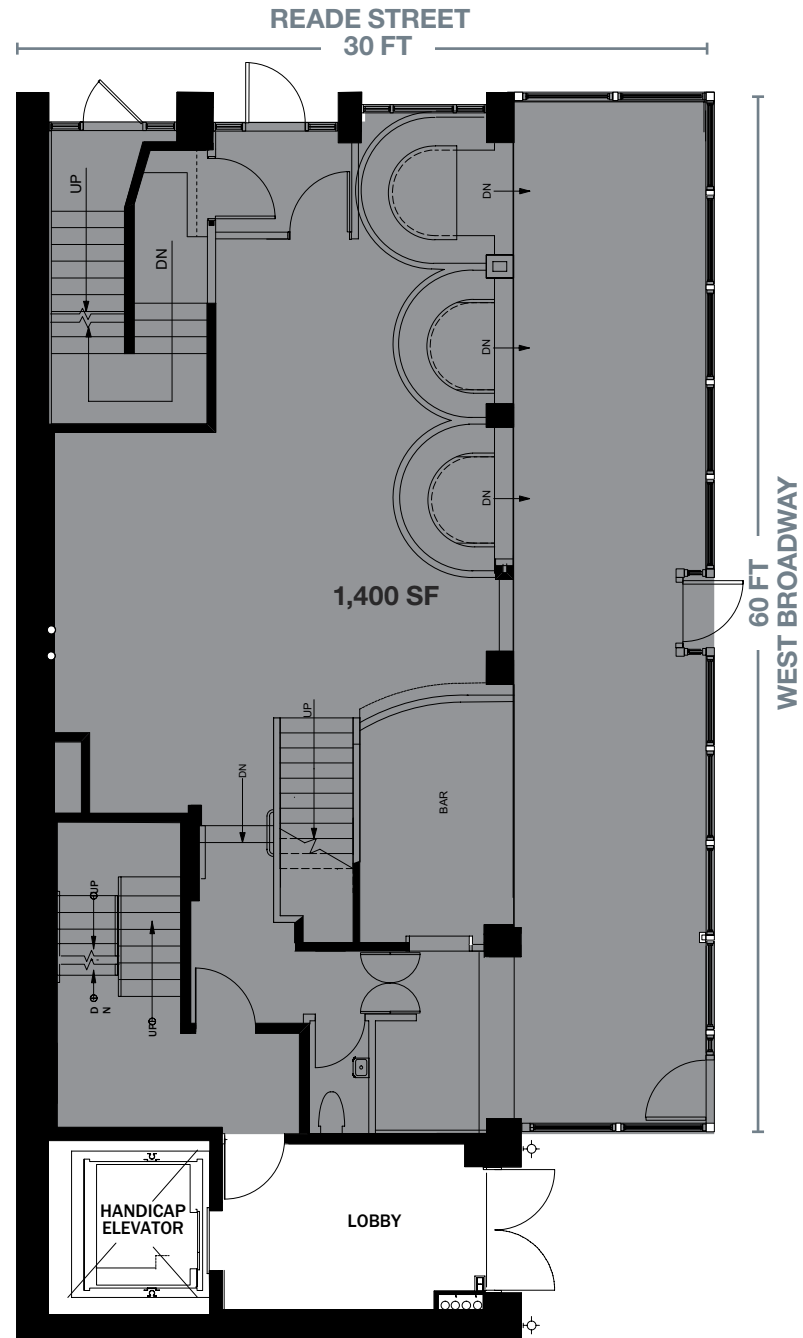
Restrooms in place

Located in a neighborhood with dense residential and office population

Direct access to the Chambers Street **1 2 3** subway lines servicing 6.9 million patrons per year

All uses considered

## GROUND FLOOR





# INTERIOR IMAGES





# AREA RETAIL



## CONTACT EXCLUSIVE AGENTS

**BRADLEY SOME**  
212.916.3385  
bradley.some@ngkf.com

**JASON PRUGER**  
212.372.2092  
jpruger@ngkf.com

