

7219 W. Sahara Ave. Ste. 120  
LAS VEGAS, NEVADA 89117

**OFFICE SPACE  
FOR LEASE**

2,500 Sq. Ft. Office  
\$1.30 NNN (\$3250.00)  
\$0.35 CAMS (\$875.00)  
Total (\$4125.00)

- ◆ 5 Offices
- ◆ Conference Room
- ◆ Reception Area
- ◆ Waiting Room
- ◆ Storage Room
- ◆ Break Room
- ◆ 2 Restrooms
- ◆ Drinking Fountain

Located west of Rainbow at  
Tenaya Way. Centrally located,  
minutes to Summerlin,  
Las Vegas Strip and US-95.



**PRIORITY ONE COMMERCIAL**  
REAL ESTATE BROKERAGE

7259 W. SAHARA AVE. STE. 110  
LAS VEGAS, NV. 89117

WWW.PRIORITYONECOMMERCIAL.COM



**CYNTHIA A. INMAN**  
Owner/Corporate Broker  
Certified Property Manager  
702.228.7464  
cinman@pocl.com

THE INFORMATION CONTAINED HEREIN WAS OBTAINED BY SOURCES WE BELIEVE TO BE RELIABLE, HOWEVER, NO WARRANTY OR GUARANTEE EITHER EXPRESSED OR IMPLIED IS MADE TO ACCURACY HEREOF. ALL SUCH INFORMATION IS SUBMITTED, SUBJECT TO ERRORS, OMISSIONS OR CHANGES IN CONDITION PRIOR TO SALE, LEASE OR WITHDRAWAL WITHOUT NOTICE. ALL INFORMATION CONTAINED HEREIN SHOULD BE VERIFIED.

# 7219 W. Sahara Ave. Ste. 120

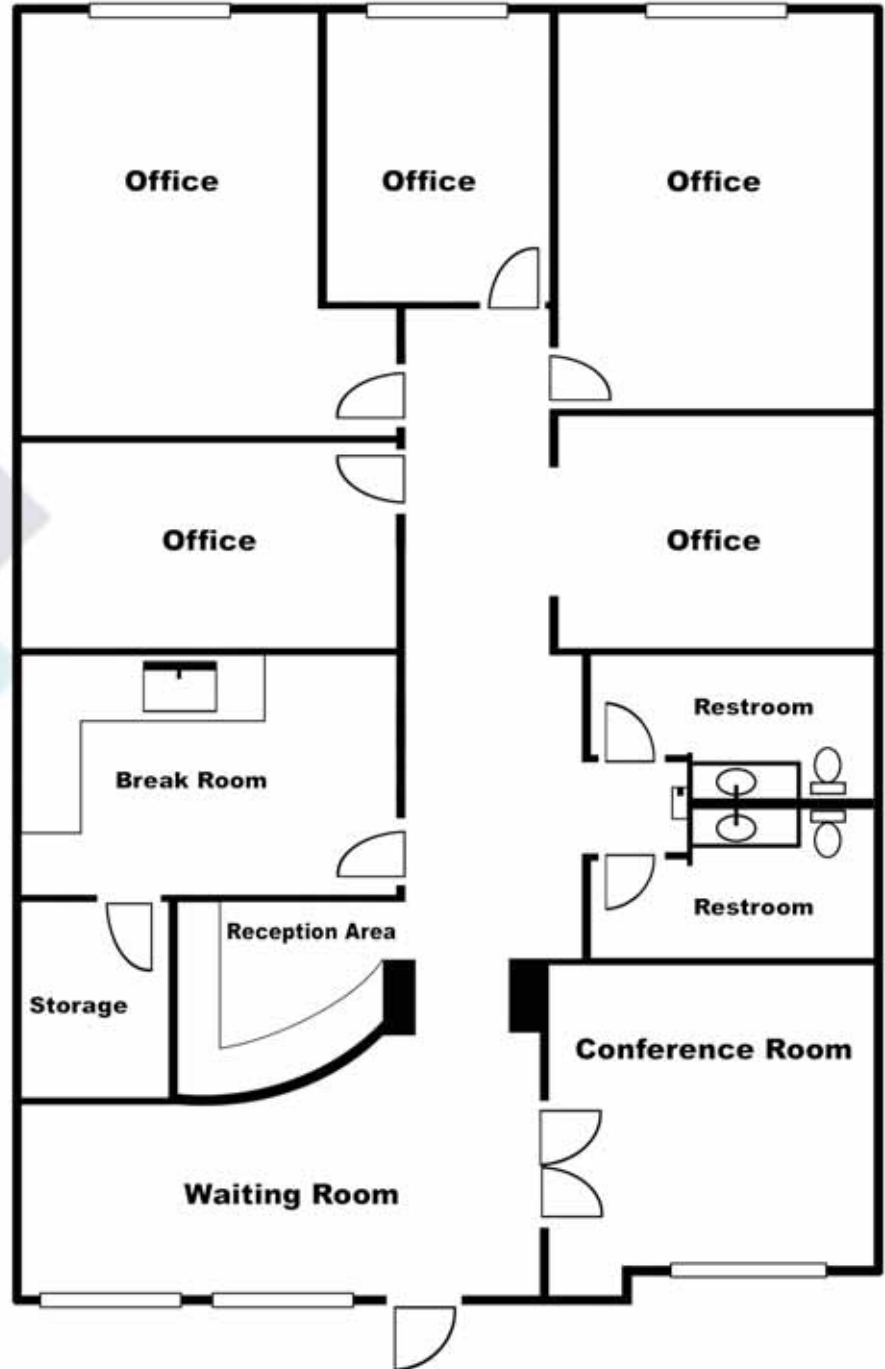
LAS VEGAS, NEVADA 89117

## OFFICE SPACE FOR LEASE

2,500 Sq. Ft. Office  
\$1.30 NNN (\$3250.00)  
\$0.35 CAMS (\$875.00)  
Total (\$4125.00)

- ◆ 5 Offices
- ◆ Conference Room
- ◆ Reception Area
- ◆ Waiting Room
- ◆ Storage Room
- ◆ Break Room
- ◆ 2 Restrooms
- ◆ Drinking Fountain

Located west of Rainbow at  
Tenaya Way. Centrally located,  
minutes to Summerlin,  
Las Vegas Strip and US-95.



**PRIORITY ONE COMMERCIAL**  
REAL ESTATE BROKERAGE

7259 W. SAHARA AVE. STE. 110  
LAS VEGAS, NV. 89117

[WWW.PRIORITYONECOMMERCIAL.COM](http://WWW.PRIORITYONECOMMERCIAL.COM)

**CYNTHIA A. INMAN**  
Owner/Corporate Broker  
Certified Property Manager  
702.228.7464  
[cinman@poclvr.com](mailto:cinman@poclvr.com)

THE INFORMATION CONTAINED HEREIN WAS OBTAINED BY SOURCES WE BELIEVE TO BE RELIABLE, HOWEVER, NO WARRANTY OR GUARANTEE EITHER EXPRESSED OR IMPLIED IS MADE TO ACCURACY HEREOF. ALL SUCH INFORMATION IS SUBMITTED, SUBJECT TO ERRORS, OMISSIONS OR CHANGES IN CONDITION PRIOR TO SALE, LEASE OR WITHDRAWAL WITHOUT NOTICE. ALL INFORMATION CONTAINED HEREIN SHOULD BE VERIFIED.