

# DUNWOODY PLACE

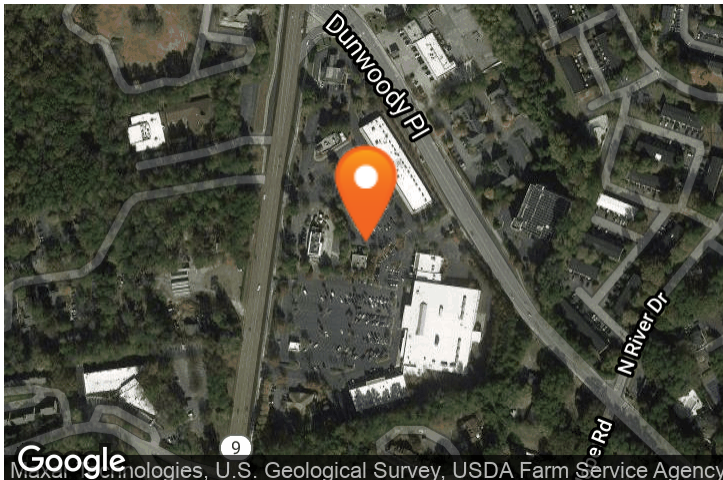
8725 Roswell Road, Dunwoody, GA 30350

## EXECUTIVE SUMMARY



### LOCATION OVERVIEW

Neighborhood shopping center serving Sandy Springs with convenient access to GA 400



### PROPERTY HIGHLIGHTS

- Available Inline: 1,050-2,530 SF
- Available Endcap: 4,200 SF
- 3 significant pylon signs
- CO-TENANTS: Publix, Starbucks, AT&T, Wells Fargo, GNC, Wingstop, Papa John's, McDonald's & Arby's
- GLA: 102,367 SF
- GA DOT Traffic Counts: Roswell Road - 34,100 AADT & Dunwoody Place - 19,300 AADT

### DEMOGRAPHICS

|                               | 1 MILE | 3 MILES | 5 MILES |
|-------------------------------|--------|---------|---------|
| Population                    | 13,745 | 80,905  | 213,587 |
| Daytime Population            | 14,929 | 68,407  | 256,741 |
| Average Household Income (\$) | 80,130 | 111,751 | 127,659 |

### EXCLUSIVE AGENT(S)

BRETT FULLER • [brett.fuller@tscg.com](mailto:brett.fuller@tscg.com) • 770.955.2434





# DUNWOODY PLACE

8725 Roswell Road, Dunwoody, GA 30350

## ADDITIONAL PHOTOS



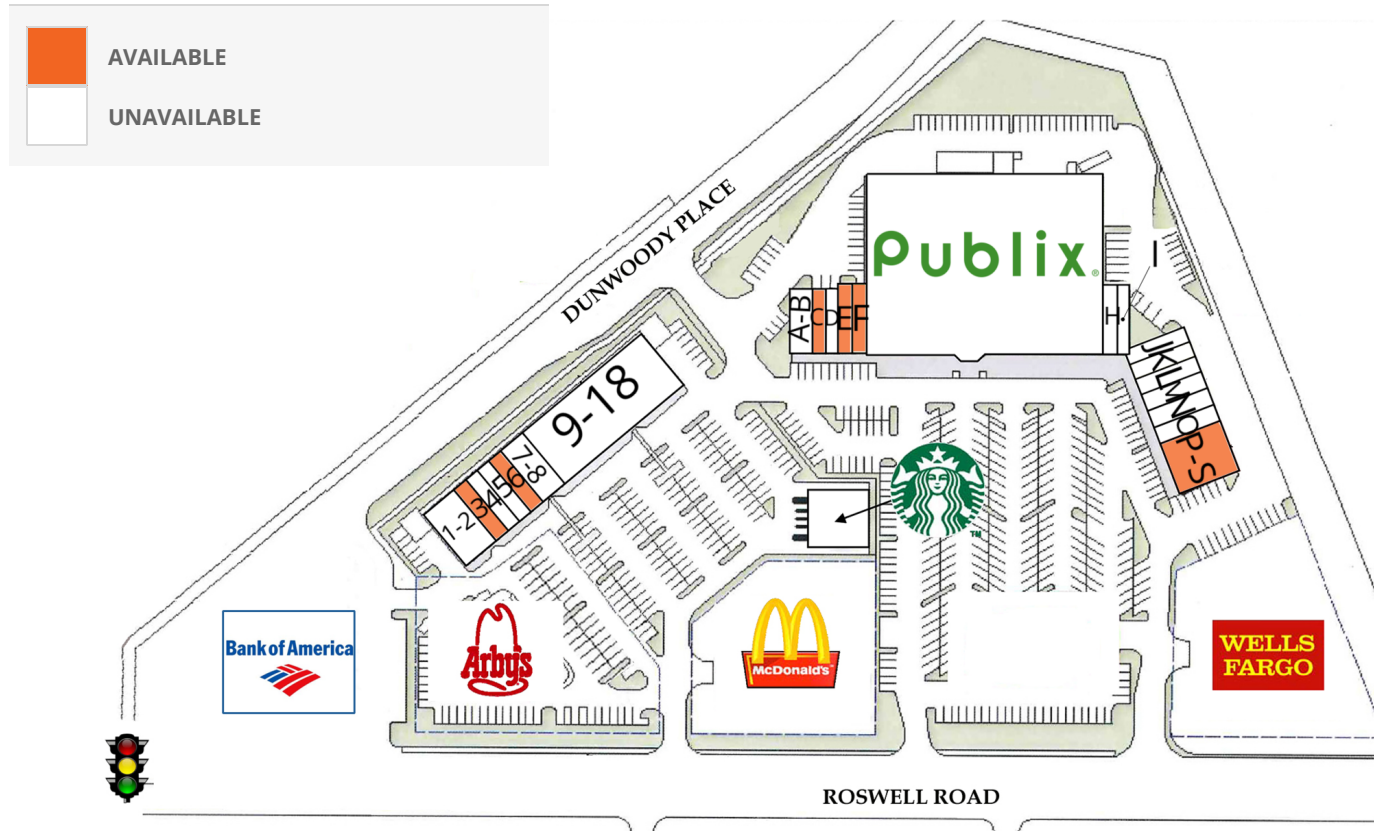
### EXCLUSIVE AGENT(S)

BRETT FULLER • [brett.fuller@tscg.com](mailto:brett.fuller@tscg.com) • 770.955.2434

# DUNWOODY PLACE

8725 Roswell Road, Dunwoody, GA 30350

## SITE PLAN



| SUITE | TENANT NAME              | SPACE SIZE | SUITE | TENANT NAME    | SPACE SIZE | SUITE | TENANT NAME        | SPACE SIZE |
|-------|--------------------------|------------|-------|----------------|------------|-------|--------------------|------------|
| 1-2   | Mediterranean Restaurant | 3,120 SF   | A-B   | Dry Cleaners   | 1,960 SF   | J     | Chinese Restaurant | 1,400 SF   |
| 3     | Available                | 1,078 SF   | C     | Available      | 1,050 SF   | K     | Beauty Supply      | 1,400 SF   |
| 4     | Papa John's Pizza        | 1,400 SF   | D     | Metro PCS      | 1,040 SF   | L     | Diesel Barber      | 1,400 SF   |
| 5     | Money Market             | 1,050 SF   | E     | Available      | 1,360 SF   | M     | Wing Stop          | 1,400 SF   |
| 6     | Available                | 1,050 SF   | F     | Available      | 1,170 SF   | N     | Nail Salon         | 1,400 SF   |
| 7-8   | Circle Sushi             | 2,520 SF   | H     | GNC            | 1,050 SF   | O     | Pak Mail           | 1,400 SF   |
| 9-18  | You Fit                  | 12,320 SF  | I     | K9 Cosmetology | 1,050 SF   | P-S   | Available          | 4,200 SF   |
| 19    | Starbucks                | 1,800 SF   |       |                |            |       |                    |            |

### EXCLUSIVE AGENT(S)

BRETT FULLER • [brett.fuller@tscg.com](mailto:brett.fuller@tscg.com) • 770.955.2434

