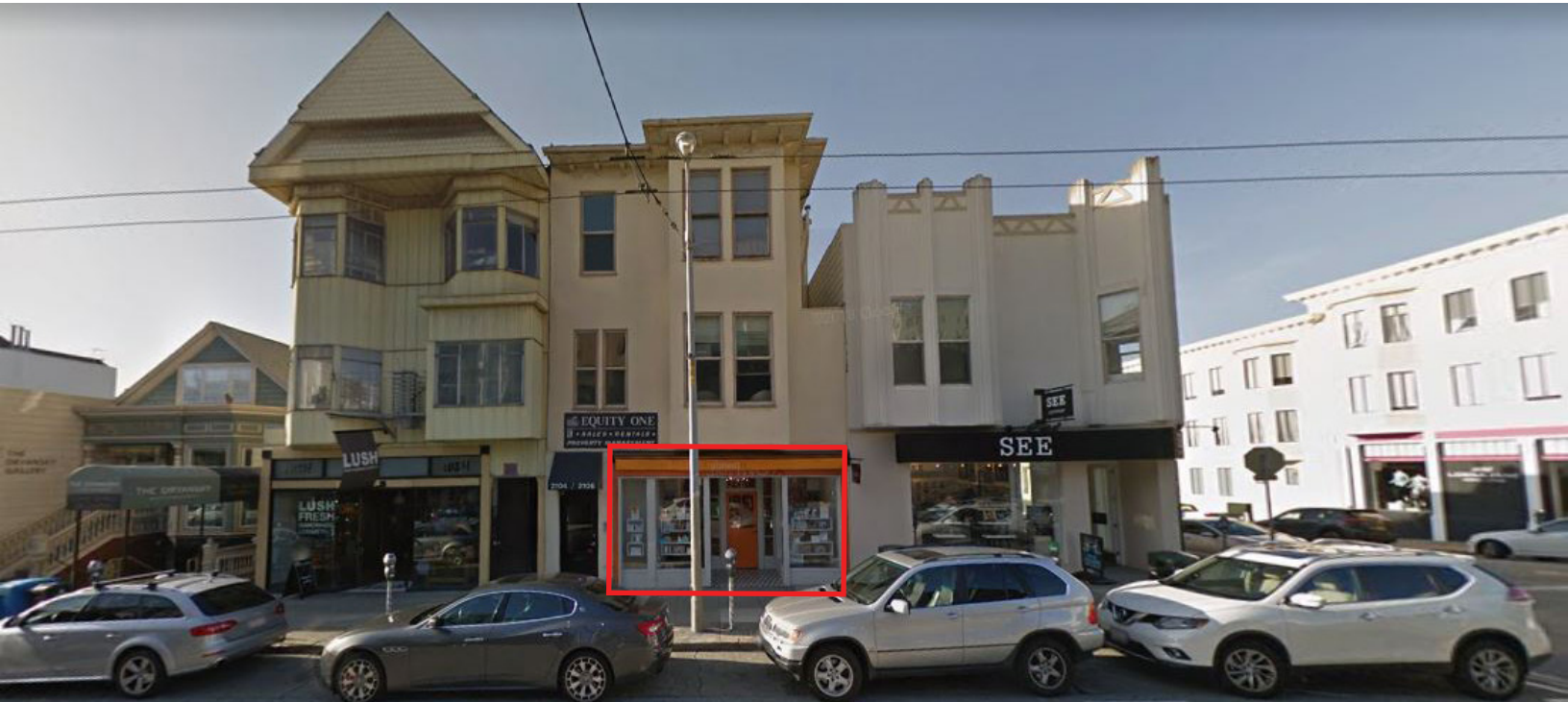


# QUAINT RETAIL SPACE FOR LEASE ON BEST BLOCK OF UNION STREET!

## 2102 UNION STREET, SAN FRANCISCO, CA 94123



**VIRTUAL TOUR AVAILABLE! CLICK HERE!**

**PLEASE CALL FOR PRICE**

**COW HOLLOW DISTRICT**

BETWEEN WEBSTER & FILLMORE STREETS

SIZE:

**±1,000 SF**

RETAIL SPACE FOR LEASE

**AVAILABLE NOW**

**Well-located boutique on Union Street** comes with hardwood floors, excellent signage opportunities, and a terrific window lining.

**High foot traffic area** with nearby tenants including ANOMIE, The Brixton, Lorna Jane, LUSH, See Eyewear, Soulcycle, and more make-up this flourishing neighborhood.



INCORPORATED | EST. 1922

**JONATHAN BLATTEIS**

415.321.7486 | [jb@brsf.co](mailto:jb@brsf.co) | DRE #00812015

**[sfretail.net](http://sfretail.net)**

This Statement with the information it contains is given with the understanding that all negotiations relating to the purchase, renting or leasing of the property described above shall be conducted through Blatteis Realty Company. The above information, while not guaranteed, has been secured from sources believed to be reliable. Blatteis Realty has not verified its accuracy and make no guarantees, warranty or representation regarding this information and it is published subject to the possibility of errors, omissions, changes of listing information including price, term, financing, or withdrawal without notice. We include projections, estimates, opinions and/or assumptions, for example only, and they may not represent current or future performance of the property. You should consult your tax and legal advisors before to verify the validity of estimates. All commercial or mixed-use property presented by Blatteis Realty is subject to local zoning codes and regulations. It is the sole responsibility and liability of tenants and property owners to obtain all applicable required building permits and/or certificates from the local city/town Planning Department before commercial property use can commence or a building can be built.

44 Montgomery Suite 1288, San Francisco, CA 94104 | t: 415.981.2844 | f: 415.981.4986 | [info@brsf.co](mailto:info@brsf.co) | DRE #01421282

## INTERIOR



INCORPORATED | EST. 1922

This Statement with the information it contains is given with the understanding that all negotiations relating to the purchase, renting or leasing of the property described above shall be conducted through Blatteis Realty Company. The above information, while not guaranteed, has been secured from sources believed to be reliable. Blatteis Realty has not verified its accuracy and make no guarantees, warranty or representation regarding this information and it is published subject to the possibility of errors, omissions, changes of listing information including price, term, financing, or withdrawal without notice. We include projections, estimates, opinions and/or assumptions, for example only, and they may not represent current or future performance of the property. You should consult your tax and legal advisors before to verify the validity of estimates. All commercial or mixed-use property presented by Blatteis Realty is subject to local zoning codes and regulations. It is the sole responsibility and liability of tenants and property owners to obtain all applicable required building permits and/or certificates from the local city/town Planning Department before commercial property use can commence or a building can be built.

**JONATHAN BLATTEIS**

415.321.7486 | [jb@brsf.co](mailto:jb@brsf.co) | DRE #00812015

**sfretail.net**

## INTERIOR



INCORPORATED | EST. 1922

This Statement with the information it contains is given with the understanding that all negotiations relating to the purchase, renting or leasing of the property described above shall be conducted through Blatteis Realty Company. The above information, while not guaranteed, has been secured from sources believed to be reliable. Blatteis Realty has not verified its accuracy and make no guarantees, warranty or representation regarding this information and it is published subject to the possibility of errors, omissions, changes of listing information including price, term, financing, or withdrawal without notice. We include projections, estimates, opinions and/or assumptions, for example only, and they may not represent current or future performance of the property. You should consult your tax and legal advisors before to verify the validity of estimates. All commercial or mixed-use property presented by Blatteis Realty is subject to local zoning codes and regulations. It is the sole responsibility and liability of tenants and property owners to obtain all applicable required building permits and/or certificates from the local city/town Planning Department before commercial property use can commence or a building can be built.

**JONATHAN BLATTEIS**

415.321.7486 | [jb@brsf.co](mailto:jb@brsf.co) | DRE #00812015

[sfretail.net](http://sfretail.net)

# UNION STREET TENANT MAP

GOUGH TO STEINER

## OCTAVIA STREET

California Weight Clinic	1700
Available Retail Space for Lease	1714
Union French Cleaners	1718
Available Retail Space for Lease	1728
Dermaplus Skin + Body	
Current Clothing	1738
Dermal Essentials	
Urban Green Investments	1746
Moulin Pooch	1750
Strip Wax Bar	1764
Pink Bunny	1772
Chic Nails Salon	
Retail Space for Lease	1782
Dantone Boutique	1784
Retail Space for Lease	1796
GetzWell Pediatrics	1800
Organic Shimmer	1804
SF Color Collective	1808
Bare	1810
Available Retail Space for Lease	1814
Available Salon Space for Lease	1816
Tonal Gym	1824
Sprout	1828
Caffe Union	1830
Available Retail Space for Lease	1832
KAIYO	1838
+Topdrawer	1840
G Grover Interiors	1844
O'Dette Mortgage Group	1842
Morning Lavender	1846
Nanskin, Limited Watches, Inc., Various Office Spaces	1850
Ambiance	1858
Shannon Leahy Events	1862
Kryolan City San Francisco	1864
Retail Space	1870
UNTUCKIT	1872
Laser Away	1878
Available Retail Space for Lease	1882
Available Retail Space for Lease	1888
Yoga Flow SF	1892
Neomodern	1898

1715	Pane e Vino Trattoria
1725	Crunch Fitness
1735	CryoSF
1737	City Living SF
1739	TC Jewelers
	Retail Space for Lease
1745	VW Nail Care
1747	Cow Hollow Shoe Repair
1749	Chez Berlue
1757	Salon Macias, Red Union Salon
1763	Marina Dental Care
1771	ML Hair Studio
1775	The Lotus Method
1785	Roam Artisan Burgers
1787	Available Restaurant Space
1793	Veo Optics

## LAGUNA STREET

Wells Fargo Bank	1900
Karma Yoga	1906
Public Parking	1910
Birdies	1934
Available Office Space for Lease	1936
Available Retail Office Space for Lease	1942
Perry's	1944
State Farm Insurance	1952
Lashfully, The Caviar Co.,	1954
Various Medical Offices	1956
Adore Born to Love Shoes	1958
Bonobos	1964
The North Face	1974
Available Retail Space for Lease	1980
Available Salon/Office Space for Lease	
Extreme Pizza, The Stylist SF	
Solstice and Available Bar Space	
Juice Shop	1994
Arthur Sebastian Hair Salon, Brown Sugar Boutique	1996
Gio Gelati	1998

1801	Fenzi Uomo
1803	B&A Estate
1809	Capannina
1815	Acorn Home Furnishings & Design
1823	One Medical
1825	SKIN Medical Spa
1827	Winnie Couture
1829	LA Paul & Associates, BACK OF THE HOUSE, Inc.
1831	Available Retail Space Upstairs for Lease
1833	Carats & Stones, KTD Fine Jewelers
1837	Candid Studio
1843	Available Retail Space for Lease
1849	Tamashisoul Sushi Bar
1851	Available Bar Space for Lease
1861	Available Retail Space for Lease
1869	Jest Jewels (Available Retail Space for Lease)
1875	Hollow Cow (Available Restaurant For Lease)
1877	Drip Doctors (Medical Spa)
1887	Sunglass Hut
1889	Berenice Hair Salon, Thermal Reconditioning SF
1895	doob 3D
1899	Starbucks



## BUCHANAN STREET

Wildseed	2000
Marcello Watches, The Barber Shop	2030
Palm House, Union Street Shoe Repair	2032
Impact Builders, LLC	2034
Images of the North	2036
Milvali Salon, Rosewater Skin Care	2040
Titika Active Couture	2042
The Naked Market, G T Financial Group	2044
Retail Space for Lease, Cucalon Orthodontics	2060
Various Chiropractic Offices	2064
Le Marcel Bakery	2066
Available Retail Space for Lease	2068
Vuori	2070
Titika Active Couture	2072
Modern Citizen	2078
Evolve Therapy	2082
Sweaty Betty	2086
Various Retail Spaces	2088
Lorna Jane	2090

1901	Bus Stop Saloon
1905	Oxygen Massage, Flourish Skin and Wax
1907	Available Retail Space for Lease
1909	Epicurean Trader
1909	La Boulangerie
1919	Italian Homemade Co.
1929	Office Space for Lease
1931	Union Street Jewelers,
1933	Zen Beauty Spa, Jinza Couture
1943	Dreamy Angels
1945	B Brow Lounge
1947	HELPER'S Artisan Bazaar
1949	
1951	Closet 1951
1957	Urban Remedy
1969	Dahlia, High Society, Golden Lotus
1977	Vegan Picnic, Eleven Eleven
1979	The Blue Light
1981	Lululemon Athletica
1995	Bank of America

LA BOULANGERIE  
- SAN FRANCISCO -



## WEBSTER STREET

**2102 UNION STREET**

See Eyewear	2100
Available Retail Space for Lease	2102
Practic SF Yoga	2104
Equity One	2106
Lush	2116
Anchor Mediation	2118
Available Retail Space for Lease	2120
Hint, Inc., Reid's Tailoring, Marla Dell Talent	2124
Available Restaurant Space for Lease	2136
Brixton	2140
Available Retail Space for Lease	2150
Available Retail Space for Lease	2154
Verizon, Pressed Juicery	2162
Union Street Papery	2166
Alana Leigh Designs	
Casper Mattress	2174
Little Gem	2184
Available Retail Space for Lease	2190
Michael's Wine & Spirits	2198

2001	Union Street Plaza & Garage
	Comerica Bank, Firuze
	Shaw Shoes, Hunan Empire
	ARTEMIA Communications Inc
2001	Various Commercial and Medical Offices
2031	Upscale Construction
	Folio Avenue Publishing Service
	Bien-Etre Beaute, Mina's Tailor Studio,
	Greenforce Clean Team, Luxe Premier Travel
	Available Restaurant Space for Lease
2033	Lama's Boutique
2035	Equinox, illy Caffè, Earthbar
2055	Kühl
2071	Sephora
2083	Serenity Wellness Spa
2087	Soul Cycle
2095	

EQUINOX  
SEPHORA  
SOULCYCLE

## FILLMORE STREET

Prudential California Realty, The Bud Stop	2200
Law Offices	2204
1887 Dance Shop	2206
Allstate Insurance	2208
Sur La Table	2224
Available Retail Space for Lease	2238
Wanderlust Salon, Bella Bridesmaid,	2250
Jutta Reichart Associates, Union Street Dental Care	
Available Retail Space for Lease	2254
Available Retail Space for Lease, Lovely Bride	2266
Lili Henry - Personal Fashion Stylist	2272
Available Retail Space for Lease	2274
2nd Floor Office Space for Lease	2276
Danielle	2278
Legal Offices	2280
Various Clinical Offices	2282
Bamboo Nail Salon	2284
Great Tan	2286
eSalon	2288
Jenkins Garage Door Repair	2292
Rose's Cafe	2298

2101	Adair Design Group
2103	Retail Space for Lease
2107	Compass
2113	Lash and Lab
2115	Joy Joy Nail
2117	Motion Wireless & Gifts
2127	ialis, Available Retail Space for Lease
2133	Available Retail Space for Lease
2135	AT&T Store
2147	Nail Today, Sui Generis Consignment
2149	Anomie, ATYS Contemporary Living
2157	Jo Malone
2159	Available Retail Space for Lease
2161	Vera Weiler Electrolysis
2163	Available Retail Space for Lease
2165	West Coast Wine & Cheese, Gunilla Skin Butik
2167	STYLEDASH Beauty Lounge
2181	Juicy News, The Sill
2185	Cameron James Salon
2187	Available Retail Space for Lease
2189	Eyes in Disguise
2191	Union Street Coffee Roastery

# A TOP SAN FRANCISCO LOCAL & TOURIST DESTINATION FOR SHOPPING, DINING AND ENTERTAINMENT!



EQUINOX



SEPHORA



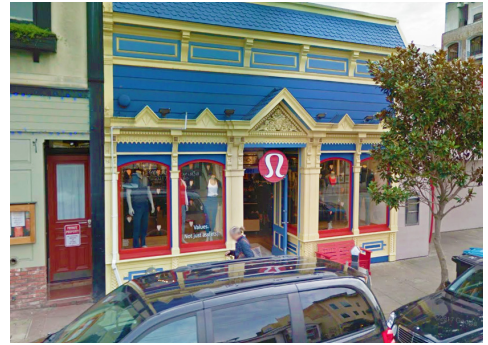
SOULCYCLE



SWEATY BETTY



THE NORTH FACE



LULULEMON



PERRY'S



LORNA JANE



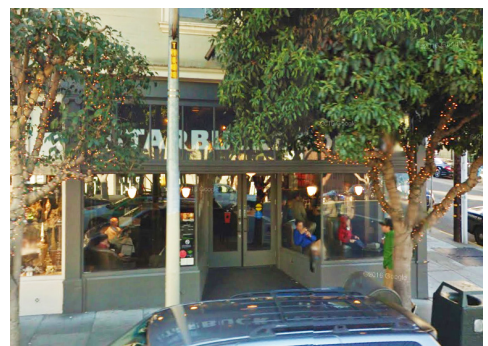
VUORI



WELLS FARGO



WILDSEED



STARBUCKS



INCORPORATED | EST. 1922

**JONATHAN BLATTEIS**

415.321.7486 | [jb@brsf.co](mailto:jb@brsf.co) | DRE #00812015

**[sfretail.net](http://sfretail.net)**

This Statement with the information it contains is given with the understanding that all negotiations relating to the purchase, renting or leasing of the property described above shall be conducted through Blatteis Realty Company. The above information, while not guaranteed, has been secured from sources believed to be reliable. Blatteis Realty has not verified its accuracy and make no guarantees, warranty or representation regarding this information and it is published subject to the possibility of errors, omissions, changes of listing information including price, term, financing, or withdrawal without notice. We include projections, estimates, opinions and/or assumptions, for example only, and they may not represent current or future performance of the property. You should consult your tax and legal advisors before to verify the validity of estimates. All commercial or mixed-use property presented by Blatteis Realty is subject to local zoning codes and regulations. It is the sole responsibility and liability of tenants and property owners to obtain all applicable required building permits and/or certificates from the local city/town Planning Department before commercial property use can commence or a building can be built.