

# 135 OAK ST

BONNER SPRINGS, KS 66012



## REECE

COMMERCIAL REAL ESTATE

a Berkshire Hathaway Affiliate



## HIGHLIGHTS

- Downtown Bonner Springs Office Building
- Convenient Location
- 400-2,911 SF Spaces Available
- Individual Offices
- Office Suites Available
- Storage Available

**FOR LEASE**

**\$15.00/SF**

## DEMOGRAPHICS

	1 Mile	3 Mile	5 Mile
2019 AVG HOUSEHOLD INCOME	\$53,410	\$108,074	\$106,471

### Matt Watkins

Office: 913-266-5424  
Mobile: 913-908-9447  
Main Office: 913.652.4300  
Email: [matt@reececommercial.com](mailto:matt@reececommercial.com)

The information above has been obtained from sources believed reliable. While we do not doubt its accuracy we have not verified it and make no guarantee, warranty or representation about it. It is your responsibility to independently confirm its accuracy and completeness. Any projections, opinions, assumptions, or estimates used are for example only and do not represent the current or future performance of the property. You and your advisors should conduct a careful, independent investigation of the property to determine to your satisfaction the suitability of the property for your needs.

© 2019



# PHOTOS

135 OAK ST, BONNER SPRINGS, KS 66012



## REECE

COMMERCIAL REAL ESTATE

a Berkshire Hathaway Affiliate



### **Matt Watkins**

Office: 913-266-5424  
Mobile: 913-908-9447  
Main Office: 913.652.4300  
Email: [matt@reececommercial.com](mailto:matt@reececommercial.com)

The information above has been obtained from sources believed reliable. While we do not doubt its accuracy we have not verified it and make no guarantee, warranty or representation about it. It is your responsibility to independently confirm its accuracy and completeness. Any projections, opinions, assumptions, or estimates used are for example only and do not represent the current or future performance of the property. You and your advisors should conduct a careful, independent investigation of the property to determine to your satisfaction the suitability of the property for your needs.

© 2019

# FLOOR PLANS

135 OAK ST, BONNER SPRINGS, KS 66012



# REECE

COMMERCIAL REAL ESTATE

a Berkshire Hathaway Affiliate

## RENTAL OPTIONS

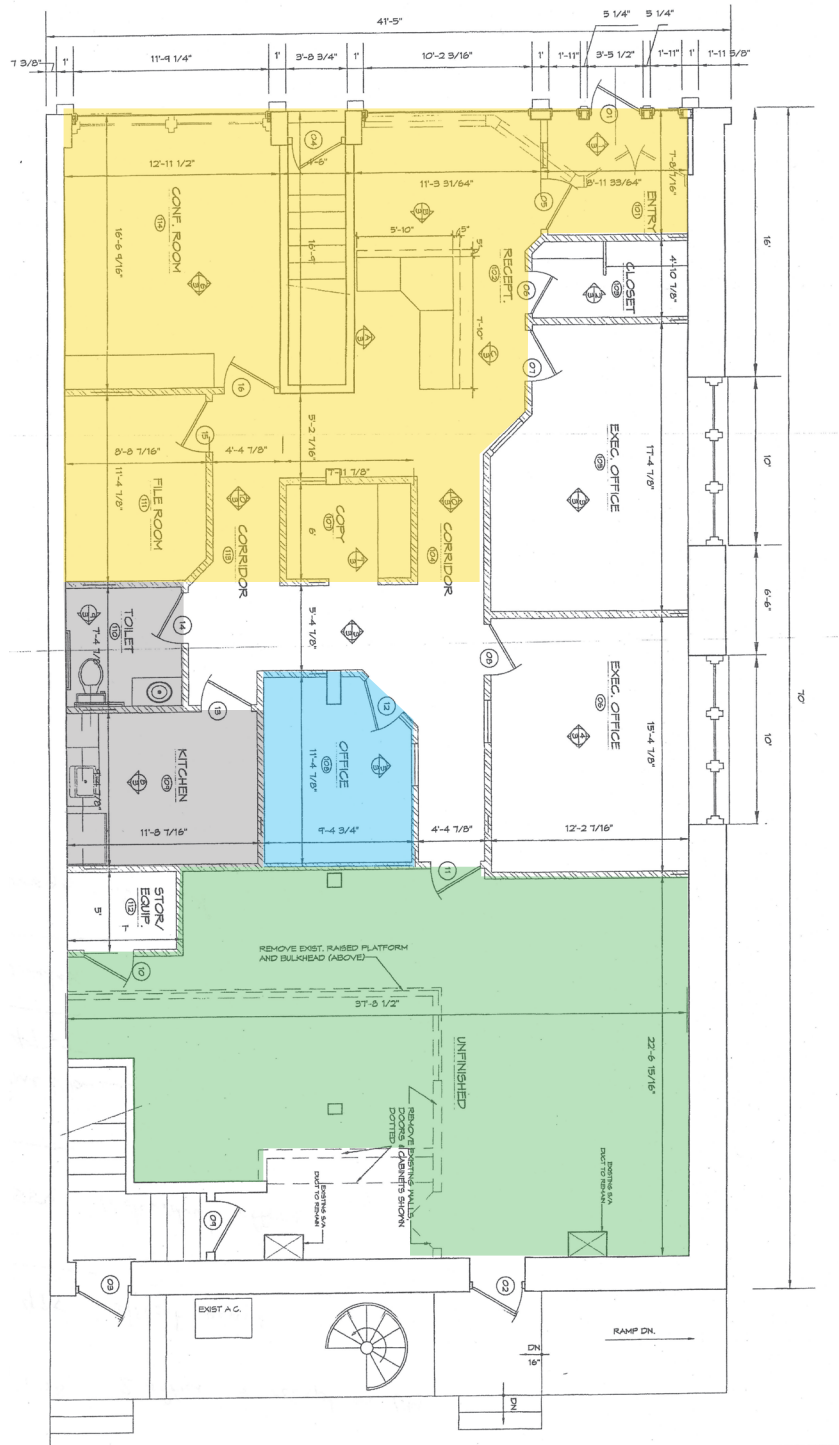
**Yellow** - Reception & 2 offices  
Access to Copy Room & Kitchen  
\$1050 per month

**Blue** - One office  
Access to Copy Room & Kitchen  
\$400 per month

**Green** - Open Work Space  
Access to Copy Room & Kitchen  
\$1,400/month

**Gray** - Shared Toilet & Kitchen

Access to Wireless system along with individual internet connections



**Matt Watkins**

Office: 913-266-5424  
Mobile: 913-908-9447  
Main Office: 913.652.4300  
Email: matt@reececommercial.com

The information above has been obtained from sources believed reliable. While we do not doubt its accuracy we have not verified it and make no guarantee, warranty or representation about it. It is your responsibility to independently confirm its accuracy and completeness. Any projections, opinions, assumptions, or estimates used are for example only and do not represent the current or future performance of the property. You and your advisors should conduct a careful, independent investigation of the property to determine to your satisfaction the suitability of the property for your needs.

© 2019



# AERIALS

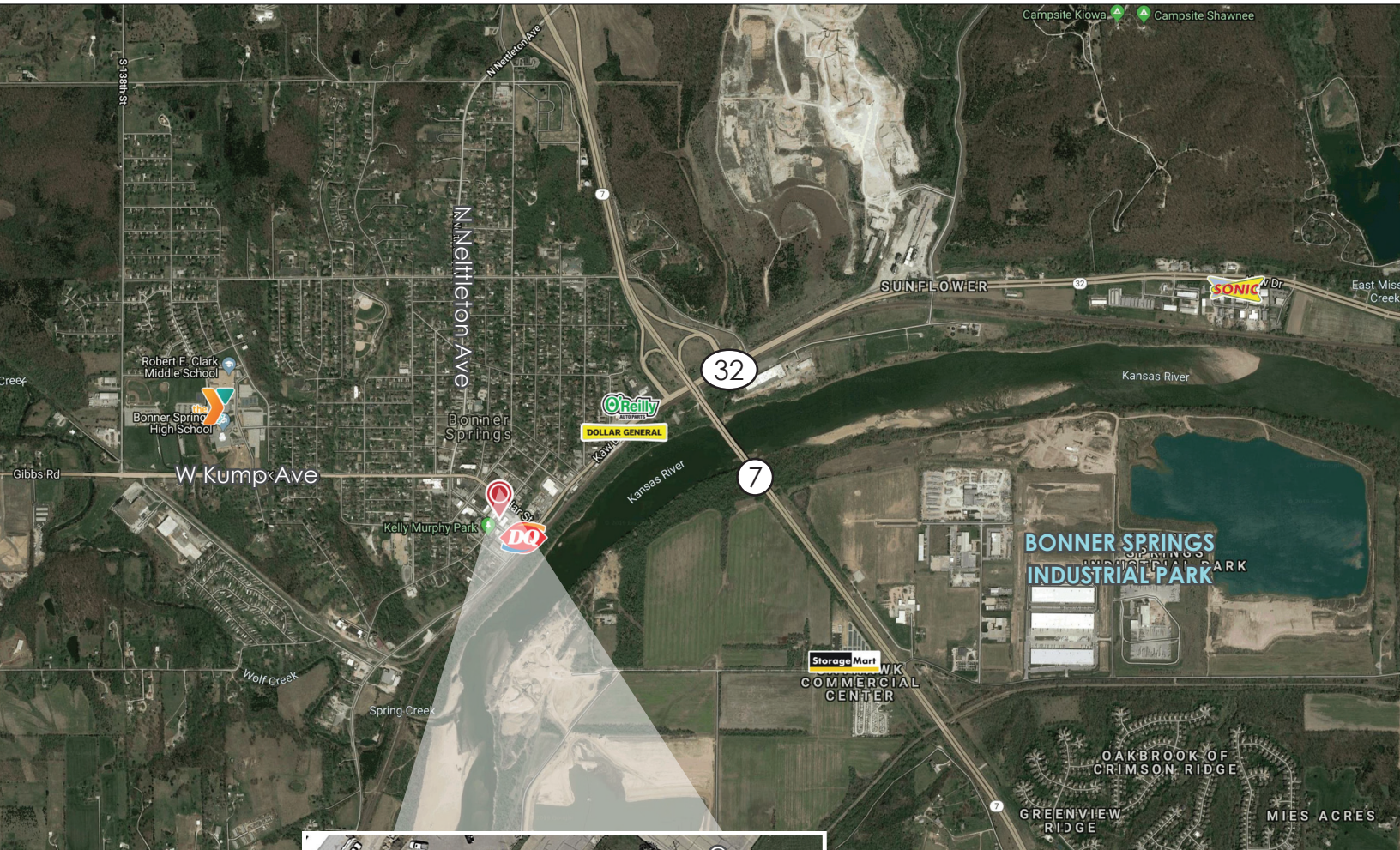
135 OAK ST, BONNER SPRINGS, KS 66012



# REECE

COMMERCIAL REAL ESTATE

a Berkshire Hathaway Affiliate



## Matt Watkins

Office: 913-266-5424  
Mobile: 913-908-9447  
Main Office: 913.652.4300  
Email: [matt@reececommercial.com](mailto:matt@reececommercial.com)

The information above has been obtained from sources believed reliable. While we do not doubt its accuracy we have not verified it and make no guarantee, warranty or representation about it. It is your responsibility to independently confirm its accuracy and completeness. Any projections, opinions, assumptions, or estimates used are for example only and do not represent the current or future performance of the property. You and your advisors should conduct a careful, independent investigation of the property to determine to your satisfaction the suitability of the property for your needs.

© 2019