

South Lakes Office Park

9222-24-26 South Elwood, Jenks, OK 74037



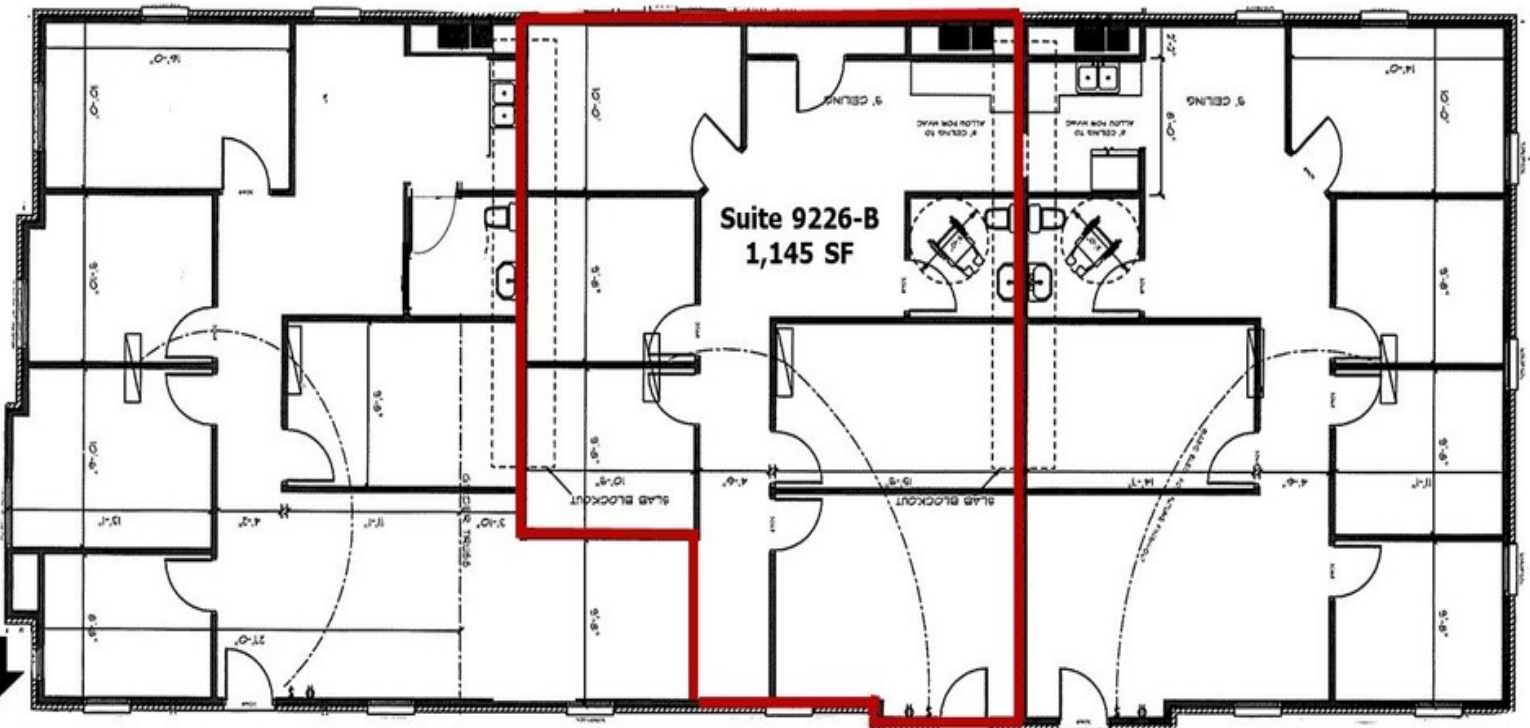
FOR LEASE

Available SF, Suite 9226-B:	1,145 SF
Rent Rate:	\$17.00/SF/YR
Lease Type:	Full Service (Less Janitorial)
Building Size:	11,250 SF
Parking:	Curbside

PROPERTY OVERVIEW

- * Garden Office Building with private entrances.
- * Suites feature crown molding and wood baseboards.
- * Exterior building signage.
- * Monument street signage available.
- * Located in Jenks across from South Lakes Golf Course.
- * Easy access to Highway 75 and Jones Riverside Airport.

TANDA FRANCIS
918.394.1000
tfrancis@pricedwards.com
pricedwards.com



TANDA FRANCIS
918.394.1000
tfrancis@priceedwards.com
priceedwards.com