

LOGAN
COMMERCE CENTER

1700
MARKLEY
STREET
NORRISTOWN
PENNSYLVANIA



OFFICE: \$19.50 gross + utilities
WAREHOUSE/LAB/FLEX: \$13.50 NNN

NEWMARK

LEED CERTIFIED BUILDING
AVAILABLE FOR LEASE
OFFICE/WAREHOUSE/LAB

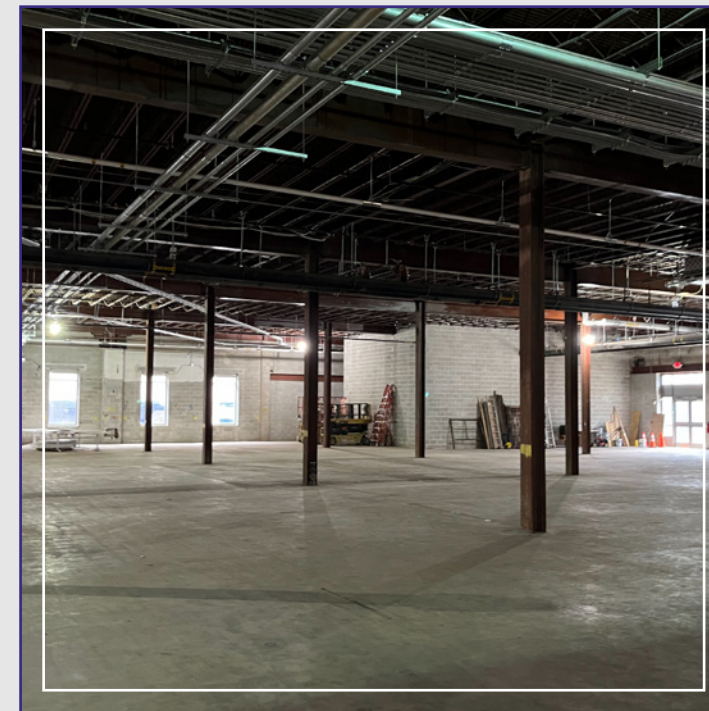
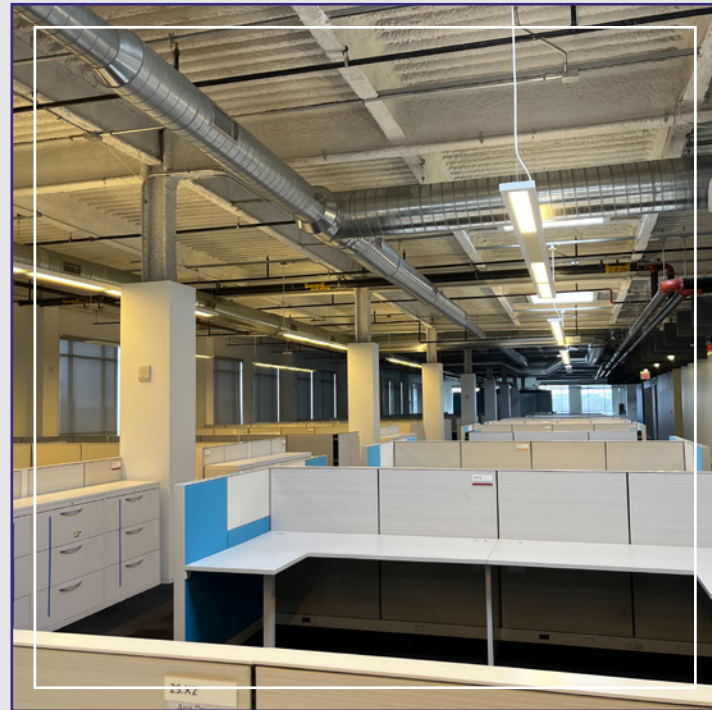
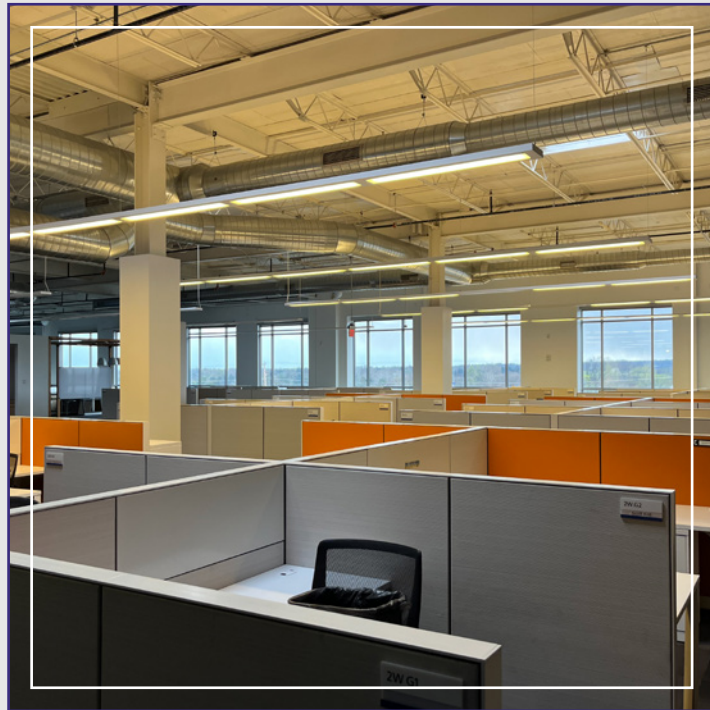
P Pitcairn
PROPERTIES



OFFICE/LAB/WAREHOUSE FUNCTIONALITY

Up to 62,532 SF
18'6" Ceiling Heights

4 Loading Docks
25' Column Spacing



WALKABLE AMENITIES
ROYAL FARMS, DUNKIN'
& EL PRIMO (COMING SOON)



MULTIPLE SIGNAGE OPPORTUNITIES



PROXIMITY TO I-476/I-76

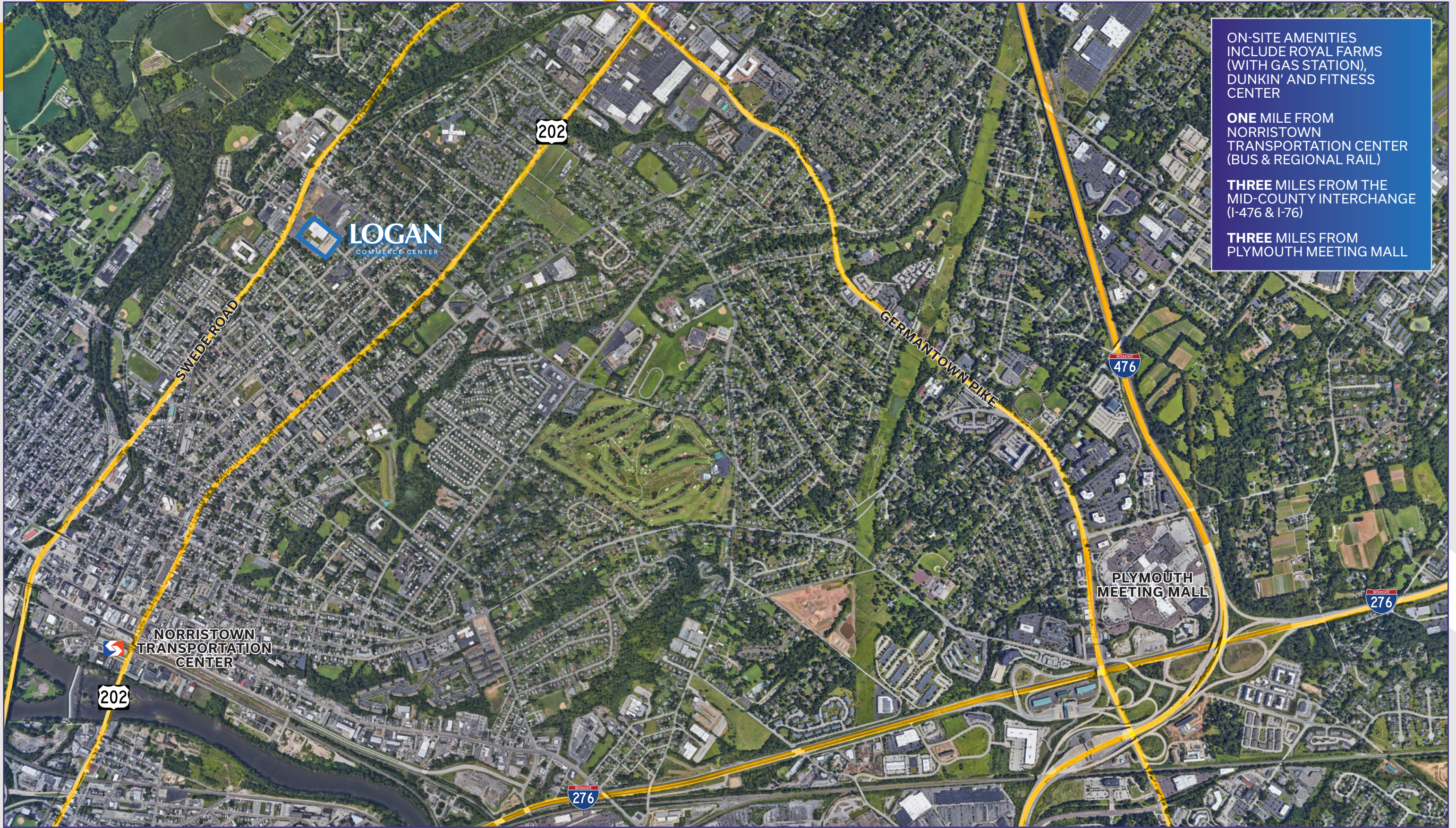
COVERED PARKING GARAGE
5.00/1,000 SF



LEED CERTIFIED



HIGH, EXPOSED CEILINGS THROUGHOUT



ON-SITE AMENITIES
INCLUDE ROYAL FARMS
(WITH GAS STATION),
DUNKIN' AND FITNESS
CENTER

ONE MILE FROM
NORRISTOWN
TRANSPORTATION CENTER
(BUS & REGIONAL RAIL)

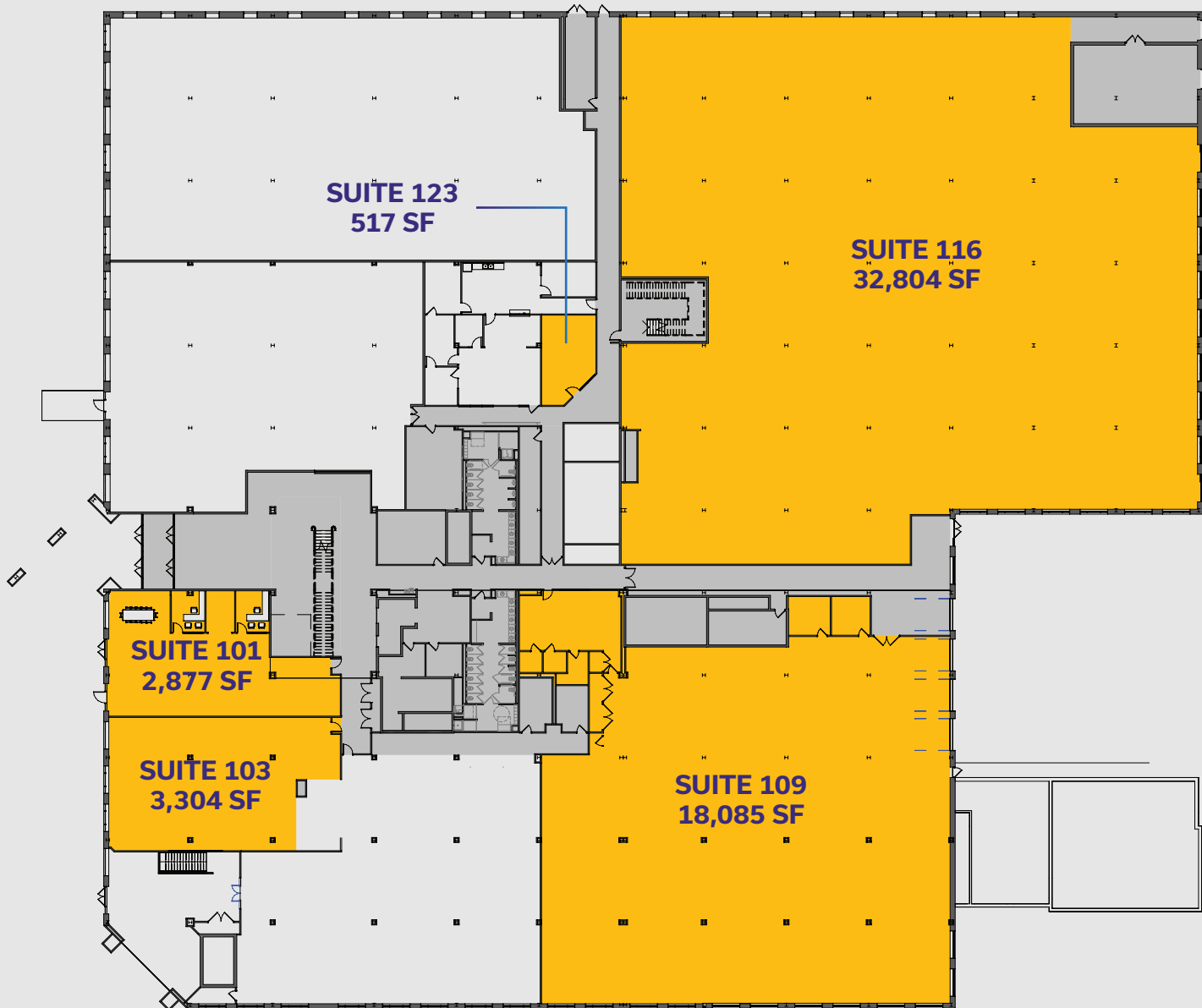
THREE MILES FROM THE
MID-COUNTY INTERCHANGE
(I-476 & I-76)

THREE MILES FROM
PLYMOUTH MEETING MALL

1st

FLOOR AVAILABILITIES

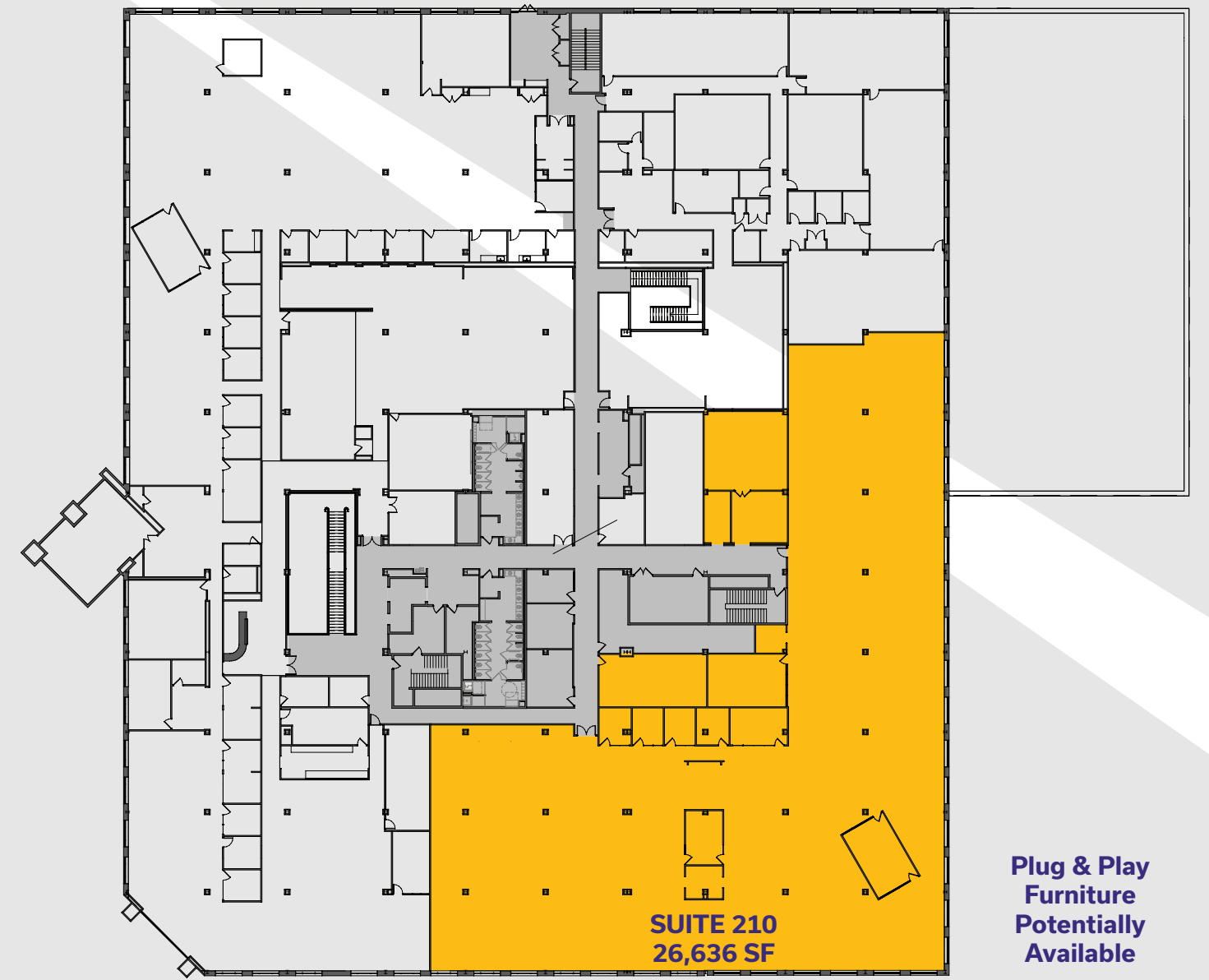
Warehouse/Office/Lab (Divisible)



2nd

FLOOR AVAILABILITIES

Office/Lab (Divisible)



Plug & Play
Furniture
Potentially
Available



JAMES MULLARKEY
Executive Managing Director
(215) 320-4521
james.mullarkey@nrmk.com

MITCH RUSSELL
Associate Director
(610) 879-4514
mitch.russell@nrmk.com

610 Freedom Business Center Drive, Suite 310
King of Prussia, PA 19406
(610) 265-0600
nrmk.com

NEWMARK

Licensed in Pennsylvania as Newmark Real Estate

The information contained herein has been obtained from sources deemed reliable but has not been verified and no guarantee, warranty or representation, either express or implied, is made with respect to such information. Terms of sale or lease and availability are subject to change or withdrawal without notice.