

FOR LEASE

511 WEST ST, OCEANSIDE, CA

LEE & ASSOCIATES
COMMERCIAL REAL ESTATE SERVICES

**MAJOR PRICE
REDUCTION!**

**SUBJECT
PROPERTY**

250 PERSON SEATING CAPACITY RELIGIOUS FACILITY AVAILABLE

PROPERTY DETAILS:

- 8,025 SF freestanding church facility on a larger paved lot
- Additional 2,518 SF freestanding building used for day-care facility.
- Current tenant has utilized the property for their church & day-care facility
- Existing conditional use permit C.U.P. allows for religious / church uses
- Additional paved lot can be used for parking
- Access 7 Days a week
- Close proximity to new retail development (eateries, gastro-pubs and more)
- Quick Access to H-78 & I-5
- **LEASE RATE: \$6,000 / Month Modified Gross**



CONTACT AGENTS FOR ADDITIONAL INFO:

GREG GERSHMAN
ggershman@lee-associates.com
(760) 929-7861
CalBRE #01909272

TRENT FRANCE
tfrance@lee-associates.com
(760) 929-7838
CalBRE #00984842

Lee & Associates Commercial Real Estate Services - 1900 Wright Place Suite 200 - Carlsbad, CA 92009

No warranty or representation is made to the accuracy of the foregoing transaction. Terms of sale or lease and availability are subject to change or withdrawal without notice.

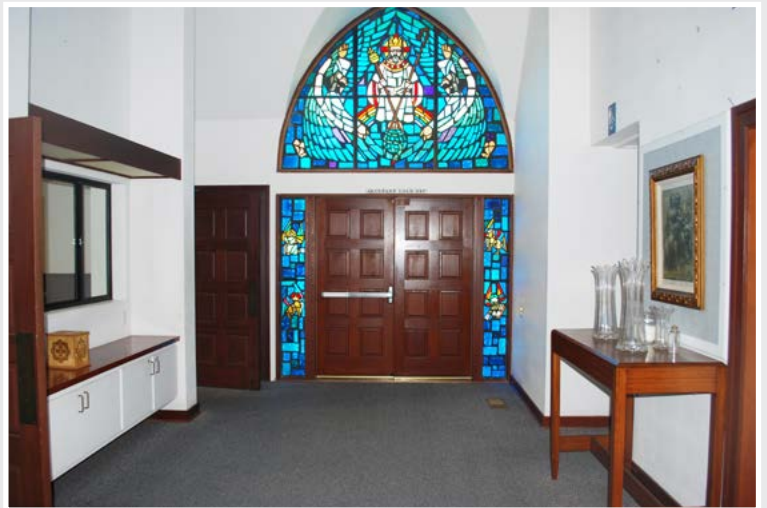
FOR LEASE

511 WEST ST, OCEANSIDE, CA

LEE & ASSOCIATES®
COMMERCIAL REAL ESTATE SERVICES



PROPERTY INTERIOR:



GREG GERSHMAN
ggershman@lee-associates.com
(760) 929-7861
CalBRE #01909272

LEE & ASSOCIATES®
COMMERCIAL REAL ESTATE SERVICES

TRENT FRANCE
tfrance@lee-associates.com
(760) 929-7838
CalBRE #00984842

Lee & Associates Commercial Real Estate Services - 1900 Wright Place Suite 200 - Carlsbad, CA 92009

No warranty or representation is made to the accuracy of the foregoing transaction. Terms of sale or lease and availability are subject to change or withdrawal without notice.

FOR LEASE

511 WEST ST, OCEANSIDE, CA

LEE & ASSOCIATES®
COMMERCIAL REAL ESTATE SERVICES



PROPERTY INTERIOR:



GREG GERSHMAN
ggershman@lee-associates.com
(760) 929-7861
CalBRE #01909272

LEE & ASSOCIATES®
COMMERCIAL REAL ESTATE SERVICES

TRENT FRANCE
tfrance@lee-associates.com
(760) 929-7838
CalBRE #00984842

Lee & Associates Commercial Real Estate Services - 1900 Wright Place Suite 200 - Carlsbad, CA 92009

No warranty or representation is made to the accuracy of the foregoing transaction. Terms of sale or lease and availability are subject to change or withdrawal without notice.

FOR LEASE

511 WEST ST, OCEANSIDE, CA



GREG GERSHMAN
ggershman@lee-associates.com
(760) 929-7861
CalBRE #01909272

TRENT FRANCE
tfrance@lee-associates.com
(760) 929-7838
CalBRE #00984842