



GOODMANREALESTATE.COM
216.381.8200

EUCLID3

Cleveland, Ohio



HIGHLIGHTS

- Join the Uptown Community!
- Exciting addition to vibrant Uptown Cleveland
- 3,400 square feet (divisible) at the corner of Euclid Avenue and East 115th Street
- Available 2020
- Ground level retail with student housing above
- Located in University Circle, a cultural, medical, and educational district, home to 17 major institutions including University Hospitals, The Cleveland Clinic, The Cleveland Institute of Art, The Cleveland Museum of Art, and Case Western Reserve University

DEMOGRAPHICS

POPULATION	1 MILE	3 MILE	5 MILE
2023 Projection	20,387	138,097	302,990
2018 Estimate	20,623	142,373	311,482
INCOME	1 MILE	3 MILE	5 MILE
2018 Average	\$50,221	\$48,608	\$54,887
2018 Median	\$29,922	\$27,613	\$32,184
DAYTIME POPULATION	1 MILE	3 MILE	5 MILE
2018 Employees	15,793	61,308	188,749

LEASING INFORMATION

www.goodmanrealestate.com
216.381.8200

CLEVELAND THE OFFICES AT LEGACY VILLAGE
25333 CEDAR ROAD, SUITE 305
CLEVELAND, OH 44124

COLUMBUS CORPORATE HILL II, SUITE 108
100 W. OLD WILSON BRIDGE ROAD
COLUMBUS, OH 43085

JIM BECKER

Senior Executive/Director

jim@goodmanrealestate.com



LEASING INFORMATION

www.goodmanrealestate.com
216.381.8200

JIM BECKER
Senior Executive/Director
jim@goodmanrealestate.com

EUCLID3

Cleveland, Ohio





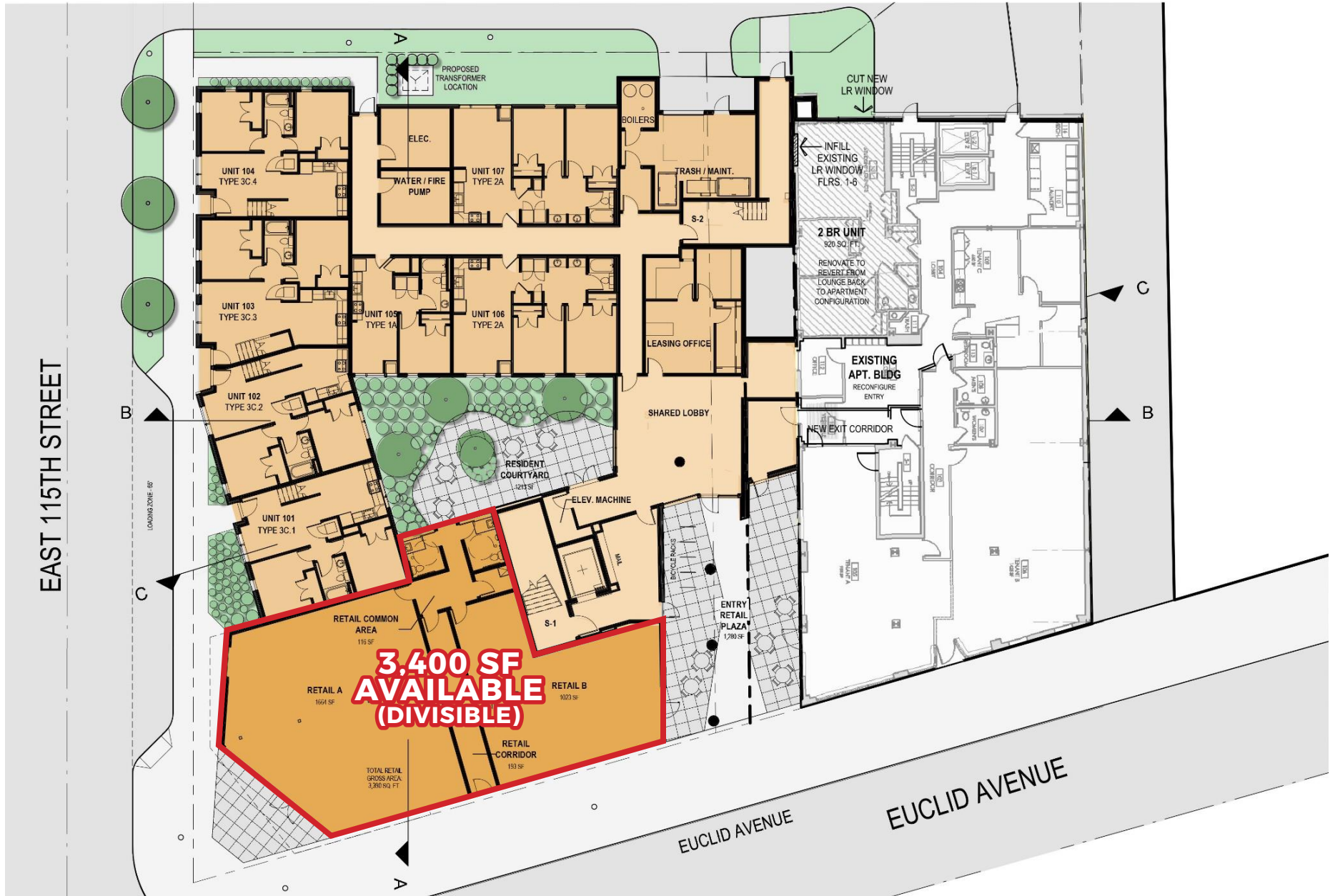
LEASING INFORMATION

www.goodmanrealestate.com
216.381.8200

JIM BECKER
Senior Executive/Director
jim@goodmanrealestate.com

EUCLID3

Cleveland, Ohio





LEASING INFORMATION

www.goodmanrealestate.com
216.381.8200

JIM BECKER
Senior Executive/Director
jim@goodmanrealestate.com

EUCLID3

Cleveland, Ohio

- T.O. PARAPET 56' - 8"
- TRUSS BEARING 49' - 2"
- FIN. 4TH FLOOR 40' - 2"
- FIN. 3RD FLOOR 29' - 6"
- FIN. 2ND FLOOR 18' - 10"
- FIN. MEZZANINE 9' - 2"
- FIN. 1ST FLOOR 0' - 0"



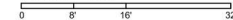
SOUTH ELEVATION - EUCLID AVENUE



WEST ELEVATION - 115TH ST.

- T.O. PARAPET 56' - 8"
- TRUSS BEARING 49' - 2"
- FIN. 4TH FLOOR 40' - 2"
- FIN. 3RD FLOOR 29' - 6"
- FIN. 2ND FLOOR 18' - 10"
- FIN. MEZZANINE 9' - 2"
- FIN. 1ST FLOOR 0' - 0"

SCALE: 1" = 16'-0"



12.20.2018 RDLA 18042

EUCLID3 STUDENT HOUSING | CLEVELAND, OHIO

The drawings, specifications, ideas, design and arrangements represented thereby are and shall remain the property of the architect. No part of shall be copied, disclosed to others or used in conjunction with any work or project other than the specific project for which they have been prepared and developed without the written consent of the architect. Visual contact with these drawings or specifications shall constitute conclusive evidence of acceptance of these conditions. When dimensions on these drawings shall have precedence over scaled dimensions. Contractors shall verify and be responsible for all dimensions and conditions on the job site, and the office must be notified of any variations from the dimensions and conditions shown by these drawings.



1938 Euclid Avenue, Suite 200
Cleveland, Ohio 44115





LEASING INFORMATION

www.goodmanrealestate.com
216.381.8200

JIM BECKER
Senior Executive/Director
jim@goodmanrealestate.com

EUCLID3

Cleveland, Ohio



THE INFORMATION ABOVE HAS BEEN OBTAINED FROM SOURCES BELIEVED TO BE RELIABLE. GOODMAN REAL ESTATE SERVICES GROUP LLC AND ITS AGENTS, ASSOCIATES, AND EMPLOYEES MAKE NO GUARANTEE, WARRANTY OR REPRESENTATION ABOUT IT. ALL IMAGES CONTAINED HEREIN ARE THE PROPERTY OF GOODMAN REAL ESTATE SERVICES GROUP LLC AND SHALL NOT BE DUPLICATED OR REPRODUCED WITHOUT EXPRESS WRITTEN CONSENT OF GOODMAN REAL ESTATE SERVICES GROUP LLC. YOU ACKNOWLEDGE THAT, AS REQUIRED BY THE STATE OF OHIO, YOU HAVE RECEIVED THE CONSUMER GUIDE TO AGENCY RELATIONSHIPS.

