

New Branch Real Estate Advisors

PROUDLY OFFERS

340-342 Penny Lane & 348-350 Penny Lane NE, Concord, NC 28025



340-342 Penny Lane

- ±10,240 SF
- For Sale: \$850,000
- For Lease: \$14.00-\$16.00 SF (Gross)
- +/- 45 Parking Spots

348-350 Penny Lane

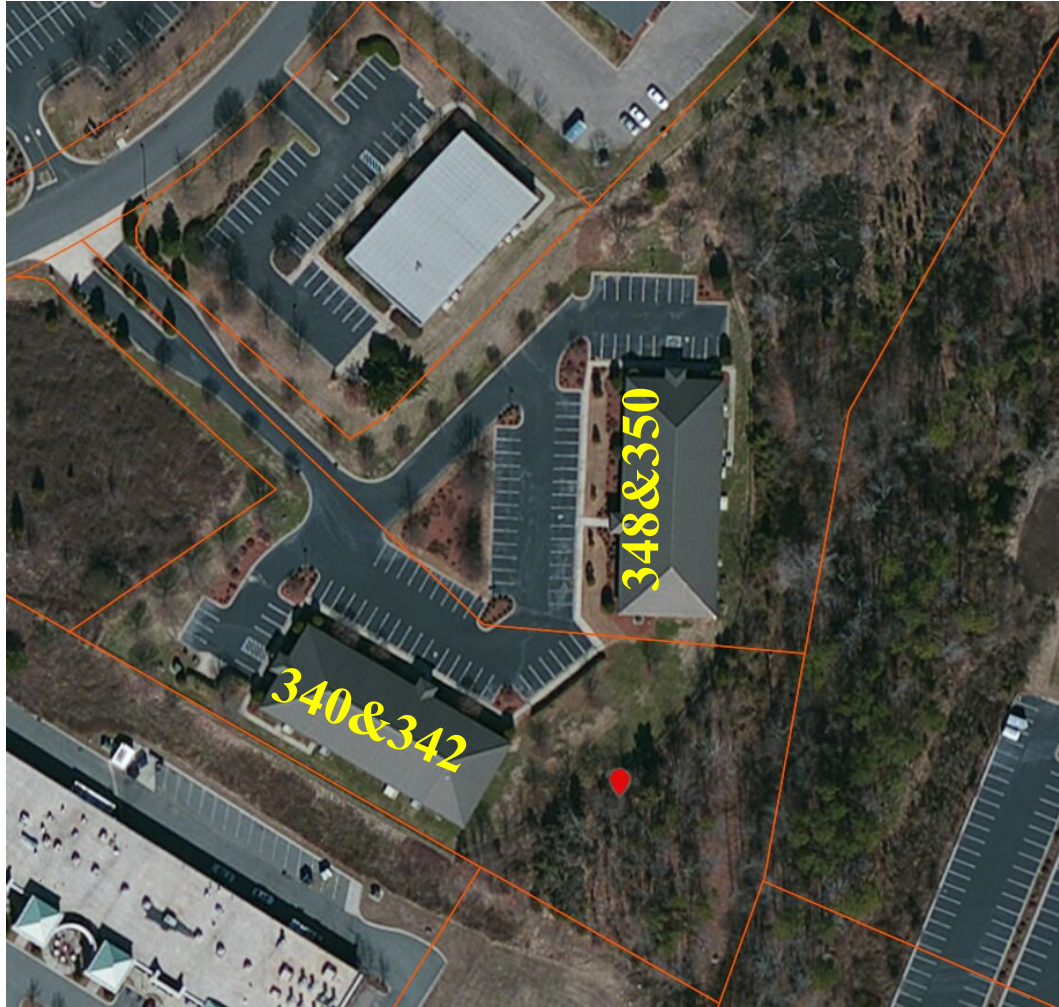
- ± 10,240 SF
- For Sale: \$850,000
- For Lease: \$14.00-\$16.00 SF (Gross)
- +/- 45 Parking Spots

Other Facts:

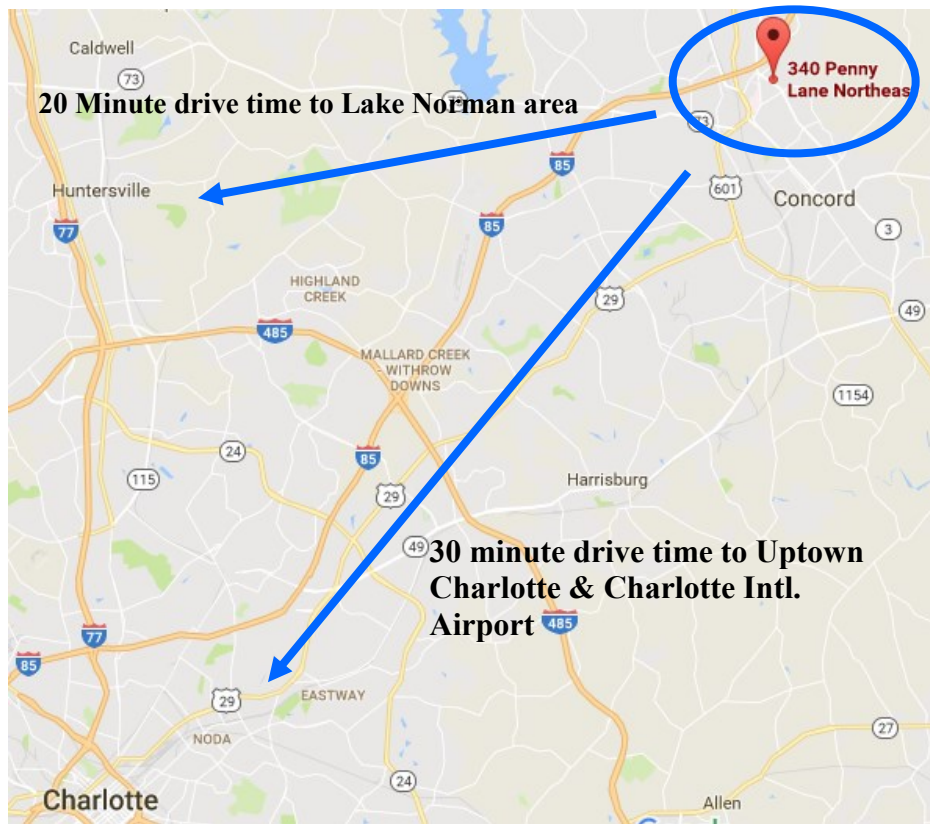
- The sites can be combined for ± 4.79 acres, for sale at \$1,700,000
- Access to Branchview Dr. & Copperfield Blvd. (20,000 vpd - ESRI 2016)
- Zoned C-2; approx. one mile away from Interstate 85
- Convenient access to CMC-Northeast Hospital and Carolina Mall



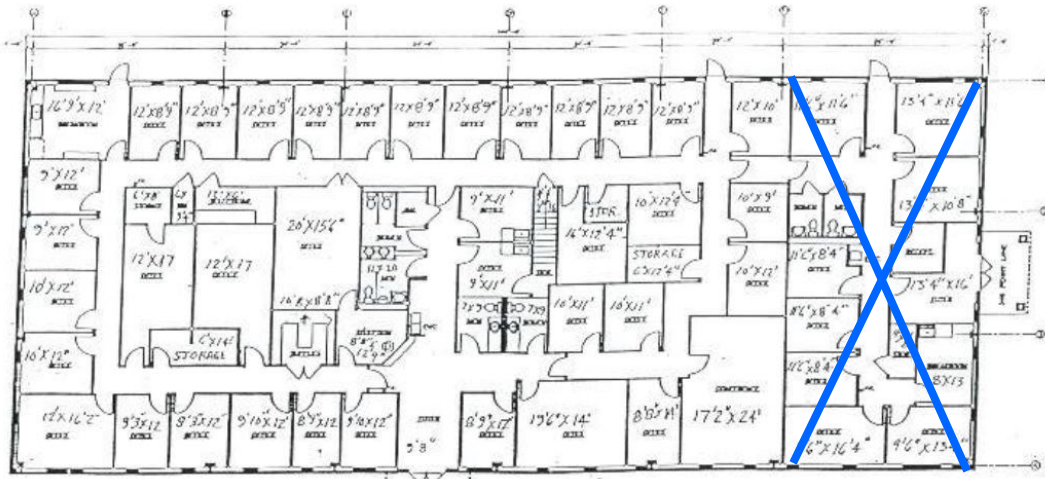
363 CHURCH STREET NORTH, SUITE 240
CONCORD, NC 28025
704-786-8888
WWW.NEWBRANCHRE.COM
CONTACT: REID BAKER OR HARRIS MORRISON



363 CHURCH STREET NORTH, SUITE 240
CONCORD, NC 28025
704-786-8888
WWW.NEWBRANCHRE.COM
CONTACT: REID BAKER OR HARRIS MORRISON



363 CHURCH STREET NORTH, SUITE 240
 CONCORD, NC 28025
 704-786-8888
 WWW.NEWBRANCHRE.COM
 CONTACT: REID BAKER OR HARRIS MORRISON



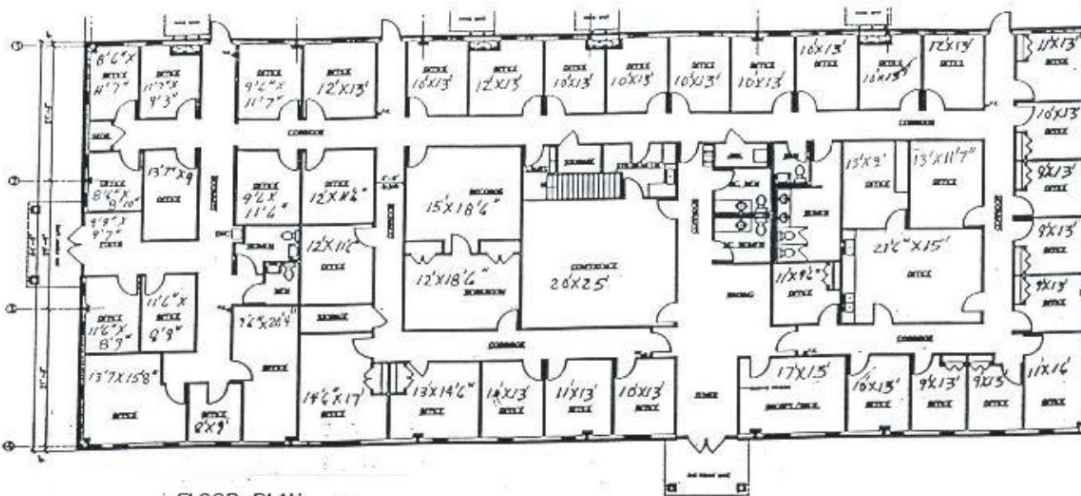
FLOOR PLAN

LEASED

340-342 Penny Lane
Concord, NC 28025

10,240 square feet
(outside wall to outside wall)

340-342 Penny Lane



FLOOR PLAN

348-350 Penny Lane
Concord, NC 28025

10,240 square feet (outside wall to outside wall)

348-350 Penny Lane



363 CHURCH STREET NORTH, SUITE 240
CONCORD, NC 28025
704-786-8888
WWW.NEWBRANCHRE.COM
CONTACT: REID BAKER OR HARRIS MORRISON