

Property Description

Lot 7 is a 25,850 square foot vacant parcel located in the Holiday Park commercial subdivision, a professional office park in Algiers. Adjacent to the Rouse's center and behind Carr Pharmacy and O'Reilly's Auto Parts.

Small, park like campus.

Convenient to General DeGaulle. 10 minutes from the CBD/French Quarter.

Location Description

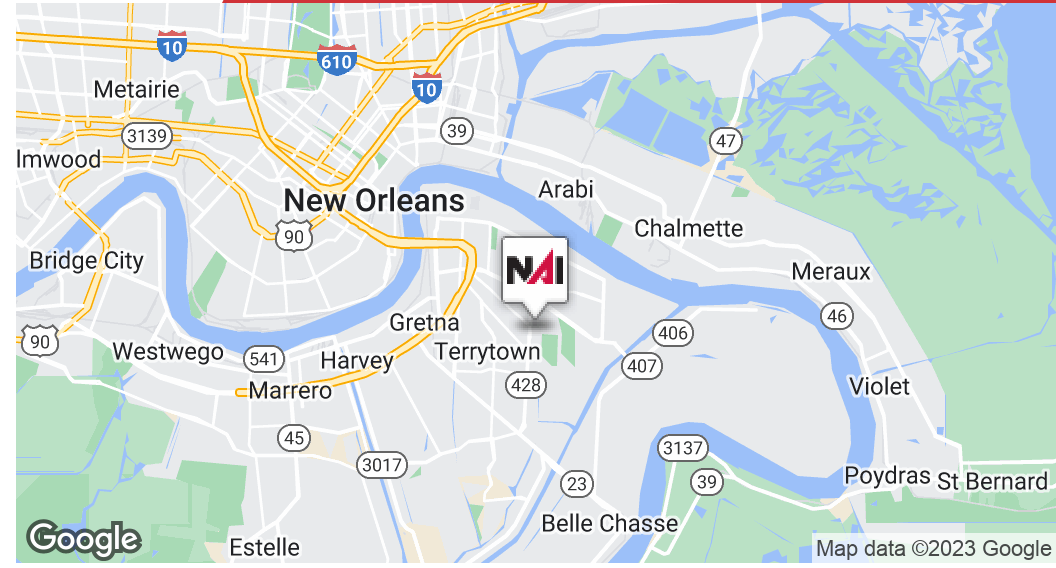
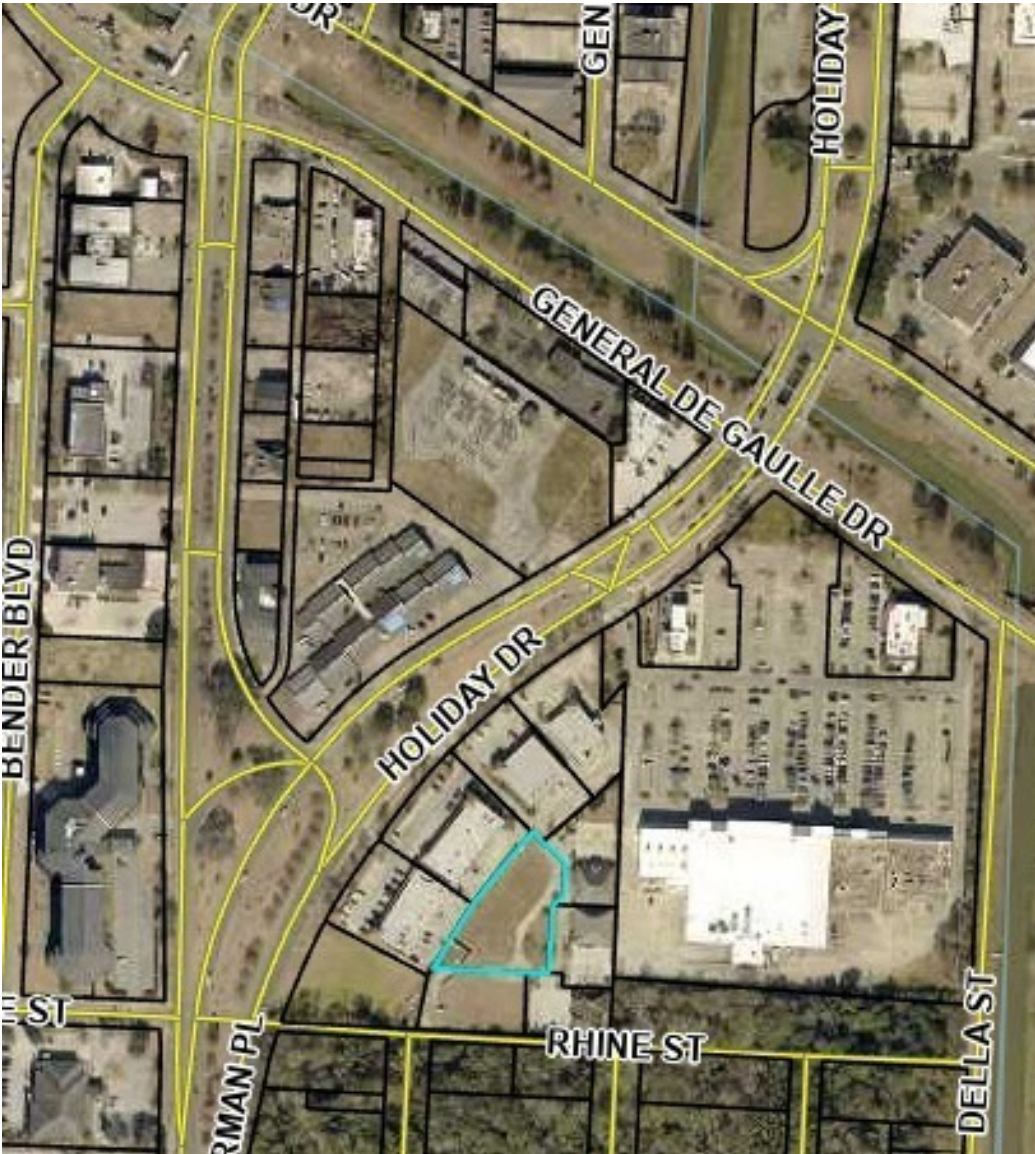
Algiers, Westbank of New Orleans. Vacant parcel off Behrman Highway at General De Gaulle Drive; and is adjacent to the Rouse's Center and Carr Pharmacy.

Offering Summary

Sale Price:	\$159,000
Lot Size:	25,850 SF
\$/SF	\$6.15
Zoning	C-3

Demographics

	0.25 Miles	0.5 Miles	1 Mile
Total Households	782	3,062	7,370
Total Population	1,511	5,329	15,783

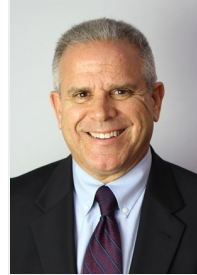




Ryan Pearce

Commercial Sales & Leasing

C: 504.444.1503
rpearce@latterblum.com



Paul Richard

Commercial Sales & Leasing

C: 504.957.5759
prichard@latterblum.com

LA #0995682184