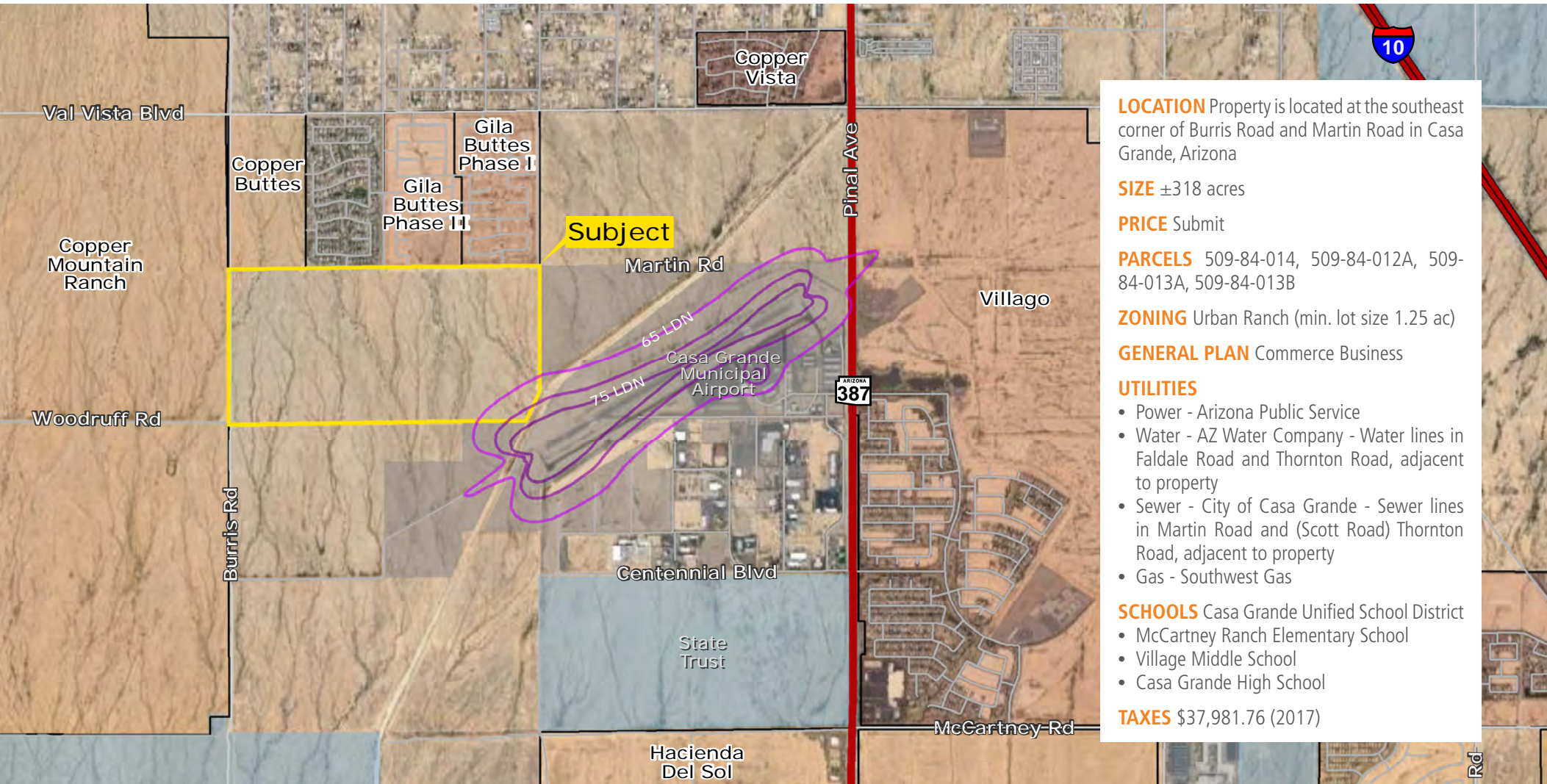


VIENTO ±318 ACRES

EXCLUSIVE LISTING | BURRIS ROAD & MARTIN ROAD | CASA GRANDE, ARIZONA



LOCATION Property is located at the southeast corner of Burris Road and Martin Road in Casa Grande, Arizona

SIZE ±318 acres

PRICE Submit

PARCELS 509-84-014, 509-84-012A, 509-84-013A, 509-84-013B

ZONING Urban Ranch (min. lot size 1.25 ac)

GENERAL PLAN Commerce Business

UTILITIES

- Power - Arizona Public Service
- Water - AZ Water Company - Water lines in Faldale Road and Thornton Road, adjacent to property
- Sewer - City of Casa Grande - Sewer lines in Martin Road and (Scott Road) Thornton Road, adjacent to property
- Gas - Southwest Gas

SCHOOLS

- Casa Grande Unified School District
- McCartney Ranch Elementary School
- Village Middle School
- Casa Grande High School

TAXES \$37,981.76 (2017)

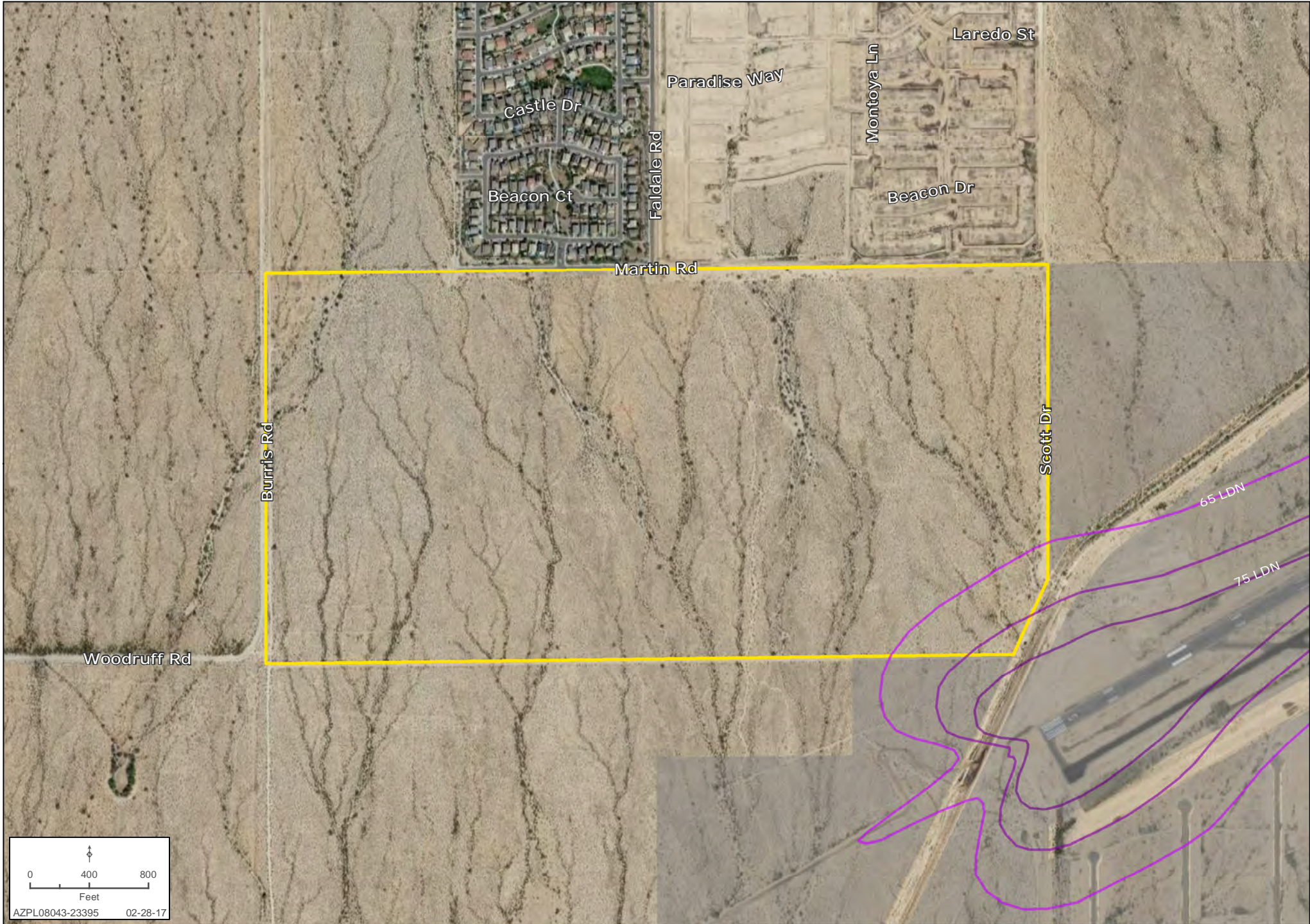
Ben Heglie | bheglie@landadvisors.com Ryan Semro | rsemro@landadvisors.com Bret Rinehart | brinehart@landadvisors.com
4900 North Scottsdale Road, Suite 3000, Scottsdale, Arizona 85251 ph. 480.483.8100 | www.landadvisors.com

The information contained herein is from sources deemed reliable. We have no reason to doubt its accuracy but do not guarantee it. It is the responsibility of the person reviewing this information to independently verify it. This package is subject to change, prior sale or complete withdrawal. AZPL08043-3.13.18



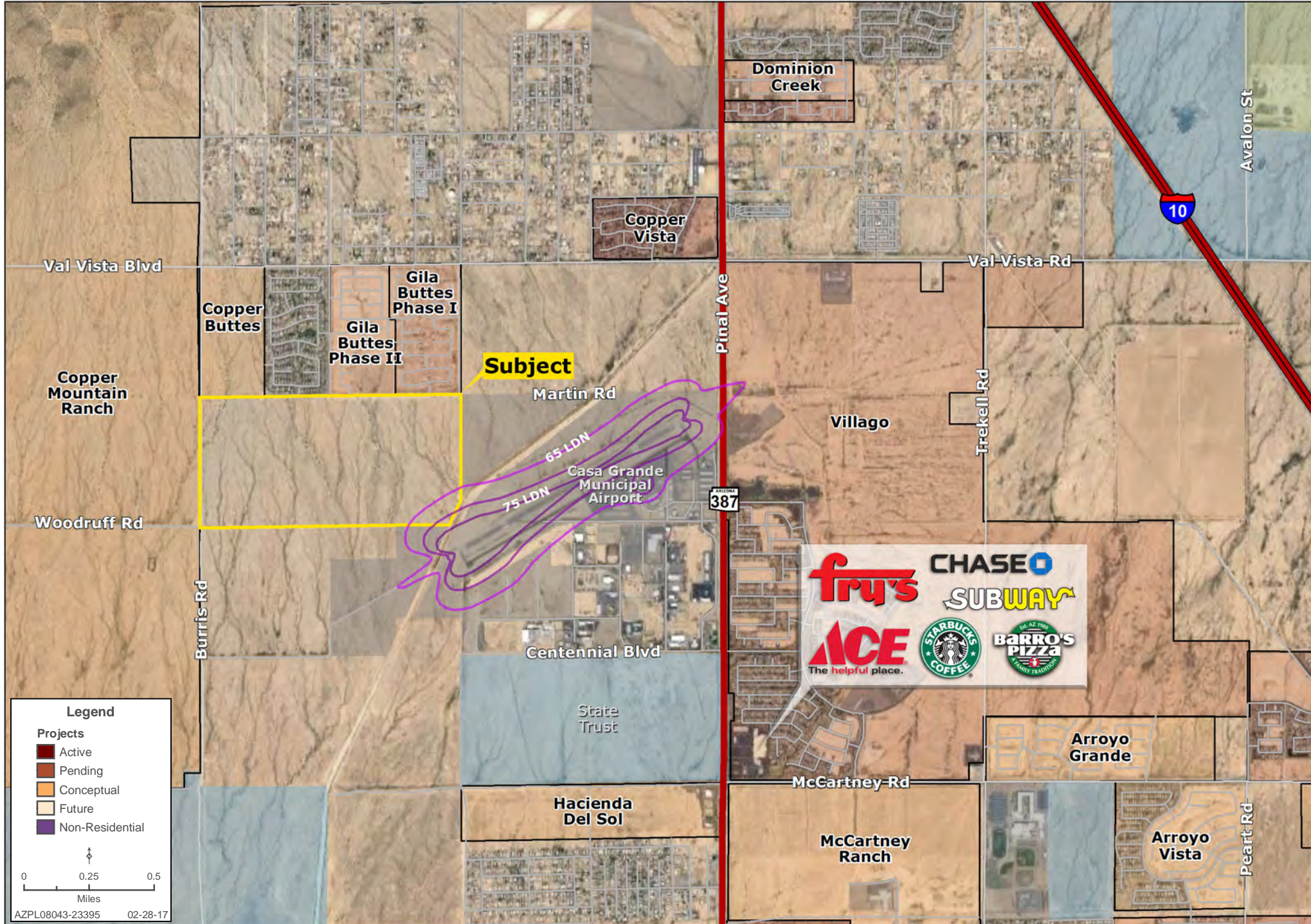
PROPERTY DETAIL MAP

Ben Heglie | Ryan Semro | Bret Rinehart | 480.483.8100 | www.landadvisors.com



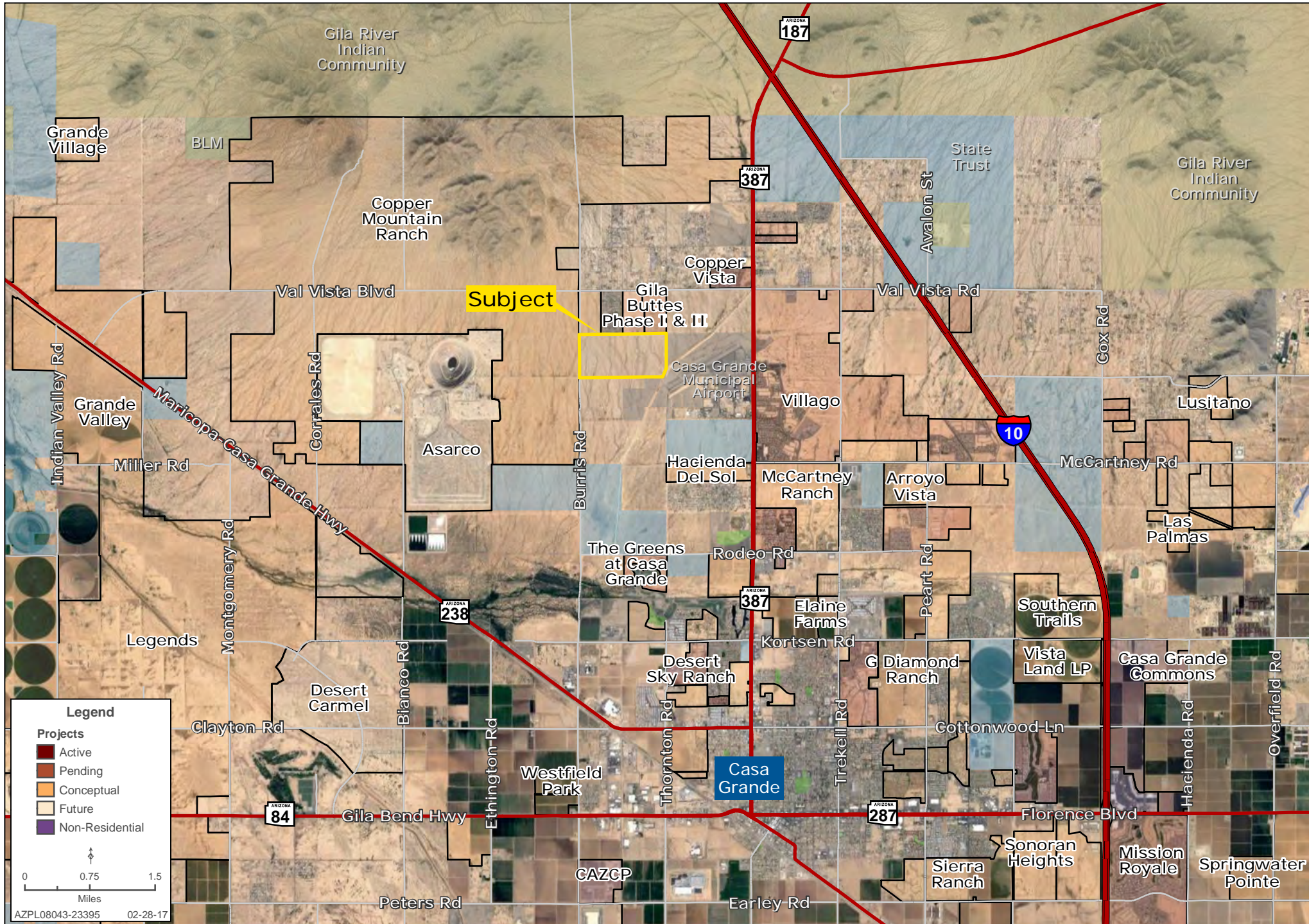
SURROUNDING AREA MAP

Ben Heglie | Ryan Semro | Bret Rinehart | 480.483.8100 | www.landadvisors.com



SURROUNDING DEVELOPMENT MAP

Ben Heglie | Ryan Semro | Bret Rinehart | 480.483.8100 | www.landadvisors.com



REGIONAL MAP

Ben Heglie | Ryan Semro | Bret Rinehart | 480.483.8100 | www.landadvisors.com

