

# FOR LEASE



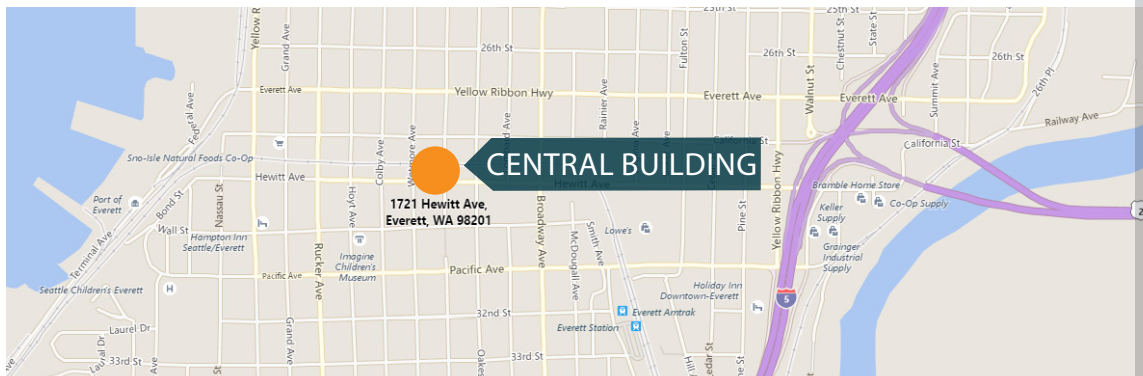
**WESTLAKE**  
ASSOCIATES, INC.



## CENTRAL BUILDING | 1721 Hewitt Avenue, Everett, WA 98201

### FEATURES

- + Prime Downtown Everett Location
- + Full Service Leases
- + Newly Remodeled Offices
- + Off-Site Monthly Garage Parking



**FOR MORE  
INFORMATION  
PLEASE CONTACT:**

**Jeff Ayers**

BROKER  
**206.505.9433**

jeff@  
westlakeassociates.com

**Nicholas Gill**

PRINCIPAL | BROKER  
**206.505.9410**

gill@  
westlakeassociates.com

## Space Availability

# Central Building | 1721 Hewitt Avenue, Everett, WA 98201

---

Suite #	Square Feet	Monthly Rent
305-322	3,999 SF	\$6,665
305	238 SF	\$397
306	238 SF	\$397
307	231 SF	\$385
308	236 SF	\$393
309	234 SF	\$390
310	239 SF	\$398
311	239 SF	\$398
316-317	275 SF	\$458
318	238 SF	\$397
319	238 SF	\$397
310-319	2,005 SF	\$3,341
320-321	281 SF	\$468
404	157 SF	\$350
407-411	1,529 SF	\$2,538
416	520 SF	\$887
420	557 SF	\$928
506	279 SF	\$465
512-514	500 SF	\$833
525	146 SF	\$350
612	184 SF	\$475

3RD FLOOR



**Jeff Ayers**  
BROKER  
206.505.9433

**Nicholas Gill**  
PRINCIPAL | BROKER  
206.505.9410



**WESTLAKE**  
ASSOCIATES, INC.

4TH FLOOR



**Jeff Ayers**  
BROKER  
206.505.9433

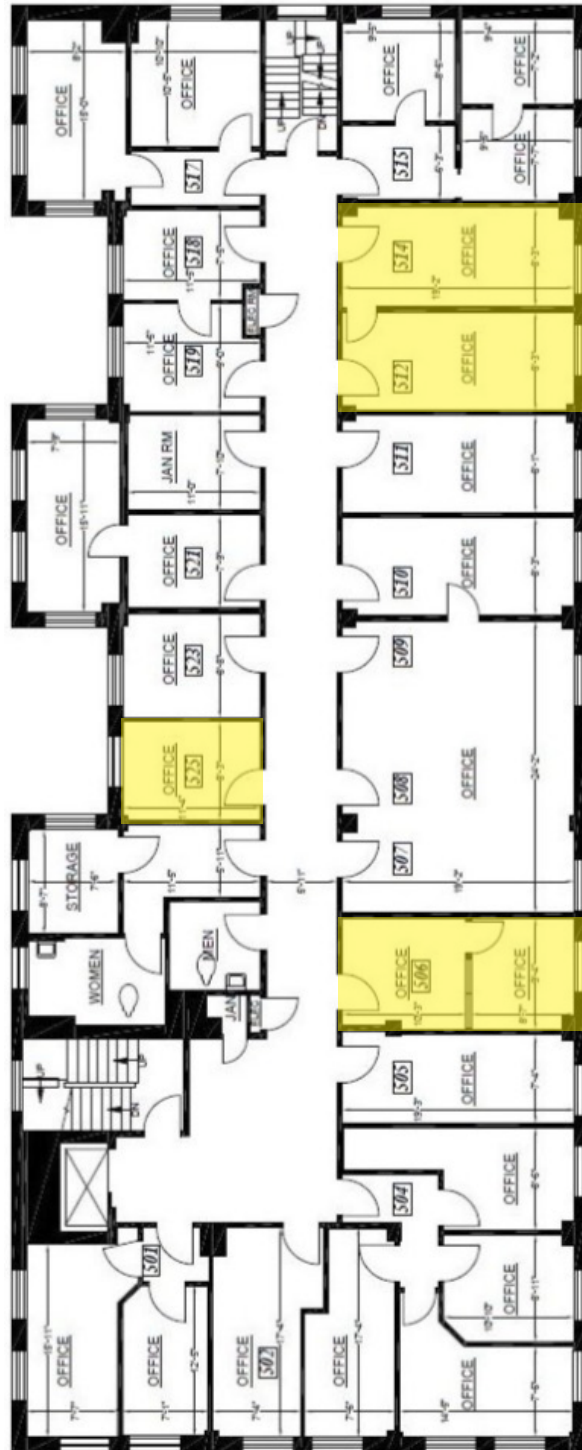
**Nicholas Gill**  
PRINCIPAL | BROKER  
206.505.9410



**WESTLAKE**  
ASSOCIATES, INC.



5TH FLOOR



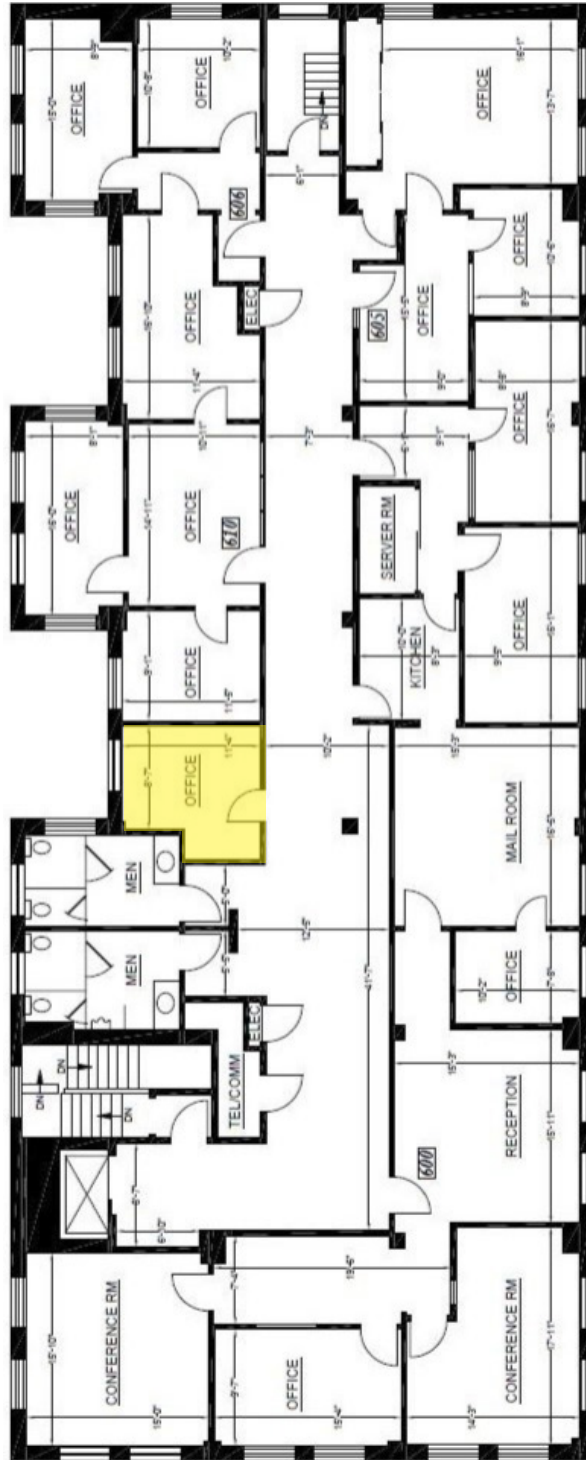
**Jeff Ayers**  
BROKER  
206.505.9433

**Nicholas Gill**  
PRINCIPAL | BROKER  
206.505.9410



**WESTLAKE**  
ASSOCIATES, INC.

6TH FLOOR



**Jeff Ayers**  
BROKER  
206.505.9433

**Nicholas Gill**  
PRINCIPAL | BROKER  
206.505.9410



**WESTLAKE**  
ASSOCIATES, INC.