



# 2501 DAVEY

103,000 sq. ft. of modern office, research and laboratory building



Campus style design with natural light architectural features



Convenient location near I-55 and I-355 interchanges



Single to multi tenant configuration opportunities



Abundant infrastructure to support expansion



Auditorium, cafeteria and conference rooms

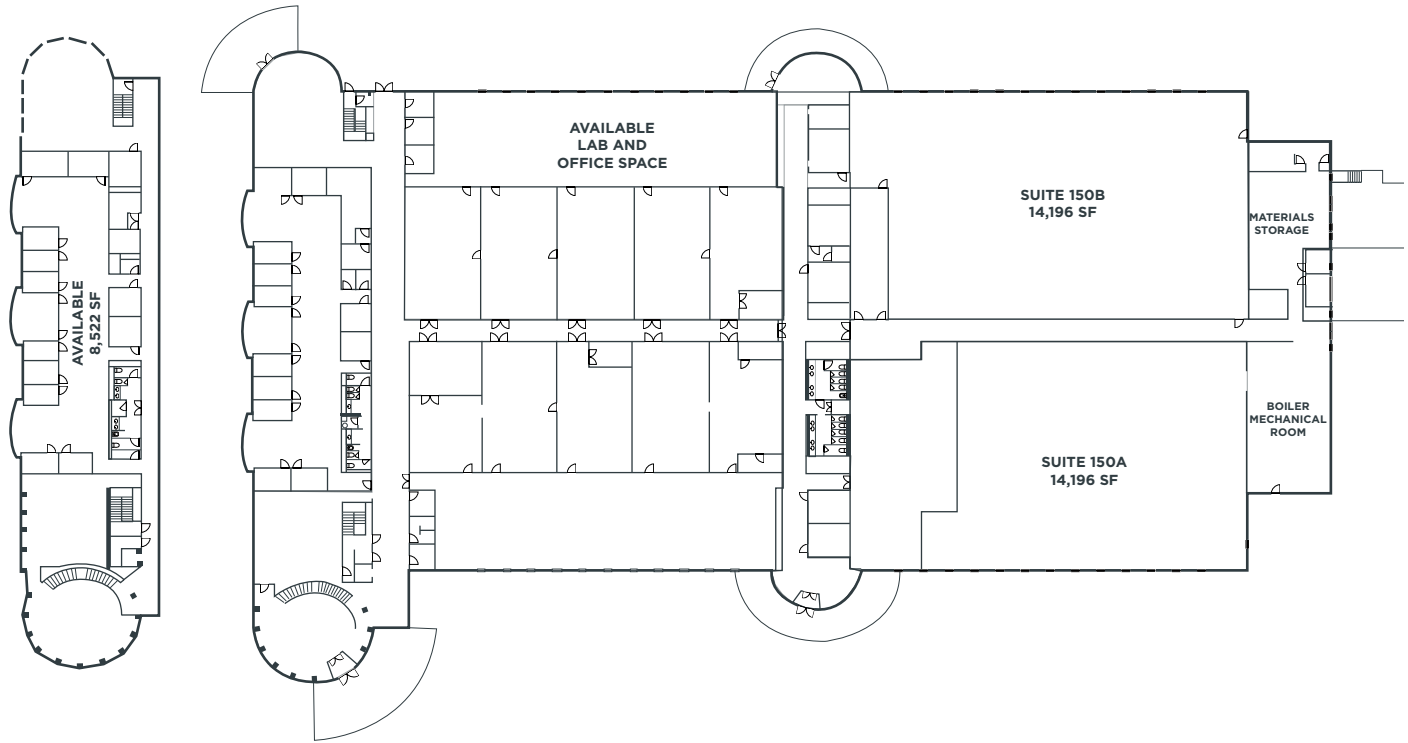


**Ample Amount of Parking**  
300 parking spaces

**CBRE**

# FLOOR PLAN

103,000 SF AVAILABLE



## LAB SPACE

- 10 existing lab suites – 1,800 SF
- Combined 3,500 SF of larger scale chemistry Suites



# OFFICE SPACE

57,000 SF of finished office space/  
conference room



SECURITY  
CARD  
ACCESS



LOCKABLE FILE  
AND STORAGE  
CAPABILITY



4 ACRES OF  
ADDITIONAL  
LAND TO EXPAND  
THE BUILDING

# ADDITIONAL WAREHOUSE/ OFFICE SPACE

- 14,200 SF of warehouse space with 18'6"
- 1 dock and 1 drive in door

# AMENITIES

## CAFETERIA

- Seating for 96
- Kitchen, warming area and vending machines

## LARGE CONFERENCE ROOM

- 80" HDMI VGA/DVI Monitor with SMARTBOARD
- Multiple seating arrangements for any size meeting
- Small serving kitchen for large meetings

## AUDITORIUM

- Seating for 60+
- Audio/Visual equipment in place









2501





# 2501 DAVEY

State of the Art Multi-Purpose  
Building for Lease

**David Saad**  
+1 312 935 1489  
[david.saad@cbre.com](mailto:david.saad@cbre.com)

**Patrick Elwood**  
+1 630 573 7050  
[patrick.elwood@cbre.com](mailto:patrick.elwood@cbre.com)

**CBRE**

© 2020 CBRE, Inc. All rights reserved. This information has been obtained from sources believed reliable, but has not been verified for accuracy or completeness. You should conduct a careful, independent investigation of the property and verify all information. Any reliance on this information is solely at your own risk. CBRE and the CBRE logo are service marks of CBRE, Inc. All other marks displayed on this document are the property of their respective owners, and the use of such logos does not imply any affiliation with or endorsement of CBRE. Photos herein are the property of their respective owners. Use of these images without the express written consent of the owner is prohibited. PMStudio\_April2020