

For Lease

Cutting-edge sustainable, creative office space

Formerly an industrial warehouse – once used as practice space by Pearl Jam – The Terry Thomas has been converted to LEED Gold office space by Seattle's award-winning Weber Thompson.

Incredibly sustainable, the building's bright, operable windows and interior open-air courtyard inspire the type of productivity that drives companies to success.

- One block from the South Lake Union streetcar
- Abundant below-grade parking
- Innovative passive cooling system

THE TERRY THOMAS

225 Terry Avenue North
Seattle, WA 98109

Cleita Harvey

+1 206 607 1794

cleita.harvey@am.jll.com

Jim Allison

+1 206 607 1787

jim.allison@am.jll.com

Lisa Stewart

+1 206 607 1786

lisa.stewart@am.jll.com

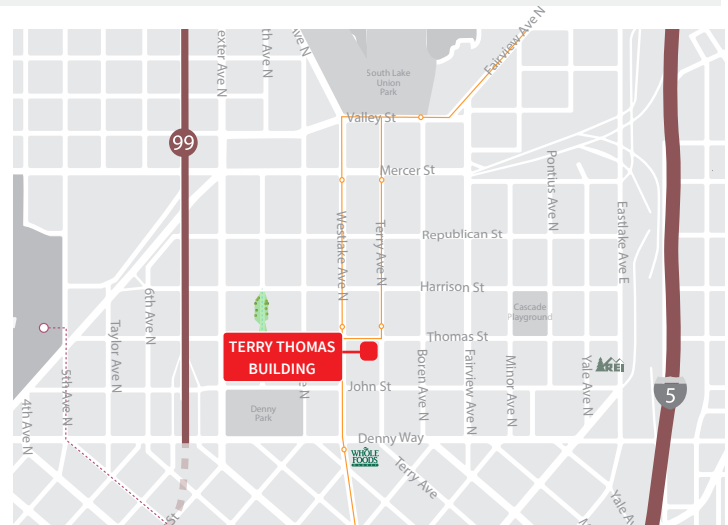
Jones Lang LaSalle Brokerage, Inc.
www.jll.com





The Terry Thomas provides a window into the soul of a firm that practices what it preaches and whose approach to sustainability is as much rooted in common sense as it is in the eco-enthusiasm of its employees.

– Jim Schneider, eco-structure, 6.2008



Designed with tenants top-of-mind

The Terry Thomas building is LEED Gold for building core and LEED Platinum for commercial interiors.

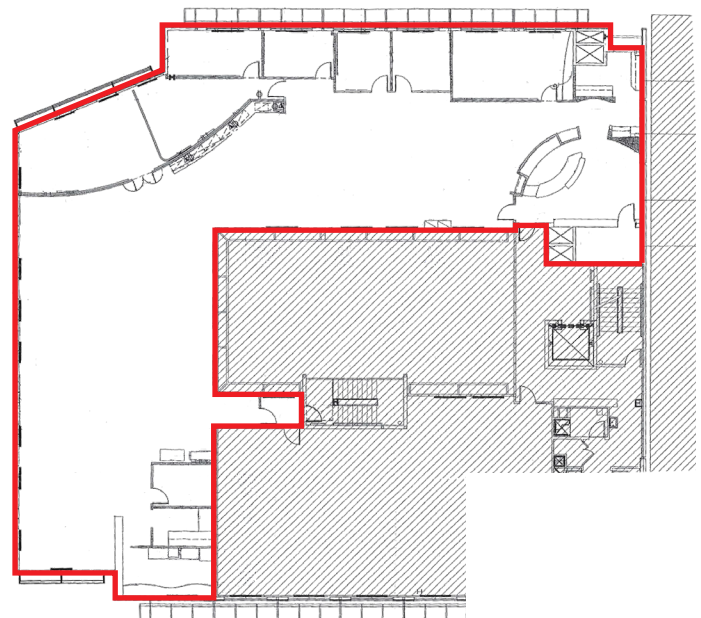
Bold, creative work space

An industrial aesthetic with exposed beams and open floor plan, light filled and efficient space.

97 walk score, classified as “Walker’s Paradise”.

94 transit score, classified as “Rider’s Paradise”.

Amazing access to popular restaurants and food trucks within quick walking distance, including Portage Bay Cafe, Local Seattle, Homegrown, Thai Thani Kitchen, Yellow Dot Cafe, Flying Fish, Cactus, Brave Horse, Cuoco, and Serious Pie & Biscuit.



Available: Suite 400 - 7,973 RSF

DISCLAIMER

© 2018 Jones Lang LaSalle IP, Inc. All rights reserved. The information contained in this document is proprietary to Jones Lang LaSalle and shall be used solely for the purposes of valuating this proposal. All such documentation and information remains the property of Jones Lang LaSalle and shall be kept confidential. Reproduction of any part of this document is authorized only to the extent necessary.