

CenterView Winter Park



PROPERTY DESCRIPTION

Winter Park's Landmark 4-story office building

This Class A property has a refined mix of professional tenants

PROPERTY HIGHLIGHTS

- Prime WP corridor of high-end retail & restaurants.
- Ease of access for clients directly off of I-4.
- On-site banking with ATM with beyond ample parking.
- Approx 65,000 cars/day at intersection.
- Quick access to I-4 and major corridors throughout the Orlando MSA.
- Building signage available (inquire for details).

AVAILABLE SPACE DESCRIPTIONS:

Suite 103 ± 1,300 SF

Prime ground floor space:

- Perfect fit for professional office.
- This space has a unique private entry door direct to parking lot as well as the main lobby entry.
- In-suite breakroom.

LEE ZERIVITZ, SIOR, CCIM

Managing Partner
407.644.CITY
lee@citycommercial.com

CITY COMMERCIAL

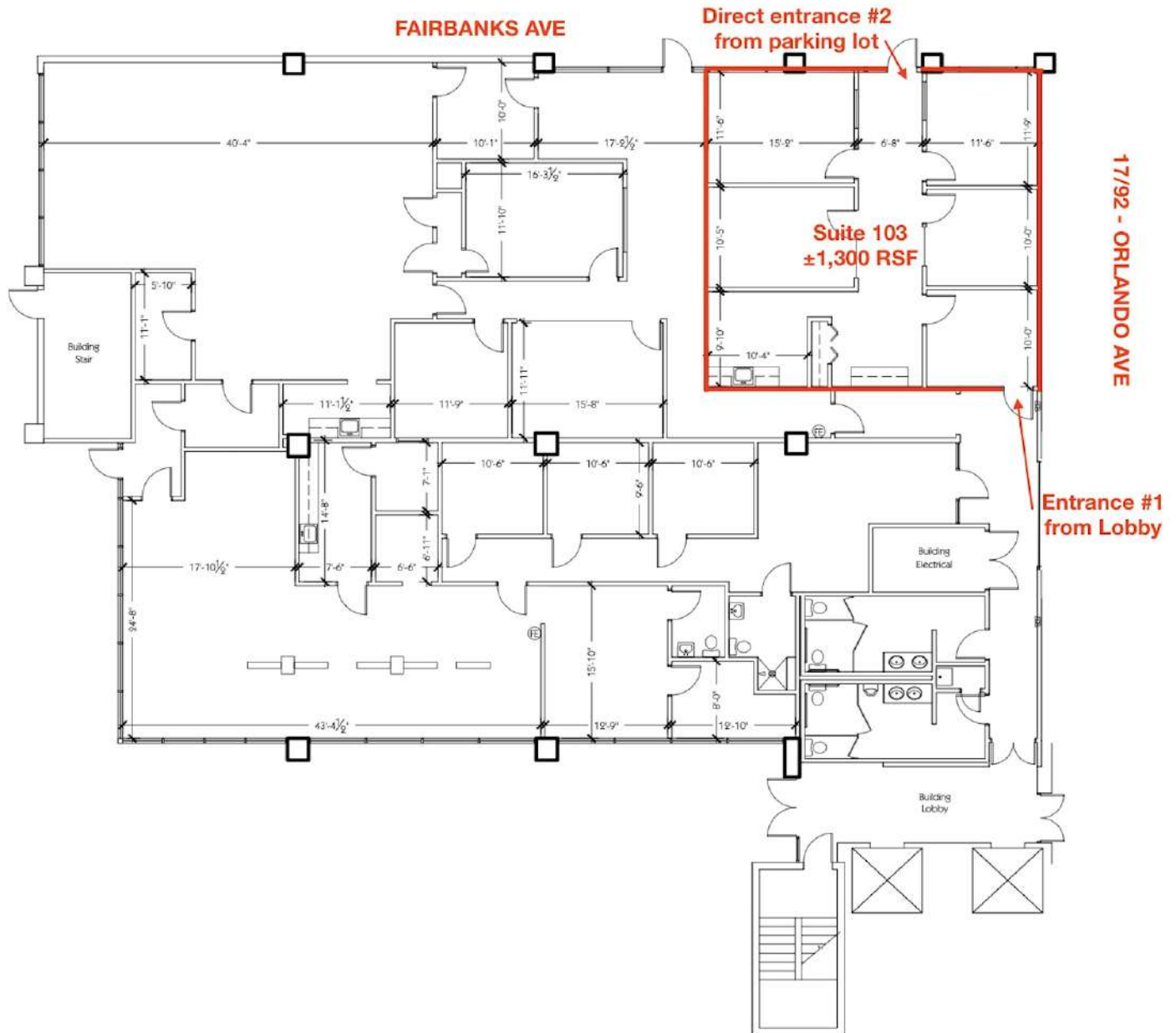
1101 Symonds Ave.
Winter Park, FL 32789
CITYcommercial.com



Suite 103

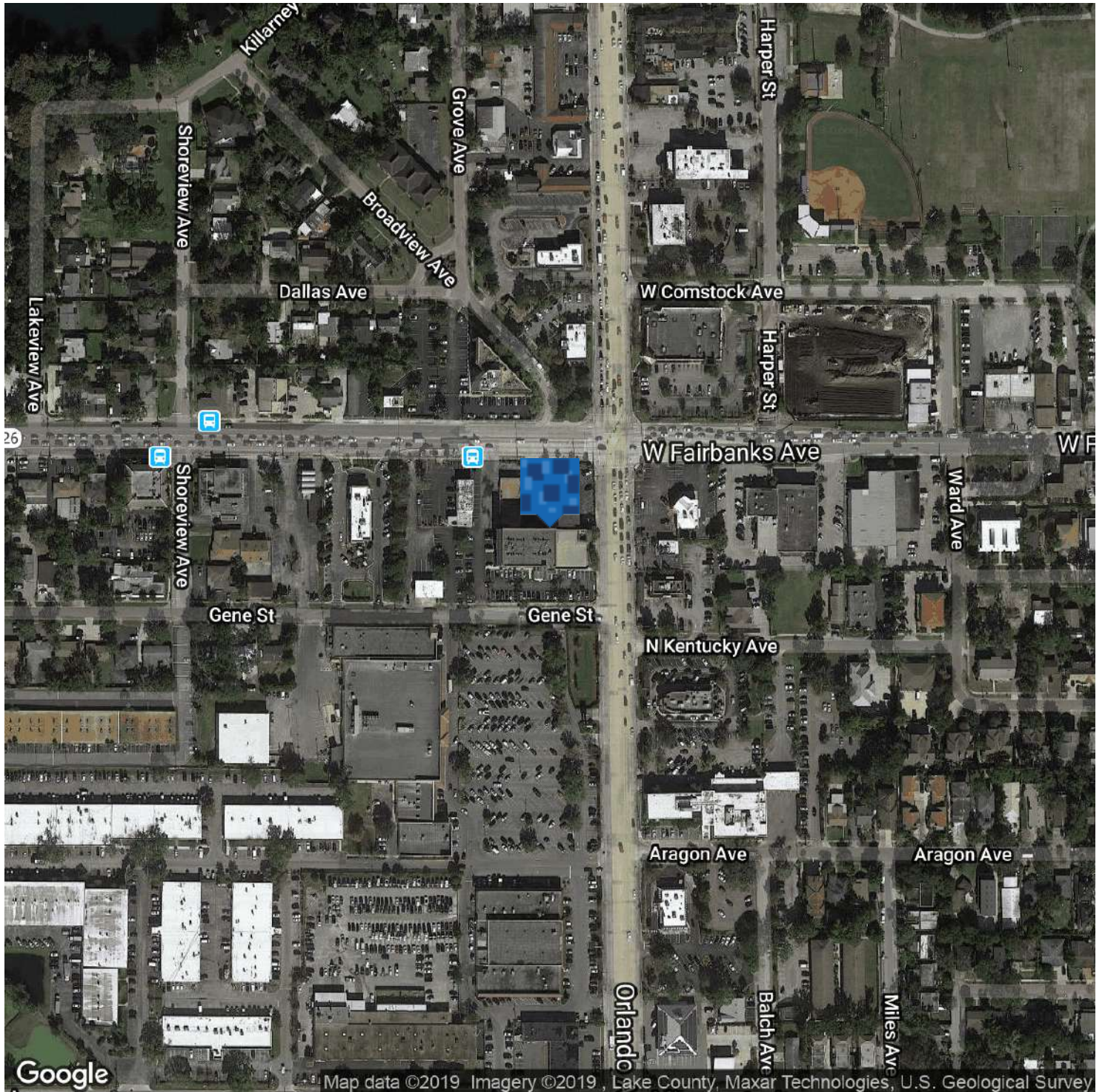


1st Floor Office - Available May 1, 2020



FOR LEASE

631 S. ORLANDO AVE. | WINTER PARK, FL 32789



LEE ZERIVITZ, SIOR, CCIM
Managing Partner
407.644.CITY
lee@citycommercial.com

CITY COMMERCIAL
1101 Symonds Ave.
Winter Park, FL 32789
CITYcommercial.com



Retailer Map



DEMOGRAPHICS	1 MILE	3 MILE
Est HH	5,159	37,763
Avg HH Income	\$78,584	\$109,379
Est Population	10,167	82,035