

SALE

RETAIL

REDEVELOPMENT



FOR SALE // GREAT REDEVELOPMENT RETAIL SITE



SALE PRICE

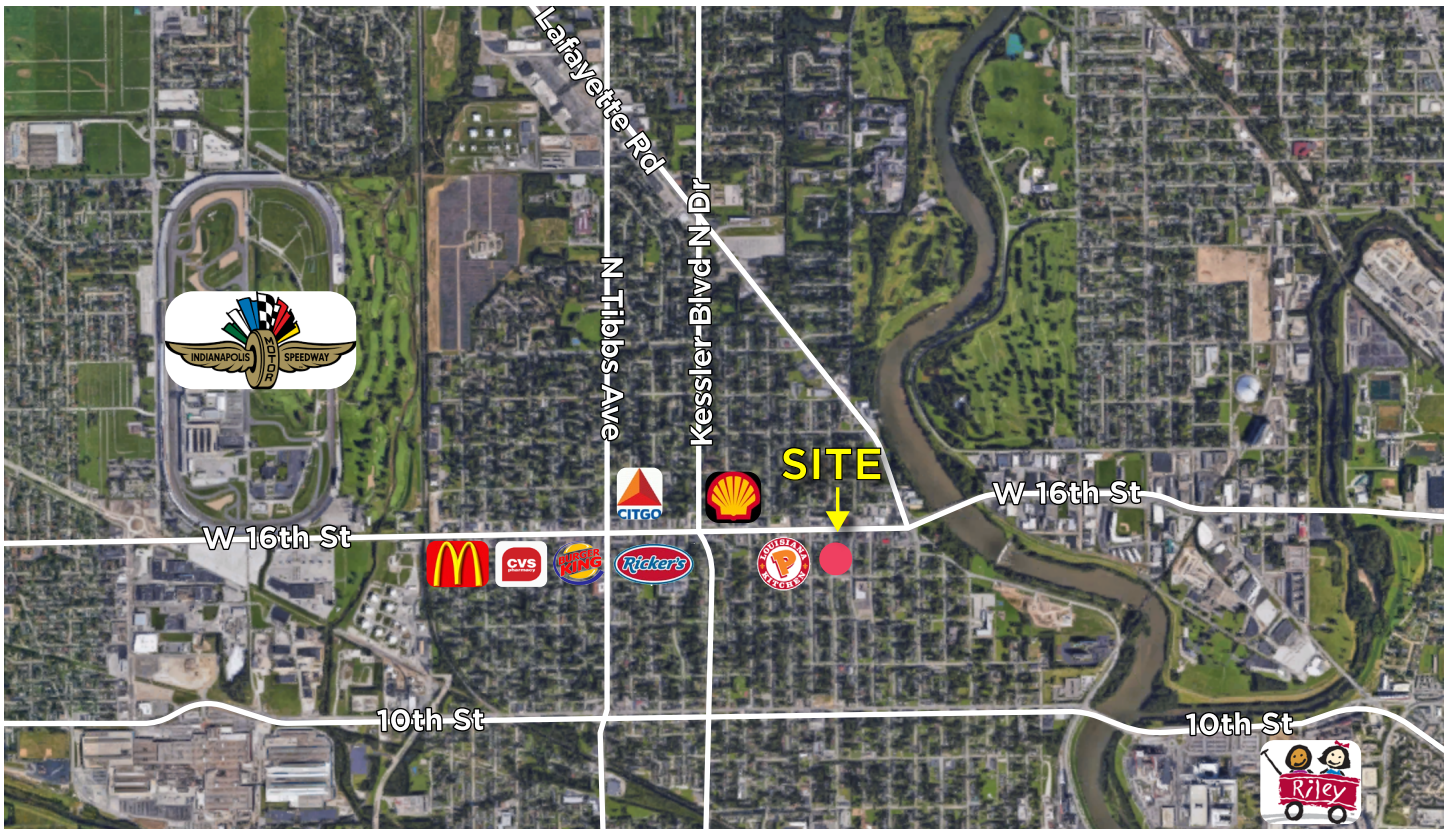
\$650,000

AVAILABLE SPACE

.47 ACRES 3 PARCELS)

For Sale: Three (3) parcels, .47 acre, great for redevelopment on corner of Sharon Ave. and W. 16th St.

- + 3,232 SF Building, vacant lot and 960 SF home
- + Zoned C-3
- + Ample Parking
- + Potential Retail/Restaurant Site with Drive-Thru
- + One Mile East of the Indianapolis Motor Speedway



MELISSA BLACKWELL
 Senior Associate
 ☎ 317.663.6555
 ☎ 317.384.9756
 melissa.blackwell@rcre.com

MICHAEL HORRIGAN
 Vice President
 ☎ 317.663.6538
 ☎ 317.439.3452
 michael.horrigan@rcre.com

RESOURCE
rcre.com

in #growIndiana

The information contained herein was obtained from sources we consider reliable. We cannot be responsible for errors, omissions, prior sale or lease, withdrawal from the market or change in price. Seller and broker make no representation as to the environmental condition of the property and recommend the lessee's/purchaser's independent investigation.

9339 Priority Way West Drive
 Suite 120
 Indianapolis, IN 46240
 317.663.6000