

**PRICE REDUCED**



**RETAIL PROPERTY FOR SALE**

## FORMER RESTAURANT

637 NC 24 27 BYPASS E, ALBEMARLE, NC 28001



# FORMER RESTAURANT

637 NC 24 27 BYPASS E, ALBEMARLE, NC 28001

## PROPERTY OVERVIEW



### OFFERING SUMMARY

<b>Sale Price:</b>	Subject To Offer
<b>Price / SF:</b>	-
<b>Lot Size:</b>	1.06 Acres
<b>Year Built:</b>	1992
<b>Building Size:</b>	4,936 SF
<b>Traffic Counts:</b>	8,100 AADT @ Henson St. (0.11 miles N)
	16,000 AADT @ Bird St. (0.14 miles SW)

### PROPERTY OVERVIEW

Former Denny's restaurant

### PROPERTY HIGHLIGHTS

- 1.06 acres with 60 parking spaces.
- Front parking not owned; \$20,000 annual easement fee.
- Great for retail, restaurant or bank users.
- Zoned GHBD (General Highway Business District)
- 2015 Taxes: \$6,835.42
- Area retailers: Walmart, Lowe's, Belk, JCPenney, Tractor Supply, Office Max, Ingles, and Food Lion.

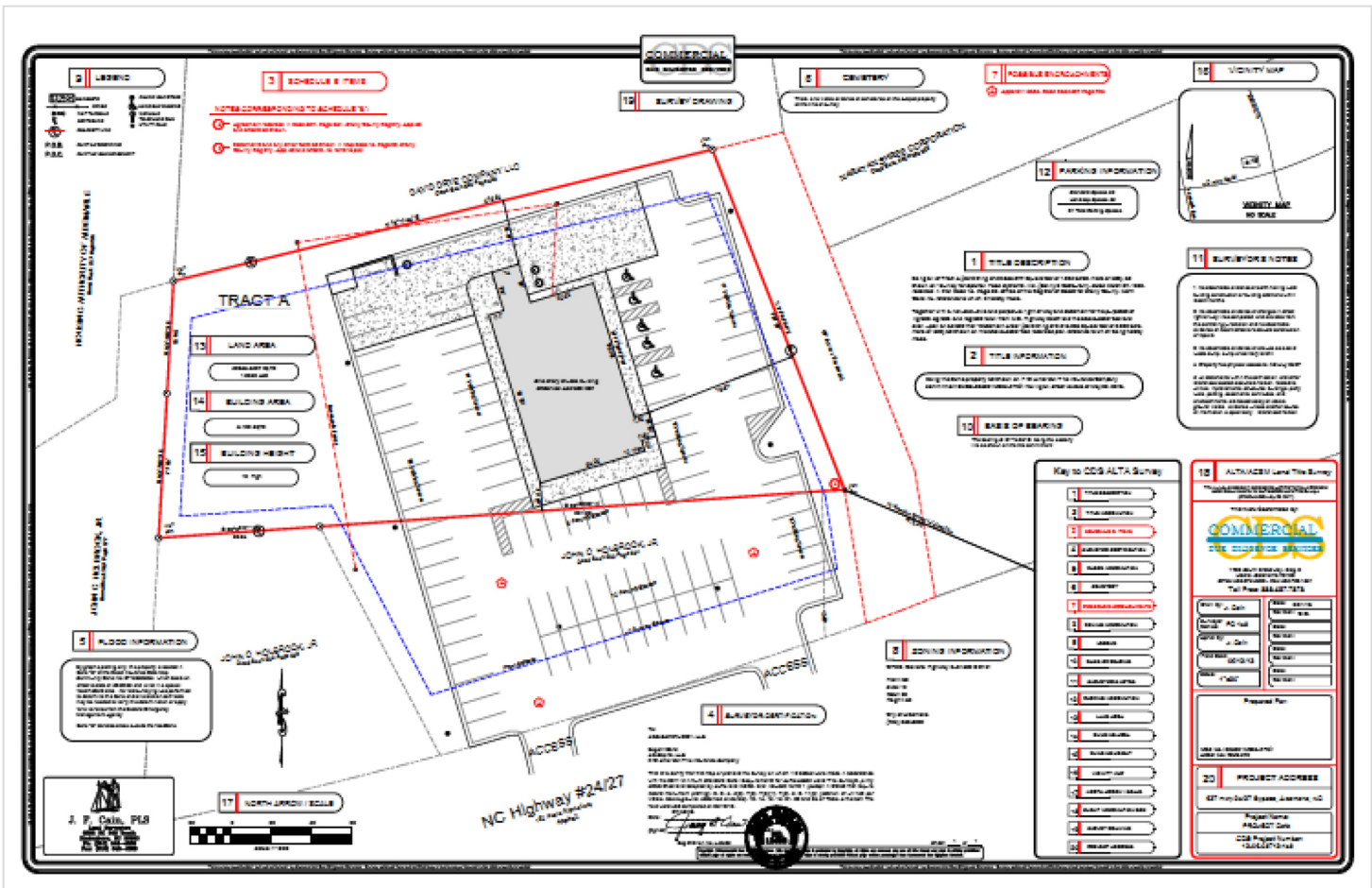
### DEMOGRAPHICS

	1 Mile	3 Miles	5 Miles
Total Households:	905	4,797	8,273
Total Population:	2,252	12,134	21,711
Average HH Income:	\$42,855	\$46,104	\$50,175

# FORMER RESTAURANT

637 NC 24 27 BYPASS E, ALBEMARLE, NC 28001

SURVEY





**Diana Teitsma**  
Senior Vice President  
980.819.0092  
dteitsma@divaris.com



The information contained herein should be considered confidential and remains the sole property of Divaris Real Estate, Inc. at all times. Although every effort has been made to ensure accuracy, no liability will be accepted for any errors or omissions. Disclosure of any information contained herein is prohibited except with the express written permission of Divaris Real Estate, Inc.