

CORDOVA

BUILDING

405 - 114TH AVENUE SE, BELLEVUE

12,885 RSF

AVAILABLE FOR
SUBLEASE NOW

MIKE SCHRECK

Executive Managing Director

206.850.7000

mike.schreck@nmrk.com

NEWMARK



Location

Cordova Building is located just south of Bellevue's central business district, adjacent to the Bellevue Club and 3 major hotels. The Cordova Building offers close proximity to the major freeways: I-405, SR 520 and I-90, the Bellevue Transit Center and the future East Link Light Rail Station.

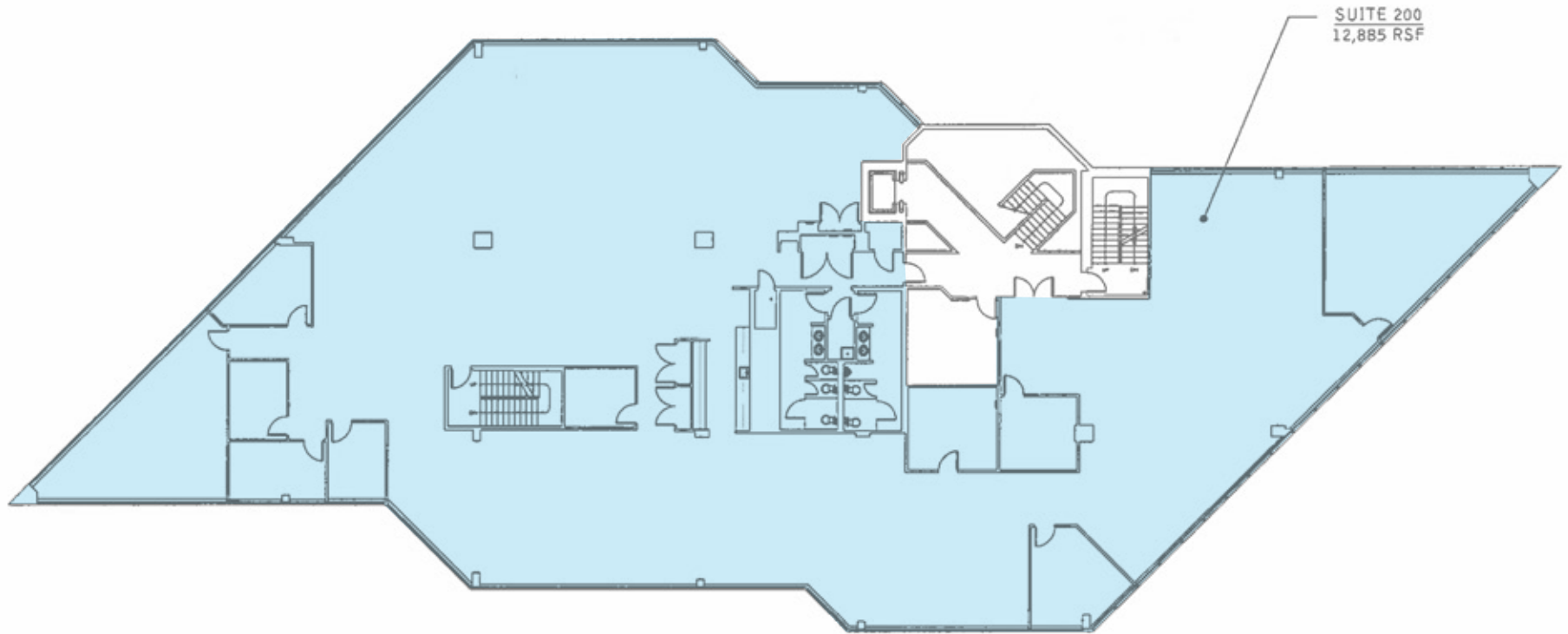


Sublease Features

- Plug and Play 12,885 RSF fully furnished sublease opportunity
- Long Term Sublease: Master lease expires 2/28/2030
- In suite restrooms
- Approximately 7 private offices, 3 oversized conference/training rooms, and approximately 125 wired cubicles
- Immediate access to I-405 via the SE 8th Street exit
- Building signage opportunity facing I-405
- Abundant surface and covered parking; all FREE of charge
- Walking distance to the Bellevue Club, Hilton and Red Lion Hotels



Floor Plan



SUITE 200
12,885 RSF

ASKING RATE:
\$24.00 PSF + NNN

NNN ESTIMATE:
\$13.00 PSF





MIKE SCHRECK

Executive Managing Director

206.850.7000

mike.schreck@nmrk.com

NEWMARK

The information contained herein has been obtained from sources deemed reliable but has not been verified and no guarantee, warranty or representation, either express or implied, is made with respect to such information. Terms of sale or lease and availability are subject to change or withdrawal without notice.