



# BURLINGAME BAY • CENTER

555 & 577 AIRPORT BLVD, BURLINGAME

 **Newmark  
Knight Frank**

DAN MATTEUCCI  
650.358.5276

◆ CRAIG KALINOWSKI  
650.358.5287

◆ JOSH ROWELL  
650.358.5261

 EverWest


# PROJECT HIGHLIGHTS



- New **institutional ownership** - EverWest Real Estate Investors
- 577 Airport Boulevard **common area project improvements** completed in 2019
- **New** spec suites
- Abundance of **amenities** - restaurants and shopping - **within 2-mile radius**
- Walking distance to **hotels**
- **Incredible** hillside and bay **views**
- **Transit shuttle** system to/from BART/Caltrain @ Millbrae Transit Center
- High identity location with **building top signage** opportunity - ±300,000 cars daily
- Full building **headquarters opportunity** at 555 Airport Boulevard - ±120,988 RSF





 **BUILDING TOP  
SIGNAGE OPPORTUNITY**

 **FULL BUILDING  
AVAILABLE:  
±120,988 RSF**




**577 AIRPORT BOULEVARD**

- Suite 440: ±3,449 RSF
- Suite 500: ±19,958 RSF
- Suite 730: ±7,862 RSF\*

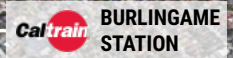
*\*New Spec Suite*

**555 AIRPORT BOULEVARD**

- Floor 1: ±21,066 RSF
- Floor 2: ±24,069 RSF
- Floor 3: ±25,318 RSF
- Floor 4: ±25,289 RSF
- Floor 5: ±25,246 RSF

 **HIGHWAY 101  
±300,000 CARS DAILY**

# LOCATION & AMENITIES



- BROADWAY STREET**
- Behan's Irish Pub
  - Big Joe's Cafe
  - Broadway Grill
  - Broadway Prime
  - il Piccolo Caffè
  - Le Croissant Cafe
  - Preston's Ice Cream
  - Que SeRaw SeRaw
  - Ristorante Rocca
  - Royal Donut Cafe
  - Sahaara Mediterranean
  - Shabu House
  - Sidewalk Juice
  - Sesame
  - Starbucks
  - Village Host Pizza
  - Yaprak Doner
  - Young Can Wok Chinese

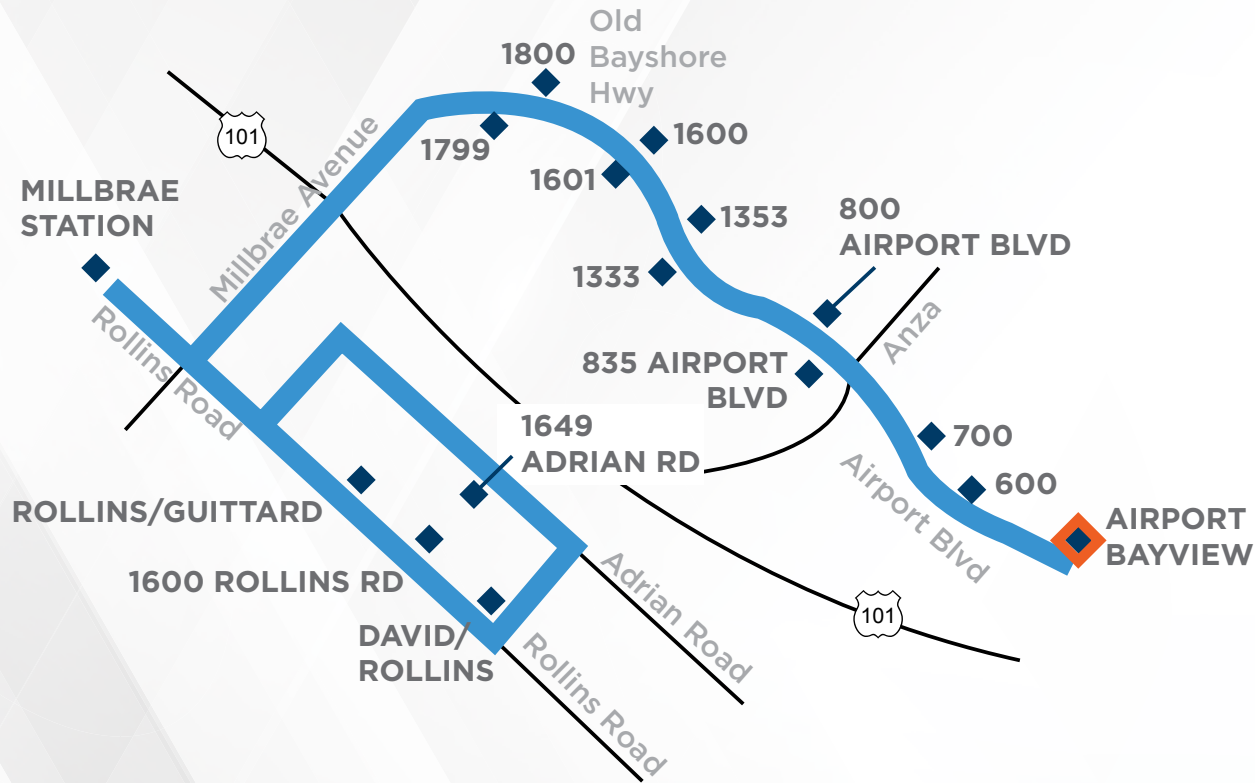
- BURLINGAME AVE/DOWNTOWN**
- Alana's Cafe
  - Bare Bowls
  - Barracuda Japanese
  - Blue Line Pizza
  - Cafe on Primrose
  - Copenhagen Bakery
  - Crepevine
  - Farm & Vine Bistro
  - Flights
  - Five Guys
  - La Corneta Taqueria
  - Lemonade
  - Limon Rotisserie
  - Panda Express
  - Peet's Coffee
  - Philz Coffee
  - Pizza My Heart
  - Pizzeria Delfina
  - RASA Indian
  - Sapore Italian
  - Stacks
  - Starbucks
  - Stella Alpina Osteria
  - Steelhead Brewing Co
  - Tpumps
  - Urban Bistro

- Cafe Royale
- New England Lobster Market
- Hangar Steak
- Starbucks
- Elephant Bar
- Benihana
- Grand Harbor
- Mr. Teriyaki
- New World Cafe
- Max's Opera Cafe
- Tsai Mandarin
- Fattoria e Mare

- Kincaid's
- KitchenTown Cafe
- POPLAR CREEK GOLF COURSE
- Hot Wok Bistro
- Nini's Coffee Shop
- Wingstop
- Starbucks
- Celia's

DESTINATION	DISTANCE	DRIVE TIME
DOWNTOWN BURLINGAME	2.8 MILES	9 MINUTES
BROADWAY STREET	1.9 MILES	7 MINUTES
SFO	3.3 MILES	6 MINUTES
BART	3.3 MILES	8 MINUTES

# MILLBRAE STATION TRANSIT CENTER SHUTTLE SCHEDULE



## SHUTTLE DEPARTS MILLBRAE STATION (AM)

Run Numbers	Bus A1	Bus B1	Bus A2	Bus B2	Bus A3	Bus B3	Bus A4	Bus B4
Shuttle Departs Millbrae Station	7:00	7:33	7:47	8:12	8:27	8:46	9:01	9:20
<b>SHUTTLE ARRIVES AT EMPLOYERS</b>								
Airport/Bayview	7:23	7:56	8:10	8:35	8:50	9:09	9:24	9:43

## SHUTTLE DEPARTS EMPLOYERS (PM)

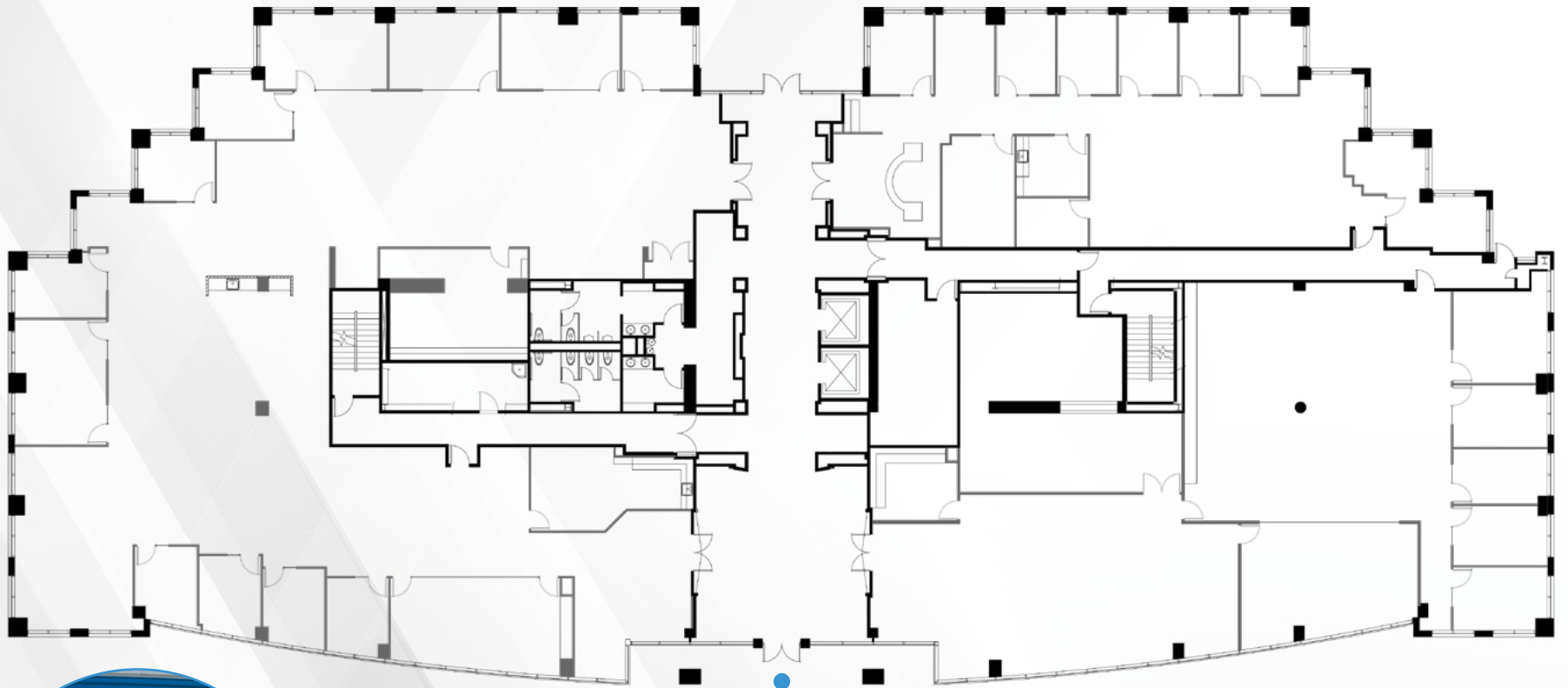
Run Numbers	Bus B1	Bus A1	Bus B2	Bus A2	Bus B3	Bus A3	Bus B4	Bus A4	Bus B5
Airport/Bayview	3:52	4:12	4:32	4:52	5:12	5:32	5:52	6:12	6:32
<b>SHUTTLE ARRIVES AT MILLBRAE STATION</b>									
Shuttle Arrives Millbrae Station	4:15	4:35	4:55	5:15	5:35	5:55	6:15	6:35	6:55

# GALLERY



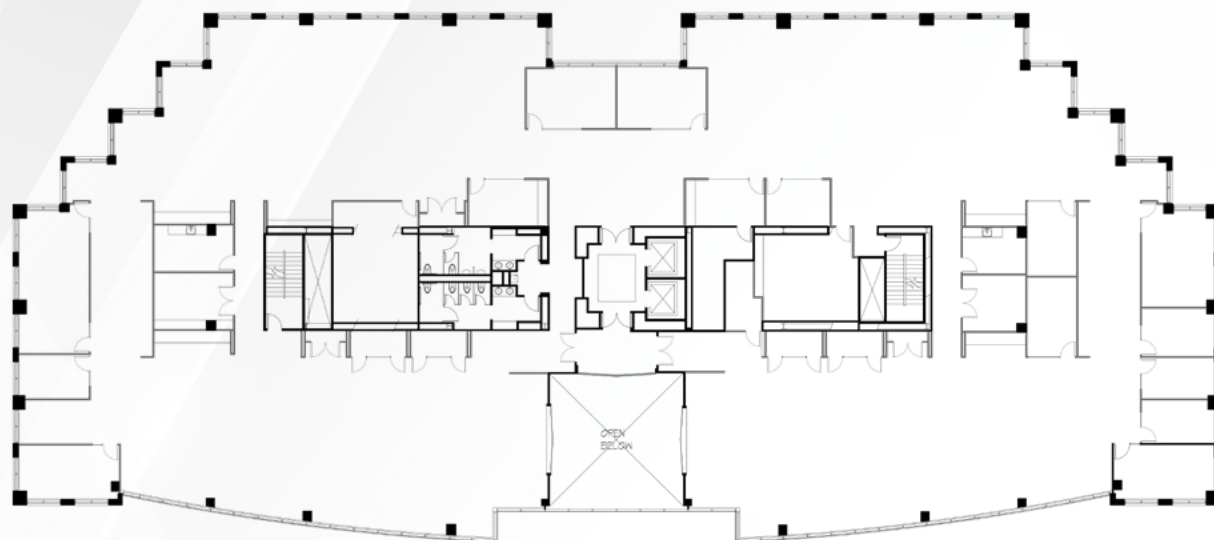
# 555 AIRPORT | Floor 1

±21,066 RSF



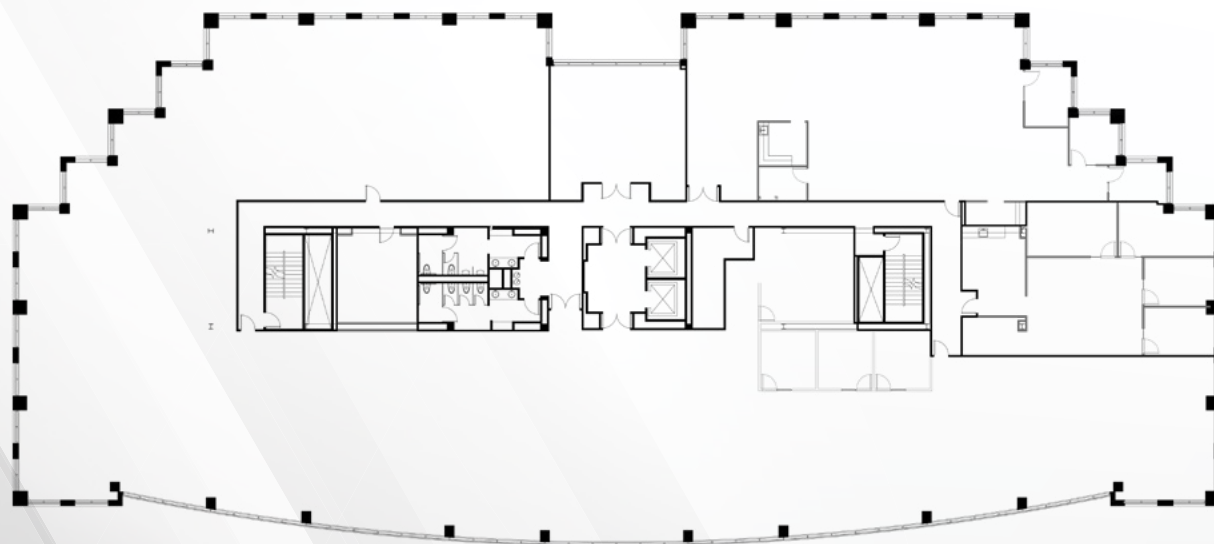
# 555 AIRPORT | Floor 2

±24,069 RSF



# 555 AIRPORT | Floor 3

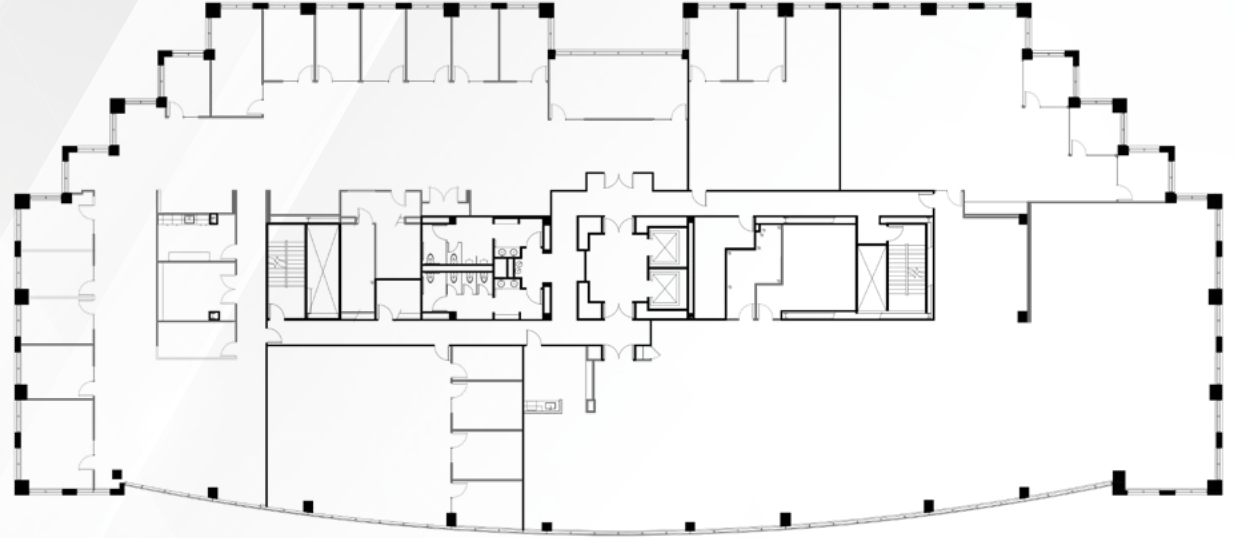
±25,318 RSF





# 555 AIRPORT | Floor 4

±25,289 RSF



# 555 AIRPORT | Floor 5

±25,246 RSF

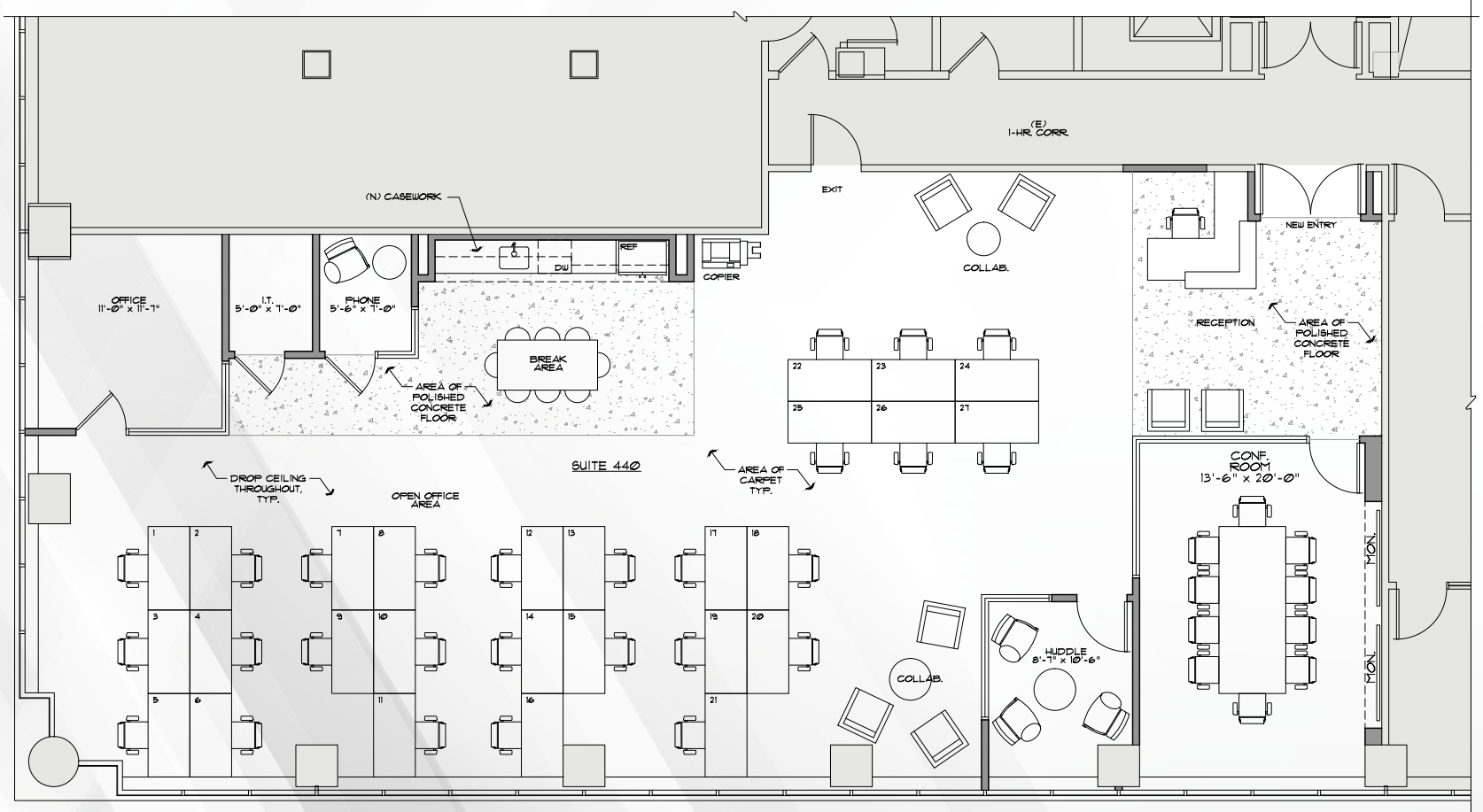


# 577 AIRPORT | Suite 440



## ±3,449 SF

- Reception
- 1 Conference Room
- 1 Private Office
- 1 Huddle Room
- 1 Phone Room
- 2 Collaboration Areas
- Open Area for 27 Workstations
- Break Area
- IT Room



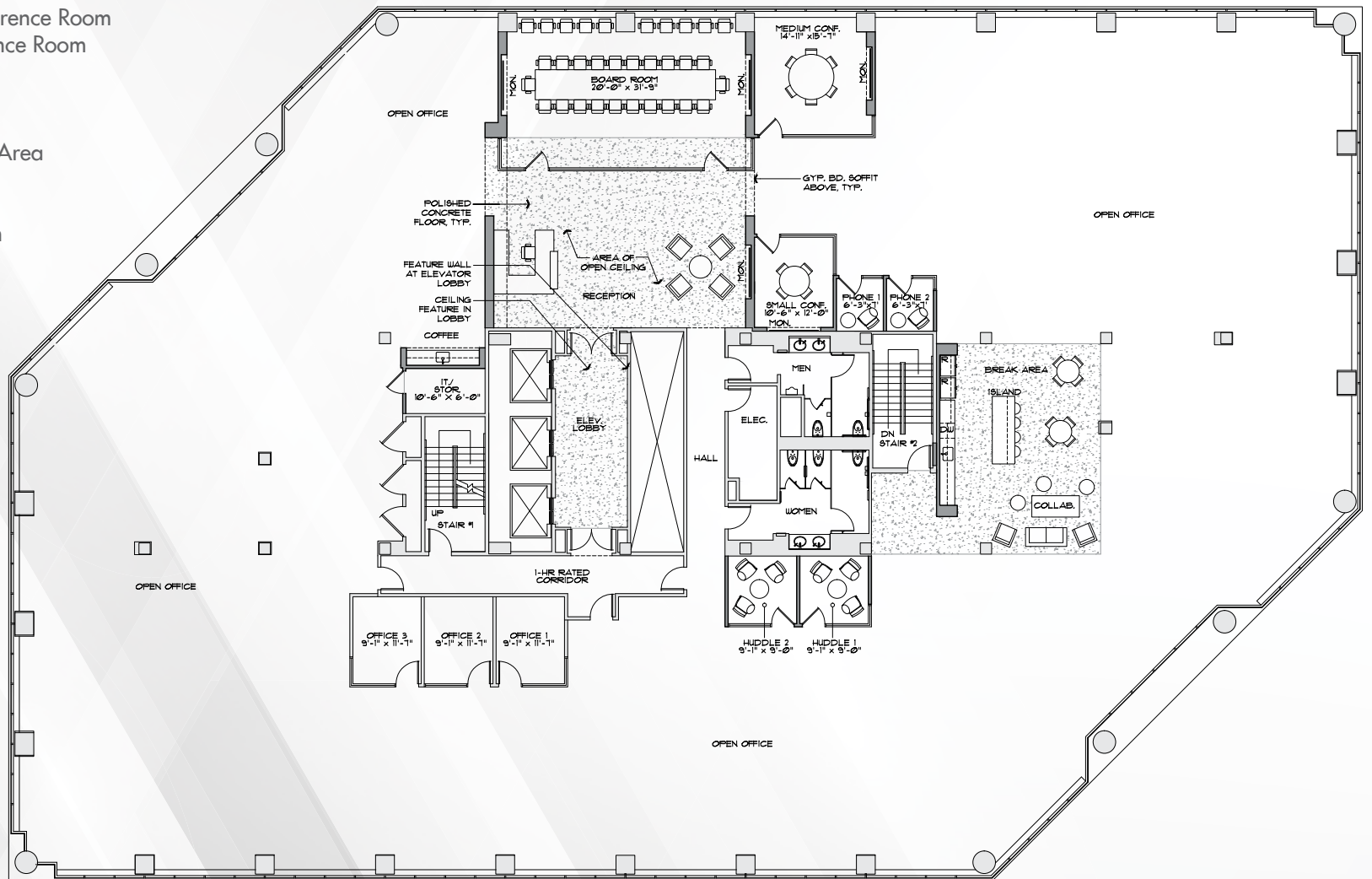
\* Hypothetical Space Plan

# 577 AIRPORT | Suite 500



## ±19,958 SF

- Reception
- 1 Board Room
- 1 Medium Conference Room
- 1 Small Conference Room
- 3 Private Offices
- 2 Huddle Rooms
- 2 Phone Rooms
- 1 Collaboration Area
- Break Area
- Coffee Station
- IT/Storage Room



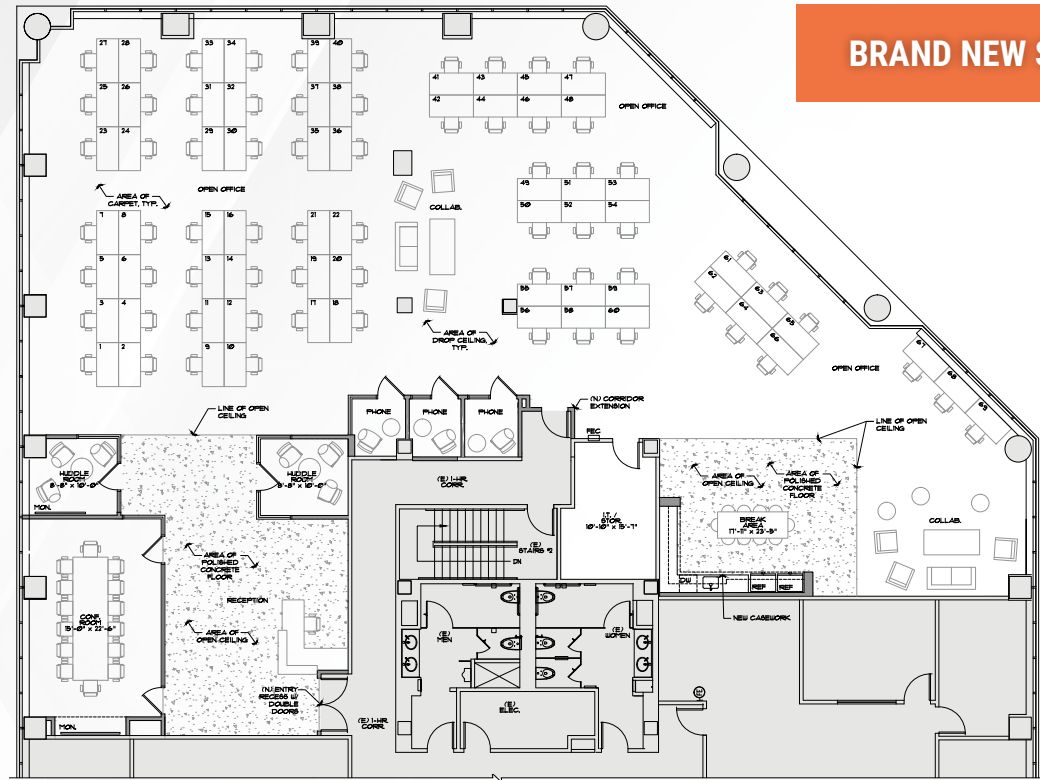
\* Hypothetical Space Plan

# 577 AIRPORT | Suite 730



±7,862 SF

- Reception
- 1 Conference Room
- 2 Huddle Rooms
- 3 Phone Rooms
- 2 Collaboration Areas
- Open Area for 69 Workstations
- Break Area
- IT/Storage



**BRAND NEW SPEC SUITE**

\* Hypothetical Space Plan





 **BURLINGAME**  
BAY • CENTER

**DAN MATTEUCCI**  
EXECUTIVE MANAGING DIRECTOR  
650.358.5276  
dmatteucci@ngkf.com  
CA RE License #01848064

**CRAIG KALINOWSKI**  
EXECUTIVE MANAGING DIRECTOR  
650.358.5287  
ckalinowski@ngkf.com  
CA RE License #01260870

**JOSH ROWELL**  
EXECUTIVE VICE PRESIDENT  
650.358.5261  
jrowell@ngkf.com  
CA RE License #01236434



2950 SOUTH DELAWARE STREET, SUITE 125, SAN MATEO, CA 94403

The distributor of this communication is performing acts for which a real estate license is required. The information contained herein has been obtained from sources deemed reliable but has not been verified and no guarantee, warranty or representation, either express or implied, is made with respect to such information. Terms of sale or lease and availability are subject to change or withdrawal without notice. 17-0817 • 05/20