



MENLO PARK OFFICE/R&D

## ±5,278 RSF Office/R&D Space

### PROPERTY HIGHLIGHTS

- 100% HVAC
- Great Tech Open Office Environment
- Growth Opportunities Possible
- Immediate Access to Highway 101 & Dumbarton Bridge
- Proximity to Downtown Amenities (Attached)
- 3/1000 Parking
- Grade Level Loading
- 18' 6" Clear Height
- Flexible Space for Office, R&D, or Life Science Tenants
- Power: 1000 amps 120/240 Volt 3 phase
- Available 2/1/2020
- Call to Tour



#### **Steve Bouret**

Executive Managing Director  
+1 650 533 7300  
steve.bouret@cushwake.com  
LIC #01304628

#### **Chris Blom**

Senior Associate  
+1 650 931 2210  
chris.blom@cushwake.com  
LIC #02031205

1350 Bayshore Hwy., Suite 900  
Burlingame, CA  
main +1 650 347 3700  
fax +1 650 347 4307  
**cushmanwakefield.com**



**CUSHMAN &  
WAKEFIELD**

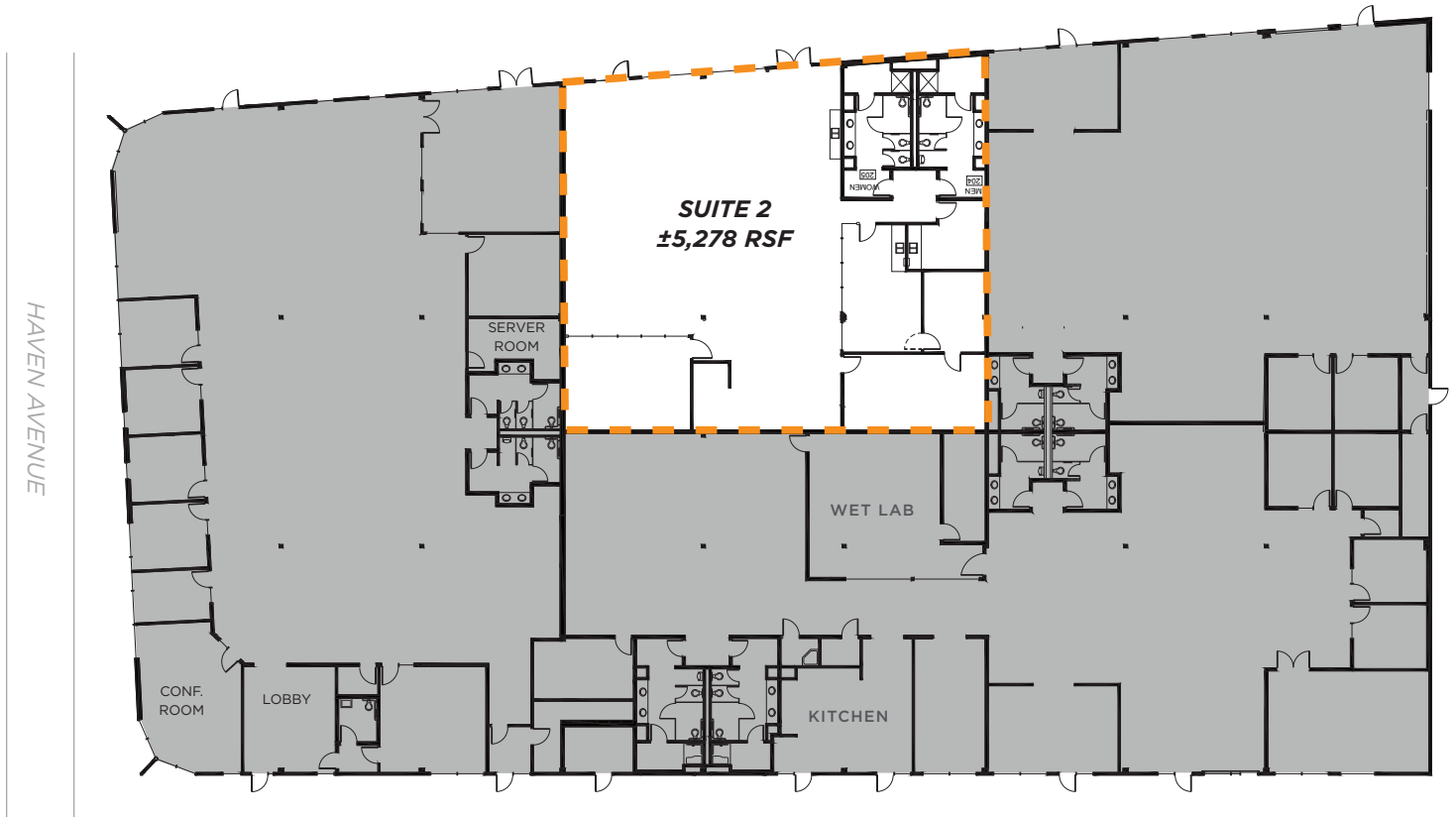
FOR LEASE

**3565 Haven Avenue**

Menlo Park, CA

**FLOOR PLAN**

±5,278 RSF - Suite 2



**Steve Bouret**

Executive Managing Director  
+1 650 533 7300  
steve.bouret@cushwake.com  
LIC #01304628

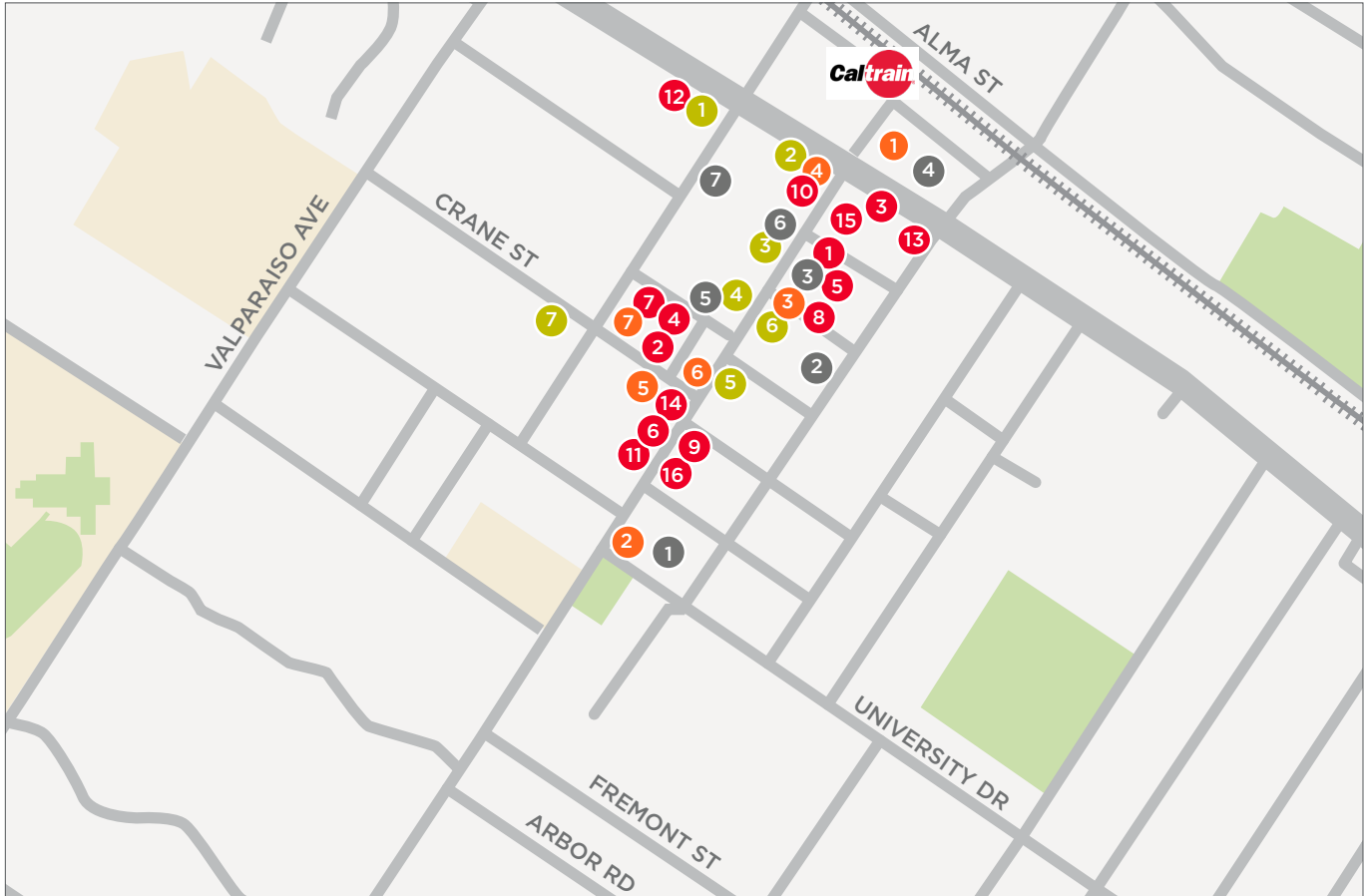
**Chris Blom**

Senior Associate  
+1 650 931 2210  
chris.blom@cushwake.com  
LIC #02031205

1350 Bayshore Hwy., Suite 900  
Burlingame, CA  
main +1 650 347 3700  
fax +1 650 347 4307  
**cushmanwakefield.com**



**DOWNTOWN MENLO PARK AMENITIES**



**RESTAURANTS**

- 1 Left Bank
- 2 Carpaccio
- 3 Trellis Restaurant
- 4 Shiok Singapore Kitchen
- 5 Bistro Vida
- 6 Angelo Mio
- 7 Gerry's Cakes
- 8 Una Mas
- 9 Subway
- 10 Quiznos
- 11 Amici's

- 12 Round Table Pizza
- 13 Applewood Pizza
- 14 Miyo Yogurt
- 15 Cold Stone Creamery
- 16 Baskin Robbins

**BANKS**

- 1 First Republic Bank
- 2 U.S. Bank Branch
- 3 Union Bank
- 4 Chase Bank
- 5 Wells Fargo Bank

- 6 Bank of the West
- 7 Comerica Bank

**RETAIL**

- 1 Draeger's
- 2 Trader Joe's
- 3 Walgreens
- 4 Kepler's
- 5 Angela
- 6 Cheeky Monkey
- 7 US Post Office

**COFFEE SHOP**

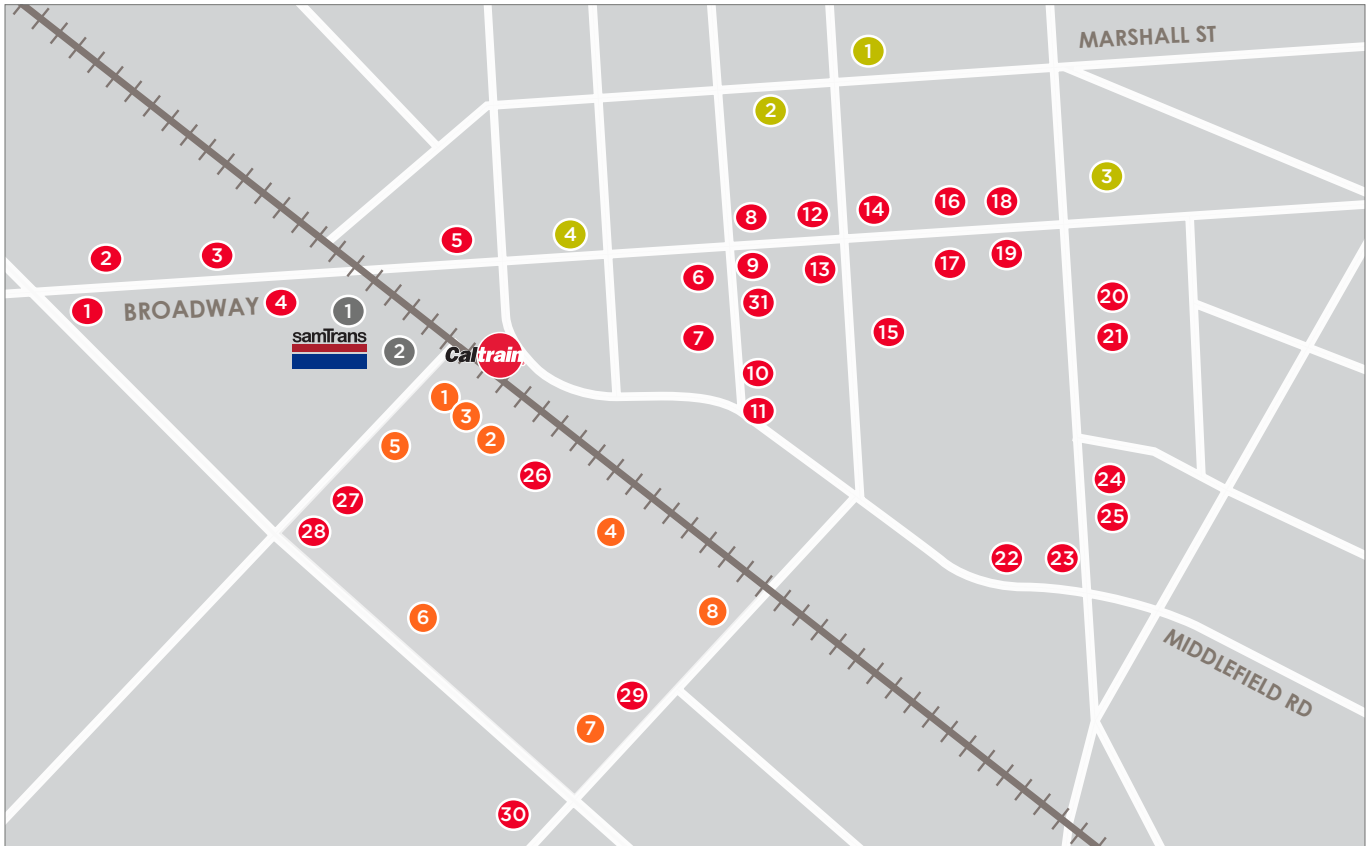
- 1 Café Borrone
- 2 Peet's Coffee
- 3 Starbucks
- 4 Stacks
- 5 Mademoiselle Colette
- 6 Bagel Street Café
- 7 Coffeebar Menlo Park

**Steve Bouret**  
 Executive Managing Director  
 +1 650 533 7300  
 steve.bouret@cushwake.com  
 LIC #01304628

**Chris Blom**  
 Senior Associate  
 +1 650 931 2210  
 chris.blom@cushwake.com  
 LIC #02031205

1350 Bayshore Hwy., Suite 900  
 Burlingame, CA  
 main +1 650 347 3700  
 fax +1 650 347 4307  
**cushmanwakefield.com**

## DOWNTOWN REDWOOD CITY AMENITIES



### RESTAURANTS

- 1 Ike's
- 2 The City Pub
- 3 Peet's
- 4 Gourmet Haus
- 5 The Sandwich Spot
- 6 Quinto Sol
- 7 Cafe LaTatine
- 8 Sakura
- 9 Five Guys Burgers
- 10 Chipotle
- 11 Portabello Grill
- 12 Philz Coffee
- 13 Old Spaghetti Factory

- 14 Margaritas
- 15 Pasha Mediterranean
- 16 LV MAR
- 17 RocknWraps and Kabobs
- 18 Vesta
- 19 The Courthouse 2021
- 20 Martin's West
- 21 Angelica's Bistro
- 22 Donato
- 23 Milagros
- 24 Patty Shack
- 25 The Striped Pig
- 26 Noah's Bagels
- 27 Jamba Juice

- 28 Teatime
- 29 Habit Burger Grill
- 30 Whole Foods Market
- 31 Pizza my heart

### BANKS

- 1 Union Bank
- 2 Bank of America
- 3 Wells Fargo
- 4 Chase

### TRANSPORTATION

- 1 SamTrans Bus Station
- 2 CalTrain Sequoia Station

### RETAIL

- 1 CVS Pharmacy
- 2 Super Cuts
- 3 Starbuck's
- 4 Safeway
- 5 See's Candy
- 6 Barnes & Noble
- 7 Old Navy
- 8 Pier One

**Steve Bouret**  
 Executive Managing Director  
 +1 650 533 7300  
 steve.bouret@cushwake.com  
 LIC #01304628

**Chris Blom**  
 Senior Associate  
 +1 650 931 2210  
 chris.blom@cushwake.com  
 LIC #02031205

1350 Bayshore Hwy., Suite 900  
 Burlingame, CA  
 main +1 650 347 3700  
 fax +1 650 347 4307  
**cushmanwakefield.com**