

# 650 Sixth Avenue



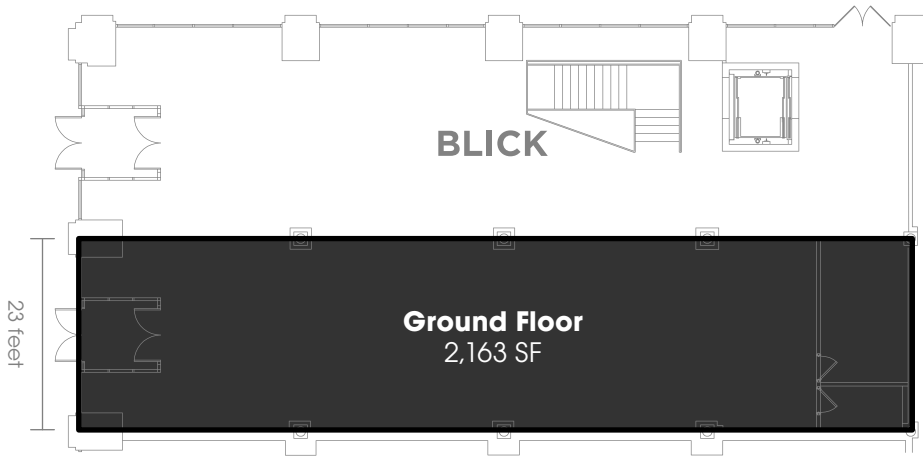
HUBB NYC

Chelsea  
New York



W 20th Street

Sixth Avenue



### Size

Ground Floor: 2,163 SF

### Possession

Immediate

### Comments

Newly white boxed, column free space.

15' ceiling height and 23' of frontage on 6th Avenue.

53,739 employees within 5 minute walk.

10,121 residents within 5 minute walk.

Over 21 million annual ridership counts between 14th and 23rd street subways.

### The Building

Now known as The Cammeyer, 650 Sixth Ave was once home to the world's largest shoe store on the historic Ladies Mile District. In 2012, the building was converted to 67 loft condominium units.

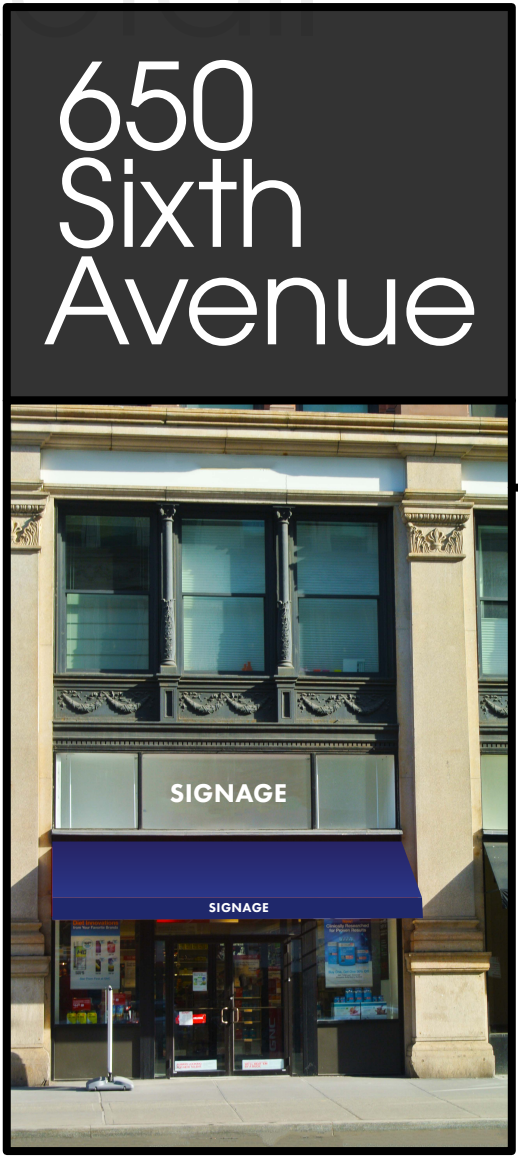
### Neighboring Tenants



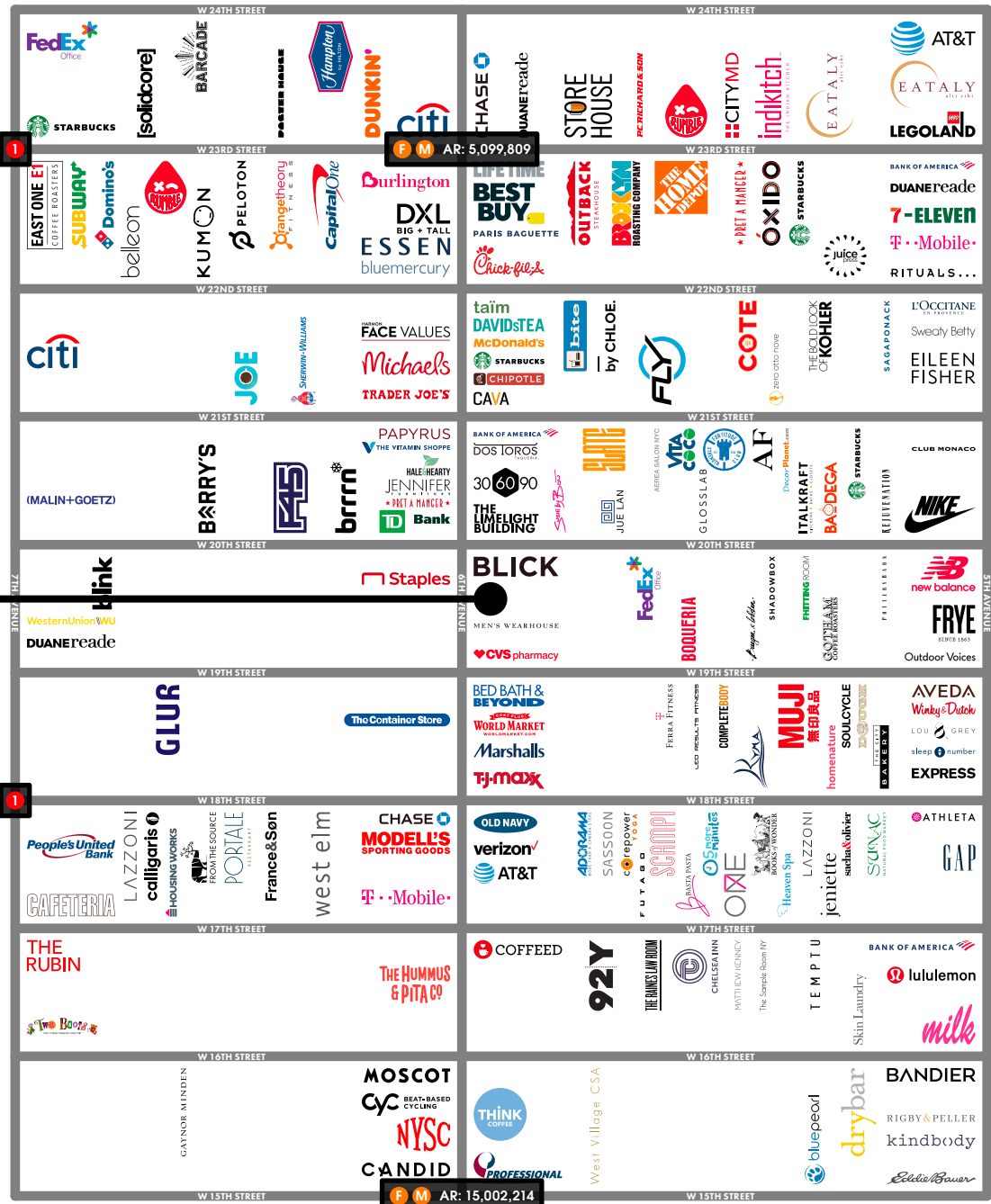
Interior Photos



# Chelsea Retail



## 650 Sixth Avenue



# 650 Sixth Avenue

**Joe Mastromonaco**

212.687.2400

[jmastromonaco@dartco.com](mailto:jmastromonaco@dartco.com)

**Fritz Kemerling**

212.687.2422

[fritz@dartco.com](mailto:fritz@dartco.com)

**Evan Clements**

212.687.2431

[eclements@dartco.com](mailto:eclements@dartco.com)

---

**270 Lafayette Street | Suite 806**

New York, New York 10012

212.687.2400

[www.dartco.com](http://www.dartco.com)



**HUBBNYC**

HUBBNYC is a privately held and well-capitalized New York City real estate operating company. Since its inception in 2011, the company has acquired 51 residential, retail and mixed-use properties in New York City. We are long term owners with over 100 retail storefronts under management. We have an in-house professional management team that is dedicated to a tenant-centered service model to ensure the best outcome for our retail tenants.