



FOR LEASE

Mendota Office Center I

1250 Northland Drive
Mendota Heights, MN



[HOME](#)

[HIGHLIGHTS](#)

[AVAILABLE](#)

[LOCATION](#)

For more information, please contact:

Dan Gleason
+1 952 893 8884
dan.gleason@cushwake.com

Dan Nechanicky
+1 952 820 8765
dan.nechanicky@cushwake.com

Cushman & Wakefield
3500 American Blvd W Suite 200
Minneapolis, MN 55431
cushmanwakefield.com

Mendota Office Center I

1250 Northland Drive, Mendota Heights, MN



HOME

HIGHLIGHTS

AVAILABLE

LOCATION

Property Highlights

- Extensive amenity package including underground parking, storage space, vending area, fitness center and showers with lockers
- Abundant parking with 6 stalls per 1,000 square feet
- Established business park environment near high-growth professional and technical labor force base
- Excellent access and visibility off I-494 and Pilot Knob Road

BUILDING INFORMATION

BUILDING SIZE 60,000 sq. ft.

YEAR BUILT 1998

CLASS B

FLOORS 2

PARKING RATIO 6/1,000

LEASE RATE \$13.00 per sq. ft.

2019 ESTIMATED TAX & OPER. EXP. \$10.52 per sq. ft.



For more information, please contact:

Dan Gleason
+1 952 893 8884
dan.gleason@cushwake.com

Dan Nechanicky
+1 952 820 8765
dan.nechanicky@cushwake.com

Cushman & Wakefield
3500 American Blvd W Suite 200
Minneapolis, MN 55431
cushmanwakefield.com

Mendota Office Center I

1250 Northland Drive, Mendota Heights, MN



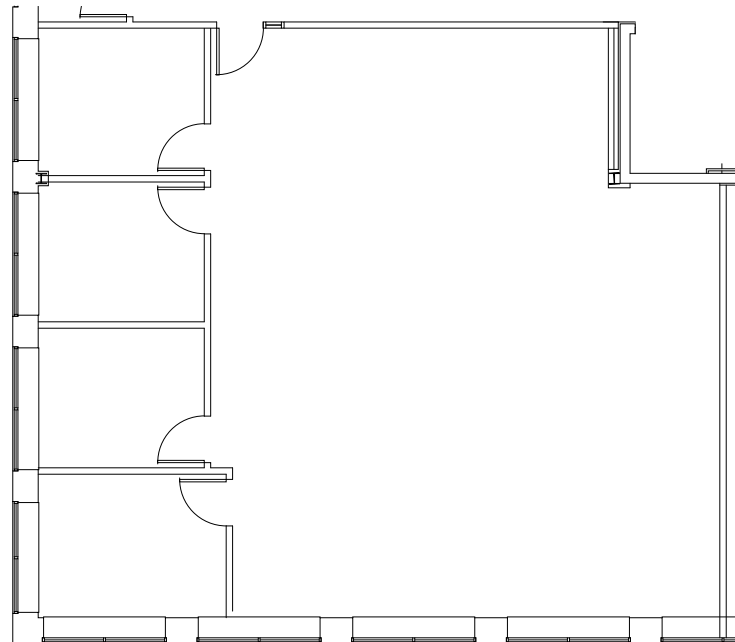
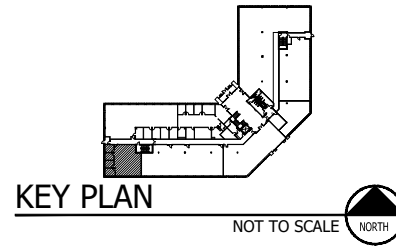
HOME

HIGHLIGHTS

AVAILABLE

LOCATION

Suite 110
2,006 RSF



For more information, please contact:

Dan Gleason
+1 952 893 8884
dan.gleason@cushwake.com

Dan Nechanicky
+1 952 820 8765
dan.nechanicky@cushwake.com

Cushman & Wakefield
3500 American Blvd W Suite 200
Minneapolis, MN 55431
cushmanwakefield.com

Mendota Office Center I

1250 Northland Drive, Mendota Heights, MN



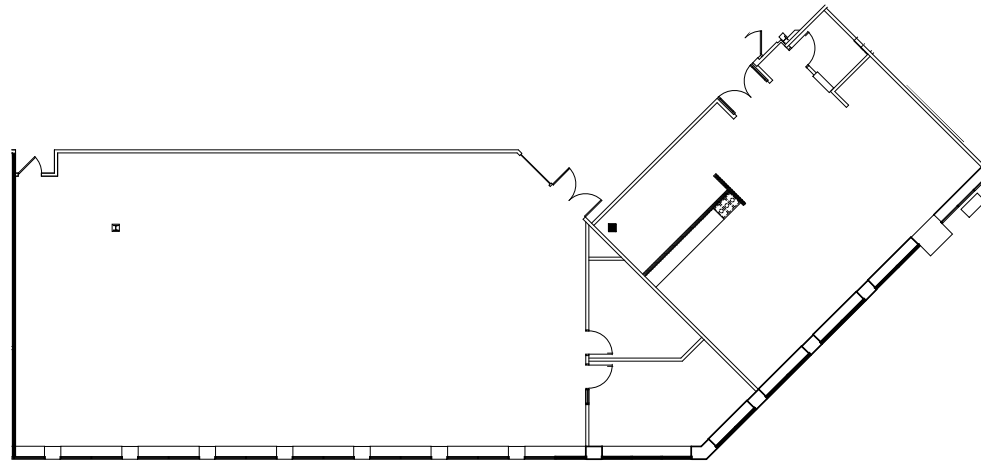
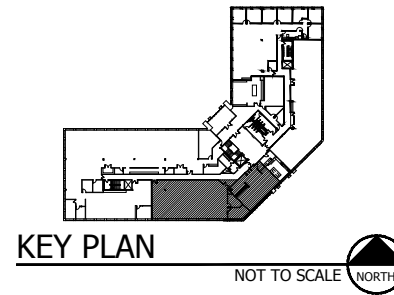
HOME

HIGHLIGHTS

AVAILABLE

LOCATION

Suite 225
5,437 RSF



For more information, please contact:

Dan Gleason
+1 952 893 8884
dan.gleason@cushwake.com

Dan Nechanicky
+1 952 820 8765
dan.nechanicky@cushwake.com

Cushman & Wakefield
3500 American Blvd W Suite 200
Minneapolis, MN 55431
cushmanwakefield.com

Mendota Office Center I

1250 Northland Drive, Mendota Heights, MN



HOME

HIGHLIGHTS

AVAILABLE

LOCATION



**Mendota Office Center I
1250 Northland Dr**

For more information, please contact:

Dan Gleason
+1 952 893 8884
dan.gleason@cushwake.com

Dan Nechanicky
+1 952 820 8765
dan.nechanicky@cushwake.com

Cushman & Wakefield
3500 American Blvd W Suite 200
Minneapolis, MN 55431
cushmanwakefield.com