

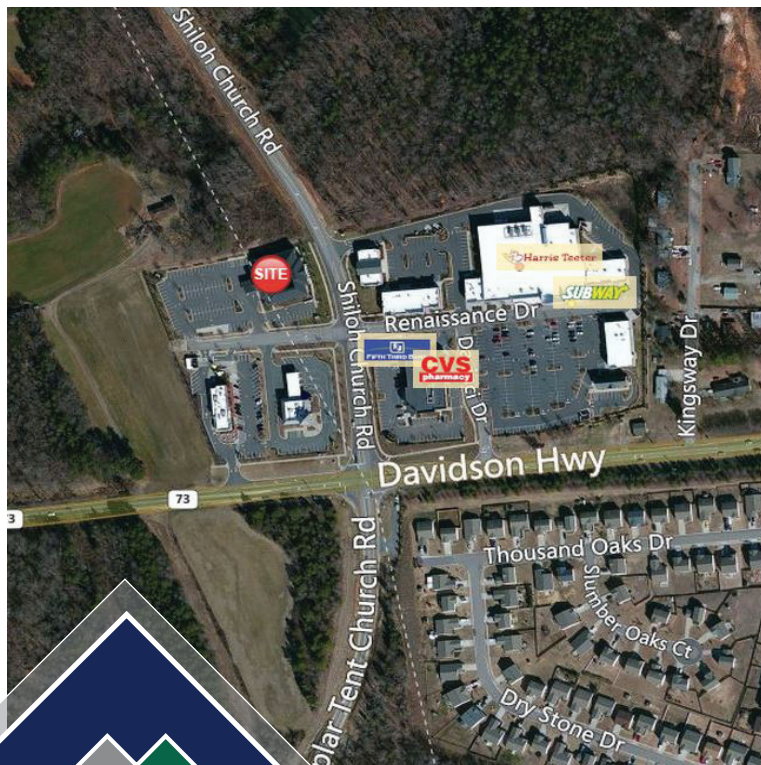
# 2101 Shiloh Road

Davidson, NC 28036 CMC-Northeast

For  
Lease



## Medical Office Space- Available Immediately



### FEATURES

- ▶ Located off of Hwy 73 and Shiloh Church Road in Davidson
- ▶ Anchored by Carolinas HealthCare System
- ▶ Covered patient drop off
- ▶ 2-story building for use as medical or general office
- ▶ Tenants include:
  - Suburban Pediatrics
  - Renaissance Women's Health

### Terms and Conditions:

- ▶ Rental Rate: \$23.50/RSF Full Service
- ▶ Available Space: Suite 102 2,563 RSF Vacant



Marshall Williamson  
704.714.7626  
marshall.williamson@lincolnharris.com

Faith Lampkins  
704.714.7660  
faith.lampkins@lincolnharris.com

A Promise of Value

lincolnharris.com

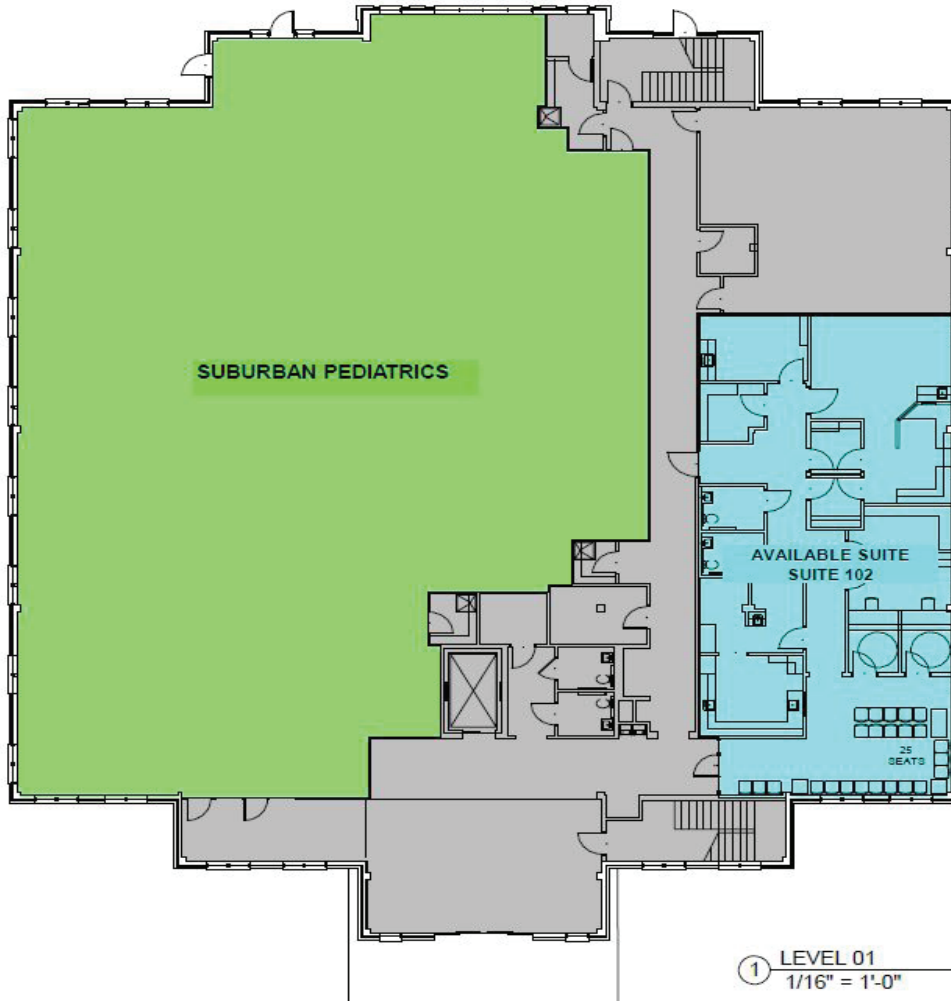
# 2101 Shiloh Road

Davidson, NC 28036 CMC-Northeast

For  
Lease

## AVAILABLE SPACE

SUITE	FLOOR	
102	1st	2,563



**Marshall Williamson**  
704.714.7626  
marshall.williamson@lincolnharris.com

**Faith Lampkins**  
704.714.7660  
faith.lampkins@lincolnharris.com

A Promise of Value  
lincolnharris.com



# 2101 Shiloh Road

Davidson, NC 28036 CMC-Northeast

For Lease

## INTERIOR



LINCOLN  
HARRIS

**Marshall Williamson**  
704.714.7626  
[marshall.williamson@lincolnharris.com](mailto:marshall.williamson@lincolnharris.com)

**Faith Lampkins**  
704.714.7660  
[faith.lampkins@lincolnharris.com](mailto:faith.lampkins@lincolnharris.com)

A Promise of Value  
[lincolnharris.com](http://lincolnharris.com)