



# CitySet

STAY ♦ PLAY ♦ SHOP ♦ DINE

SEC COLORADO BOULEVARD & CHERRY CREEK DRIVE SOUTH, GLENDALE, COLORADO 80206

**4,794,000 SF of Office and 2,605,000 SF of Retail within One Mile**



### Demographics

	1 Mile	2 Miles	3 Miles
Population:	21,086	<b>78,688</b>	199,441
Daytime Pop:	22,325	<b>69,006</b>	130,387
Households:	11,913	<b>39,947</b>	106,381
Avg. HH Income:	\$102,201	\$103,289	\$83,141

### Traffic Counts

Colorado Blvd n/o Cherry Creek Dr	52,326 VPD
Colorado Blvd s/o Cherry Creek Dr	62,060 VPD
Cherry Creek Dr w/o Colorado Blvd	20,764 VPD
Cherry Creek Dr e/o Colorado Blvd	16,061 VPD

**CitySet Restaurant & Entertainment District can accommodate...  
Sit Down Restaurants, Bar & Entertainment, Small Shop Space and QSR**

- ♦ Construction is Complete!
- ♦ Abundant Surface & Underground Parking
- ♦ 345 Hotel Rooms Located On-Site
- ♦ Hilton Garden Inn & Residence Inn Now Open

**Best 2 Mile Demographics in Colorado (69,006 Employees & 78,688 Population)**



FOR FURTHER INFORMATION CONTACT:



**SCOTT CROSBIE**  
720-287-6869  
[SCROSBIE@CREGINC.COM](mailto:SCROSBIE@CREGINC.COM)

**ANDY BUETTNER**  
720-287-6867  
[ANDY@CREGINC.COM](mailto:ANDY@CREGINC.COM)

**SCOTT STEPUTIS**  
720-287-6868  
[STEP@CREGINC.COM](mailto:STEP@CREGINC.COM)



**SCOTT CROSBIE**  
720-287-6869  
[SCROSBIE@CREGINC.COM](mailto:SCROSBIE@CREGINC.COM)

**ANDY BUETTNER**  
720-287-6867  
[ANDY@CREGINC.COM](mailto:ANDY@CREGINC.COM)

**SCOTT STEPUTIS**  
720-287-6868  
[STEP@CREGINC.COM](mailto:STEP@CREGINC.COM)





# CitySet

STAY • PLAY • SHOP • DINE... SEC COLORADO BLVD & CHERRY CREEK DR SOUTH, GLENDALE



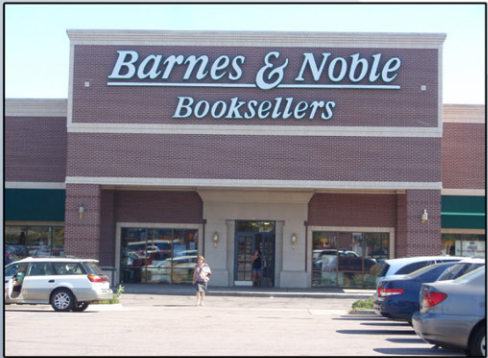
125,415 SF of Office



210 Existing Hotel Rooms



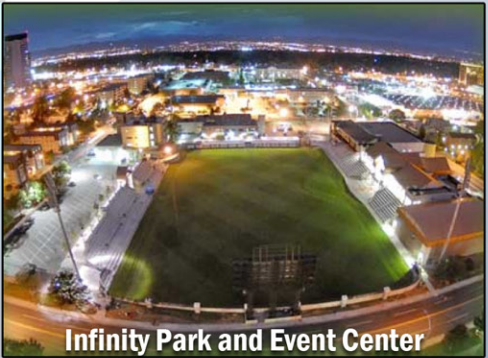
560,000 SF of Office



313,959 SF of Office



288 Unit Residential Tower



Infinity Park and Event Center

The information contained in this brochure was compiled from reliable sources, however Crosbie Real Estate Group, LLC does not warrant nor guarantee the accuracy of the representations herein. Crosbie Real Estate Group, LLC and its broker associates, as listed, are representing the Landlord/Seller of this property. Different brokerage relationships exist.