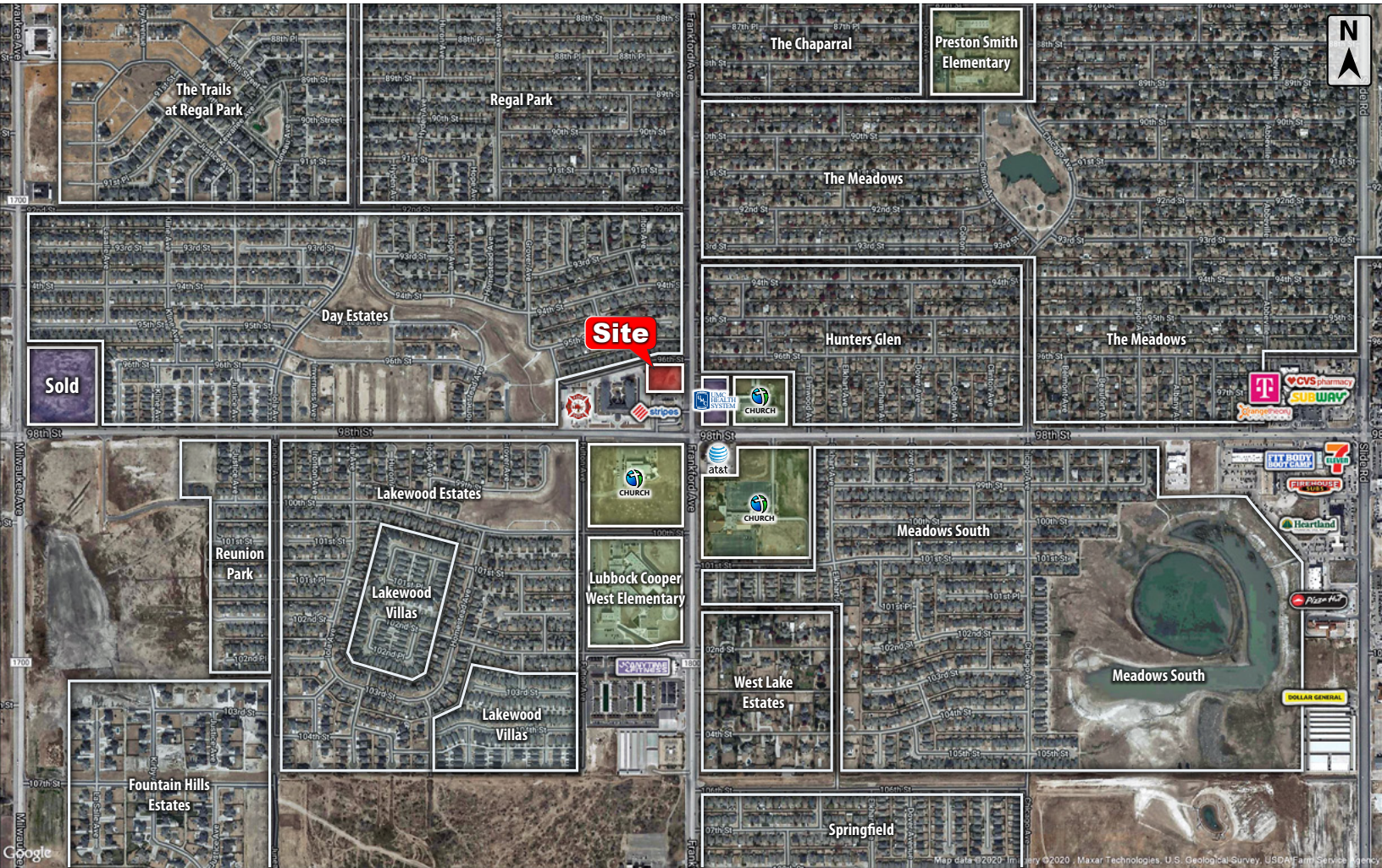




# 9601 FRANKFORD AVENUE

Lubbock, TX 79424

LAND



## QUICK FACTS



PURCHASE PRICE  
**\$12.50 per SF**



TOTAL ACREAGE  
**1.68 AC**



ZONING  
**Commercial**

CBCWORLDWIDE.COM

Beau Tucker, CCIM  
806.470.3944  
BTucker@CBCWorldwide.com  
CBCLandMan.com

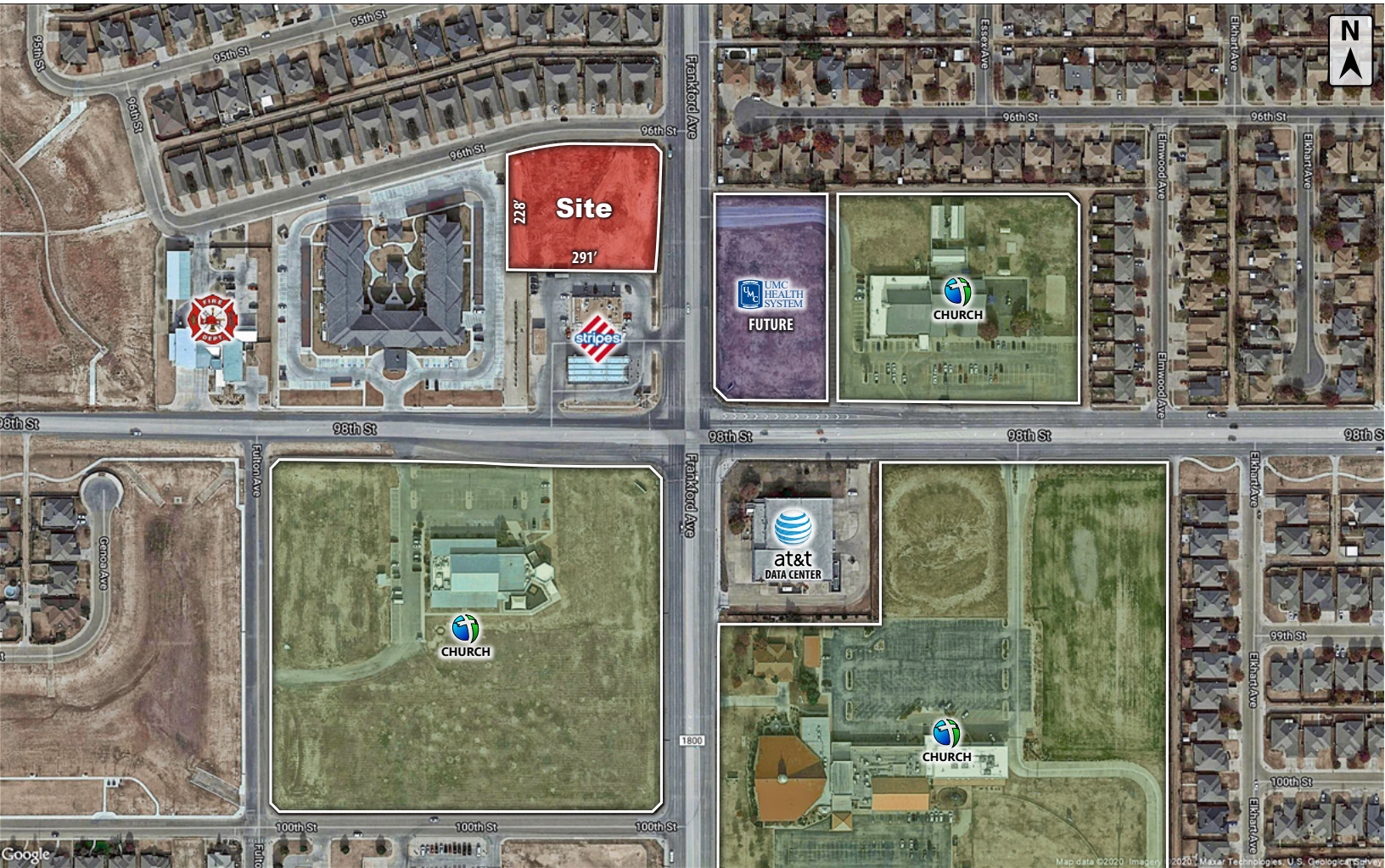


CAPITAL ADVISORS





## Trade Area & Information



## LOCATION

Located at the southwest corner of 96th Street and Frankford Avenue.

## DESCRIPTION

This nice development tract of land is the last known confirmed commercial frontage in the area. This intersection is completed underserved for the amount of rooftops in the immediate area and the traffic counts along both 98th Street and Frankford Avenue. This tract is ready for commercial development.

Property is not in the floodplain.

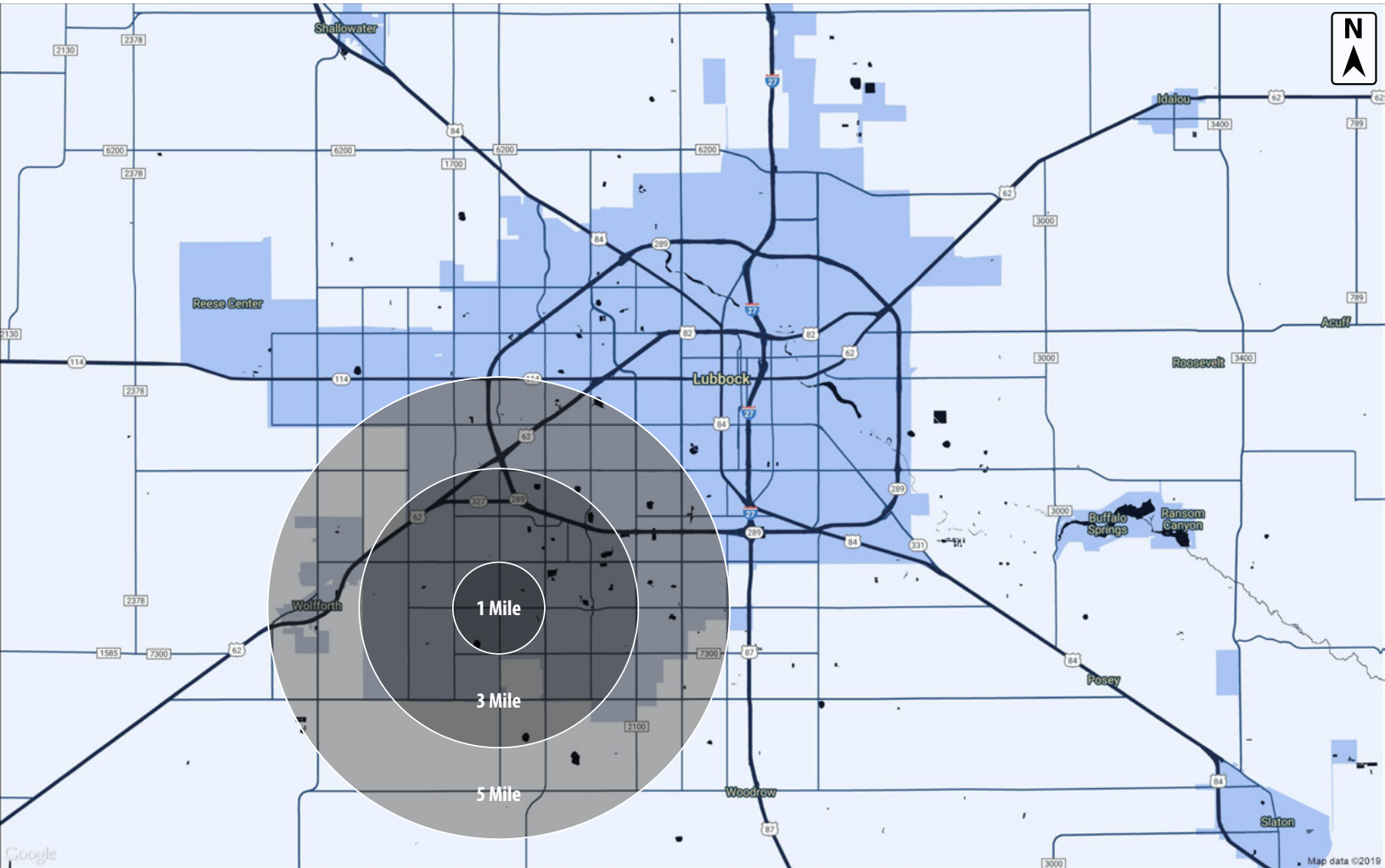
Zoned: C-3 - General Retail District

1.68 Acres - \$12.50 per Square Foot





# Demographics



### POPULATION

	1 MILE	3 MILES	5 MILES
TOTAL POPULATION	6,547	48,419	117,930
MEDIAN AGE	31.4	30.5	32.4
MEDIAN AGE (MALE)	39.0	37.3	34.5
MEDIAN AGE (FEMALE)	40.2	39.2	36.7

### HOUSEHOLDS & INCOME

	1 MILE	3 MILES	5 MILES
TOTAL HOUSEHOLDS	2,528	20,745	48,929
# OF PERSONS PER HH	2.6	2.3	2.4
AVERAGE HH INCOME	\$84,658	\$84,466	\$70,388
AVERAGE HOUSE VALUE	\$160,343	\$171,651	\$151,831

CBCWORLDWIDE.COM

Beau Tucker, CCIM  
 806.470.3944  
 BTucker@CBCWorldwide.com  
 CBCLandMan.com

©2020 Coldwell Banker Real Estate LLC, dba Coldwell Banker Commercial Capital Advisors. All rights reserved. Coldwell Banker Commercial® and the Coldwell Banker Commercial are registered service marks owned by Coldwell Banker Real Estate LLC. Coldwell Banker Real Estate LLC, dba Coldwell Banker Commercial Affiliates fully supports the principles of the Fair Housing Act and the Equal Opportunity Act. Each office is independently owned and operated. The information provided is deemed reliable, but it is not guaranteed to be accurate or complete, and it should not be relied upon as such. This information should be independently verified before any person enters into a transaction based upon it.



**COLDWELL  
 BANKER  
 COMMERCIAL**

**CAPITAL ADVISORS**