

OWNER/USER REDEVELOPMENT OPPORTUNITY

2233 E. Indian School Road

RETAIL



PROPERTY INFO

- + ±2,900 SF Available
- + Lot Size: ±5,584 SF
- + Signage on Indian School Road
- + Zoned C-2, City of Phoenix
- + ±40,206 VPD on Indian School Road*
- + Approximately 0.75 miles east of SR-51
- + Approximately 10 minutes from Sky Harbor International Airport

*Source: City of Phoenix

Demographics

	1 Mile	3 Miles	5 Miles
2017 Population	22,596	167,149	340,582
2022 Population	24,509	180,744	368,356
2017-2022 Growth	1.64%	1.58%	1.58%
2017 Average Household Income	\$54,300	\$63,748	\$68,026
2022 Average Household Income	\$62,175	\$73,000	\$76,834
2017 Average Home Value	\$250,201	\$320,719	\$359,662

Source: Esri



OWNER/USER REDEVELOPMENT OPPORTUNITY

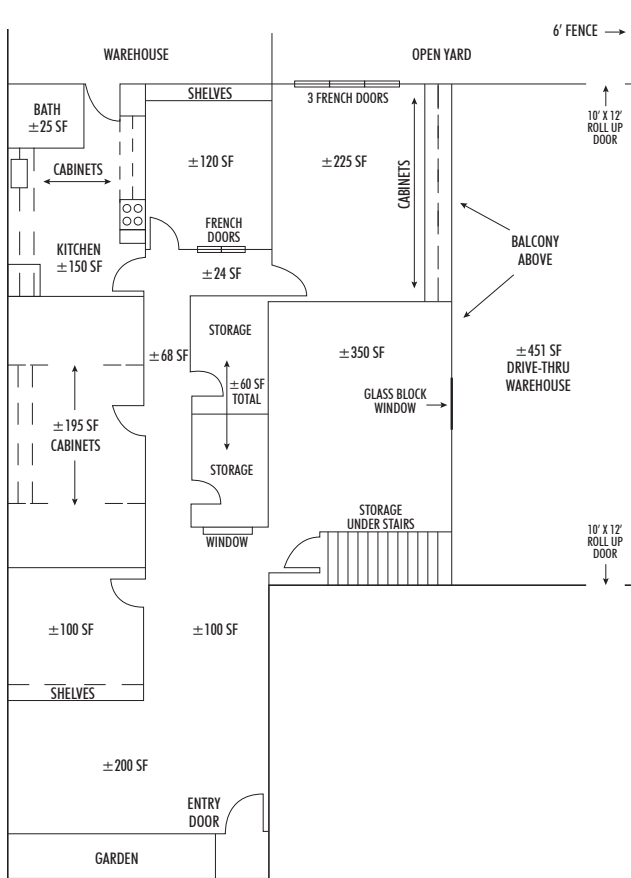
2233 E. Indian School Road

RETAIL

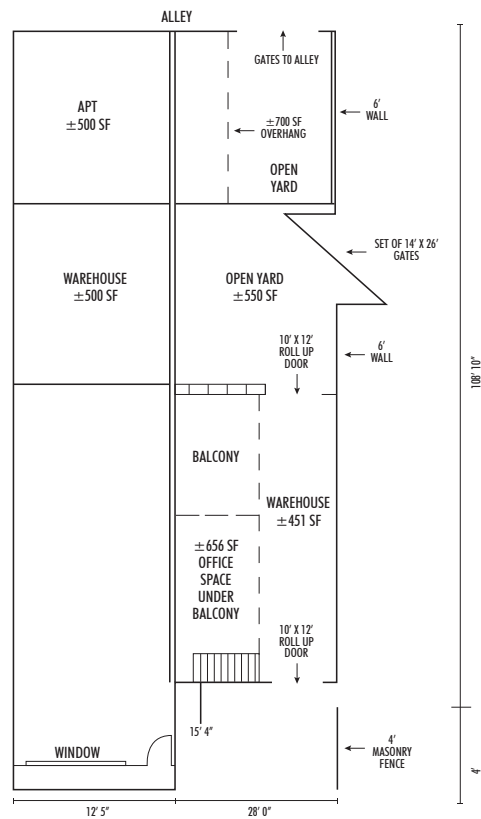


FLOOR PLANS

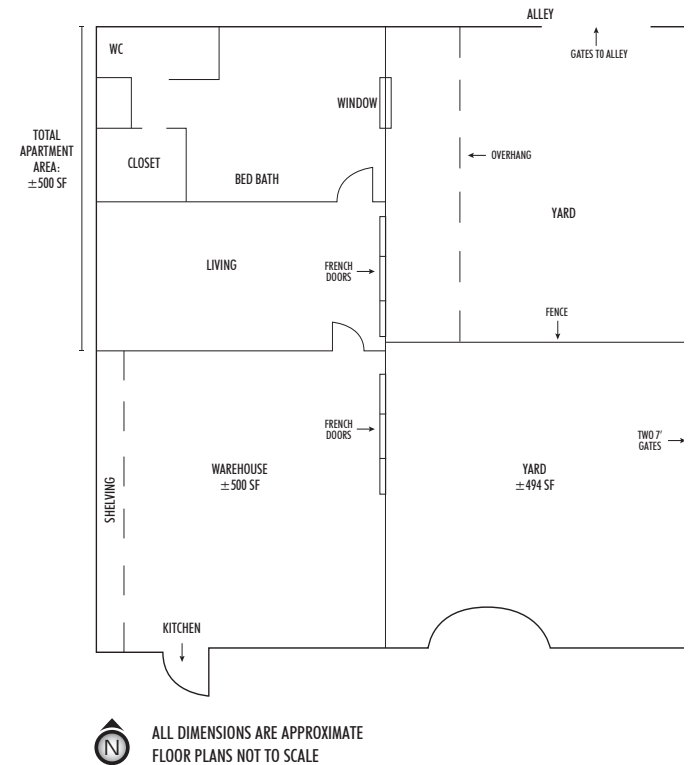
RETAIL



WAREHOUSE



REAR WAREHOUSE AND 1 BED - 3/4 BATH APARTMENT AND ADJOINING YARDS

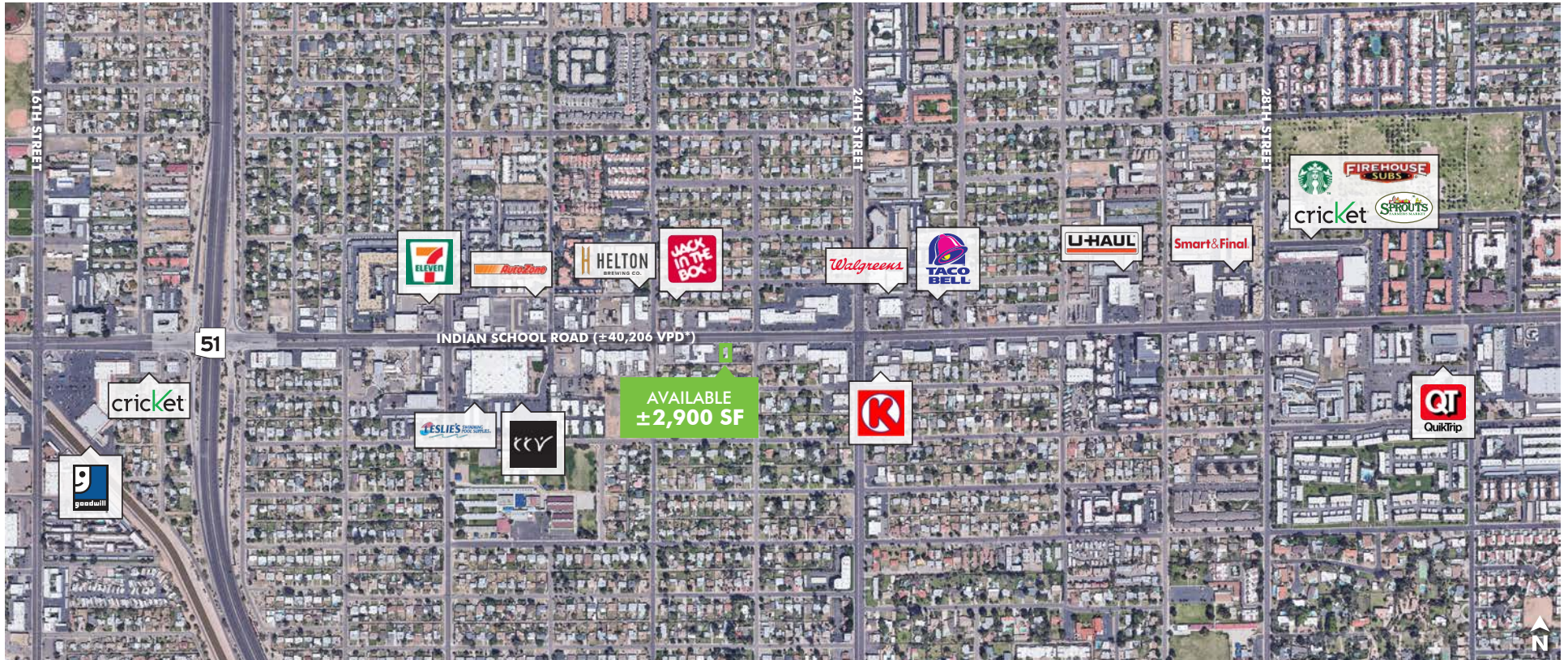


ALL DIMENSIONS ARE APPROXIMATE
FLOOR PLANS NOT TO SCALE

OWNER/USER REDEVELOPMENT OPPORTUNITY

2233 E. Indian School Road

RETAIL



*Source: City of Phoenix

CONTACT US

R. Max Bippus

First Vice President
+1 602 735 5518
max.bippus@cbre.com

© 2018 CBRE, Inc. All rights reserved. This information has been obtained from sources believed reliable, but has not been verified for accuracy or completeness. You should conduct a careful, independent investigation of the property and verify all information. Any reliance on this information is solely at your own risk. CBRE and the CBRE logo are service marks of CBRE, Inc. All other marks displayed on this document are the property of their respective owners. Photos herein are the property of their respective owners. Use of these images without the express written consent of the owner is prohibited.