



COLDWELL BANKER

PLOURDE
REAL ESTATE

RETAIL FOR LEASE

105 MAIN ST, WATERVILLE, ME

1,451 SF



Overview

This prime location on Main Street in Waterville is at the heart of all that is happening downtown! This is located nearby the new Paul J. Schupf Art Center, which has increased foot traffic to the area. Centrally located among other retail and restaurants, this space has great visibility.

The 1st floor was formerly used as Jorgenson's cafe & deli. This unit is a blank slate that can be converted for multiple uses - bring your ideas!

Lease Information

- ✓ Lease Rate: \$14 PSF (Annual)
- ✓ Lease Type: NN
- ✓ Space buildouts may be negotiable
- ✓ Lease Term: 2 to 5 yrs (preferred)
- ✓ Date Available: January 1, 2024

FOR MORE INFORMATION:

QR CODE

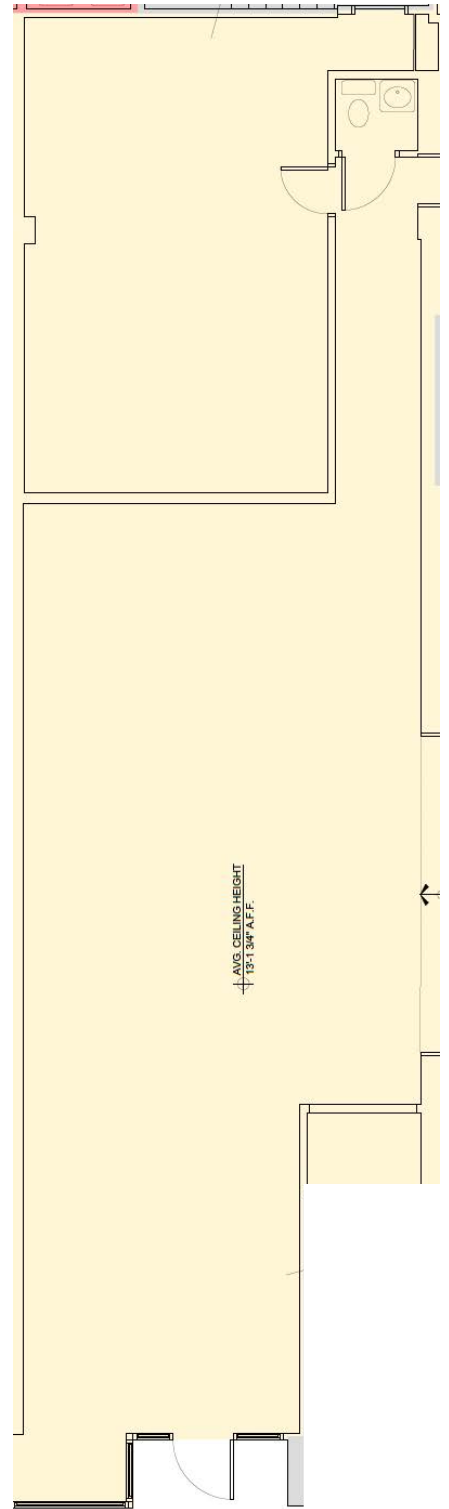
SCAN THIS IMAGE WITH YOUR MOBILE DEVICE.





COLDWELL BANKER

**PLOURDE
REAL ESTATE**



CONTACT US



Don Plourde

Designated Broker/Owner

Cell: (207) 861-2462

Direct: (207) 660-4000

dplourde@cbplourde.com

Jamie Plourde

Associate Broker

Cell: (617) 312-9073

Direct: (207) 660-4034

jplourde@cbplourde.com



143 Silver St, Waterville, ME ● www.cbplourde.com