

14301 Building

14301 NE 193rd Place
Woodinville, WA

Do not disturb current tenants or tour without a Kidder Mathews Broker

20,410 SF building
3,644 SF office
16,384 SF warehouse
382 SF mezzanine

20' clear height

Oversized grade level doors

Great access to SR-522, Hwy-9, and I-405

Building currently has three tenants with separate spaces

Sprinklered

Four paint booths that can stay

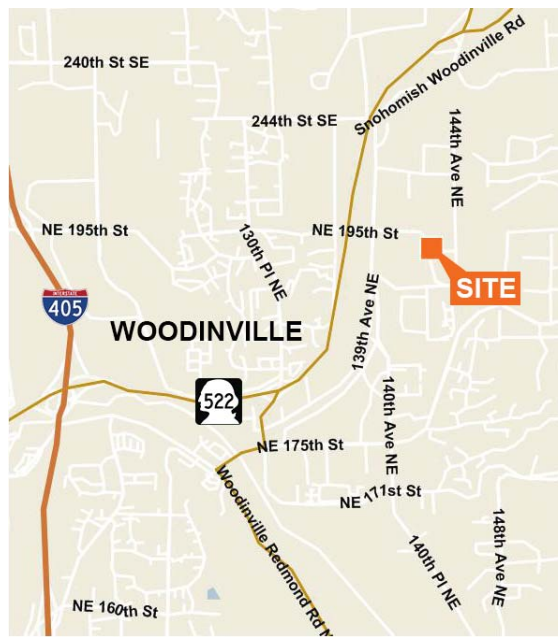
Abundant additional storage below offices in warehouse, as well as 2,200 SF mezzanine area

Building has brand new 25-year roof installed on 03/01/2013

Sale Price: \$2,100,000 (\$102.89/SF)



Location

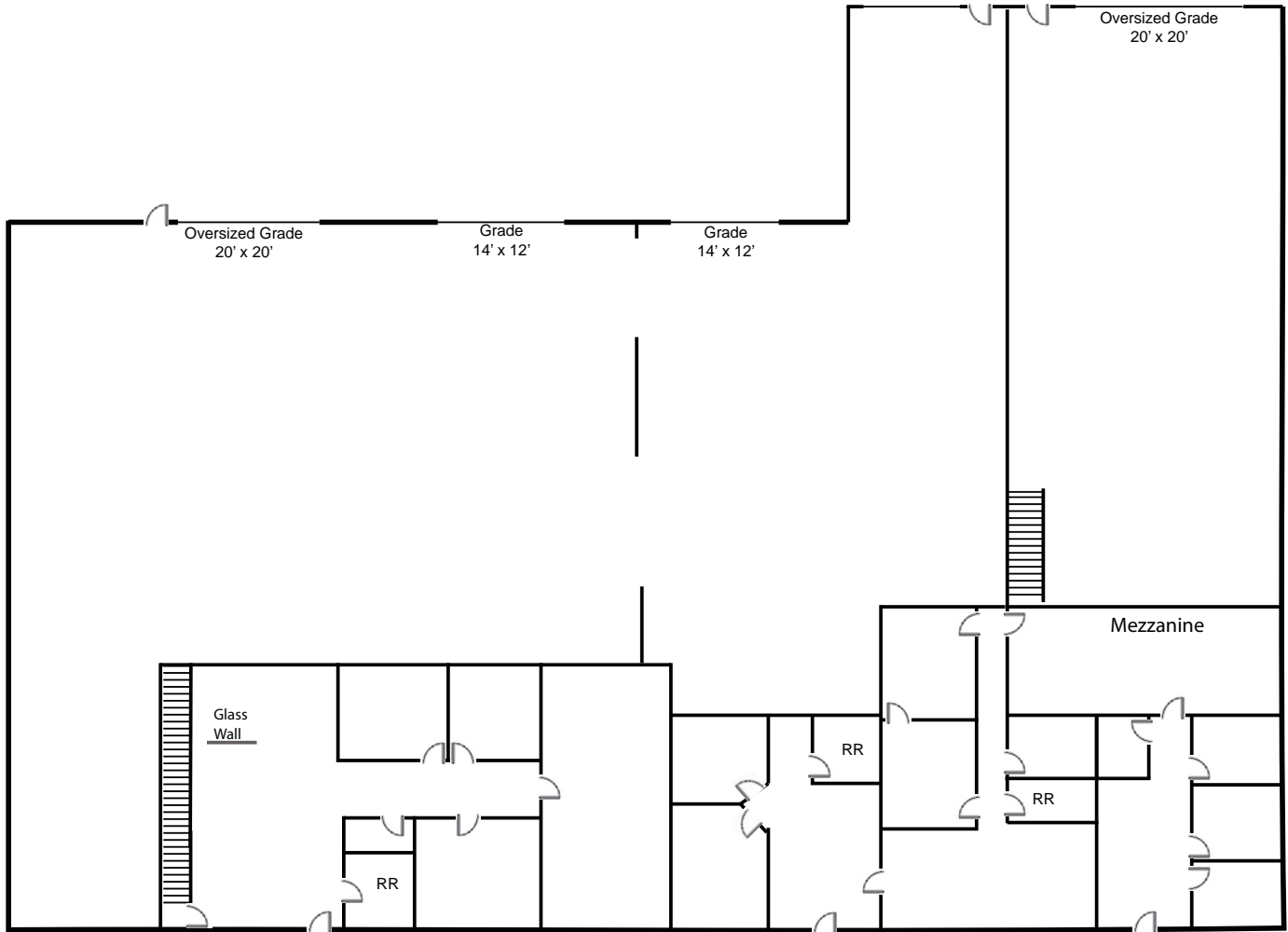


Contact

Jason Bloom
425.450.1102
jbloom@kiddermathews.com

Todd Gauthier
425.450.1118
toddg@kiddermathews.com

14301 Building



Contact

Jason Bloom
425.450.1102
jbloom@kiddermathews.com

Todd Gauthier
425.450.1118
toddg@kiddermathews.com