



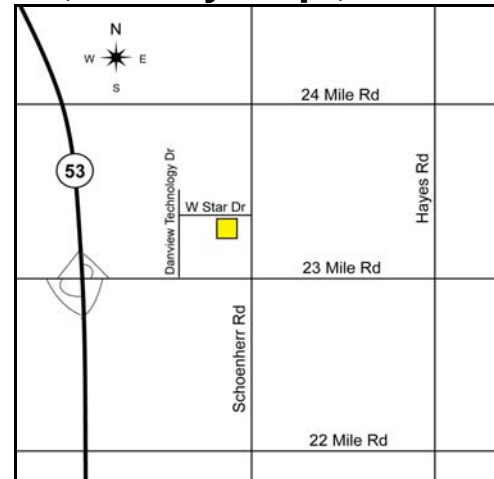
INDUSTRIAL

For Lease



13398-13420 West Star Drive, Unit: #13408, Shelby Twp., MI

Total Bldg Sq. Ft.:	21,660
Available Sq. Ft.:	3,610
Total Shop Sq. Ft.:	400
Total Office Sq. Ft.:	3,210
Lease Rate:	\$7.95 Gross
Zoning:	Lt Industrial
Acreage:	1.39
Clear Height:	9' - 19'
Truckwells / Grade Doors:	0 / 1
Power:	240 Volts
Heat Type:	Radiant/GFA
Sprinklers:	No
Total Parking:	Ample
Available:	Immediately



Comments: Located in a high-end multi-tenant complex. Mostly office which can be scaled back to increase the shop square footage.

For additional information, contact:

Ben Wilkiemeyer, (248) 359-0624
bwilkiemeyer@signatureassociates.com

Paul Saad, (248) 359-0652
psaad@signatureassociates.com



One Towne Square, Suite 1200 - Southfield, MI 48076
www.signatureassociates.com

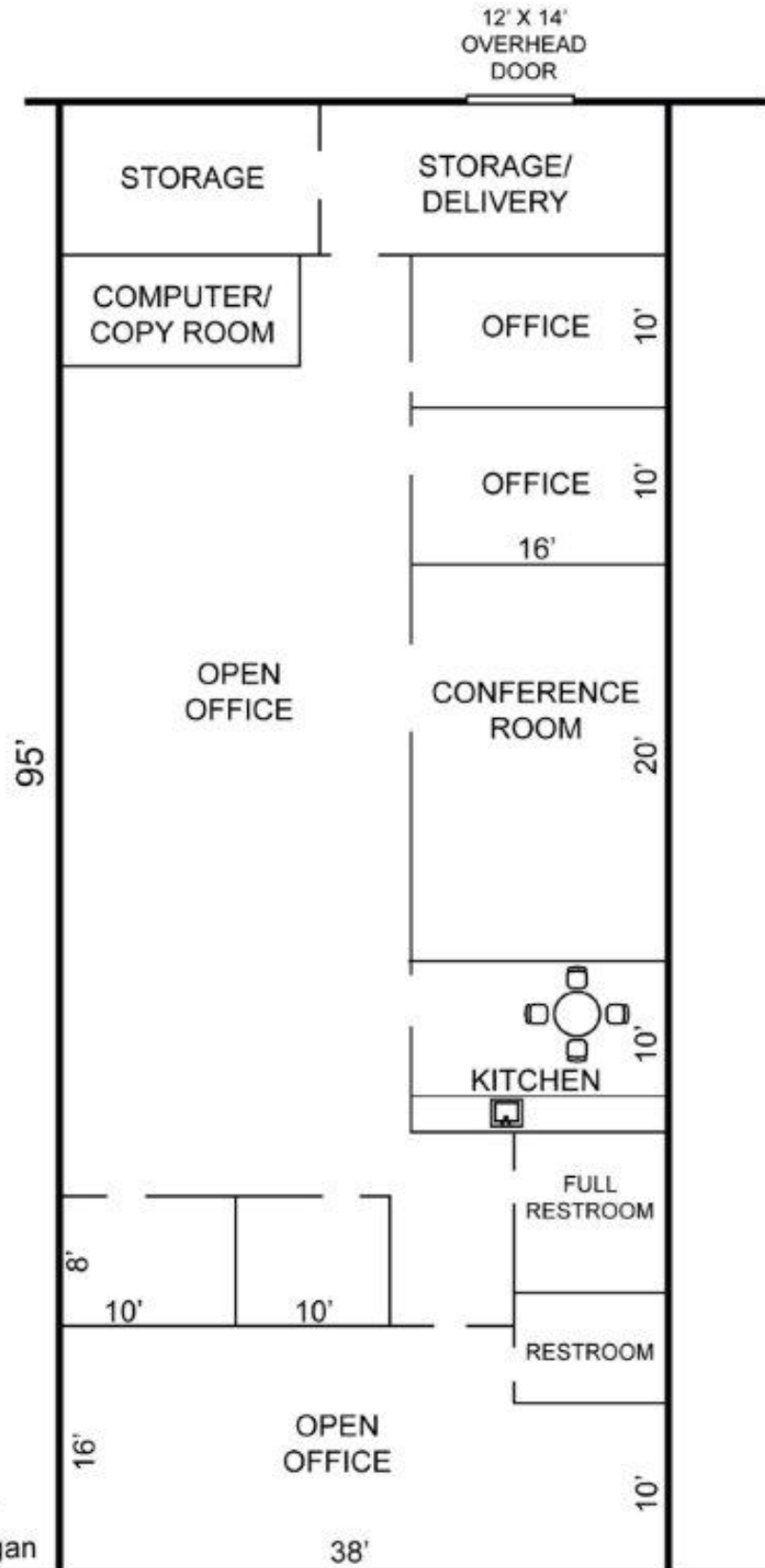


INDUSTRIAL

For Lease

13398-13420 West Star Drive, Unit: #13408, Shelby Twp., MI

Floor Plan



13398-13420 West Star
Shelby Township, Michigan



INDUSTRIAL

For Lease

13398-13420 West Star Drive, Unit: #13408, Shelby Twp., MI

Site Plan

