



FOR LEASE

Park Center I

33400 8TH AVE S, FEDERAL WAY, WA



1,485 - 6,508 SF available, 2017 lobby renovations

WILL FRAME
253.722.1412
will.frame@kidder.com

DREW FRAME
253.722.1433
drew.frame@kidder.com

**Kidder
Mathews**

This information supplied herein is from sources we deem reliable. It is provided without any representation, warranty, or guarantee, expressed or implied as to its accuracy. Prospective Buyer or Tenant should conduct an independent investigation and verification of all matters deemed to be material, including, but not limited to, statements of income and expenses. Consult your attorney, accountant, or other professional advisor.

KIDDER.COM

FOR LEASE

Park Center I

33400 8TH AVE S, FEDERAL WAY, WA



Office Space

AVAILABLE 1,485 - 6,508 SF

RATE \$20.50 PSF, per year, full service

PARKING covered and surface on-site at 3.36/1,000 SF

AMENITIES locker room facilities and storage available

LOCATED on 333rd and 8th Ave S the hub of West Campus office

EASY ACCESS to Hwy 18, Hwy 99 and I-5

AVAILABILITIES

Suite 117	1,485 SF	Suite 200	3,875 SF
Suite 136	3,352 SF	Suite 220	6,508 SF

WILL FAME
253.722.1412
will.frame@kidder.com

DREW FRAME
253.722.1433
drew.frame@kidder.com

KIDDER.COM

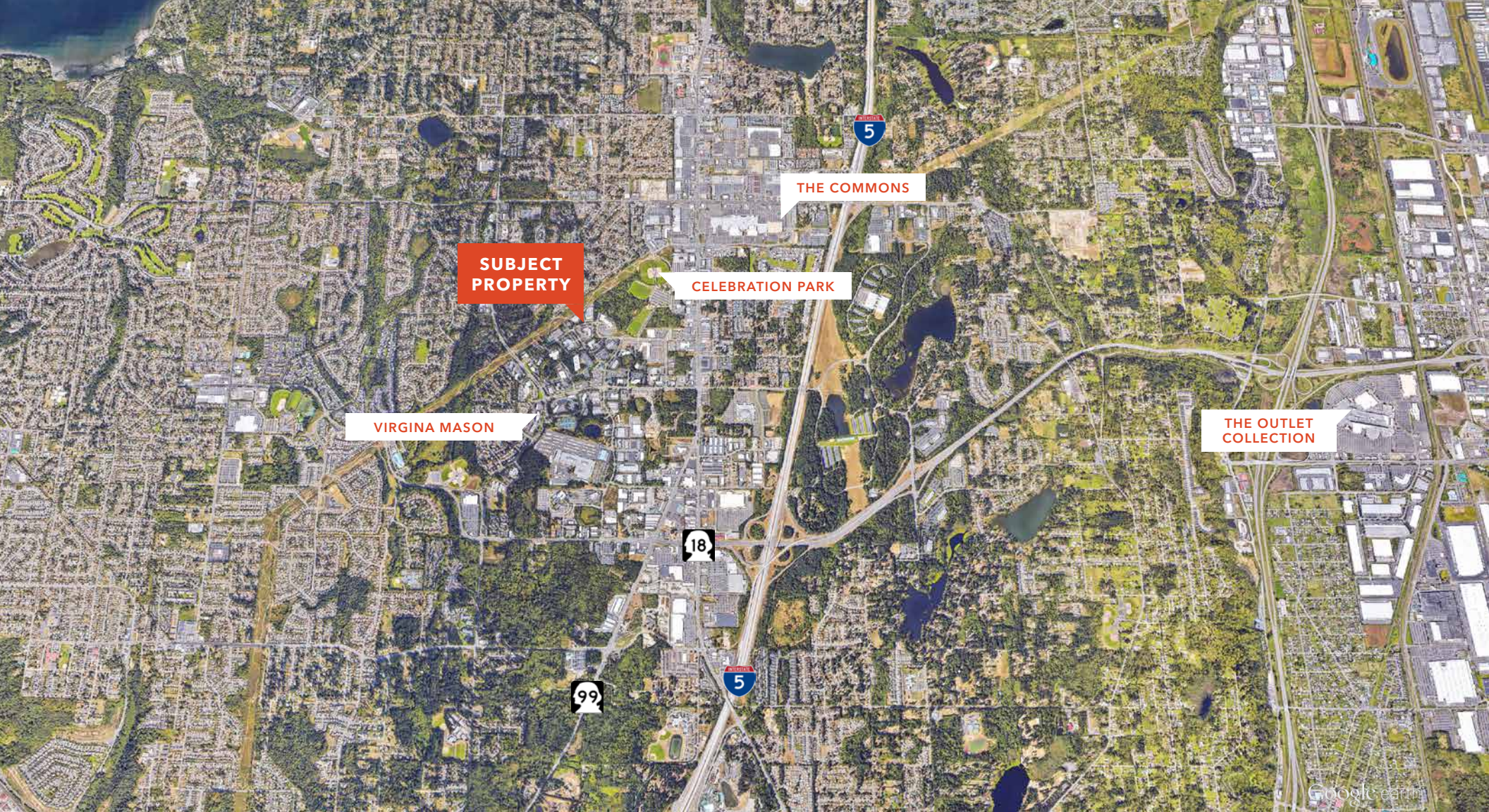
This information supplied herein is from sources we deem reliable. It is provided without any representation, warranty, or guarantee, expressed or implied as to its accuracy. Prospective Buyer or Tenant should conduct an independent investigation and verification of all matters deemed to be material, including, but not limited to, statements of income and expenses. Consult your attorney, accountant, or other professional advisor.



FOR LEASE

Park Center I

33400 8TH AVE S, FEDERAL WAY, WA



KIDDER.COM

This information supplied herein is from sources we deem reliable. It is provided without any representation, warranty, or guarantee, expressed or implied as to its accuracy. Prospective Buyer or Tenant should conduct an independent investigation and verification of all matters deemed to be material, including, but not limited to, statements of income and expenses. Consult your attorney, accountant, or other professional advisor.

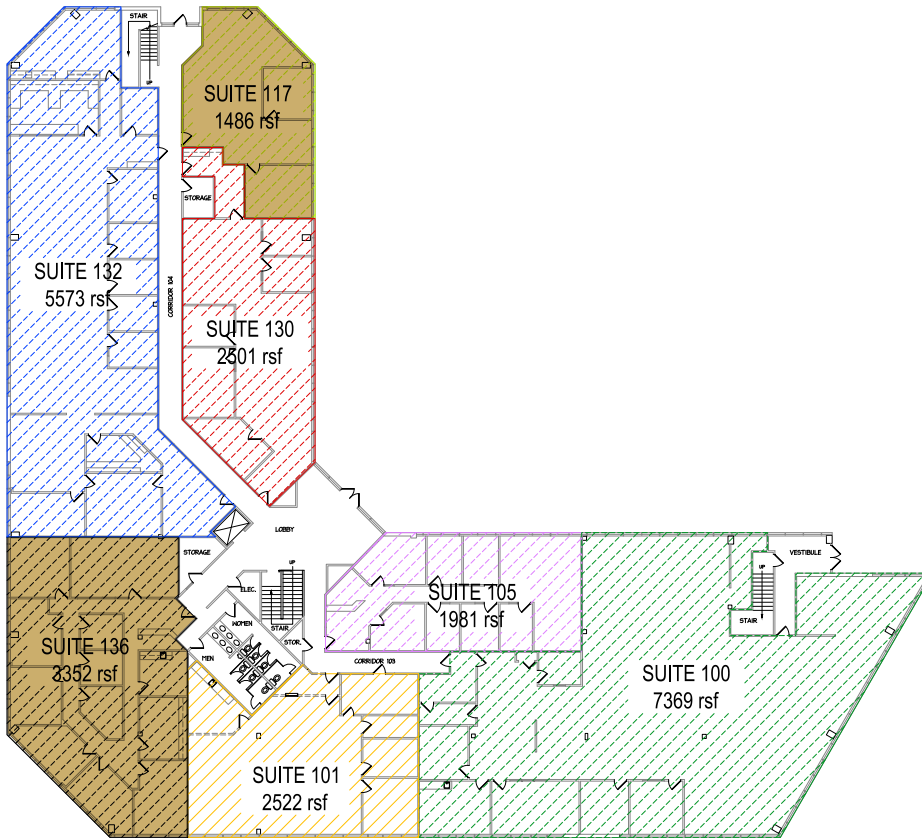
km Kidder Mathews

FOR LEASE

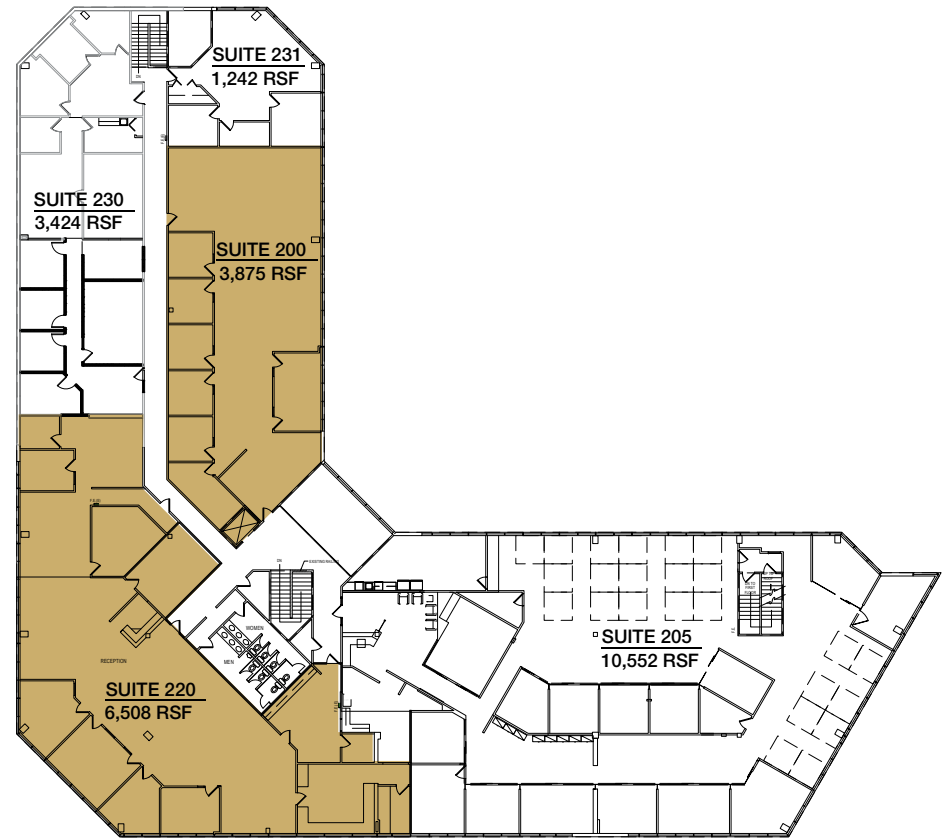
Park Center I

33400 8TH AVE S, FEDERAL WAY, WA

First Floor



Second Floor



KIDDER.COM

This information supplied herein is from sources we deem reliable. It is provided without any representation, warranty, or guarantee, expressed or implied as to its accuracy. Prospective Buyer or Tenant should conduct an independent investigation and verification of all matters deemed to be material, including, but not limited to, statements of income and expenses. Consult your attorney, accountant, or other professional advisor.

km Kidder Mathews