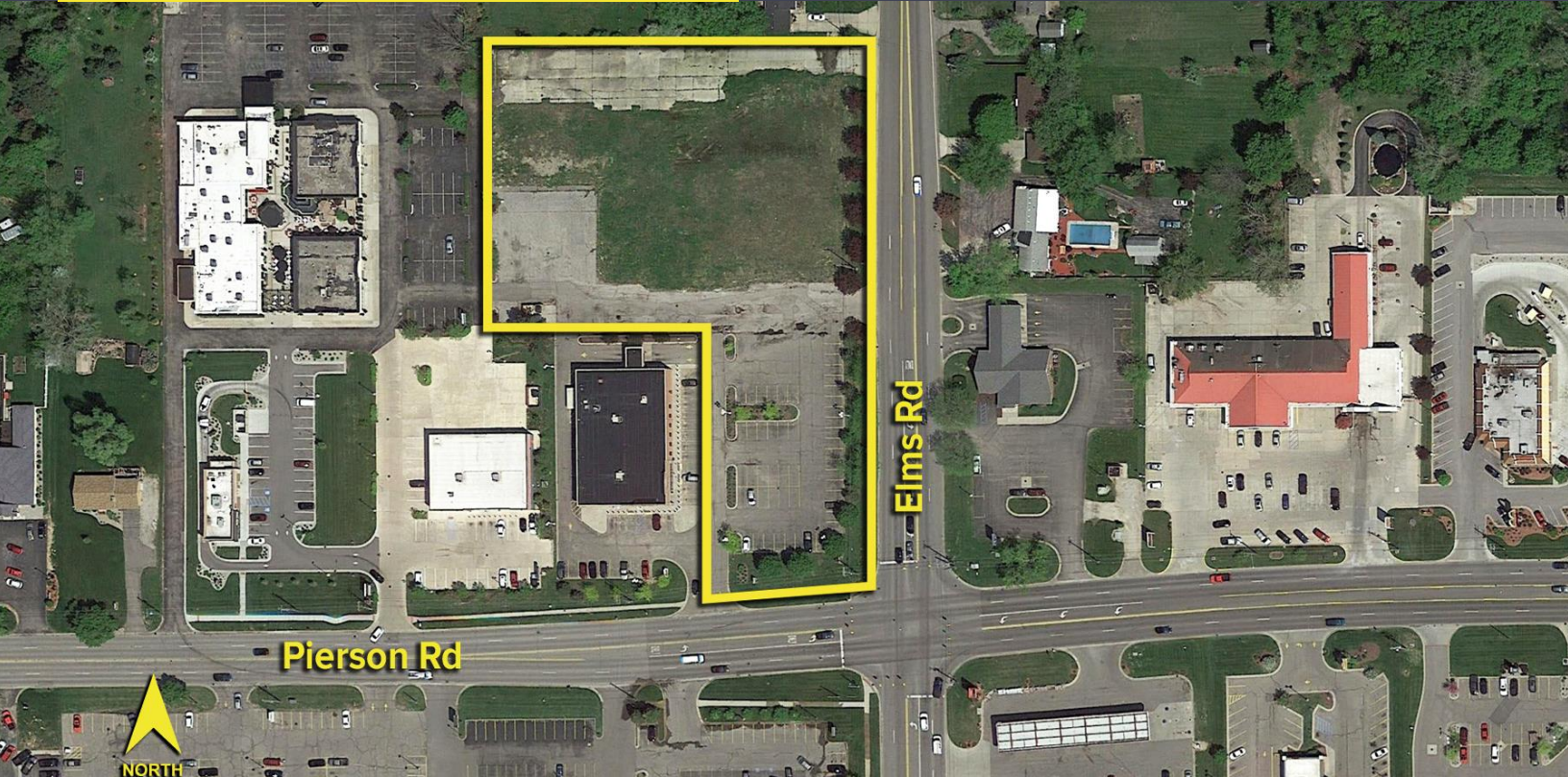


1565 PIERSON ROAD  
FLUSHING, MICHIGAN

LAND FOR SALE  
3.91 Acres Available

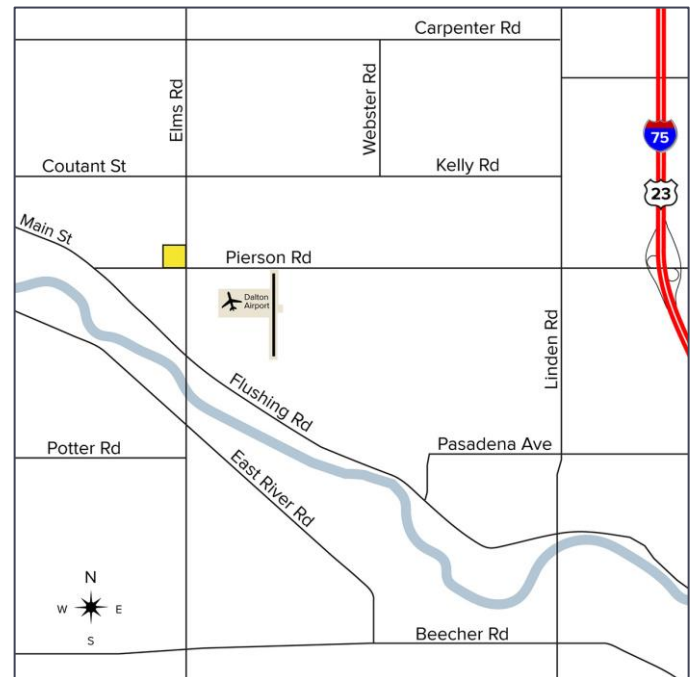


**SIGNATURE  
ASSOCIATES**  
KNOW SIGNATURE | KNOW RESULTS



## PROPERTY FEATURES

- 3.91 acres available
- Zoned B-2, General Business
- Hard corner with utilities at site adjacent to Rite Aid
- Excellent development opportunity for retail, office, or medical
- Sits among many national retailers and restaurants including Kroger, Walgreen's, McDonald's, Wendy's, Taco Bell and other
- Sale price: \$975,000 (\$249,360.61/acre)



For more information, please contact:

**MARVIN PETROUS**

(248) 359 0647

[mpetrous@signatureassociates.com](mailto:mpetrous@signatureassociates.com)

**GARY STEPHENS**

(248) 948 0104

[gstephens@signatureassociates.com](mailto:gstephens@signatureassociates.com)

**STEVE GORDON**

(248) 948 0101

[sgordon@signatureassociates.com](mailto:sgordon@signatureassociates.com)

**SIGNATURE ASSOCIATES**

One Towne Square, Suite 1200

Southfield, MI 48076

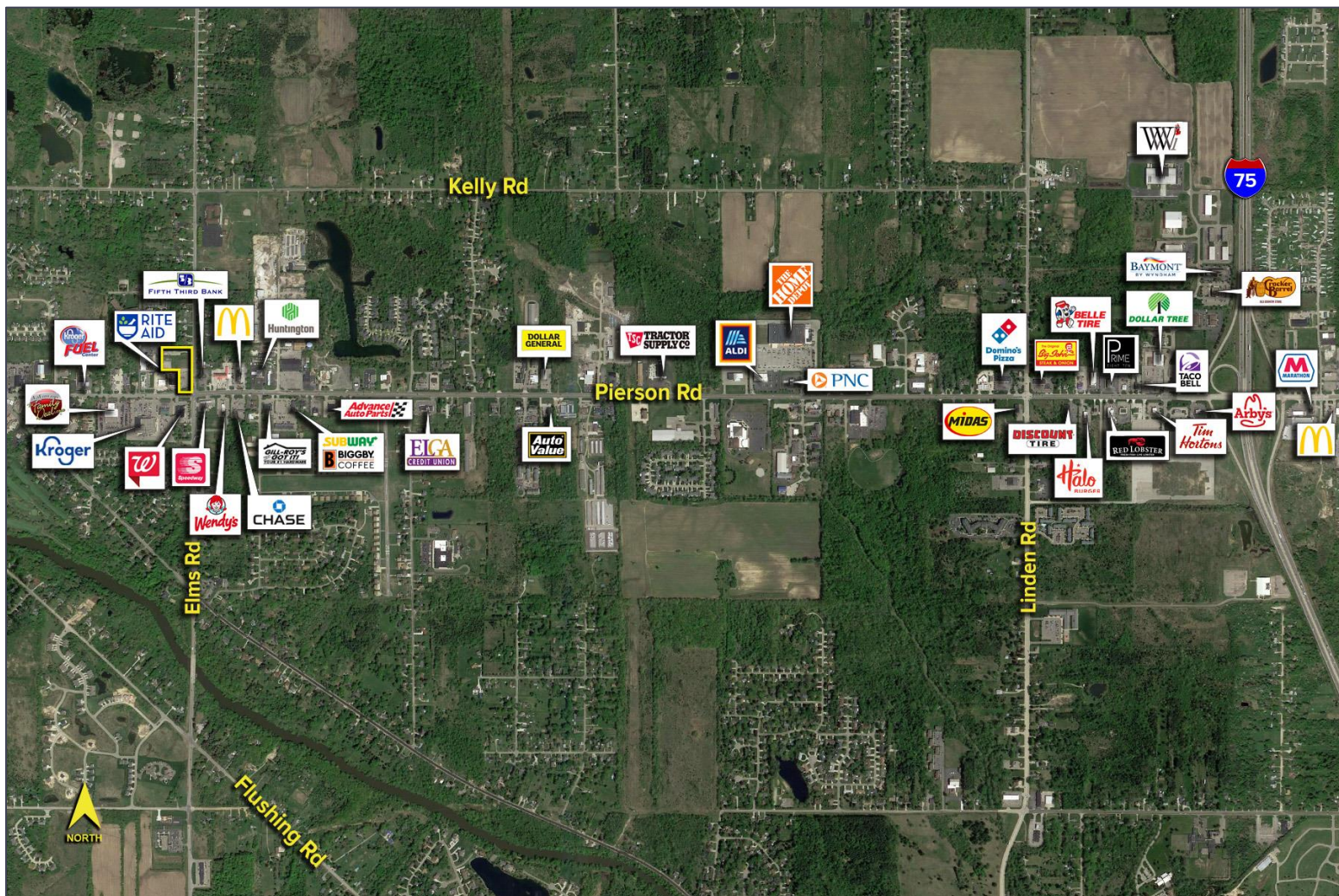
[www.signatureassociates.com](http://www.signatureassociates.com)

# 1565 Pierson Road – Flushing, Michigan

## Land For Sale

3.91  
Acres  
AVAILABLE

Labeled Aerial



For more information, please contact:

**MARVIN PETROUS**

(248) 359 0647

[mpetrous@signatureassociates.com](mailto:mpetrous@signatureassociates.com)

**GARY STEPHENS**

(248) 948 0104

[gstephens@signatureassociates.com](mailto:gstephens@signatureassociates.com)

**STEVE GORDON**

(248) 948 0101

[sgordon@signatureassociates.com](mailto:sgordon@signatureassociates.com)

**SIGNATURE ASSOCIATES**

One Towne Square, Suite 1200

Southfield, MI 48076

[www.signatureassociates.com](http://www.signatureassociates.com)