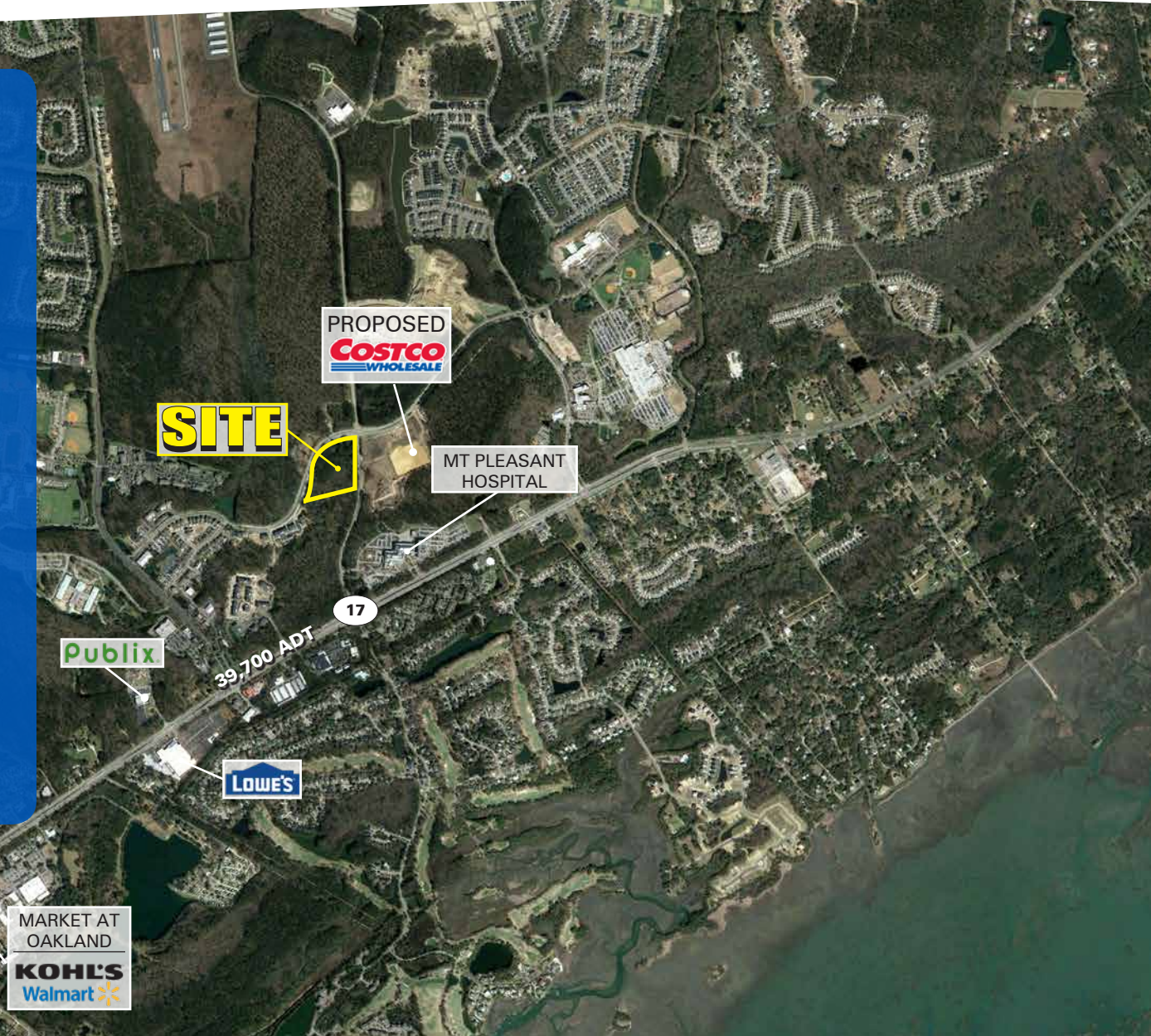


## Available for BTS, GL, or Lease

- Outparcel opportunity directly across the street from Costco
- Strategically situated in an extremely high growth corridor
- Carolina Park will include over 1,500 homes, 530 multifamily units, 130 senior living units, numerous schools with over 5,000 students, and Roper Hospital
- The site benefits from full access off of Faison Rd and the shared main access point to Costco

2018 DEMOGRAPHICS	1 MILE	3 MILE	5 MILE
Population	3,599	25,369	45,050
Med HH Income	\$113,628	\$123,563	\$123,431



**Robey Spratt**  
 704.697.1901  
 rspratt@atlanticretail.com

**Roy Crain**  
 704.697.1903  
 rrcrain@atlanticretail.com

FUTURE DEVELOPMENT

Park Ave Blvd

PLANNED RESTAURANT

PLANNED LOCAL PHARMACY

**COSTCO**  
WHOLESALE  
UNDER CONSTRUCTION

PLANNED ORTHODONTIST

Faison Road

ROPER ST. FRANCIS  
MOUNT PLEASANT HOSPITAL



MT PLEASANT, SC  
**Carolina Park**

**Robey Spratt**

704.697.1901  
rspratt@atlanticretail.com

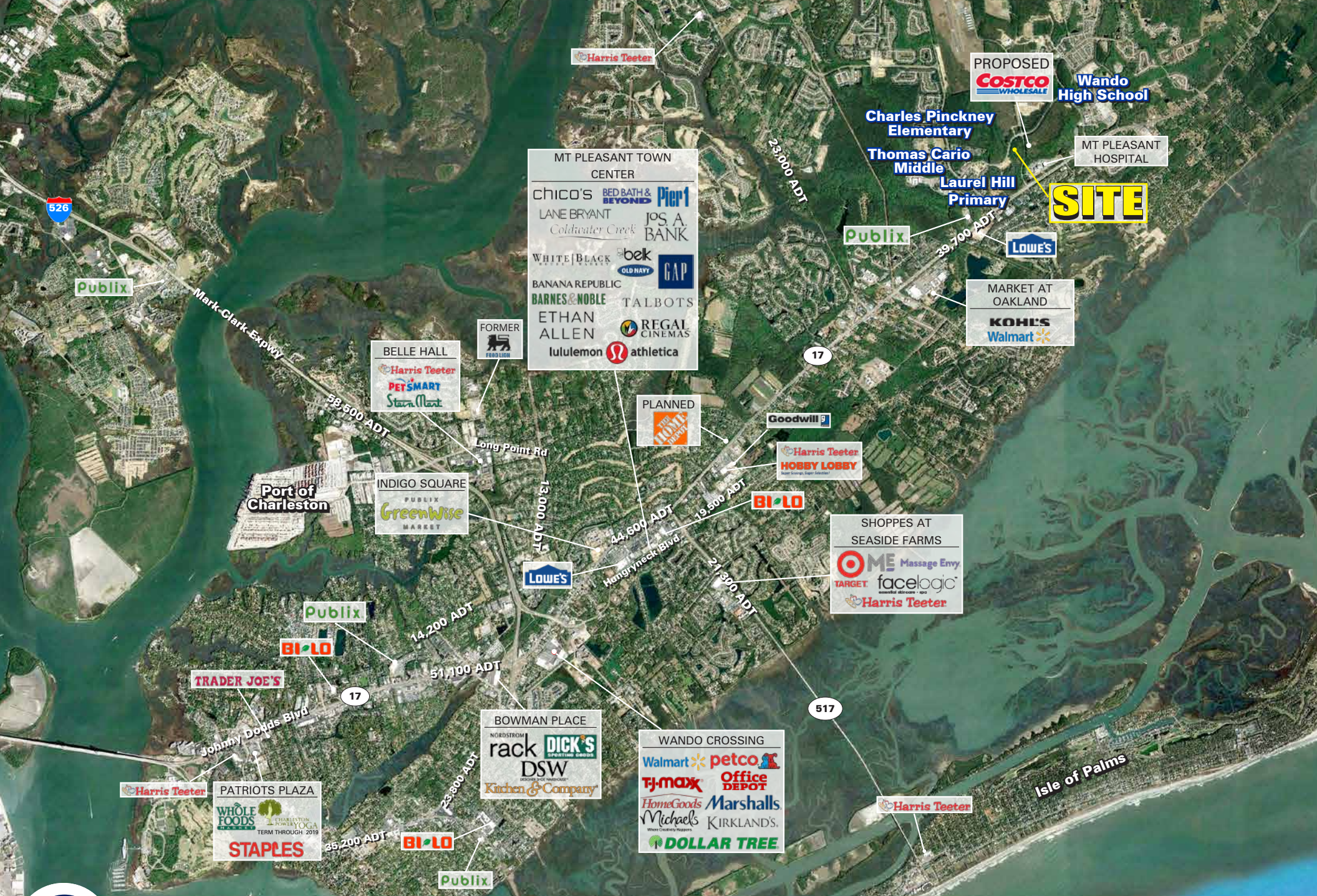
**Roy Crain**

704.697.1903  
rcrain@atlanticretail.com

SITE PLAN OVERLAY

© ATLANTIC RETAIL 2018

ATLANTICRETAIL.COM



MT PLEASANT, SC  
**Carolina Park**

MARKET AERIAL

**Robey Spratt**  
 704.697.1901  
 rspratt@atlanticretail.com

**Roy Crain**  
 704.697.1903  
 rcrain@atlanticretail.com



**\$123,563**

MED HH INCOME  
IN 3 MILE RADIUS



**39,700**

ADT ON NEARBY  
ROUTE 17



MT PLEASANT, SC  
**Carolina Park**

SITE PLAN

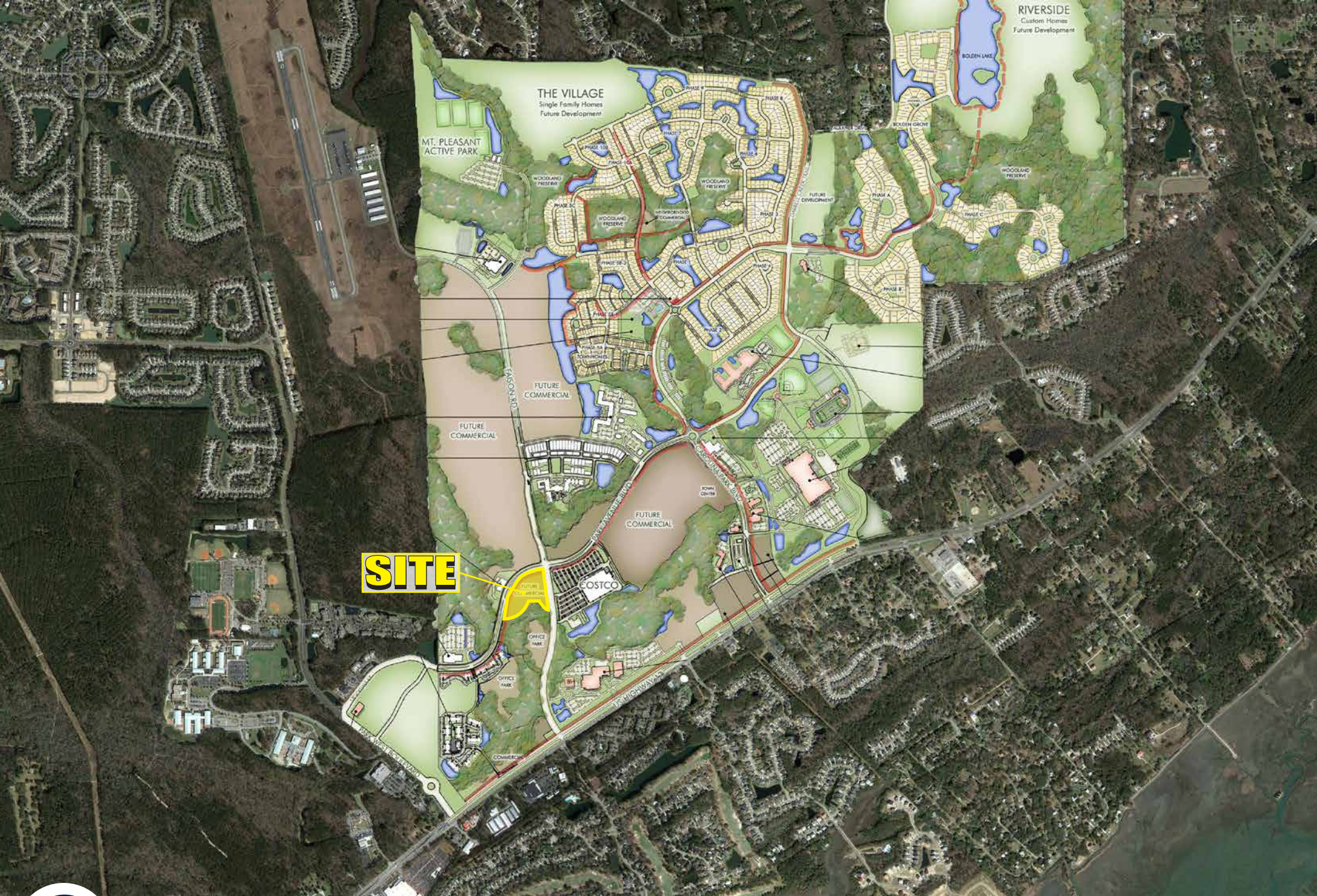
**Robey Spratt**

704.697.1901  
rspratt@atlanticretail.com

**Roy Crain**

704.697.1903  
rcrain@atlanticretail.com

ATLANTICRETAIL.COM



MT PLEASANT, SC  
**Carolina Park**

CAROLINA PARK MASTER PLAN OVERLAY

**Robey Spratt**

704.697.1901  
rspratt@atlanticretail.com

**Roy Crain**

704.697.1900  
rcrain@atlanticretail.com

ATLANTICRETAIL.COM