

± 3 acres General Commercial on Rt. 40

6949 Baltimore National Pike | Frederick | MD |

VCRE.CO



Tremendous traffic count on Rout 40 and Bowers Road. General Commercial Zoning, Currently used as Honda Dealership, UTV & ATV, Ground Rent with occupied residential trailers and two residential homes, Ideal for retail, rental, storage, to name a few. Asking \$1,850,000



Office: 240.367.9600 | Fax: 240.668.6822 | 1845 Brookfield Ct. | Frederick, MD 21701

Tony "C" Checchia

301.471.8669 (Tony) mobile

TonyC@vcre.co

240.367.9600

6949 Baltimore National Pike

Frederick, MD

VCRE.CO

Water-Sewer Map



- Frederick County Sewer Service Area**
 - S-1
 - S-3
 - S-4
 - S-5
 - Multi-Use
 - Planned Service
 - No Planned Service
- Frederick City Sewer Service Area**
 - S-1
 - S-3
 - S-4
 - S-5
 - Multi-Use
 - Planned Service
 - No Planned Service
- Frederick County Boundary**
- Surrounding Counties**
 - <all other values>
 - Maryland

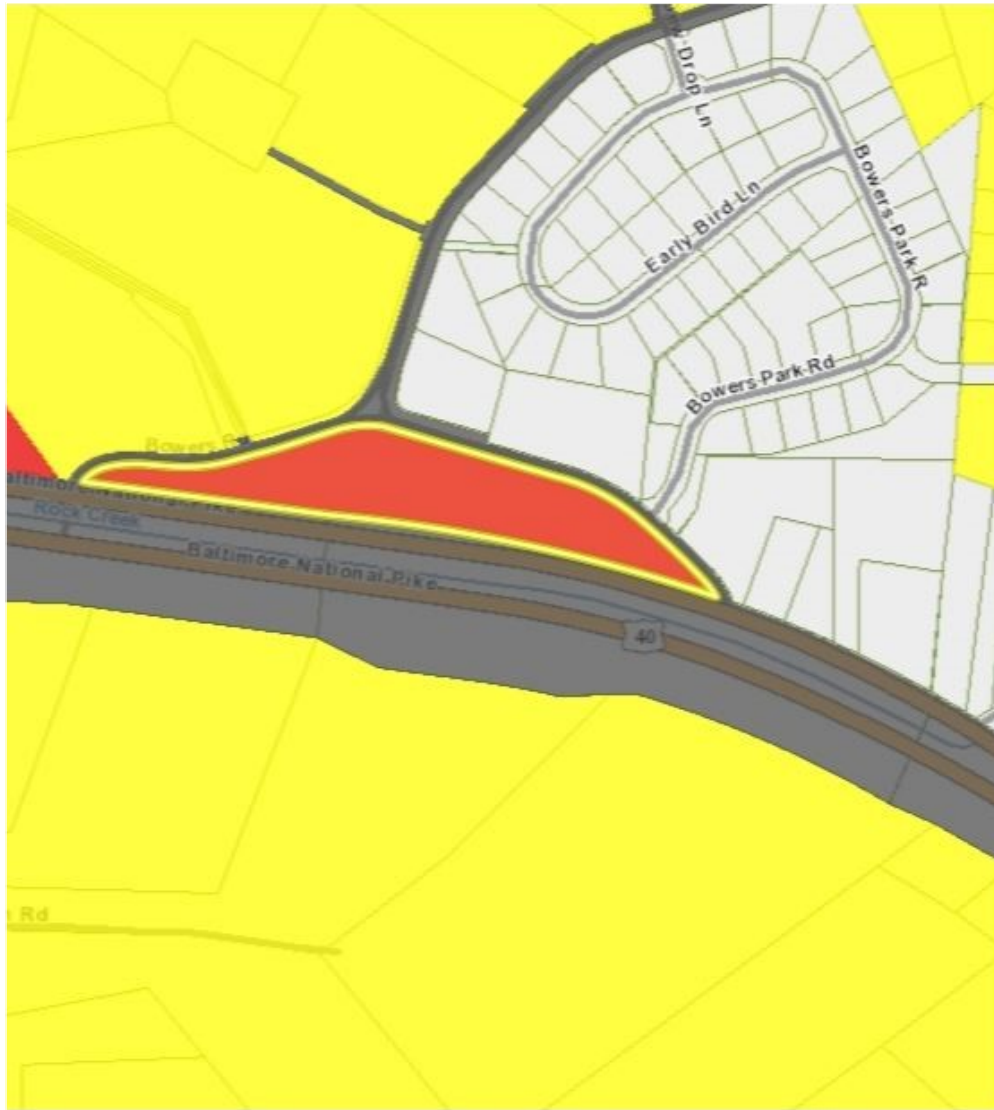
Disclaimer: Information obtained from sources deemed to be reliable. However, we make no guarantee, warranty or representation. Information, prices, and other data may change without notice.

6949 Baltimore National Pike

Frederick, MD

VCRE.CO

Zoning



Zoning

- A - Agricultural
- RC - Resource Conservation
- OSR - Open Space Recreation
- R1 - Low Density Residential
- R3 - Low Density Residential
- R5 - Middle Density Residential
- R8 - Middle Density Residential
- R12 - High Density Residential
- R16 - High Density Residential
- PUD - Planned Unit Development
- VC - Village Center
- HS - Highway Services
- GC - General Commercial
- GI - General Industrial
- LI - Limited Industrial
- ORI - Office/Research/Industrial
- MX - Mixed Use
- MXD - Mixed Use Development
- MM - Mineral Mining
- IE - Institutional
- MUN - Municipality
- ROW - Right of Way
- Fire Stations
- Golf Courses
- Libraries
- MARC Rail Stations
- Police
- Post Office
- Frederick County Boundary
- Surrounding Counties
- <all other values>
- Maryland

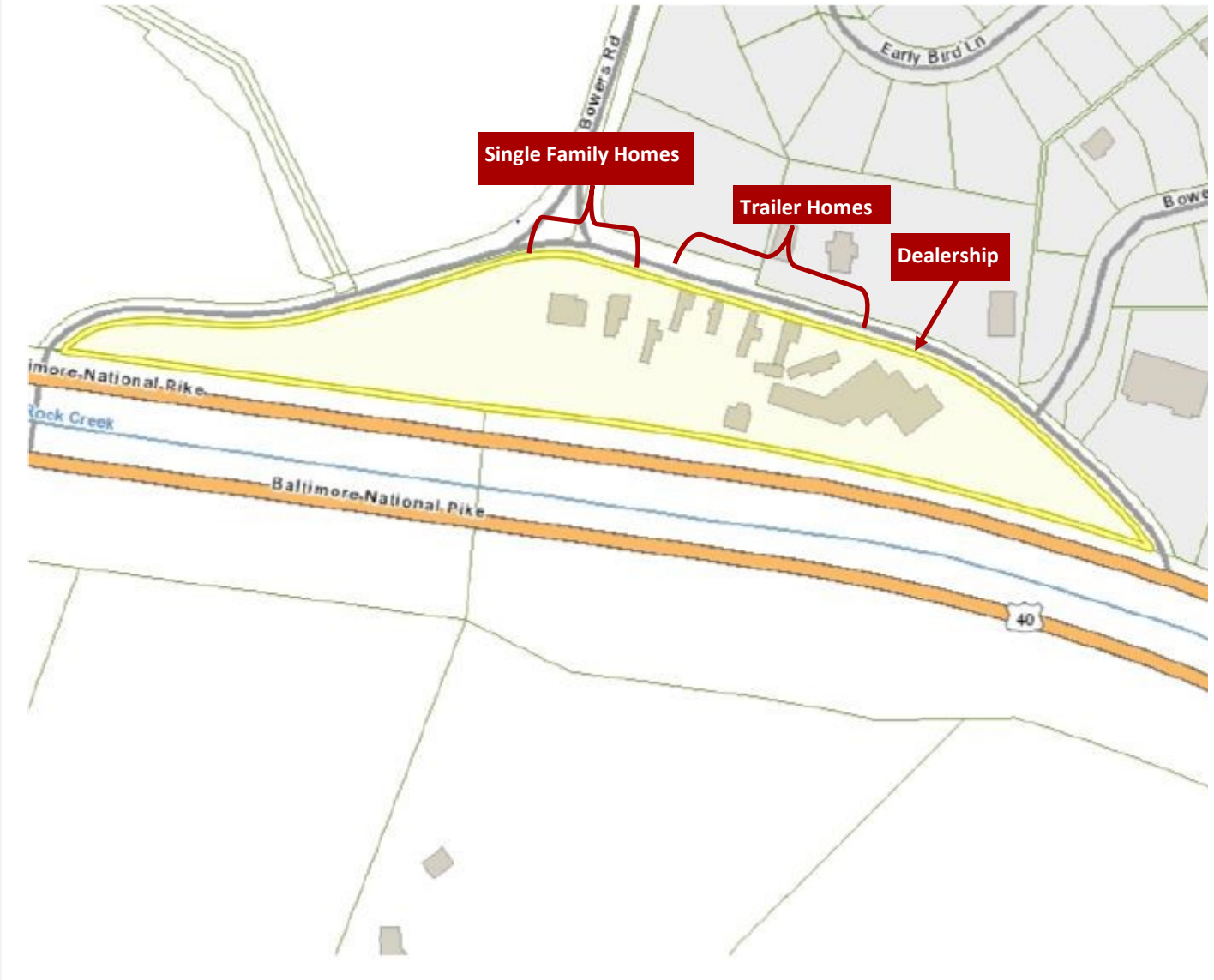
Disclaimer: Information obtained from sources deemed to be reliable. However, we make no guarantee, warranty or representation. Information, prices, and other data may change without notice.

6949 Baltimore National Pike

Frederick, MD

VCRE.CO

Aerial



Disclaimer: Information obtained from sources deemed to be reliable. However, we make no guarantee, warranty or representation. Information, prices, and other data may change without notice.