

THOUSAND OAKS PROFESSIONAL BUILDING

2667 North Moorpark Road • Thousand Oaks, CA 91360



**1,995 RSF MEDICAL OR OFFICE SUITE
AVAILABLE FOR SUBLEASE**

CORY RICHMOND
PRINCIPAL
818.444.4915
crichmond@lee-re.com
License ID #01225466



COMMERCIAL REAL ESTATE SERVICES

Lee & Associates® - LA North/Ventura, Inc • CID #01191898
A Member of the Lee & Associates® Group of Companies
26050 Mureau Rd., Suite 101, Calabasas, CA 91302
P:818.223.4388 F:818.591.1450 • www.lee-associates.com

No warranty or representation is made to the accuracy of the foregoing information. Terms of sale or lease and availability are subject to change or withdrawal without notice.

THOUSAND OAKS PROFESSIONAL BUILDING

1,995 RSF MEDICAL OR OFFICE SUITE AVAILABLE FOR SUBLEASE

PROPERTY HIGHLIGHTS

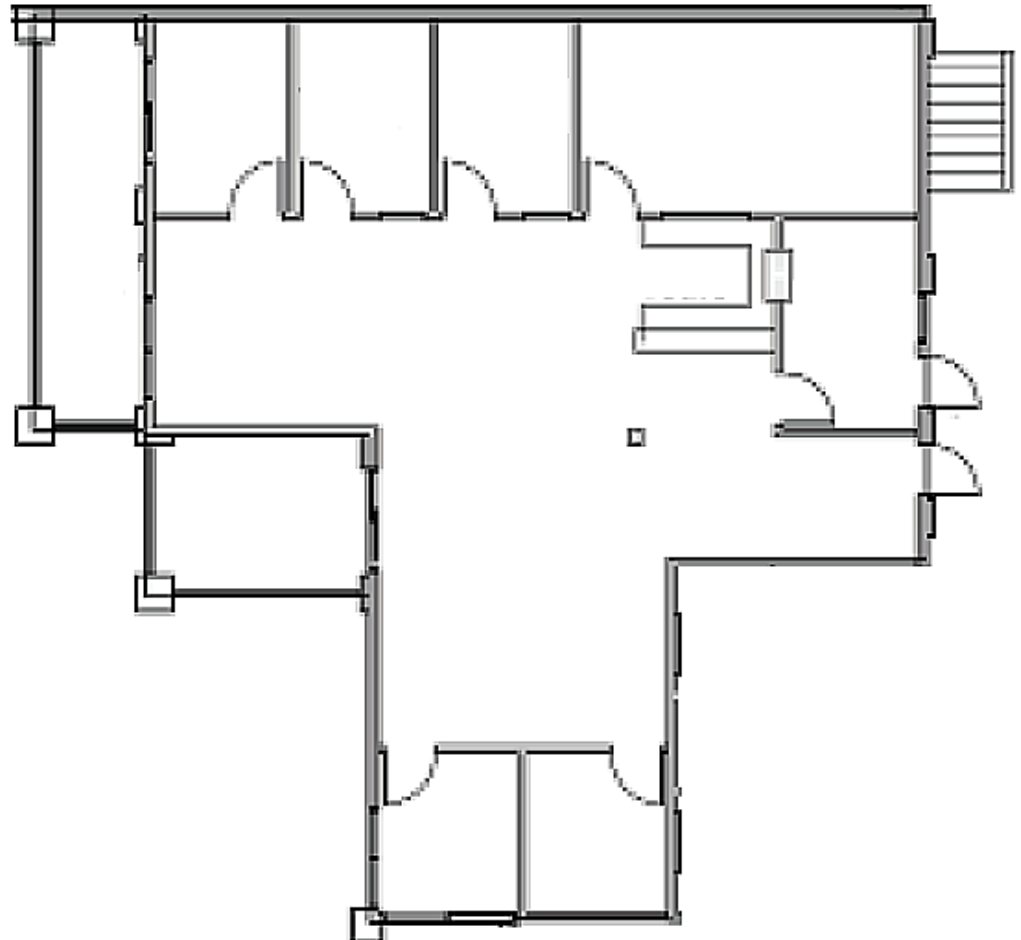
- Office and Medical Building
- Central Thousand Oaks Location
- 2.2 Miles to the Los Robles Hospital Campus
- Abundant Parking

SUITE HIGHLIGHTS

- 1,995 RSF
- \$2.00/RSF Modified Gross
- Available 2nd Quarter 2017
- Suite Located in the Single Story Section of the Project which Provides Direct Access from the Parking Lot
- Monument Signage Available (Subject to Landlord's Approval)



FLOORPLAN SUITE 108



*Not to scale

THOUSAND OAKS PROFESSIONAL BUILDING

1,995 RSF MEDICAL OR OFFICE SUITE AVAILABLE FOR SUBLEASE

AMENITIES AERIAL



For more information
please contact:

CORY RICHMOND
PRINCIPAL
818.444.4915
crichmond@lee-re.com
License ID #01225466

**LEE &
ASSOCIATES®**
COMMERCIAL REAL ESTATE SERVICES

Lee & Associates® - LA North/Ventura, Inc. • Corporate ID #01191898
A Member of the Lee & Associates® Group of Companies
26050 Mureau Rd., Suite 101, Calabasas, CA 91302 • P:818.223.4388 F:818.591.1450
www.lee-associates.com

No warranty or representation is made to the accuracy of the foregoing information. Terms of sale or lease and availability are subject to change or withdrawal without notice.