



Dolphin Commerce Center
11350 NW 25th Street, Doral, FL

Owned by:



Suite 122 Available

28,284 sf

FOR LEASE



Location



Site Info



Floor Plan



Contact



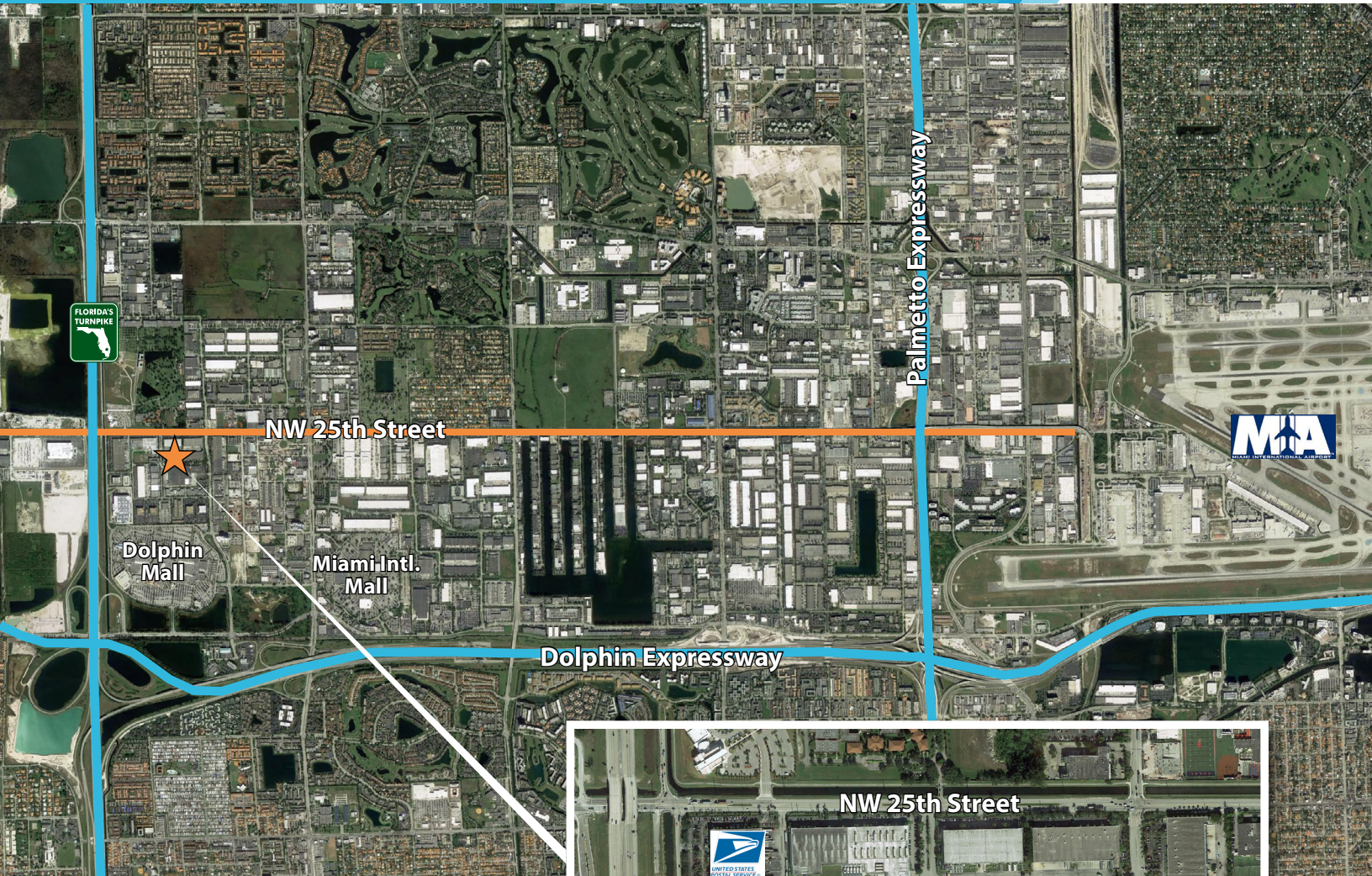
Next

Thomas Viscount

Principal

954.903.1810

tom.viscount@avisonyoung.com



Prime Location

- Doral/Miami
- 0.5 mile to Florida's Turnpike
- 1.5 miles to Dolphin Expressway
- 3.5 miles to Palmetto Expressway
- Convenient access to Miami International Airport (4 miles) and Port of Miami (15 miles)



Home



Location



Site Info



Floor Plan



Contact



Previous



Next

Thomas Viscount

Principal

954.903.1810

tom.viscount@avisonyoung.com



Dolphin Commerce Center

11350 NW 25th Street, Doral, FL

Owned by:



Home



Location



Site Info



Floor Plan



Contact



Previous



Next

Thomas Viscount

Principal

954.903.1810

tom.viscount@avisonyoung.com



Dolphin Commerce Center

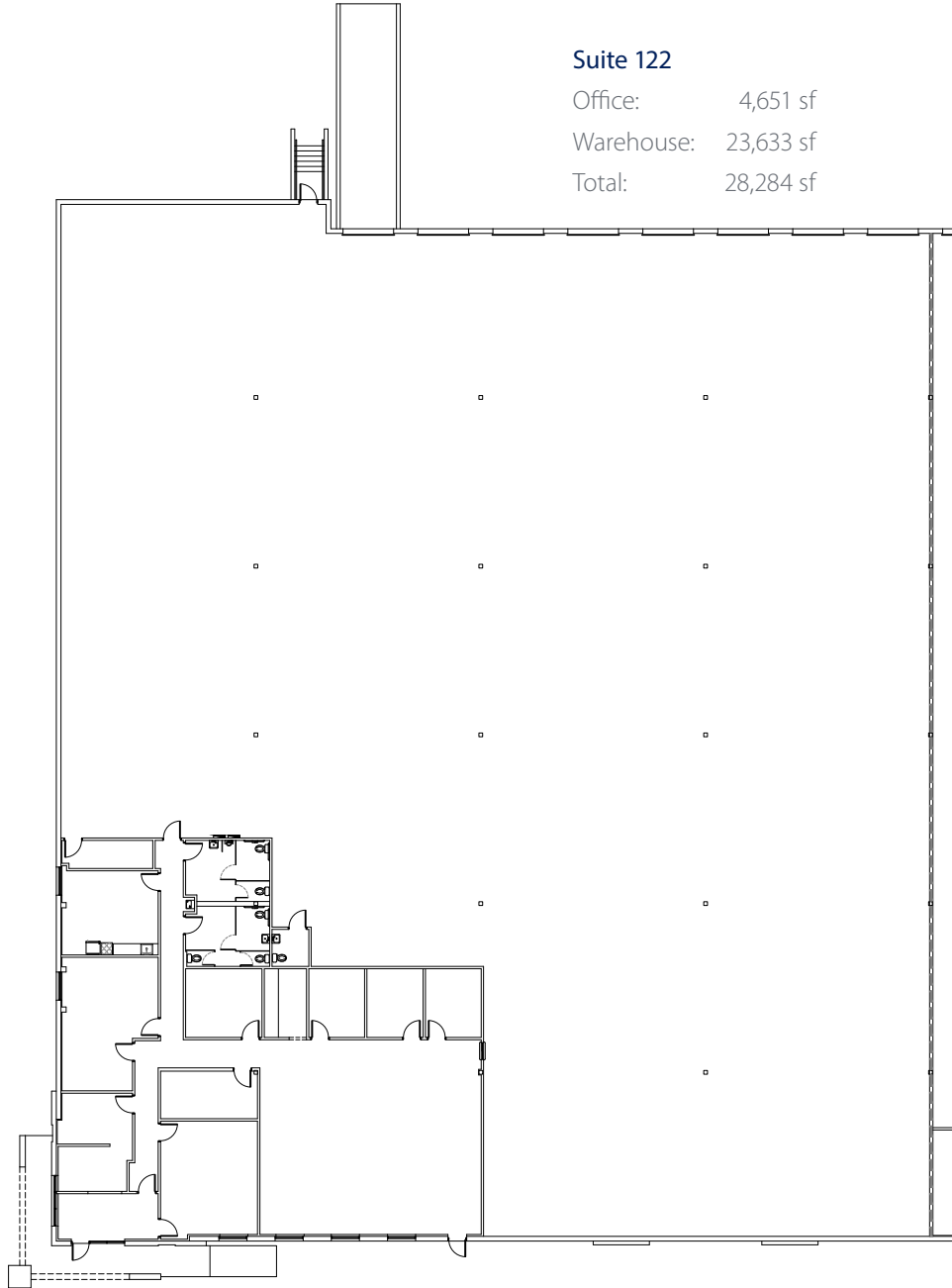
11350 NW 25th Street, Doral, FL

Owned by:



Suite 122

Office: 4,651 sf
Warehouse: 23,633 sf
Total: 28,284 sf



Home



Location



Site Info



Floor Plan



Contact



Previous

Thomas Viscount

Principal

954.903.1810

tom.viscount@avisonyoung.com