

INDUSTRIAL/OFFICE
SPACE FOR
LEASE

797-801
SPACE DRIVE

NOW AVAILABLE :: BEAVERCREEK, OHIO 45434

- 8,427 total square feet available
 - Office: 2,325 square feet
 - Warehouse: 6,102 (divisible to 4,102 and 2,000 square feet)
- Located in Beavercreek Township, south of Dayton-Xenia Road
- No city income tax
- Near Intersection of Orchard Lane and U.S. 35
- Will split office from warehouse
- HVAC: Offices and 4,102 square feet of warehouse



CBRE

FOR MORE INFORMATION PLEASE CONTACT:

Matt Arnovitz
SIOR, CCIM, CPM

Senior Associate
+1 937 461 CBRE (2273)
matt.arnovitz@cbre.com

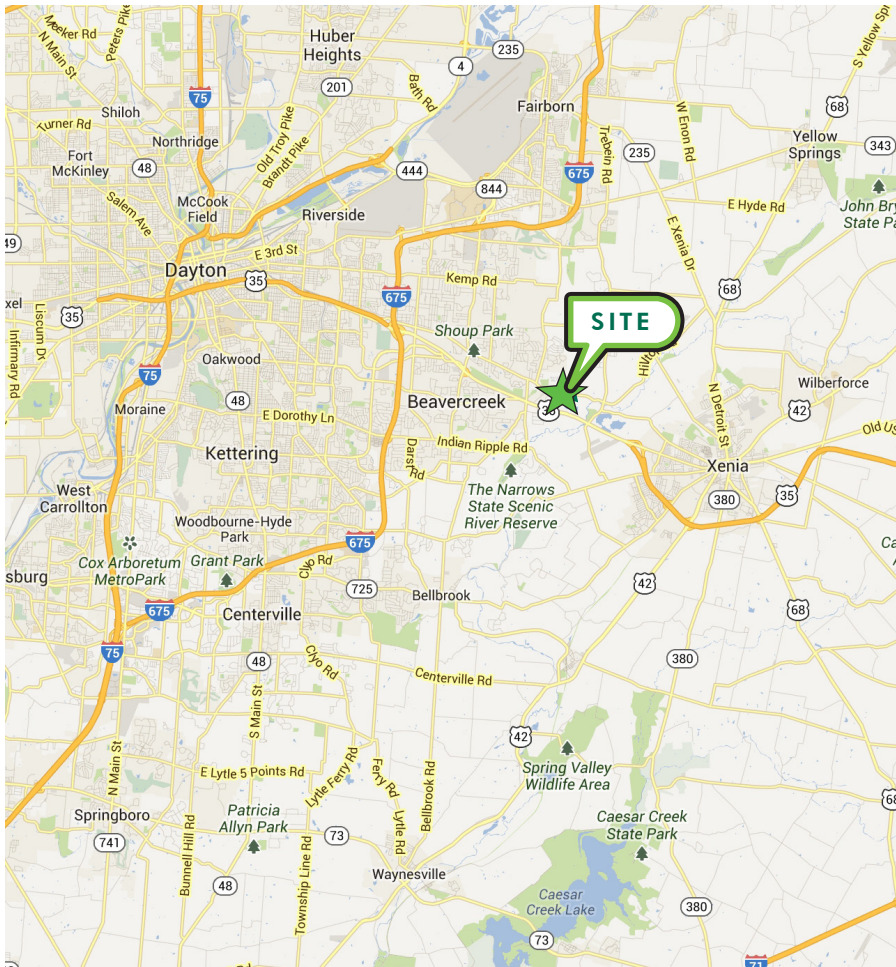
CBRE | 130 West Second Street | Suite 1000 | Dayton, Ohio 45402 | www.cbre.com/dayton

CBRE

797-801 SPACE AVENUE

BEAVERCREEK, OHIO :: 45434

LOCATION MAP

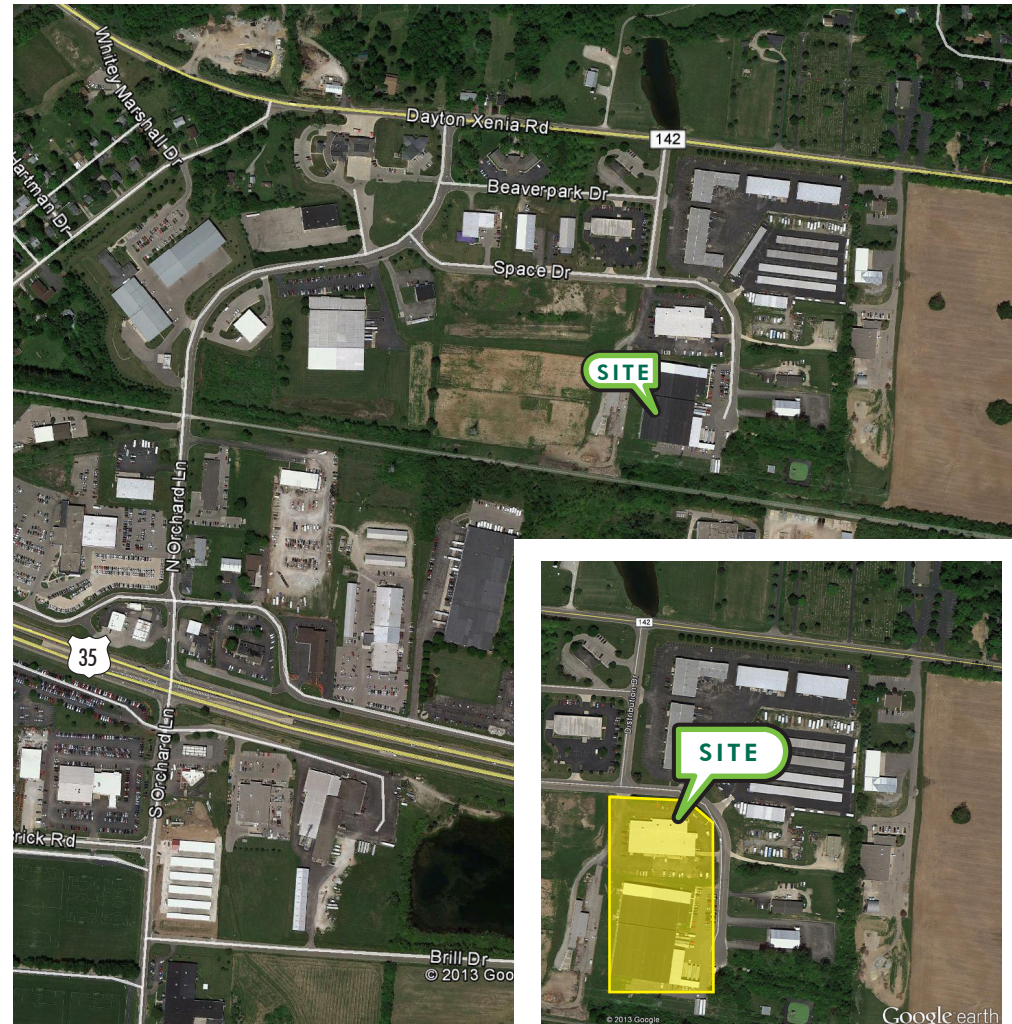


FOR MORE INFORMATION CONTACT:

Matt Arnovitz
SIOR, CCIM, CPM

Senior Associate
+1 937 461 CBRE (2273)
matt.arnovitz@cbre.com

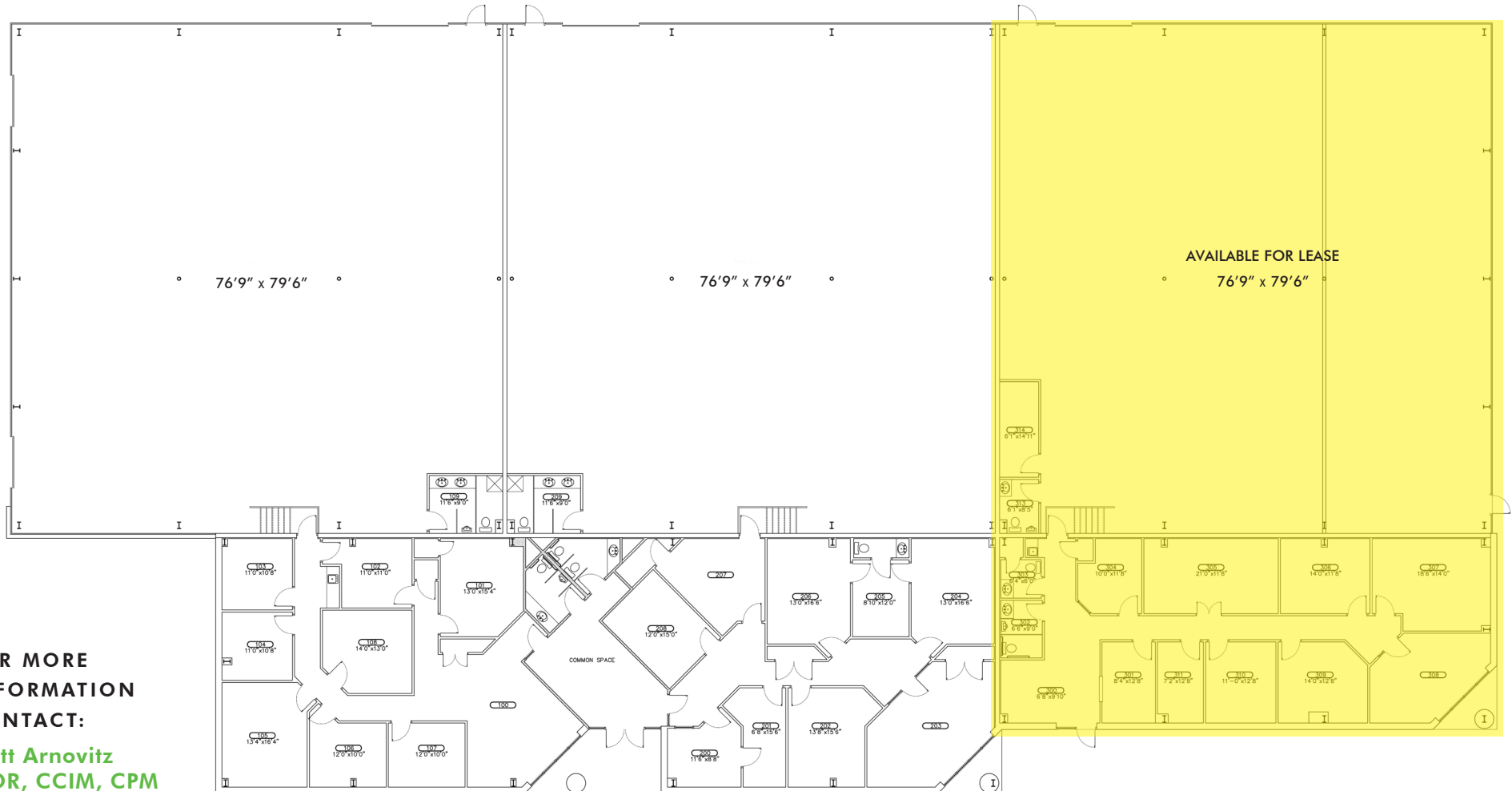
AERIAL



797-801 SPACE DRIVE

BEAVERCREEK, OHIO :: 45434

FLOOR PLAN



**FOR MORE
INFORMATION
CONTACT:**

Matt Arnovitz
SIOR, CCIM, CPM

Senior Associate

+1 937 461 CBRE (2273)

matt.arnovitz@cbre.com

CBRE | 130 West Second Street | Suite 1000 | Dayton, OH 45402 | www.cbre.com/dayton

© 2015 CBRE, Inc. This information has been obtained from sources believed reliable. We have not verified it and make no guarantee, warranty or representation about it. Any projections, opinions, assumptions or estimates used are for example only and do not represent the current or future performance of the property. You and your advisors should conduct a careful, independent investigation of the property to determine to your satisfaction the suitability of the property for your needs. Photos herein are the property of their respective owners and use of these images without the express written consent of the owner is prohibited. CBRE and the CBRE logo are service marks of CBRE, Inc. and/or its affiliated or related companies in the United States and other countries. All other marks displayed on this document are the property of their respective owners.

 @CBRECincinnati
#CBREDayton

CBRE