

OFFICE OR
MEDICAL
SPACE
FOR LEASE



1910 EAST THOMAS
PHOENIX, AZ 85016

 TRANSWESTERN REAL ESTATE SERVICES

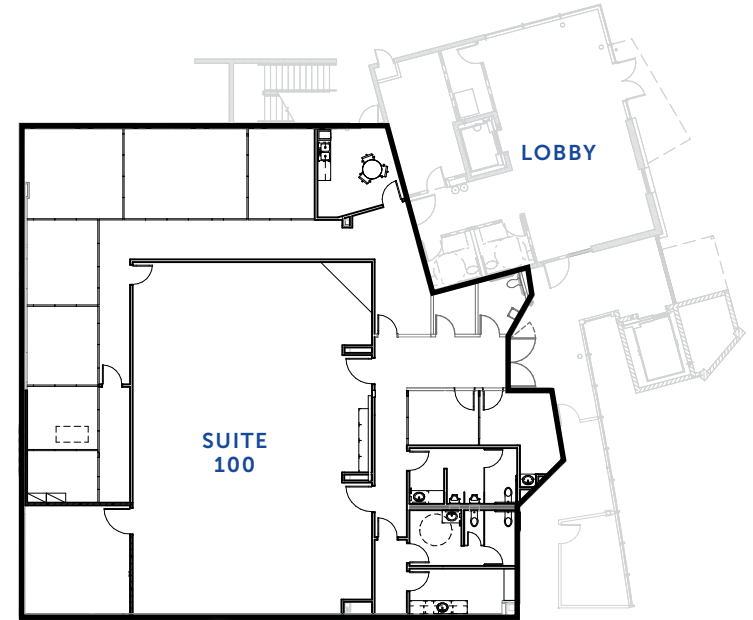
RARE AVAILABLE SPACE ON THE ABRAZO ARIZONA HEART HOSPITAL CAMPUS

- Currently built for classrooms and offices
- Landlord will convert to clinical space
- Join Abrazo Medical Group and NCP Cardiac Cath Lab
- Across the street from Phoenix Children's Hospital
- Excellent location on Thomas and the 51

SUITE:
#100

SIZE:
±6,209 SF

AVAILABLE:
Flexible



 **TRANSWESTERN** REAL ESTATE SERVICES

2501 East Camelback Road, Suite 1, Phoenix, Arizona 85016
T 602.956.5000 F 602.956.5333 www.transwestern.com

Kate Morris
Senior Vice President
602.296.6369
kate.morris@transwestern.com

Vince Femiano
Senior Vice President
602.954.7559
vince.femiano@transwestern.com

Kevin Smigiel
Senior Vice President
602.265.5502
kevin.smigiel@transwestern.com

The information provided herein was obtained from sources believed reliable; however, Transwestern makes no guarantees, warranties or representations as to the completeness or accuracy thereof. The presentation of this property is submitted subject to errors, omissions, change of price or conditions, prior to sale or lease, or withdrawal without notice. Copyright © 2020 Transwestern. 1020.