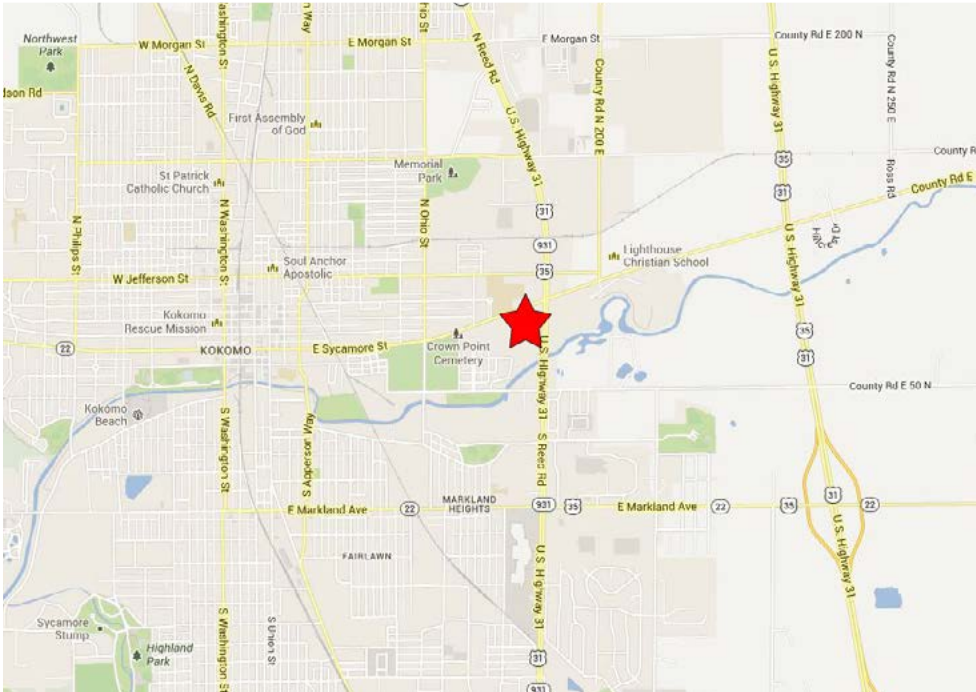




Kokomo Retail Center on IN-931

148 Creekside Dr. Kokomo, IN 46901



Details:

- Selling Price - \$595,000
- 7,884 SF Total
- 0.79 Acres
- Suite A - 3,025 SF vacant
- Suite B - 3,804 SF occupied
- Suite C - 719 SF vacant
- Ideal for an owner-user
- \$39,600 annual rental income
- Frontage on busy IN - 931 (43,940 vehicles per day)
- Zoned C-2

Keith Dedrick SIOR, CCIM
 Cell: 317-502-3622
 E-mail: keith@ccgbrokers.com

Corporate Commercial Group
 11495 N Pennsylvania St., Suite 225 Carmel, IN 46032
 Office: 317-818-1231
 Fax: 317-818-1943





Kokomo Retail Center on IN-931

148 Creekside Dr. Kokomo, IN 46901



Keith Dedrick SIOR, CCIM
Cell: 317-502-3622
E-mail: keith@ccgbrokers.com

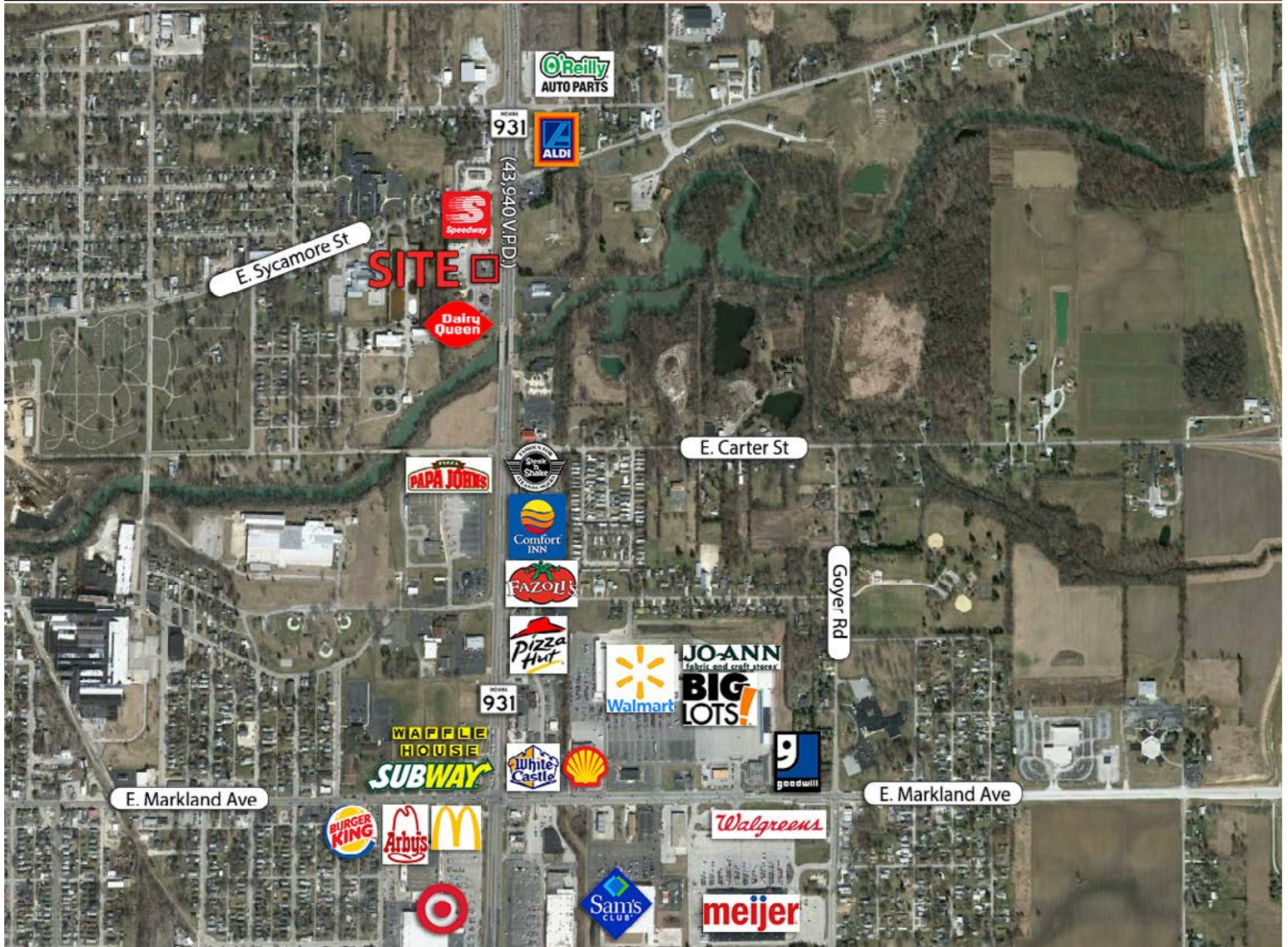
Corporate Commercial Group
11495 N Pennsylvania St., Suite 225 Carmel, IN 46032
Office: 317-818-1231
Fax: 317-818-1943





Kokomo Retail Center on IN-931

148 Creekside Dr. Kokomo, IN 46901



Radius	Population	Ave. HH Inc.	Households	Ave. HH Size
1 Mile	3,761	\$35,206	1,522	2.47
3 Miles	38,829	\$41,959	16,645	2.28
5 Miles	62,858	\$49,640	26,774	2.30

Keith Dedrick SIOR, CCIM
 Cell: 317-502-3622
 E-mail: keith@ccgbrokers.com

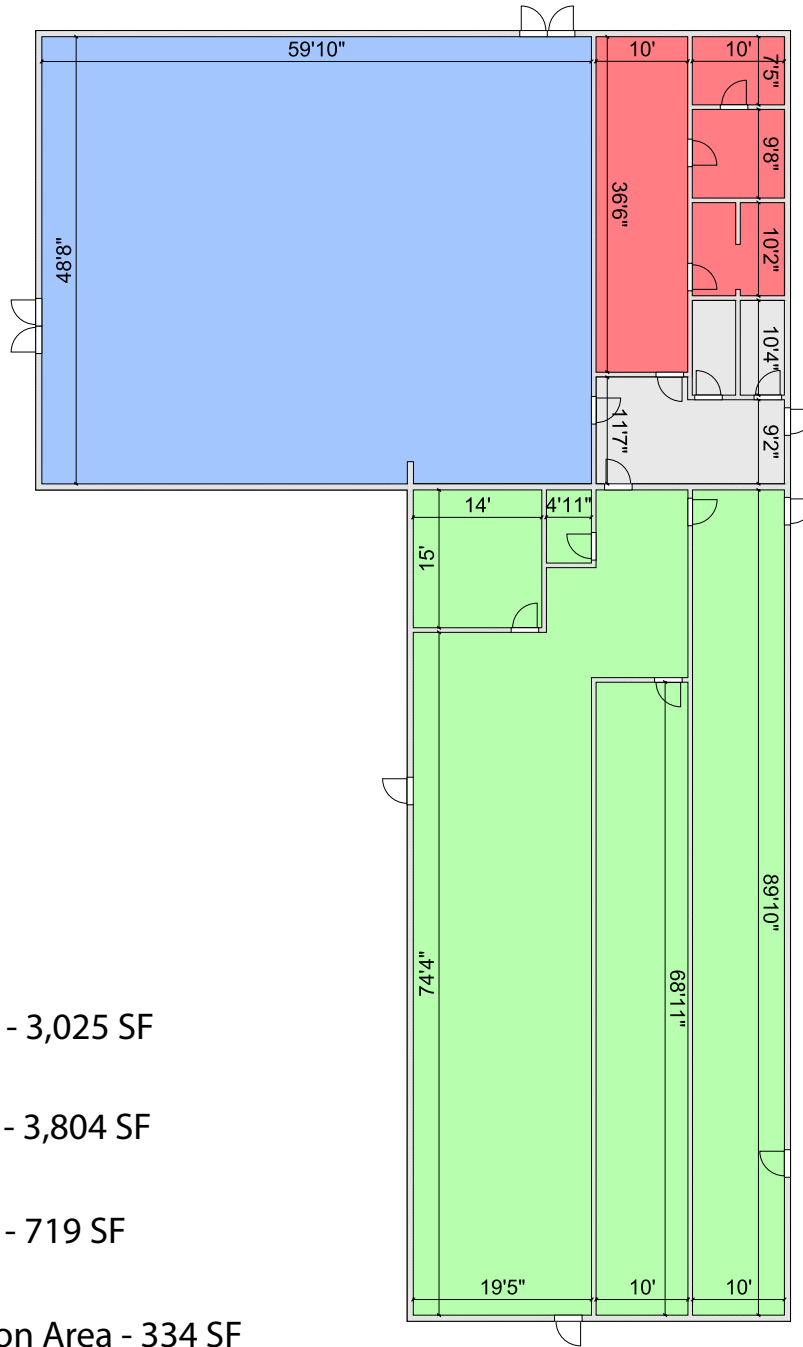
Corporate Commercial Group
 11495 N Pennsylvania St., Suite 225 Carmel, IN 46032
 Office: 317-818-1231
 Fax: 317-818-1943









Kokomo Retail Center on IN-931

148 Creekside Dr. Kokomo, IN 46901



-  Suite A - 3,025 SF
-  Suite B - 3,804 SF
-  Suite C - 719 SF
-  Common Area - 334 SF

Keith Dedrick SIOR, CCIM
Cell: 317-502-3622
E-mail: keith@ccgbrokers.com

Corporate Commercial Group
11495 N Pennsylvania St., Suite 225 Carmel, IN 46032
Office: 317-818-1231
Fax: 317-818-1943

