

# Johnson Ranch

2260 Douglas Boulevard, Roseville, CA



## Class "A" Office Space For Lease

### Suite 150

±1,028 Rentable SF

### Suite 250

±2,039 Rentable SF

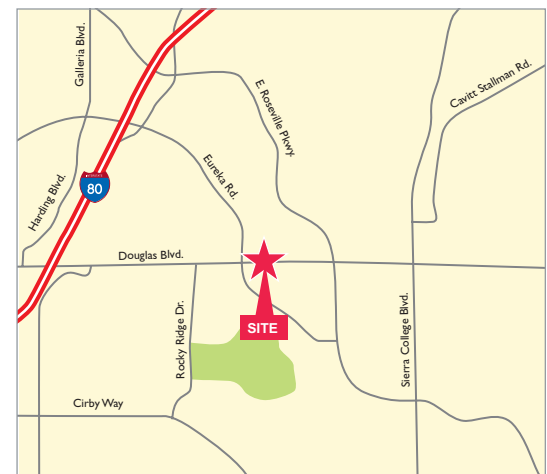
### Suite 280

±2,225 Rentable SF

### Suite 105

±4,836 Rentable SF

- ◆ Building and Monument Signage Available
- ◆ Prestigious Douglas Boulevard Address
- ◆ Extensive Window Line With Panoramic Views of The Sierras
- ◆ Professional Property Management
- ◆ EMS (Energy Management System) for HVAC and Common Area Lighting
- ◆ Fiber Already in Building
- ◆ Close Proximity to Restaurants and Shopping



**Elaine Hartin** Senior Managing Director 916.367.6344 [ehartin@newmarkccarey.com](mailto:ehartin@newmarkccarey.com) CA RE License #01047857

**Tom Heacox** Executive Managing Director 916.569.2315 [theacox@newmarkccarey.com](mailto:theacox@newmarkccarey.com) CA RE License #00913198

**Matt Heacox** Director 916.569.2314 [mheacox@newmarkccarey.com](mailto:mheacox@newmarkccarey.com) CA RE License #01451720

**Newmark  
Knight Frank**

3005 Douglas Boulevard, Suite 130, Roseville, CA 95661

[www.newmarkccarey.com](http://www.newmarkccarey.com)

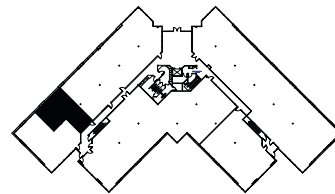
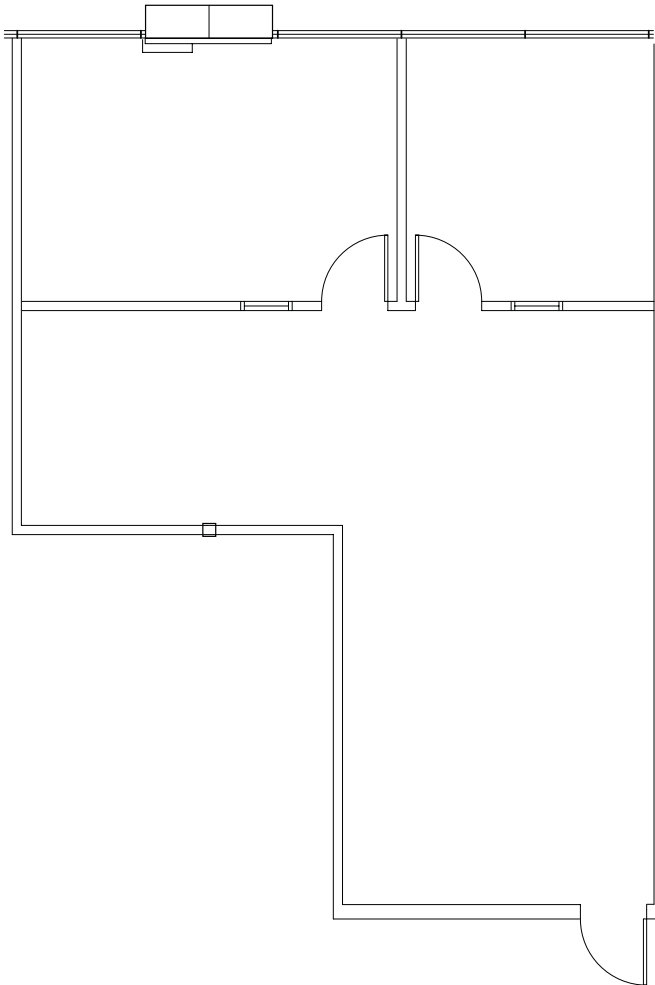
Procuring broker shall only be entitled to a commission, calculated in accordance with the rates approved by our principal only if such procuring broker executes a brokerage agreement acceptable to us and our principal and the conditions as set forth in the brokerage agreement are fully and unconditionally satisfied. Although all information furnished regarding property for sale, rental, or financing is from sources deemed reliable, such information has not been verified and no express representation is made nor is any to be implied as to the accuracy thereof and it is submitted subject to errors, omissions, change of price, rental or other conditions, prior sale, lease or financing, or withdrawal without notice and to any special conditions imposed by our principal.

# Johnson Ranch

2260 Douglas Boulevard, Roseville, CA



Suite 150  
±1,028 RSF



**Elaine Hartin** Senior Managing Director 916.367.6344 [ehartin@newmarkccarey.com](mailto:ehartin@newmarkccarey.com) CA RE License #01047857

**Tom Heacox** Executive Managing Director 916.569.2315 [theacox@newmarkccarey.com](mailto:theacox@newmarkccarey.com) CA RE License #00913198

**Matt Heacox** Director 916.569.2314 [mheacox@newmarkccarey.com](mailto:mheacox@newmarkccarey.com) CA RE License #01451720

**Newmark  
Knight Frank**

3005 Douglas Boulevard, Suite 130, Roseville, CA 95661

[www.newmarkccarey.com](http://www.newmarkccarey.com)

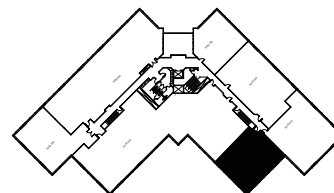
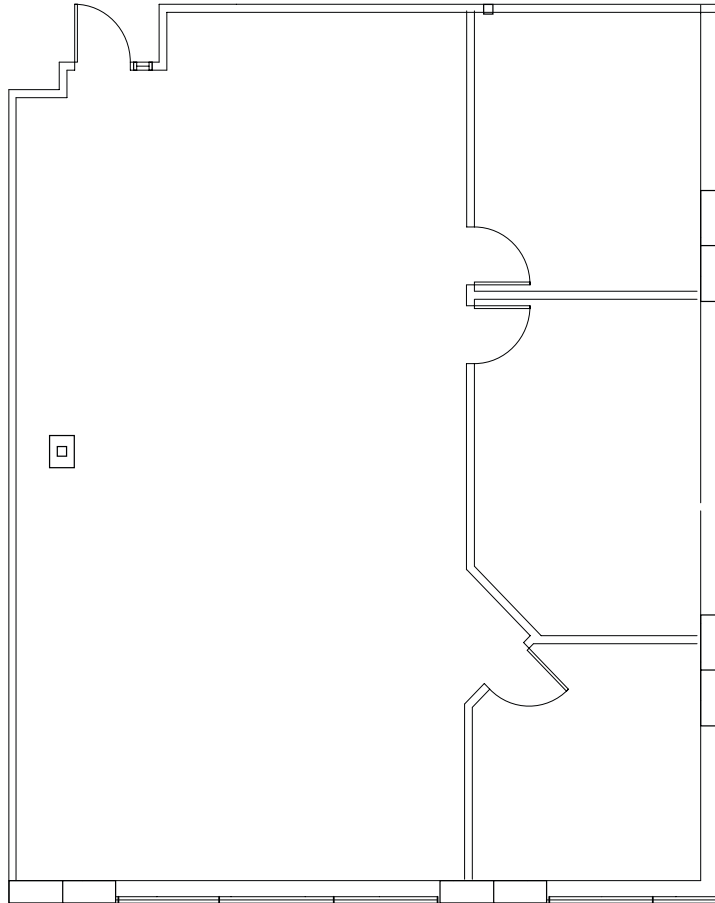
Procuring broker shall only be entitled to a commission, calculated in accordance with the rates approved by our principal only if such procuring broker executes a brokerage agreement acceptable to us and our principal and the conditions as set forth in the brokerage agreement are fully and unconditionally satisfied. Although all information furnished regarding property for sale, rental, or financing is from sources deemed reliable, such information has not been verified and no express representation is made nor is any to be implied as to the accuracy thereof and it is submitted subject to errors, omissions, change of price, rental or other conditions, prior sale, lease or financing, or withdrawal without notice and to any special conditions imposed by our principal.

# Johnson Ranch

2260 Douglas Boulevard, Roseville, CA



**Suite 250**  
**±2,039 RSF**



**Elaine Hartin** Senior Managing Director 916.367.6344 [ehartin@newmarkccarey.com](mailto:ehartin@newmarkccarey.com) CA RE License #01047857

**Tom Heacox** Executive Managing Director 916.569.2315 [theacox@newmarkccarey.com](mailto:theacox@newmarkccarey.com) CA RE License #00913198

**Matt Heacox** Director 916.569.2314 [mheacox@newmarkccarey.com](mailto:mheacox@newmarkccarey.com) CA RE License #01451720

**Newmark**  
**Knight Frank**

3005 Douglas Boulevard, Suite 130, Roseville, CA 95661

[www.newmarkccarey.com](http://www.newmarkccarey.com)

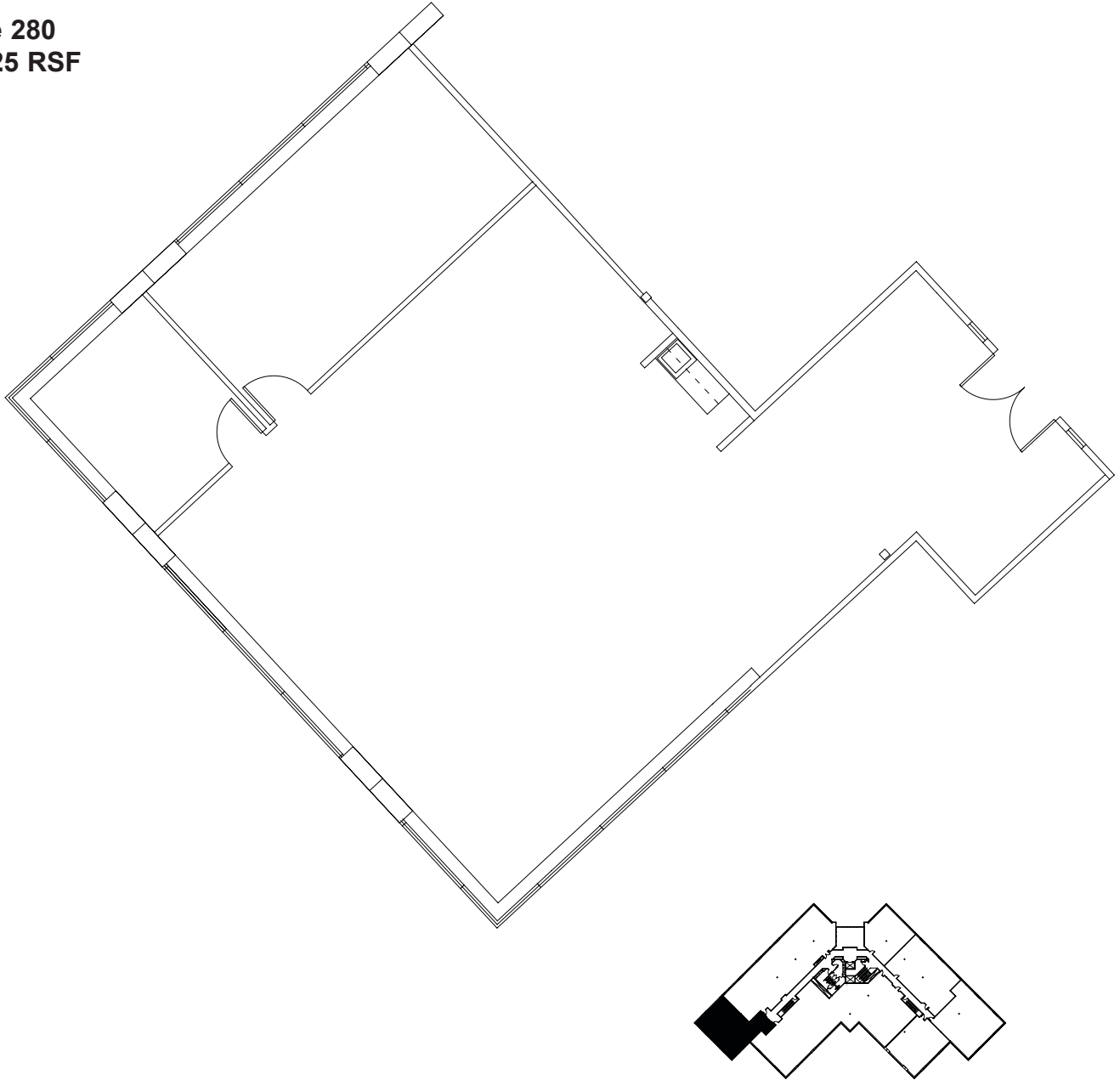
Procuring broker shall only be entitled to a commission, calculated in accordance with the rates approved by our principal only if such procuring broker executes a brokerage agreement acceptable to us and our principal and the conditions as set forth in the brokerage agreement are fully and unconditionally satisfied. Although all information furnished regarding property for sale, rental, or financing is from sources deemed reliable, such information has not been verified and no express representation is made nor is any to be implied as to the accuracy thereof and it is submitted subject to errors, omissions, change of price, rental or other conditions, prior sale, lease or financing, or withdrawal without notice and to any special conditions imposed by our principal.

# Johnson Ranch

2260 Douglas Boulevard, Roseville, CA



**Suite 280**  
**±2,225 RSF**



**Elaine Hartin** Senior Managing Director 916.367.6344 [ehartin@newmarkccarey.com](mailto:ehartin@newmarkccarey.com) CA RE License #01047857

**Tom Heacox** Executive Managing Director 916.569.2315 [theacox@newmarkccarey.com](mailto:theacox@newmarkccarey.com) CA RE License #00913198

**Matt Heacox** Director 916.569.2314 [mheacox@newmarkccarey.com](mailto:mheacox@newmarkccarey.com) CA RE License #01451720

**Newmark**  
**Knight Frank**

3005 Douglas Boulevard, Suite 130, Roseville, CA 95661

[www.newmarkccarey.com](http://www.newmarkccarey.com)

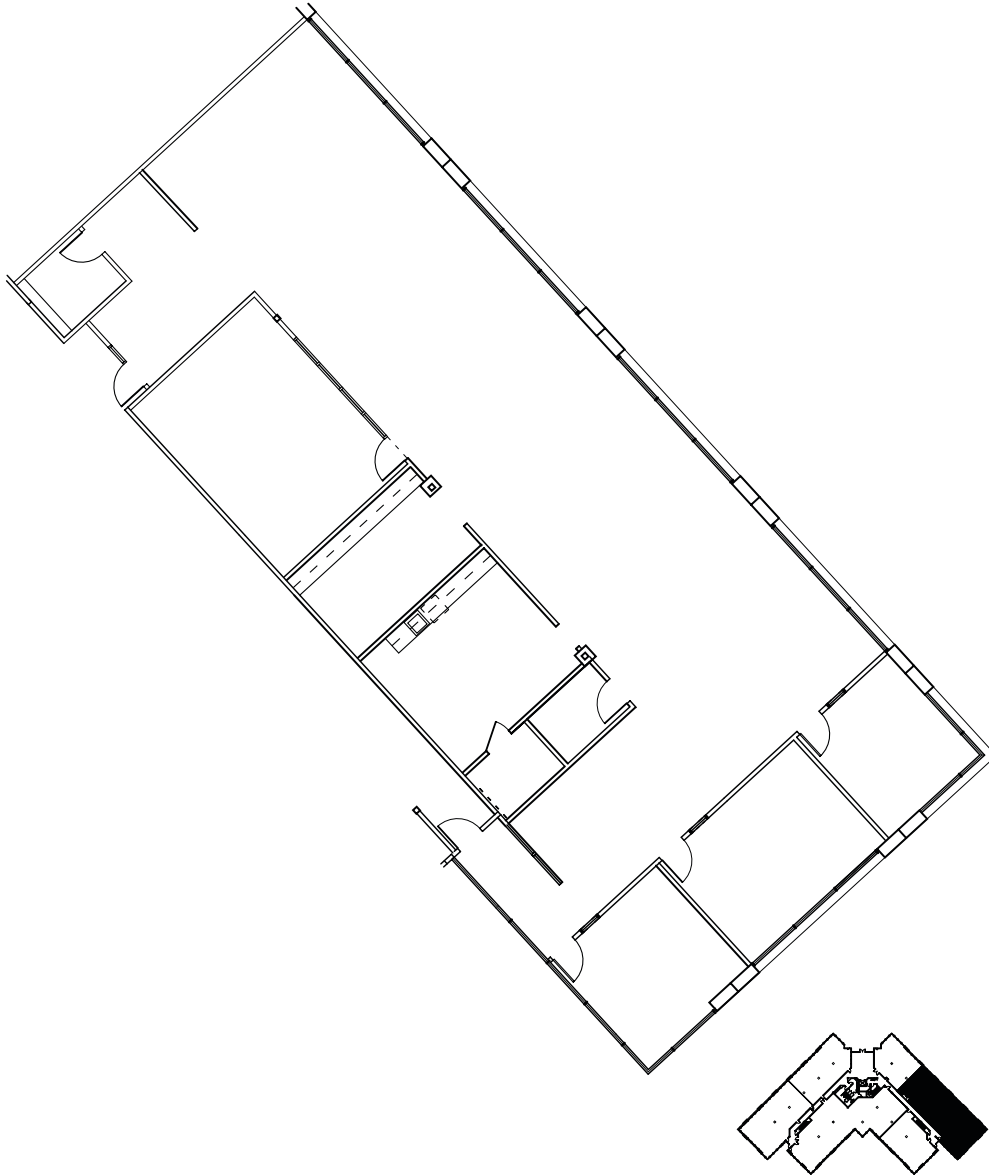
Procuring broker shall only be entitled to a commission, calculated in accordance with the rates approved by our principal only if such procuring broker executes a brokerage agreement acceptable to us and our principal and the conditions as set forth in the brokerage agreement are fully and unconditionally satisfied. Although all information furnished regarding property for sale, rental, or financing is from sources deemed reliable, such information has not been verified and no express representation is made nor is any to be implied as to the accuracy thereof and it is submitted subject to errors, omissions, change of price, rental or other conditions, prior sale, lease or financing, or withdrawal without notice and to any special conditions imposed by our principal.

# Johnson Ranch

2260 Douglas Boulevard, Roseville, CA



**Suite 105**  
**±4,836 RSF**



**Elaine Hartin** Senior Managing Director 916.367.6344 [ehartin@newmarkccarey.com](mailto:ehartin@newmarkccarey.com) CA RE License #01047857

**Tom Heacox** Executive Managing Director 916.569.2315 [theacox@newmarkccarey.com](mailto:theacox@newmarkccarey.com) CA RE License #00913198

**Matt Heacox** Director 916.569.2314 [mheacox@newmarkccarey.com](mailto:mheacox@newmarkccarey.com) CA RE License #01451720

**Newmark**  
**Knight Frank**

3005 Douglas Boulevard, Suite 130, Roseville, CA 95661

[www.newmarkccarey.com](http://www.newmarkccarey.com)

Procuring broker shall only be entitled to a commission, calculated in accordance with the rates approved by our principal only if such procuring broker executes a brokerage agreement acceptable to us and our principal and the conditions as set forth in the brokerage agreement are fully and unconditionally satisfied. Although all information furnished regarding property for sale, rental, or financing is from sources deemed reliable, such information has not been verified and no express representation is made nor is any to be implied as to the accuracy thereof and it is submitted subject to errors, omissions, change of price, rental or other conditions, prior sale, lease or financing, or withdrawal without notice and to any special conditions imposed by our principal.